

mis[®] | KITS
MIS Kits Presentation

Conical Connection

Surgical Kit

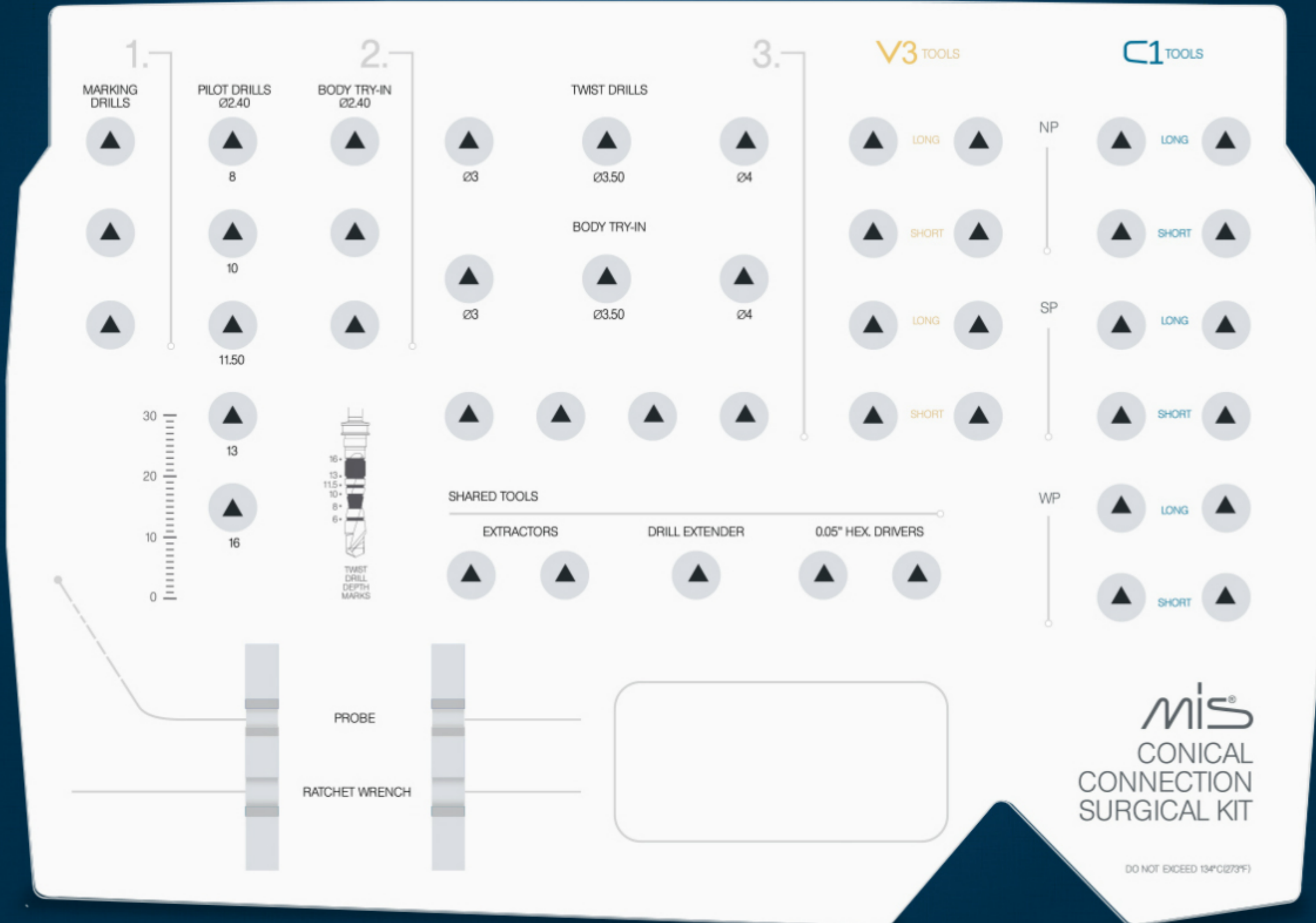


Minimum tools for maximum efficiency:

- Advanced, yet simple design
- Smooth surface for ultimate cleaning and sterilization
- Single-handed opening mechanism

Contents

Surgical Instruments Kit (MK-T051)



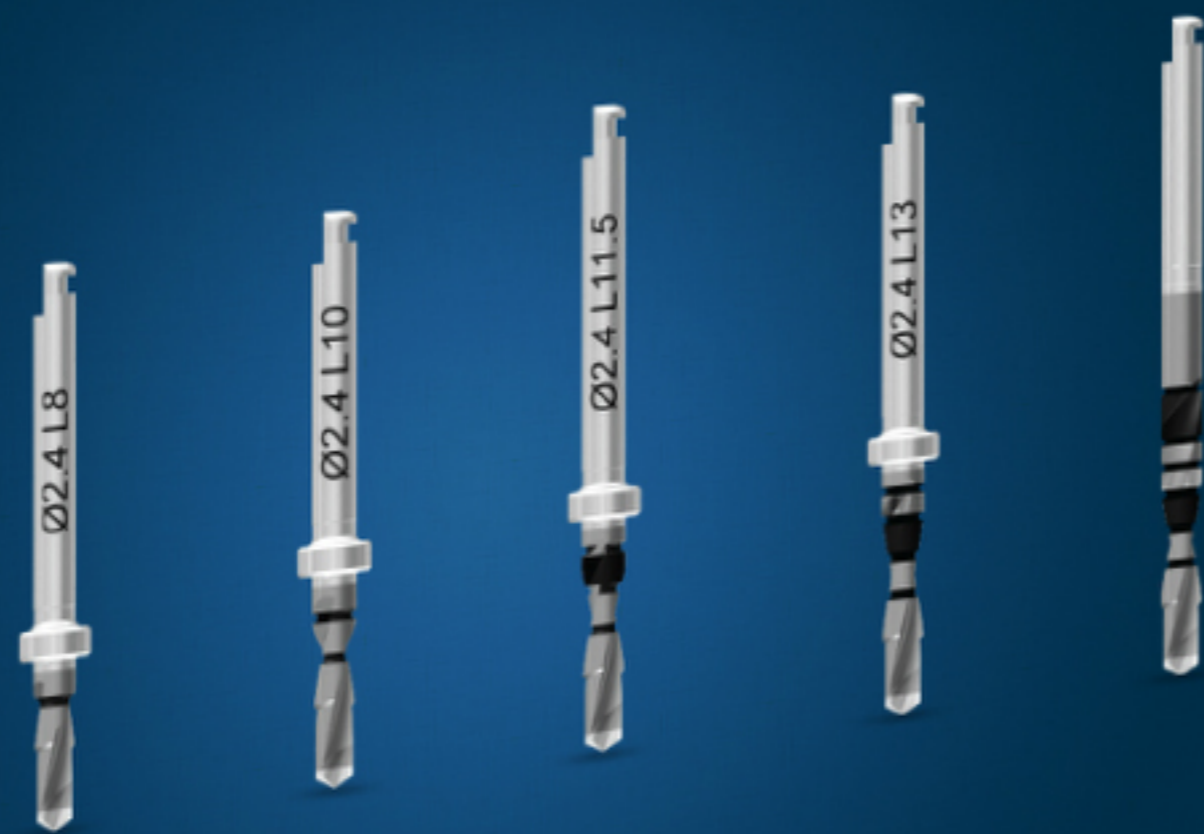
Marking Drill >>



- Marking Drill
- Pilot Drill
- Body try-in
- Step Drills
- Countersink
- V3 Tools
- C1 Tools



Pilot Drill >>



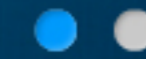
- Marking Drill
- Pilot Drill
- Body try-in
- Step Drills
- Countersink
- V3 Tools
- C1 Tools



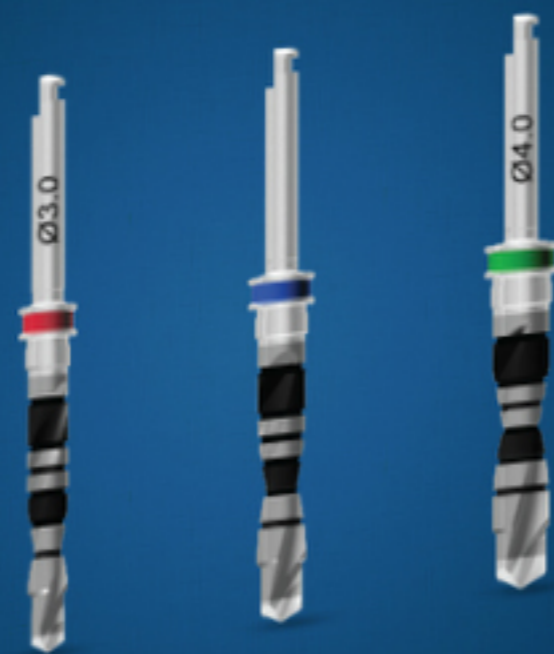
Body try-in >>



- Marking Drill
- Pilot Drill
- **Body try-in**
- Step Drills
- Countersink
- V3 Tools
- C1 Tools



Step Drill >>



- Marking Drill
- Pilot Drill
- Body try-in
- **Step Drills**
- Countersink
- V3 Tools
- C1 Tools



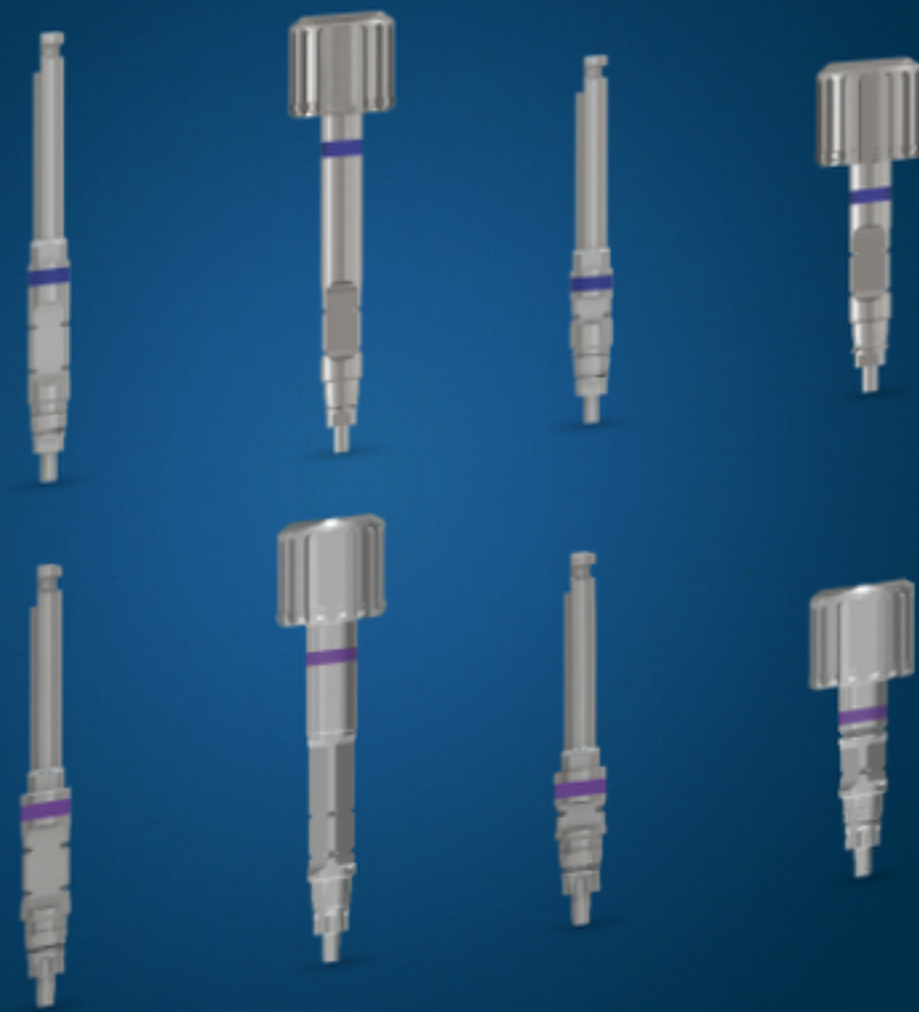
Countersink >>



- Marking Drill
- Pilot Drill
- Body try-in
- Step Drills
- **Countersink**
- V3 Tools
- C1 Tools



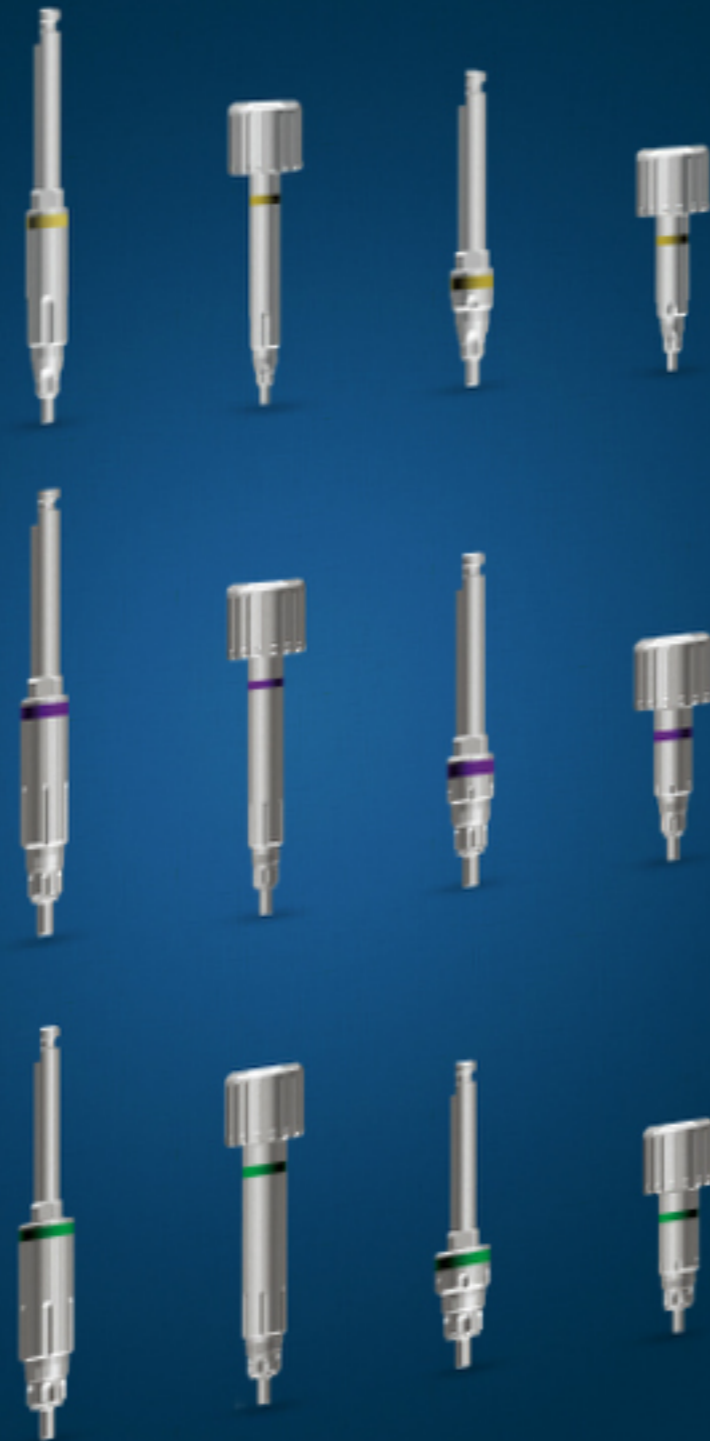
V3 Tools >



- Marking Drill
- Pilot Drill
- Body try-in
- Step Drills
- Countersink
- **V3 Tools**
- C1 Tools



C1 Tools >



- Marking Drill
- Pilot Drill
- Body try-in
- Step Drills
- Countersink
- V3 Tools
- C1 Tools





- Shared Tools



SEVEN Surgical Kit

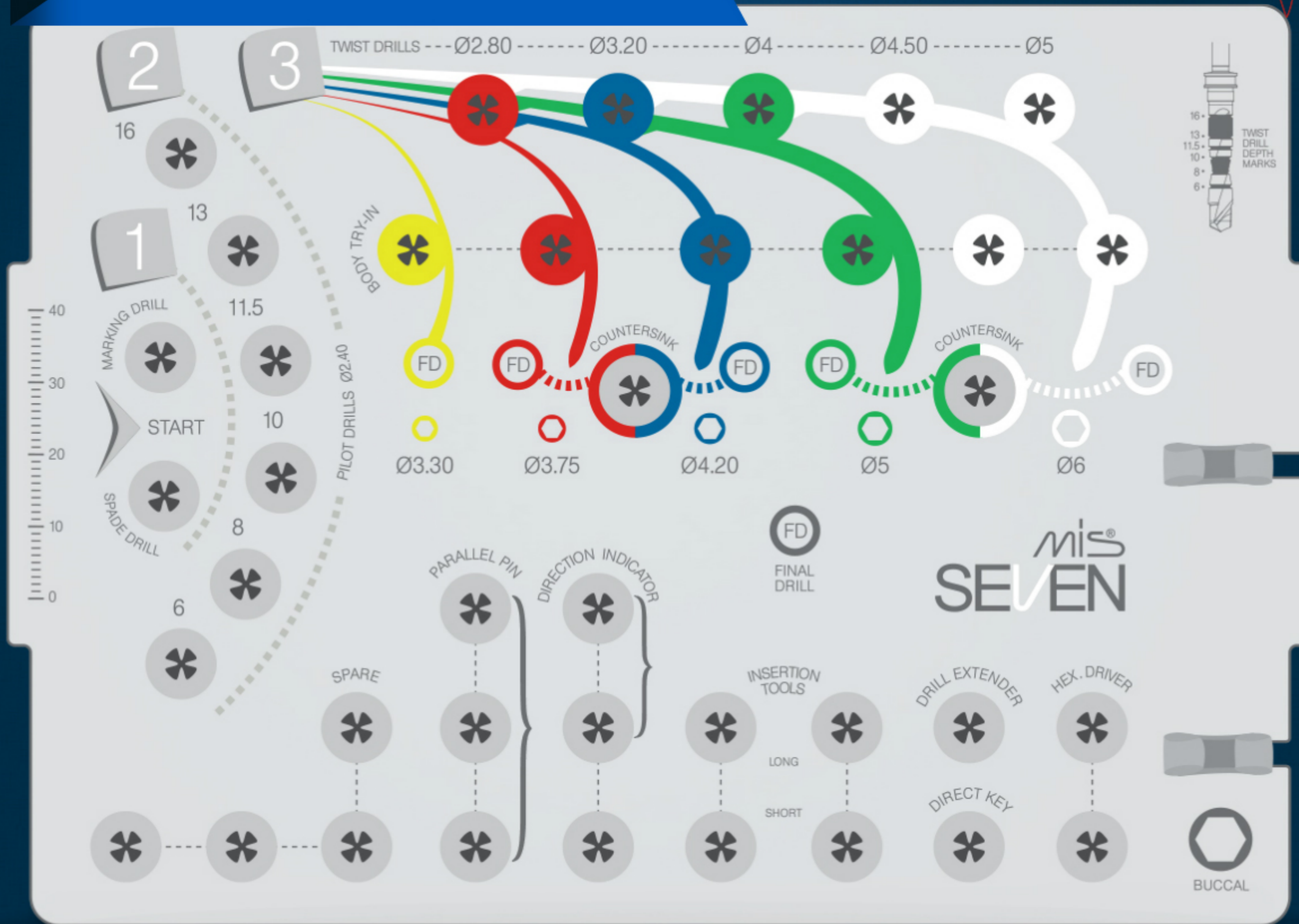


Full solution:

- Color-coded tray for simple use
- Variety of tools for the entire clinical protocol

Contents

SEVEN Surgical Kit (MK-T048)



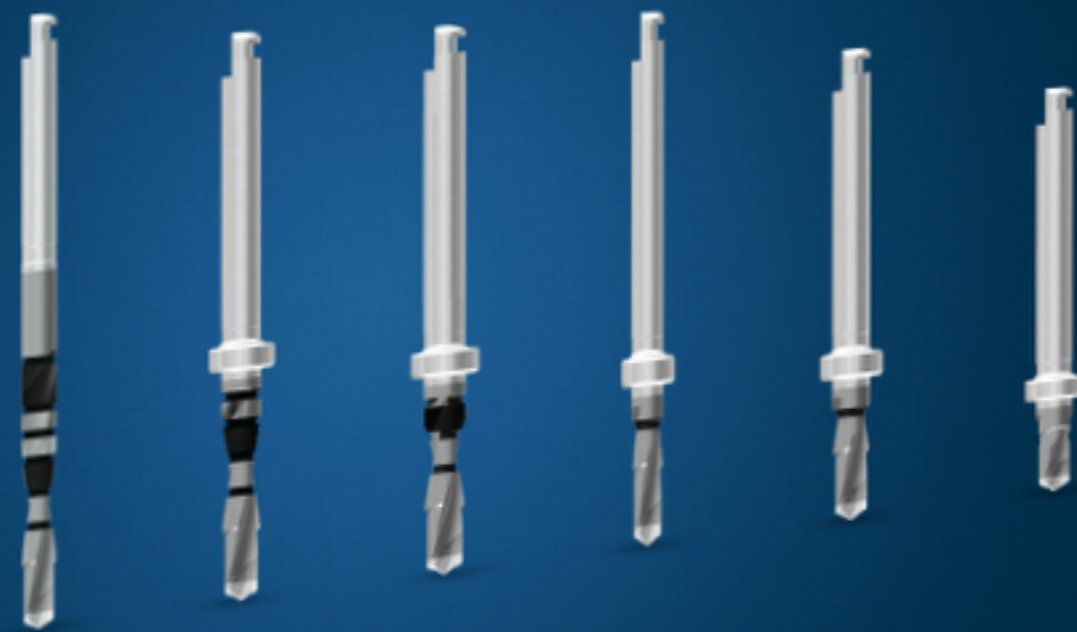
Marking Drill >>



- Marking Drill
- Step Pilot Drill
- Twist Drill
- Body try-in
- Countersink
- Spare, Parallel, Pin an
- Insertion Tool



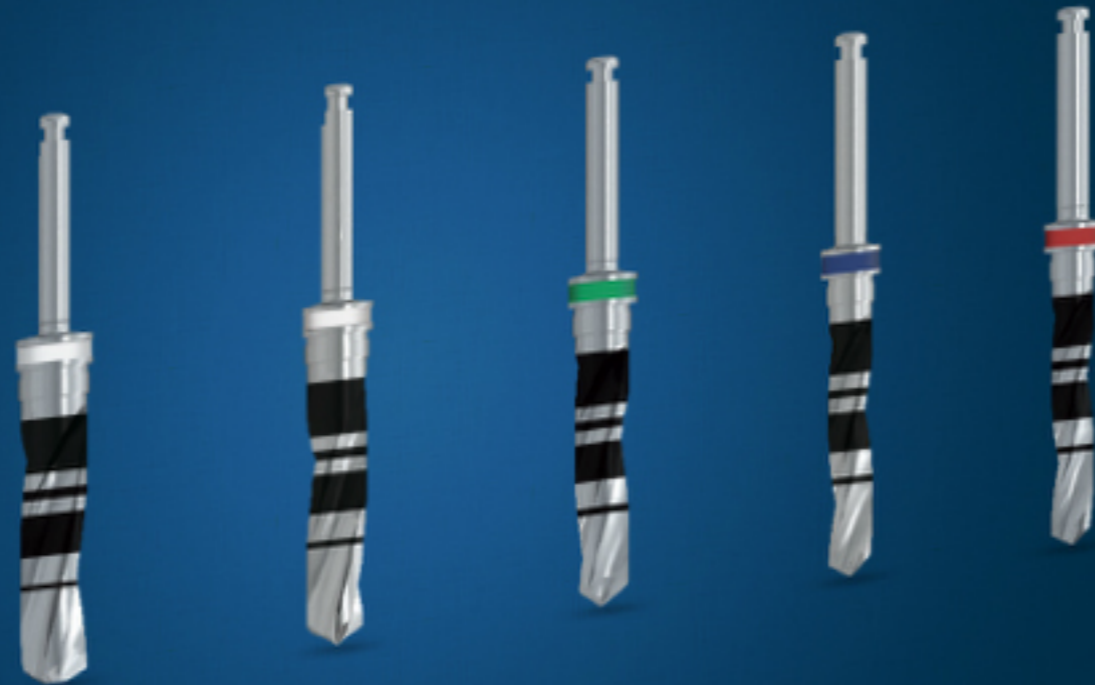
Step Pilot Drill >



- Marking Drill
- Step Pilot Drill
- Twist Drill
- Body try-in
- Countersink
- Spare, Parallel, Pin an
- Insertion Tool



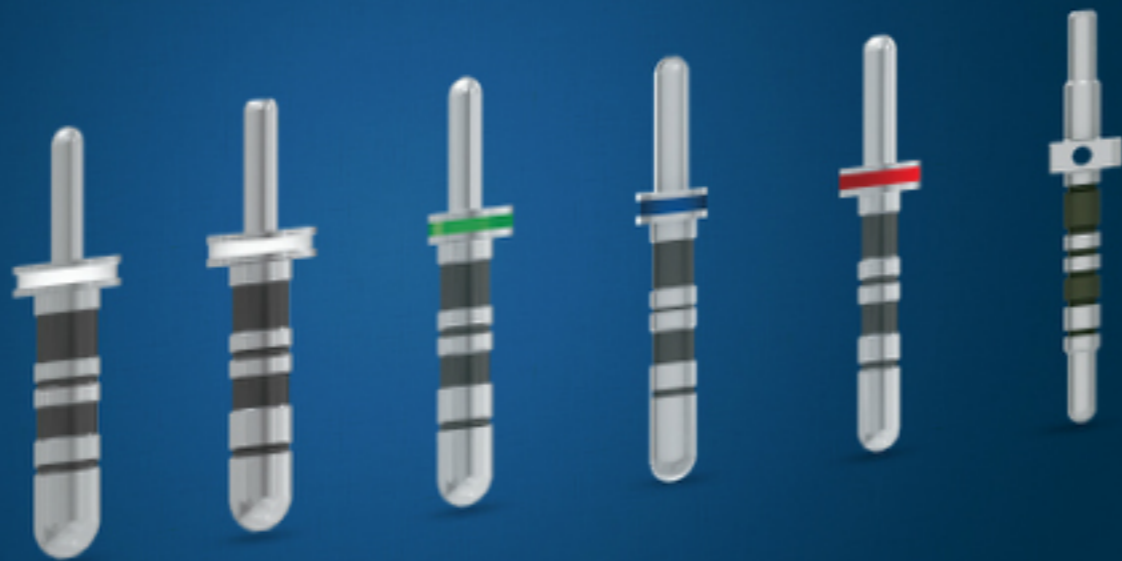
Twist Drill >



- Marking Drill
- Step Pilot Drill
- **Twist Drill**
- Body try-in
- Countersink
- Spare, Parallel, Pin an
- Insertion Tool



Body try-in >



- Marking Drill
- Step Pilot Drill
- Twist Drill
- **Body try-in**
- Countersink
- Spare, Parallel, Pin an
- Insertion Tool



Countersink >



- Marking Drill
- Step Pilot Drill
- Twist Drill
- Body try-in
- **Countersink**
- Spare, Parallel, Pin an
- Insertion Tool





- Marking Drill
- Step Pilot Drill
- Twist Drill
- Body try-in
- Countersink
- Spare, Parallel, Pin and
- Insertion Tool



Insertion Tool >



- Marking Drill
- Step Pilot Drill
- Twist Drill
- Body try-in
- Countersink
- Spare, Parallel, Pin an
- **Insertion Tool**



Drill extender >>
and direct key



Hex. Driver >>

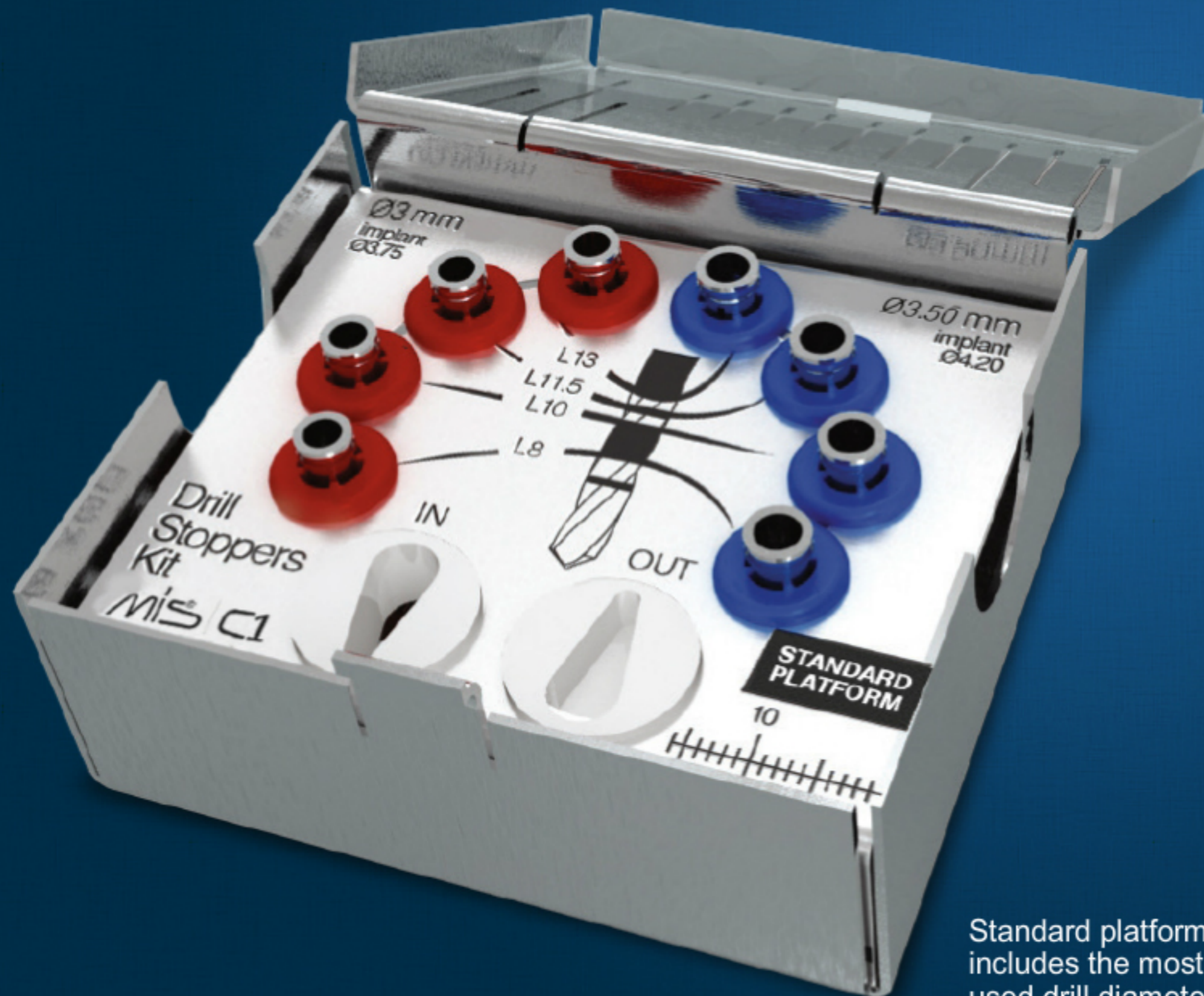


- Drill extender and direct key, Hex. Driver
- Surgical Torque Ratchet



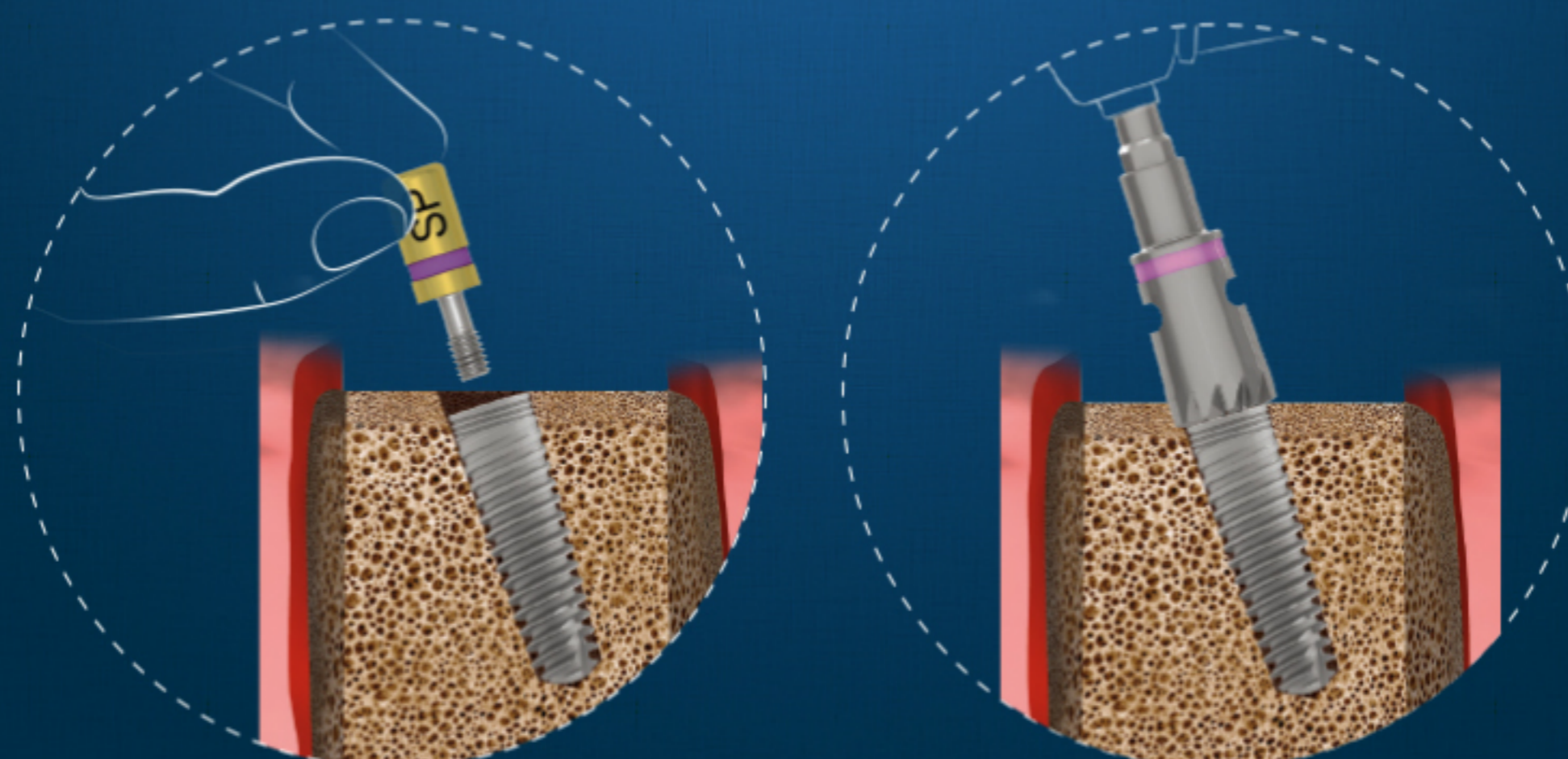
Drill Stoppers Kit

Depth-based drill stoppers kit:
separate kits are available for
lengths: 8, 10, 11.5, 13mm

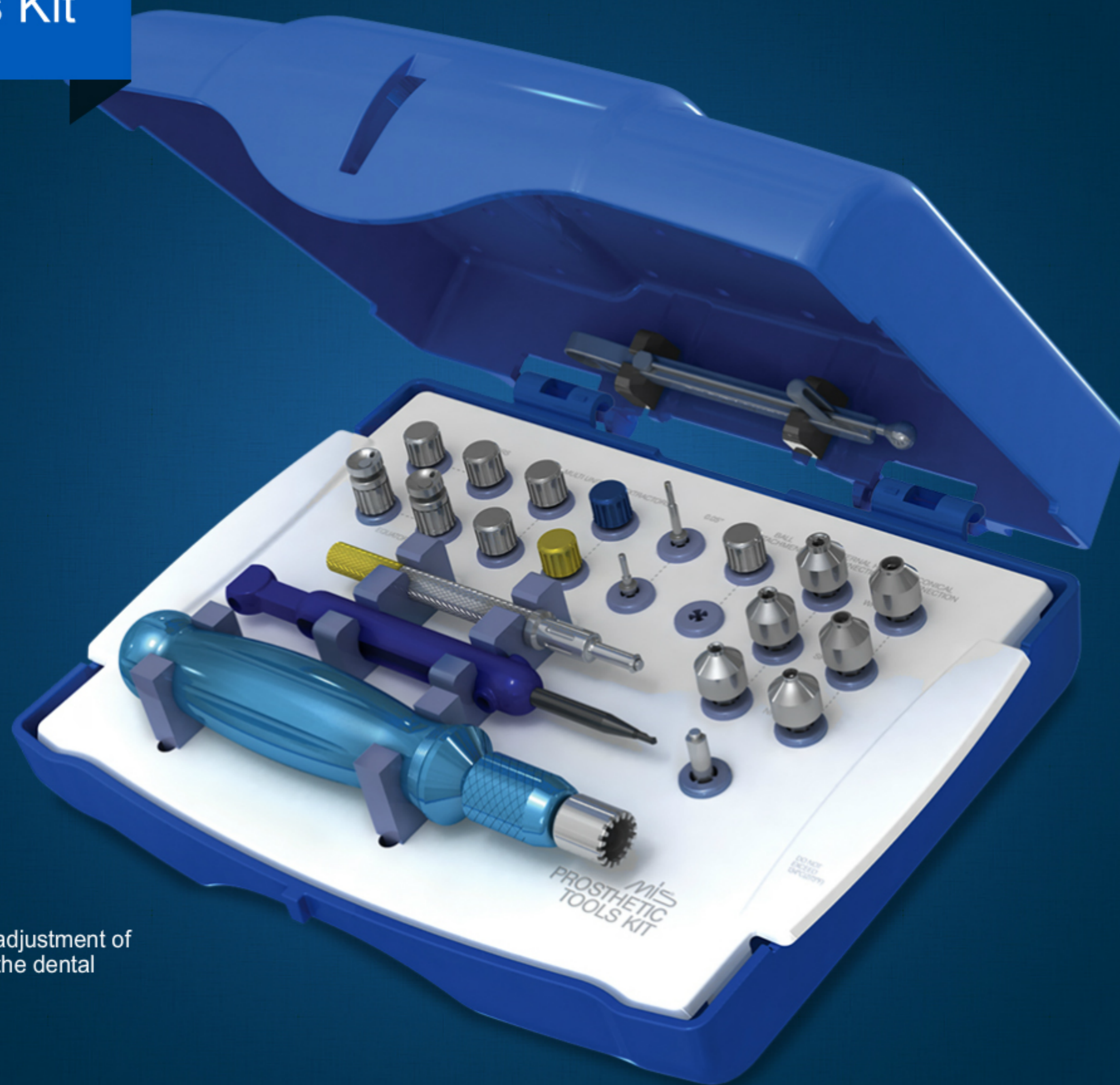


Standard platform stoppers kit:
includes the most commonly
used drill diameters

Bone Profiler Kit



Prosthetic Tools Kit



Intended for handling and adjustment of prosthetic components, in the dental clinic or lab

Comprised of unique drills and insertion tools. With specially designed sleeve, the drill stops at the precise position and depth planned. The MGUIDE set eliminates the need for traditional guidance keys.

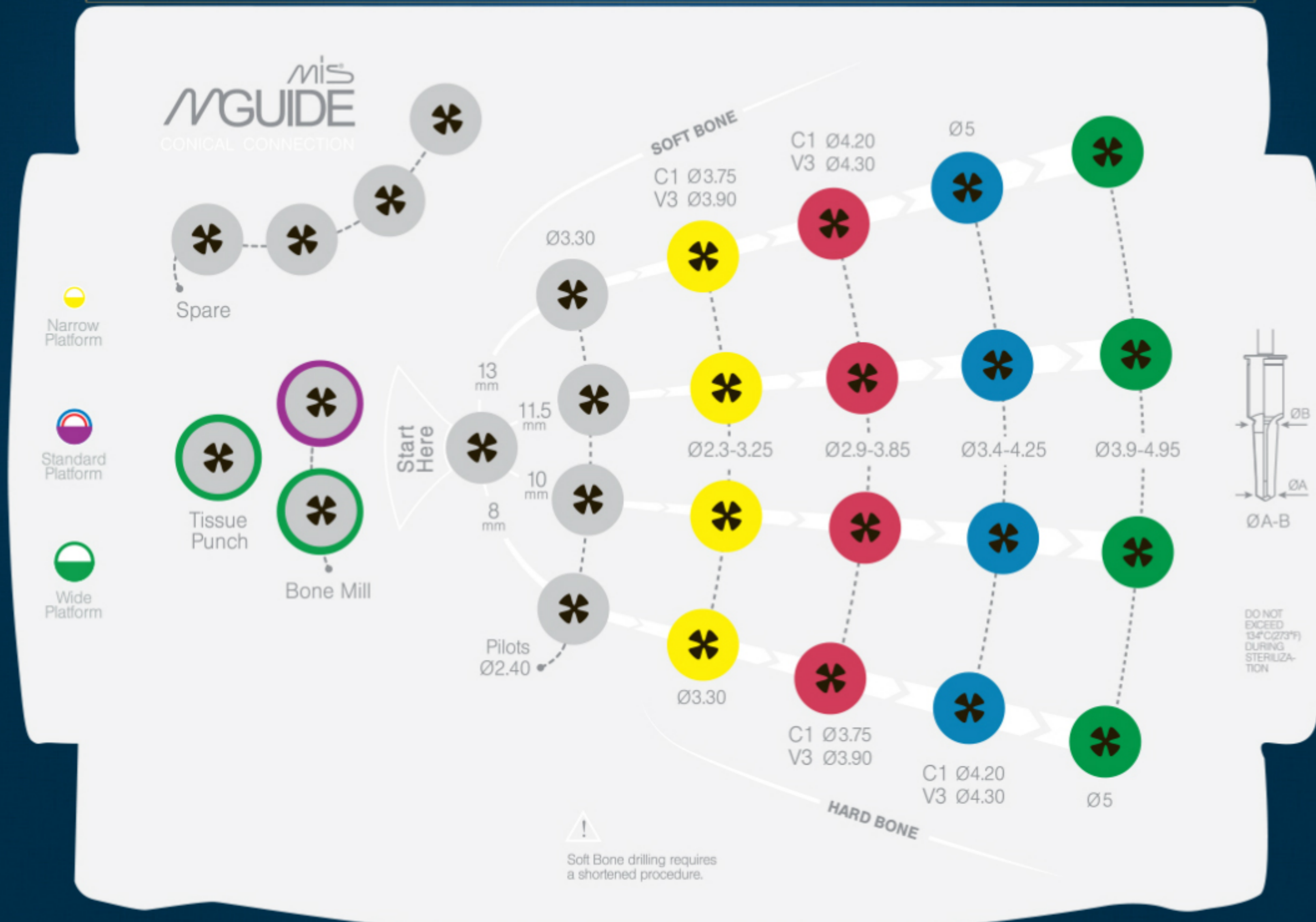


MGUIDE Surgical Set

Conical Connection

Contents

MGUIDE Surgical Kit



MGUIDE tissue punch >



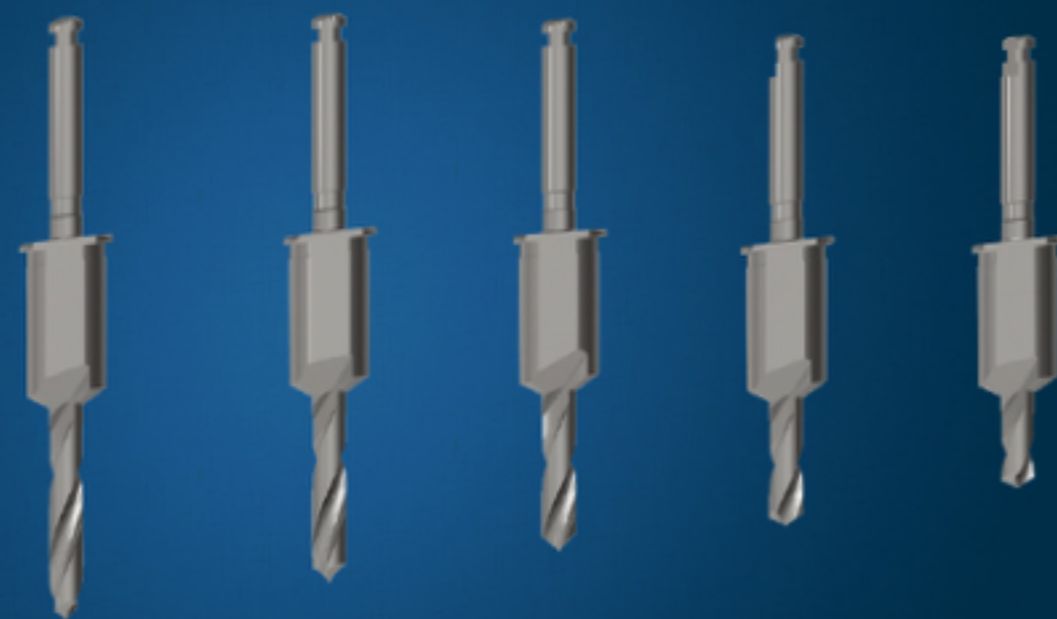
MGUIDE bone mill >



- MGUIDE tissue punch, MGUIDE bone mill
- MGUIDE pilot drill
- MGUIDE drill for 3.30
- MGUIDE drill for 3.75 and 3.90
- MGUIDE drill for 4.20 and 4.30



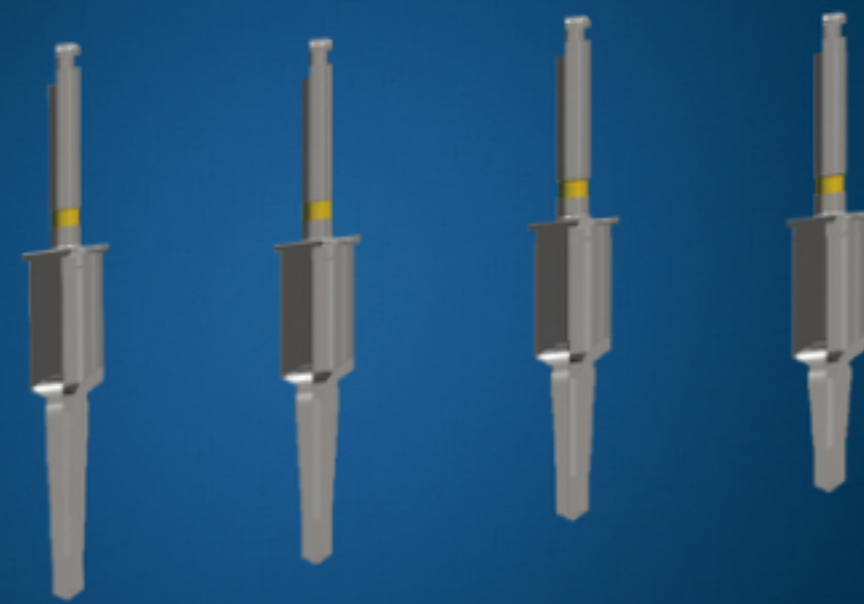
MGUIDE pilot drill >



- MGUIDE tissue punch, MGUIDE bone mill
- **MGUIDE pilot drill**
- MGUIDE drill for 3.30
- MGUIDE drill for 3.75 and 3.90
- MGUIDE drill for 4.20 and 4.30



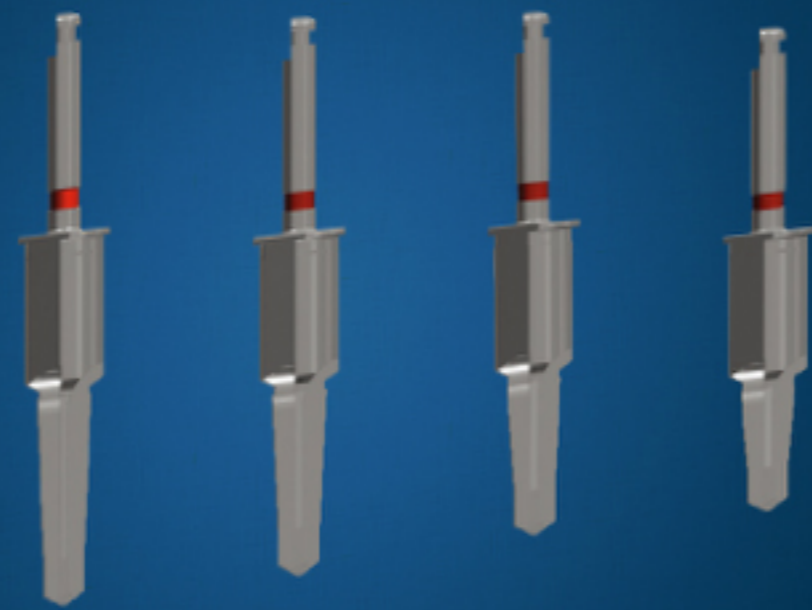
MGUIDE drill for Ø3.30 >



- MGUIDE tissue punch, MGUIDE bone mill
- MGUIDE pilot drill
- **MGUIDE drill for 3.30**
- MGUIDE drill for 3.75 and 3.90
- MGUIDE drill for 4.20 and 4.30



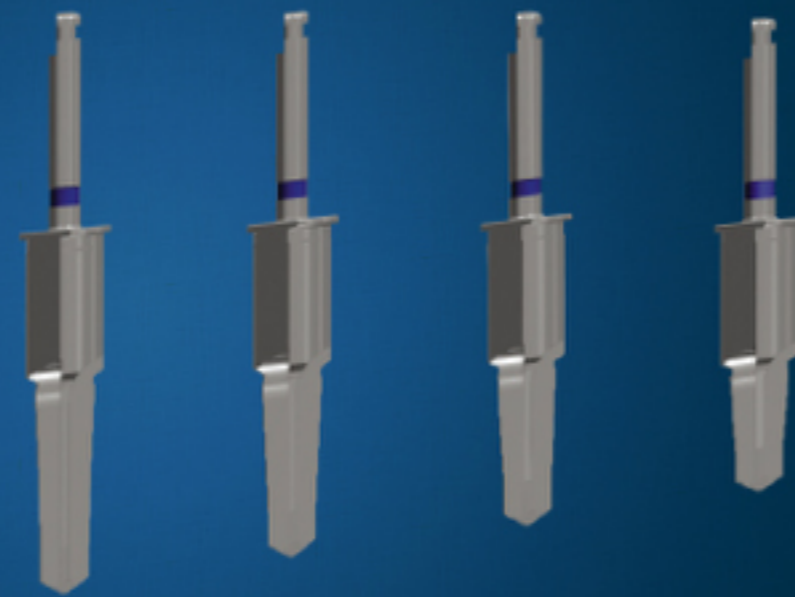
MGUIDE drill for $\varnothing 3.90$ >



- MGUIDE tissue punch, MGUIDE bone mill
- MGUIDE pilot drill
- MGUIDE drill for 3.30
- **MGUIDE drill for 3.75 and 3.90**
- MGUIDE drill for 4.20 and 4.30



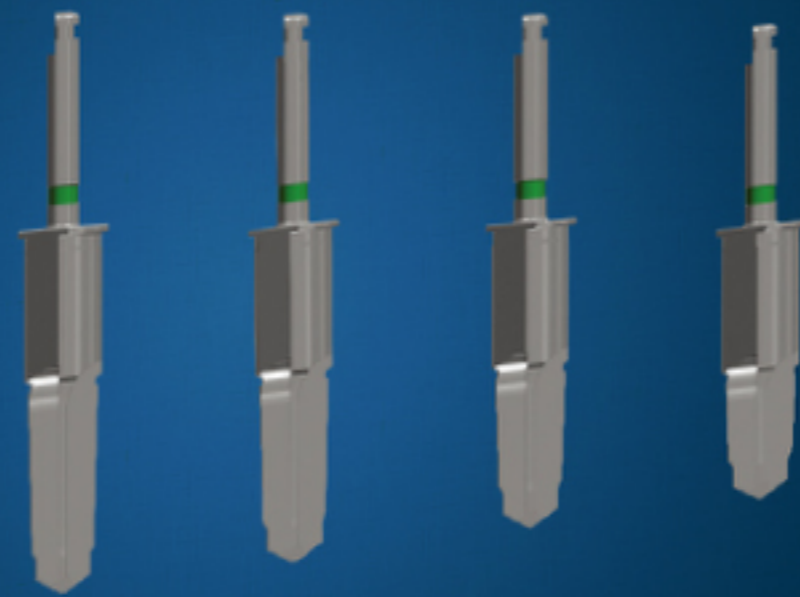
MGUIDE drill for $\text{Ø}4.20$ and $\text{Ø}4.30$ >



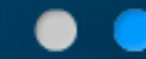
- MGUIDE tissue punch, MGUIDE bone mill
- MGUIDE pilot drill
- MGUIDE drill for 3.30
- MGUIDE drill for 3.75 and 3.90
- MGUIDE drill for 4.20 and 4.30



MGUIDE drill for Ø5 >>



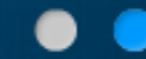
- MGUIDE drill for 5
- MGUIDE drill length gauge



MGUIDE drill for Ø5 >

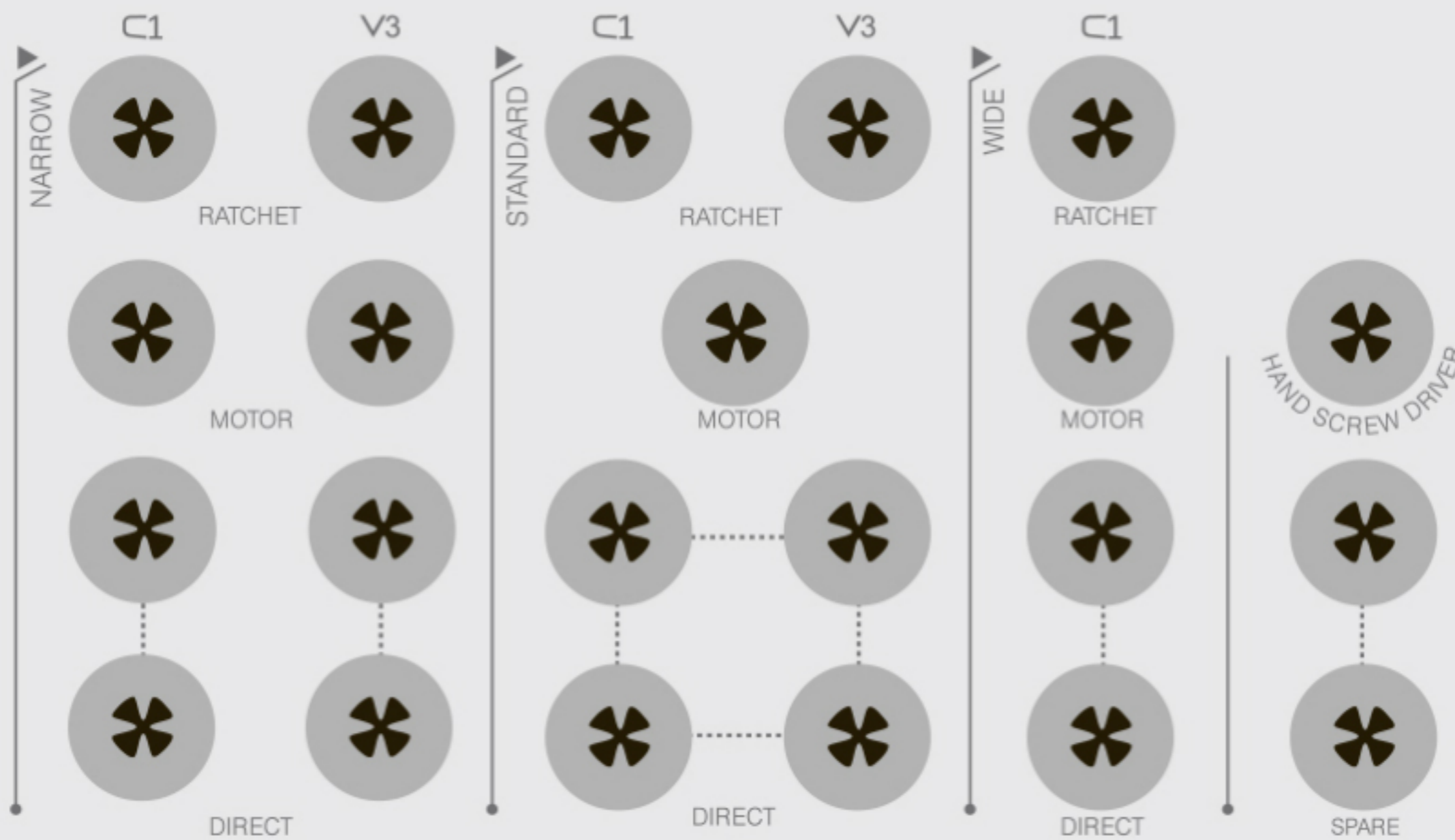


- MGUIDE drill for 5
- MGUIDE drill length gauge



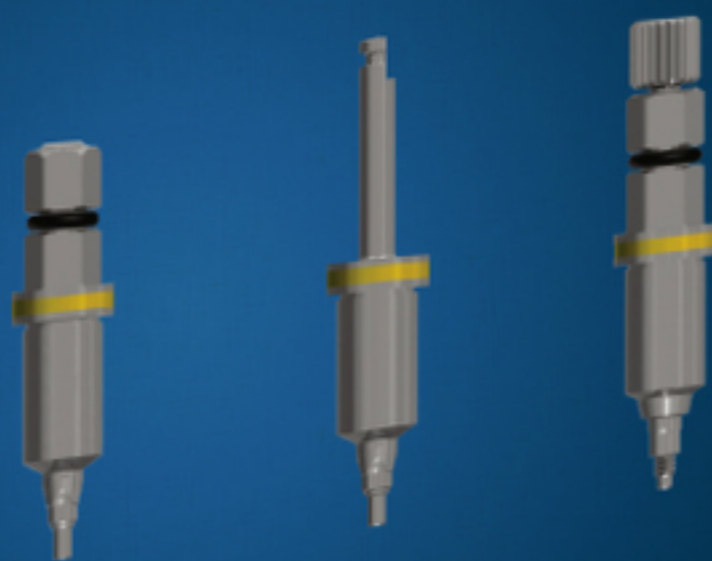
MIS
MGUIDE
CONICAL CONNECTION TOOLS

FIXATION DRILL Ø2 FIXATION PINS TEMPLATE ANCHORING SCREWS



DO NOT EXCEED
134°C (273°F) DURING
STERILIZATION

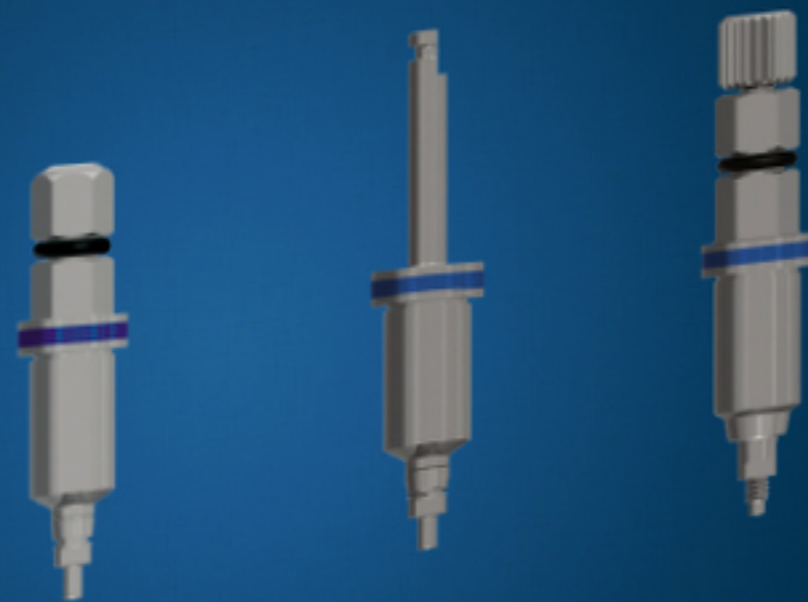
C1 NARROW PLATFORM >>



- C1 NARROW PLATFORM
- V3 NARROW PLATFORM
- V3/C1 STANDARD PLATFORM
- C1 WIDE PLATFORM
- Other Tools



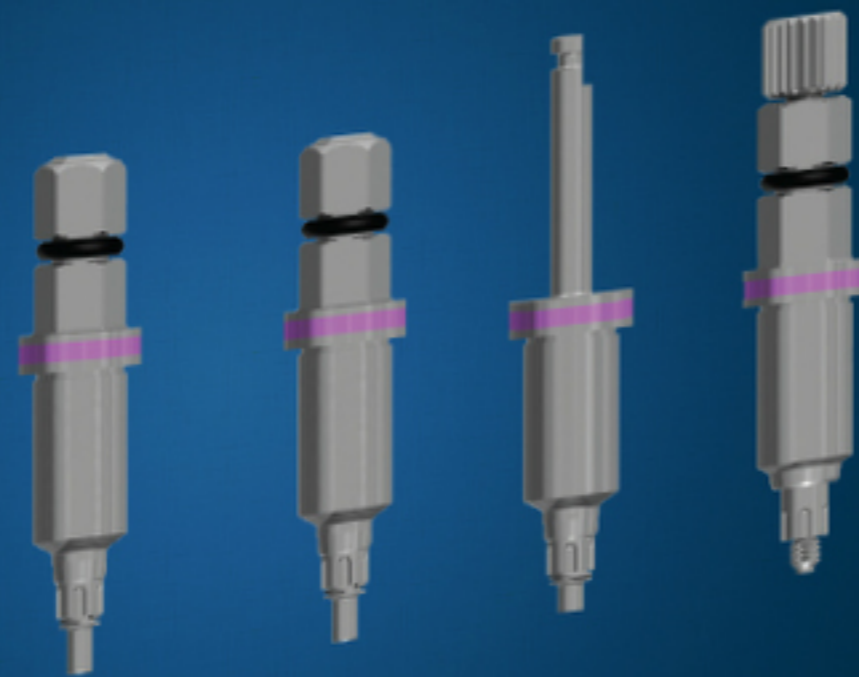
V3 NARROW PLATFORM >



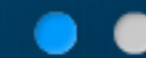
- C1 NARROW PLATFORM
- V3 NARROW PLATFORM
- V3/C1 STANDARD PLATFORM
- C1 WIDE PLATFORM
- Other Tools



V3/C1 STANDARD PLATFORM >



- C1 NARROW PLATFORM
- V3 NARROW PLATFORM
- V3/C1 STANDARD PLATFORM
- C1 WIDE PLATFORM
- Other Tools



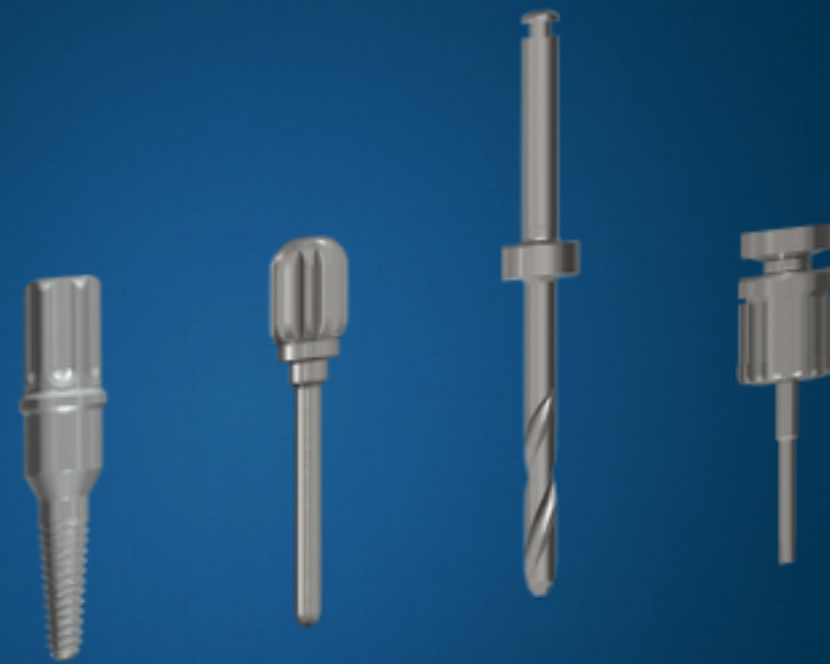
C1 WIDE PLATFORM >



- C1 NARROW PLATFORM
- V3 NARROW PLATFORM
- V3/C1 STANDARD PLATFORM
- **C1 WIDE PLATFORM**
- Other Tools



OTHER TOOLS >



- C1 NARROW PLATFORM
- V3 NARROW PLATFORM
- V3/C1 STANDARD PLATFORM
- C1 WIDE PLATFORM
- Other Tools



Designed to offer a solution for narrow spaces between teeth. The kit contains unique drills and tools required to place 3.3, 3.75 & 3.9mm implants.



MGUIDE Narrow Sleeve

mis[®]

THANK YOU

