

PROSTHETICS

DENITAL
CATALOG

WHAT DO YOU CALL A CONVICTION
THAT EVERYTHING CAN ALWAYS BE
A LITTLE BETTER, EASIER AND MORE
RELIABLE?

WE CALL IT
Upgrade Dentistry

With expertise and enthusiasm, COLTENE turned this claim into reality. We know exactly our end customers needs and want and work tirelessly to provide them with innovative and smart solutions.

This is not an empty promise, it is our mission. Upgrading Dentistry makes dental treatments more effective, safe and economical for dental professionals and patients.

Better Quality. Better Reliability. Better Practise.



www.coltene.com

**INDICATION
PRODUCT TYPE**

**FIELD OF APPLICATION
PROPERTIES**

PRODUCT NAME

RETRACTION

PREPARATION WITH CORDS

Retraction Cords	Air-jet textured	ROEKO Comprecord	8
	Braided / twisted, impregnated / not impregnated	ROEKO Retracto	8
	Twisted with malleable, fine wire-core, not impregnated	ROEKO Stay-put	8
Accessories	For placement of retraction cords	Retraction Cord Packer	8

PREPARATION WITH SILICONE

Silicone foam	Expanding and addition-curing silicone foam, time-saving, non-traumatic	Magic FoamCord	10
Accessories	Standard compression caps, to stop bleeding and to dry tooth stumps	ROEKO Comprecap	9
	Anatomically shaped compression caps, to stop bleeding and to dry tooth stumps	ROEKO Comprecap Anatomic	9

IMPREGNATION

Pretreatment of gingiva	To pretreat the gingiva and impregnation of retraction cords, with 10% aluminium chloride hexahydrate	Gingiva Liquid	9
--------------------------------	---	----------------	---

BITE REGISTRATION

A-Silicone	Mousse-like, smooth consistency with very short, patient-friendly intraoral setting time, good milling and cutting properties	JET BLUE BITE fast JET BLUE BITE superfast	16
	Classical bite registration material, ideal stability and simple handling, good milling and cutting properties	Jet Bite	17
Accessories	Accessories for microSystem and System 50	JET BLUE BITE, Jet Bite	17

IMPRESSION

A-SILICONE

		2S	1S	MP	FUI	FI		
Wash material	Premium A-Silicone, low and medium viscosity, hydrocolloid-like property, innovative surface affinity with very low contact angle, autoclavable	●	●	○	●	○	AFFINIS light body / fast AFFINIS regular body / fast	20
	Latest generation with especially good flow properties, metallic colour (gold and silver) for improved readability, autoclavable	●	●	○	●	○	AFFINIS PRECIOUS light body AFFINIS PRECIOUS regular body	21
	Modernized product line of PRESIDENT. Three different wash materials including additional very low viscous Xtra light body	●	●	○	●	○	PRESIDENT The Original Xtra light body PRESIDENT The Original light body PRESIDENT The Original regular body	26

**INDICATION
PRODUCT TYPE**

**FIELD OF APPLICATION
PROPERTIES**

PRODUCT NAME

2S 1S MP FUI FI

Tray material

Premium putty from 380 ml cartridge, smooth consistency with high final hardness, autoclavable	● ● ○ ○ ○	AFFINIS putty	23
Smooth consistency from the pot with medium final hardness, autoclavable	● ● ○ ○ ○	AFFINIS putty soft/fast	23
Especially smooth consistency from the pot with medium final hardness, autoclavable	● ● ○ ○ ○	AFFINIS putty super soft	23
Viscous consistency from the cartridge with medium final hardness, innovative surface affinity, autoclavable	○ ● ○ ● ●	AFFINIS heavy body/fast	22
Viscous heavy body consistency in unique black colour for a better contrast with wash materials, especially AFFINIS PRECIOUS	○ ● ○ ● ●	AFFINIS heavy body BLACK EDITION	24
Modernized product line of PRESIDENT. Three different putties. Very soft and smooth for comfortable hand mixing	● ● ○ ○ ○ ● ● ○ ○ ○ ● ● ○ ○ ○	PRESIDENT The Original putty PRESIDENT The Original putty soft PRESIDENT The Original putty super soft	27
Highly viscous material which perfectly fits to new Xtra light body	○ ● ○ ● ●	PRESIDENT The Original heavy body	27
With the line extension of the monophasic material MonoBody, implant impressions can be done even more precisely	● ● ● ● ●	PRESIDENT The Original MonoBody	27
Medium viscosity consistency with low final hardness, specifically for single phase impressions	● ● ● ● ●	AFFINIS MonoBody	22

Monophase material

C-SILICONE

Wash material

Premium C-Silicone with A-Silicone quality, low to medium viscosity consistency, 7-day dimensional stability, variable setting time by dosing the activator, surface-active	● ● ○ ● ○ ● ● ○ ● ○	Speedex light Speedex medium	34
Low viscosity wash material, outstanding mixing control with colour change during mixing, special application aid	● ● ○ ● ○	Rapid Liner	35
Classical C-Silicone family with four different consistencies for every indication	● ● ○ ● ○ ● ● ○ ● ○	Coltex extrafine, Coltex fine Coltex medium	36
Classical putty with high final hardness	● ● ○ ○ ○	Coltoflax	36
Premium C-Silicone putty from the pot	● ● ○ ○ ○	Speedex putty	34
Classical putty in the system pack	● ● ○ ○ ○	Rapid putty	35
Classical putty in the system pack, smooth consistency with low final hardness	● ● ○ ○ ○	Rapid putty soft	35

C-SILICONE

Activator

		Speedex, Rapid, Rapid Liner, Coltex mix, Coltoflax mix, Coltex extrafine mix, PSI Cat.	37
Accessories		A-Silicone, C-Silicone	29

INDICATION PRODUCT TYPE	FIELD OF APPLICATION PROPERTIES	PRODUCT NAME	
----------------------------	------------------------------------	--------------	--

PRESSURE-SPOT IDENTIFICATION

C-SILICONE

	Ideal material based on polysiloxane for simple and reliable identification of pressure spots	Pressure Spot Indicator – PSI	36
	Activator	PSI CATALYST	37

LABORATORY

GINGIVA REPRODUCTION

A-Silicone	Scannable gingiva mask from the automix cartridge for digital registration of the gingival contours	GI-MASK 3D	41
	A-Silicone gingival mask from the Automix cartridge for precise registration of the gingival contours, natural and aesthetic colouring	GI-MASK Automix New Formula	41
C-Silicone	C-Silicone gingival mask, Handmix	GI-MASK	41

LABORATORY SILICONES AND TOOLS

Silicone putty	Silicone putty with high final hardness, for keys, stamps and block-outs	Lab-Putty	42
	Silicone putty with a very high final hardness of approx. 90 Shore A, high heat resistance (300 °), for fabricating soldering models	Lab-Putty hard	42
Modelmaking	Model and die fabrication system	Pindex	46
	Removable precision dies without dowel pins. Simple, quick, and accurate.	Accu-Trac	47
Accessories	Mixing accessories for proper mixing without sticking	HYGENIC Mixing Bowls, HYGENIC Spatula	48

WAXES

Modelling and plate waxes Bite rims and templates	Modelling and plate waxes, bite rims and templates in horseshoe shape. For protecting the functional margin or expanding the impression tray and for model fabrication	HYGENIC waxes	44
--	--	---------------	----

Gingiva Retraction

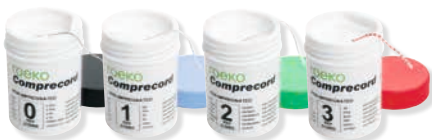
Impregnation

Retraction Cords

Prosthetics

ROEKO Comprecord

Comprecord is an air texturized retraction cord with a stable structure and a great total volume which makes Comprecord highly absorbent. The cord has a pliable structure that allows Comprecord to adapt easily to the sulcus without fraying and shedding fibers.



Advantages of Comprecord:

- > pliable structure
- > outstanding absorbency
- > easy to place in the sulcus
- > does not fray and shed fibers
- > color coded for easy distinction of sizes

Non impregnated, 225 cm		
0	x-fine	515 000
1	fine	515 001
2	medium	515 002
3	thick	515 003

ROEKO Retracto



Braided		
Impregnated with aluminium chloride hexahydrate, 225 cm		
1	fine	510 001
2	medium	510 002
3	thick	510 003

Non impregnated, 225 cm		
0	x-fine	511 000
1	fine	511 001
2	medium	511 002
3	thick	511 003

Twisted		
Non impregnated, 225 cm		
0	x-fine	523 000
1	fine	523 001
2	medium	523 002

ROEKO Stay-put

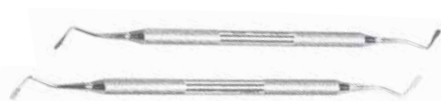


Stay-put combines the advantages of a braided retraction cord with the adaptability of a fine metal filament. The pliable core is so effective that the cord is not only easy to place in the sulcus but it stays there.

Non impregnated, 183 cm		
0	x-fine	521 000
1	fine	521 001

2	medium	521 002
3	thick	521 003

ROEKO Retraction Cord Packer



Retraction Cord Packer		
Execution smooth		520 000
Execution serrated		520 001

ROEKO Comprecap



ROEKO Comprecap compression caps stop bleeding naturally – by compression and control moisture. The use is simple and supports impression preparation regardless of the retraction technique.

Set	530 000
Content 1/3/5	150 pcs

Single Sizes		
1	120 pcs	530 008
1	600 pcs	531 008
3	120 pcs	530 010
3	600 pcs	531 010
5	60 pcs	530 014
5	400 pcs	531 014



Comprecap anatomic

Are anatomically formed compression caps with semicircled shaped spaces on two opposite sides and can therefore be easily placed on adjacent teeth.

Set	531 299
Content 1/3/5	120 pcs

Single Sizes		
1	120 pcs	531 201
3	120 pcs	531 203
5	60 pcs	531 205

ROEKO Gingiva Liquid



An astringent, styptic solution with 10% aluminium chloride hexahydrate. No cardiovascular problems as it does not contain Epinephrine. For treatment of the gingiva before taking an impression and to impregnate retraction cords.

ROEKO Gingiva Liquid	524 000
Content	1 × 10 ml

Magic FoamCord



Magic FoamCord is the first expanding PVS material designed for easy and fast retraction of the sulcus without the potentially traumatic and time consuming packing of retraction cord.

Magic FoamCord Intro Kit	6735
Cartridges	2 × 50 ml
Universal Mixing Tip	24 pcs
Oral Tips Yellow	24 pcs
Comprecap anatomic	45 pcs

Magic FoamCord Refill	6737
Cartridges	2 × 50 ml

System 50 Accessories		
Universal Mixing Tip	40 pcs	60019663
Oral Tips Yellow	100 pcs	6555

Magic FoamCord had been developed in a free partnership with Prof. DDr. Dumfahrt and is the first expanding PVS material designed for easy and fast retraction of the sulcus without the potentially traumatic and time consuming packing of retraction cord.

How it works!

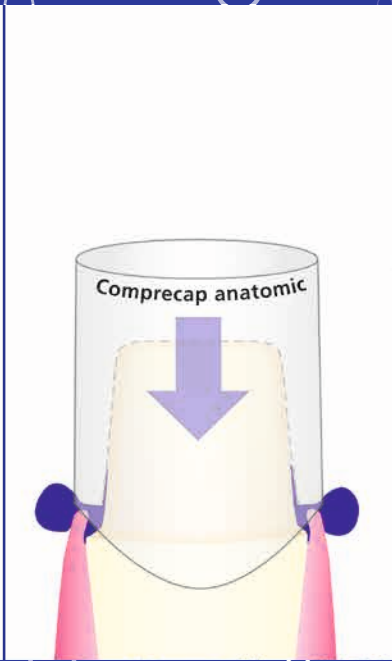


2 min*: Foaming action complete; 5 min*: Material completely cured.
Total Expansion 160%

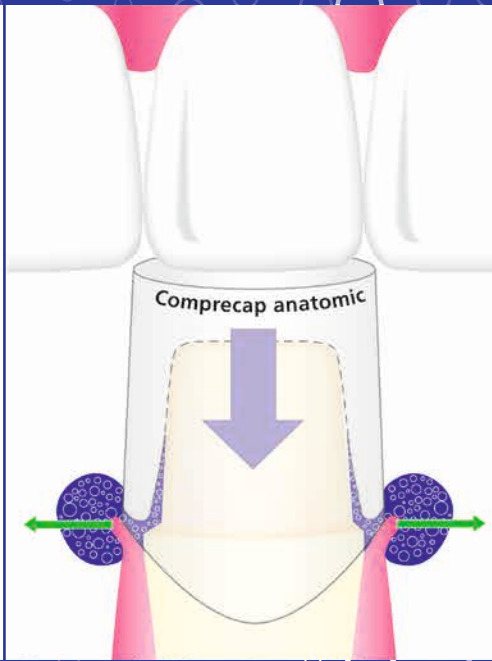
1



2



3



4



Magic FoamCord®

Gingiva retraction without cords!

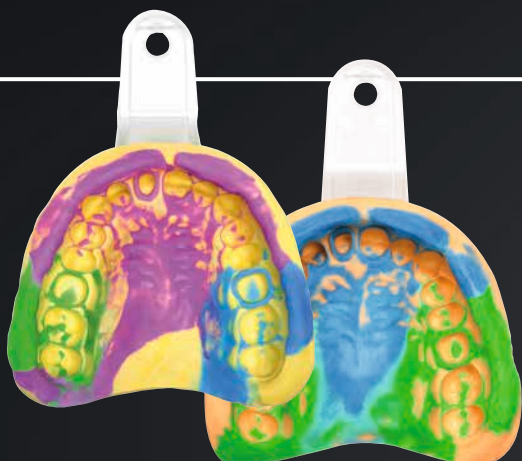
Benefits

- › Non-traumatic method of temporary gingival retraction
- › Easy and fast application directly to the sulcus without pressure or packing
- › Comfortable to the patient
- › No haemostatic chemicals to contaminate the impression site – no need for extensive rinsing
- › Outstanding retraction for perfect impressions



Impression
A-Silicone

Prosthetics



AFFINIS

The innovative surface affinity and optimised flow properties of AFFINIS ensure perfect impressions. The premium A-Silicone excels by virtue of fast wetting of the tooth and gingiva.

PRESIDENT® The Original

The introduction of PRESIDENT in 1975 – the first A-Silicone in the market – is considered a milestone in the development of high-precision dental impression materials. With the use of polyvinylsiloxane (PVS) elastomers for the first time PRESIDENT users reached an unprecedented dimensional stability and precision, which today still characterizes an A-Silicone. The PRESIDENT brand is still convincing as a traditional product line of COLTENE with its sovereign quality. On the occasion of the 40th anniversary of PRESIDENT, the first A-Silicone line has been relaunched under the new brand name PRESIDENT The Original with additional consistencies and refreshed colors.



AFFINIS® BLACK EDITION

The black tray material AFFINIS heavy body BLACK EDITION reaches with gold or silver coloured AFFINIS PRECIOUS excellent readability of the impression. The unique colour combination displays details even more precisely and supports the qualitative assessment of the impression result.

Visible precision with love for details.

Brief description

AFFINIS®

Premium A-Silicone: top quality
Universal product range: putty, tray, 6 × wash
Dosage form in cartridges: 25 ml, 50 ml, 75 ml, 380 ml
Unique consistencies: AFFINIS PRECIOUS, BLACK EDITION
Optimal flow properties: top precision
Top dimensional stability: fitting accuracy
Automix: simple handling
Autoclavable: protection against infections
Smallest contact angle: best wettability

Consistencies

WASH

light body
 light body fast
 PRECIOUS light body
 regular body
 regular body fast
 PRECIOUS regular body

TRAY

MonoBody
 heavy body
 heavy body fast
 putty soft
 putty super soft
 putty soft fast
 putty System 360

PRESIDENT® The Original

Reliable A-Silicone: classic and modern version
Two forms of mixing: Automix and Handmix
Top dimensional stability: high quality
Optimal flow properties: high precision
Dosage form in cartridges: 25 ml, 50 ml, 75 ml, 380 ml
Dosage form in tubes: Base and Activator each 53 ml

WASH

xtra light body
 light body
 regular body

TRAY

heavy body
 putty
 putty soft
 putty soft fast

PERFECT IMPRESSIONS



BLACK

WITH LOVE FOR DETAILS

AFFINIS[®] BLACK EDITION



The black tray material AFFINIS heavy body BLACK EDITION reaches with gold or silver coloured AFFINIS PRECIOUS excellent readability of the impression. The unique colour combination displays details even more precisely and supports the qualitative assessment of the impression result.

Visible precision with love for details.



JET BLUE BITE



Exceptional handling with firm, accurate, fast set

JET BLUE BITE bite registration material flows with a smooth whipped-cream consistency exactly where you want it in a predictable quantity and ideal ribbon pattern. It offers a fast oral setting-time and sets rock hard for greater accuracy but is still flexible enough for easy trimming or cutting. The superior handling characteristics are the key for a perfect occlusal fit on the first try.

- › Stays exactly where you want it
- › No resistance to closure, no rebound!
- › Rock hard for accuracy, yet flexible for easy trimming
- › Pick your ideal speed:

Fast 30 s working time
40 s oral setting time

Superfast 20 s working time
30 s oral setting time

JET BLUE BITE fast



JET BLUE BITE fast 50 ml Single Pack	6491
Cartridge	1 × 50 ml
Universal Mixing Tips	6 pcs
Spreader Tips	6 pcs

JET BLUE BITE fast 50 ml Refill	6495
Cartridge	4 × 50 ml
Universal Mixing Tips	12 pcs
Spreader Tips	12 pcs

JET BLUE BITE superfast



JET BLUE BITE superfast 50 ml Single Pack	6493
Cartridge	1 × 50 ml
Universal Mixing Tips	6 pcs
Spreader Tips	6 pcs

JET BLUE BITE superfast 50 ml Refill	6497
Cartridge	4 × 50 ml
Universal Mixing Tips	12 pcs
Spreader Tips	12 pcs

Jet Bite



Easy handling and ideal stability facilitate the bite registration. The dental technician appreciates how well the material can be formed and trimmed.

Jet Bite microSystem		6440
Cartridges	4 × 25 ml	
Universal Mixing Tips	18 pcs	
Spreader Tips	18 pcs	

Jet Bite microSystem		6450
Refill package cartridges	20 × 25 ml	

Jet Bite 50 ml		6400
Cartridges	2 × 50 ml	
Universal Mixing Tips	12 pcs	
Spreader Tips	12 pcs	

Jet Bite 50 ml		6410
Refill package cartridges	20 × 50 ml	

JET BLUE BITE / Jet Bite Accessories



microSystem		
microSystem Dispenser	1 pc	6270
Spreader Tips	100 pcs	6223
Universal Mixing Tips	40 pcs	60019663

50 ml System		
Dispenser 50/75 ml	1 pc	6900
Spreader Tips	100 pcs	6223
Universal Mixing Tips	40 pcs	60019663

AFFINIS®

Perfect Impressions

AFFINIS® – The crowning of
A-Silicones for over 15 years



 **COLTENE**



Affinity on moist tooth structure



AFFINIS – a bench mark in impression technology

AFFINIS, an A-Silicone, differs in three characteristic features from other surface activated impression materials:

Innovative surface affinity

The differentiating element of AFFINIS is a fast and innovative affinity of mixed material to moist tooth structure and tissue (gingiva).

Optimized flow

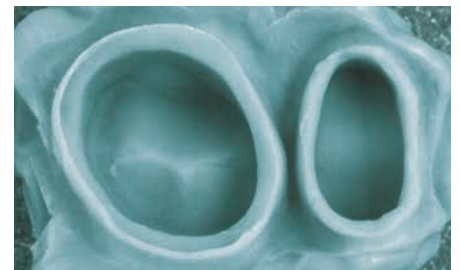
AFFINIS however, based on its surpassing combination of additives which are capable of breaking material structures, displays a very low barrier to flow (self-contouring consistency) At the same time, the mixed material is optimal thixotropic not to drip off the preparation.

Better models

AFFINIS, due to its synergistic and extremely active surfactant system, displays a fast and outstanding wetting by water of the set impression. When pouring the gypsum, the dental technician will appreciate these properties.

First Ever Autoclavable Impressions

All AFFINIS and AFFINIS PRECIOUS impressions are now autoclavable at 134°C without the loss of its well-known and appreciated AFFINIS physical properties. The new autoclavable AFFINIS impression material with a heat-resistant impression tray and special adhesive provides an integrated system for completely new possibilities in prevention. AFFINIS impressions – not only clean, but also sterile.



A no void AFFINIS impression as seen by the dentist

AFFINIS light body



AFFINIS light body microSystem	6500
Cartridges	4 × 25 ml
Universal Mixing Tips	18 pcs
Oral Tips	18 pcs

AFFINIS light body microSystem	6575
Refill package cartridges	20 × 25 ml

AFFINIS light body 50 ml	6501
Cartridges	2 × 50 ml
Universal Mixing Tips	12 pcs

AFFINIS light body 50 ml	6580
Refill package cartridges	20 × 50 ml

AFFINIS fast light body



AFFINIS fast light body 50 ml	6601
Cartridges	2 × 50 ml
Universal Mixing Tips	12 pcs

AFFINIS fast light body 50 ml	6680
Refill package cartridges	20 × 50 ml

AFFINIS regular body



AFFINIS regular body microSystem	6510
Cartridges	4 × 25 ml
Universal Mixing Tips	18 pcs
Oral Tips	18 pcs

AFFINIS regular body microSystem	6577
Refill package cartridges	20 × 25 ml

AFFINIS regular body 50 ml	6511
Cartridges	2 × 50 ml
Universal Mixing Tips	12 pcs

AFFINIS regular body 50 ml	6582
Refill package cartridges	20 × 50 ml

AFFINIS fast regular body



AFFINIS fast regular body 50 ml	6611
Cartridges	2 × 50 ml
Universal Mixing Tips	12 pcs

AFFINIS fast regular body 50 ml	6682
Refill package cartridges	20 × 50 ml

AFFINIS PRECIOUS

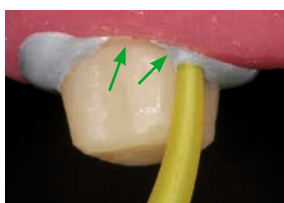


Superior flow properties where it counts – In the mouth...

AFFINIS PRECIOUS polyvinylsiloxane (PVS) wash materials have a contact angle of only 10°. Its superior flow properties allow the impression material to easily capture all critical surface detail of the preparations in a wet environment.

...and in the lab

AFFINIS PRECIOUS was developed to produce accurate results in the mouth and in the lab. The wettability allows the wet gypsum to flow more easily into the impression, producing more accurate stone models. An accurate model is the key for the lab technician to create proper fitting restorations.



AFFINIS PRECIOUS flows directly into the sulcus preventing air entrapments.



Thixotropic properties prevent slumping and dripping.



AFFINIS PRECIOUS wash materials produce accurate, void free impressions.

AFFINIS PRECIOUS light body



AFFINIS PRECIOUS light body 50 ml	6775
Cartridges	2 x 50 ml
Universal Mixing Tips	12 pcs

AFFINIS PRECIOUS light body mS 25 ml	6779
Cartridges microSystem	4 x 25 ml
Universal Mixing Tips	18 pcs
Oral Tips	18 pcs

AFFINIS PRECIOUS regular body



AFFINIS PRECIOUS regular body 50 ml	6776
Cartridges	2 x 50 ml
Universal Mixing Tips	12 pcs

AFFINIS PRECIOUS regular body mS 25 ml	6780
Cartridges microSystem	4 x 25 ml
Universal Mixing Tips	18 pcs
Oral Tips	18 pcs

AFFINIS MonoBody



AFFINIS MonoBody is tissue friendly and neutral in taste without side effects or patient discomfort. After a short oral setting time of 3.30 min the AFFINIS impression can be easily removed without residue or distortion. The impression is desinfectable without dimensional changes. The high elastic recovery of 99.75 % and dimensional change of just 0.2% are the essential characteristics for accurate restorations.

AFFINIS MonoBody 75 ml	6547
Cartridges	2 x 75 ml
Mixing Tips Turquoise	8 pcs

AFFINIS MonoBody 75 ml	6587
Refill package cartridges	20 x 75 ml

AFFINIS MonoBody System 360 Starter Kit	6480
Base and Catalyst	1 x 380 ml
Fixation Ring	1 pc
Dynamic Mixing Tips Yellow	10 pcs

AFFINIS MonoBody System 360	6482
Refill package Base and Catalyst	2 x 380 ml
Fixation Ring	1 pc

AFFINIS heavy body



With its surface affinity technologie and its ideal thixotropic characteristics AFFINIS heavy body builds up an ideal intraoral pressure, that which drives material easily into all critical areas.

AFFINIS heavy body 75 ml	6520
Single pack Cartridges	2 x 75 ml
Mixing Tips Turquoise	8 pcs

AFFINIS heavy body 75 ml	6585
Refill package cartridges	20 x 75 ml

AFFINIS heavy body 50 ml	6590
Single pack Cartridges	2 x 50 ml
Mixing Tips Turquoise	6 pcs

AFFINIS heavy body 50 ml	6595
Refill package cartridges	20 x 50 ml

AFFINIS heavy body System 360 Starter Kit	6485
Base and Catalyst	1 x 380 ml
Fixation Ring	1 pc
Dynamic Mixing Tips Yellow	10 pcs

AFFINIS heavy body System 360	6487
Refill package Base and Catalyst	2 x 380 ml
Fixation Ring	1 pc

AFFINIS fast heavy body



AFFINIS fast heavy body 75 ml	6620
Cartridges	2 x 75 ml
Mixing Tips Turquoise	8 pcs

AFFINIS fast heavy body 75 ml	6685
Refill package cartridges	20 x 75 ml

AFFINIS fast heavy body 50 ml	6650
Single pack Cartridges	2 x 50 ml
Mixing Tips Turquoise	6 pcs

AFFINIS fast heavy body 50 ml	6652
Refill package cartridges	20 x 50 ml

AFFINIS putty System 360



AFFINIS System 360 putty is truly kneadable, whose strong “firm body” is immediately noticeable once dispensed from the mixing unit with no signs of stickiness. The putty material can be manually-kneaded immediately in the hands without sticking to the gloves. This facilitates individual pre-forming of the tray material based on the clinical situation. The dentist is comforted with a reliable, automatically-mixed putty material for successful precision impressions.

AFFINIS putty System 360 Starter Kit		6471
Base and Catalyst	1 × 380 ml	
Fixation Ring	1 pc	
Dynamic Mixing Tips Yellow	10 pcs	

AFFINIS putty System 360 Single Pack		6472
Refill package Base and Catalyst	2 × 380 ml	
Fixation Ring	1 pc	

AFFINIS putty soft / fast



AFFINIS putty soft is a standard putty in the AFFINIS putty range. The compatible consistencies of the base and catalyst ensure for quick and easy mixing.

AFFINIS putty soft		6530
Base and Catalyst	2 × 300 ml	

AFFINIS fast putty soft		6531
Base and Catalyst	2 × 300 ml	

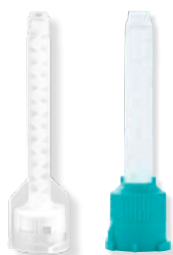
AFFINIS putty super soft



AFFINIS putty super soft is smooth, quick and easy to mix. With a viscosity similar to heavy body, formulated to flow and guide AFFINIS wash materials accurately to clinically important surfaces and with ideal mixing and oral setting times, the putty achieves perfect impressions without voids and margin distortions.

AFFINIS putty super soft		6535
Base and Catalyst	2 × 300 ml	

System 50 / 75 Accessories



System 50/75 Accessories		
Dispenser 50/75 ml	1 pc	6900
Universal Mixing Tips	40 pcs	60019663
Universal Mixing Tips	100 pcs	60019694
Mixing Tips Turquoise	40 pcs	6552
Oral Tips Yellow	100 pcs	6555
Spreader Tips	100 pcs	6223
Plunger, 75 ml	1 pcs	6985

microSystem Accessories		
microSystem Dispenser	1 pc	6270
Oral Tips	100 pcs	6210
Spreader Tips	100 pcs	6223

System 360 Accessories		
Dynamic Mixing Tips Yellow	40 pcs	6162
Fixation Ring	1 pc	6163

AFFINIS BLACK EDITION



The new black tray material AFFINIS heavy body BLACK EDITION reaches with gold- or silver coloured AFFINIS PRECIOUS excellent readability of the impression. The unique colour combination displays details even more precisely and supports the qualitative assessment of the impression result.

AFFINIS BLACK EDITION System 75



heavy body	60019554
Cartridges	2 × 75 ml
Mixing Tips	8 pcs

AFFINIS BLACK EDITION putty System 360



heavy body System 360 Starter Kit	60019774
Base and Catalyst	1 × 380 ml
Fixation Ring	1 pc
Dynamic Mixing Tips	10 pcs

heavy body System 360	60019776
Base and Catalyst	2 × 380 ml
Fixation Ring	1 pc

A-SILICONE IMPRESSION MATERIAL

**A SMALL STEP FOR DENTISTS
A GREAT STEP FOR DENTISTRY**



PRESIDENT

The Original

The introduction of PRESIDENT as the first A-Silicone in the market is considered a milestone for dental impression materials. With the use of polyvinylsiloxane (PVS) elastomers for the first time PRESIDENT users reached an unprecedented dimensional stability and precision. To celebrate the 40th anniversary, the well-established brand has been modernized as **PRESIDENT The Original** with new consistencies and colors.



**PRESIDENT The Original
Xtra light body, light body,
regular body**

Xtra light body microSystem	60019932
Cartridges	4 × 25 ml
Universal Mixing Tips	12 pcs

light body microSystem	60019933
Cartridges	4 × 25 ml
Universal Mixing Tips	12 pcs

light body	60019938
Cartridges	2 × 50 ml
Universal Mixing Tips	12 pcs

regular body microSystem	60019935
Cartridges	4 × 25 ml
Universal Mixing Tips	12 pcs

regular body	60019939
Cartridges	2 × 50 ml
Universal Mixing Tips	12 pcs

Xtra light body	60019937
Cartridges	2 × 50 ml
Universal Mixing Tips	12 pcs

light body microSystem	60019934
Cartridges	20 × 25 ml

Tubes light body	60019949
Base	1 × 53 ml
Catalyst	1 × 53 ml

regular body microSystem	60019936
Cartridges	20 × 25 ml

Tubes regular body	60019950
Base	1 × 53 ml
Catalyst	1 × 53 ml



PRESIDENT The Original MonoBody / heavy body



MonoBody System 360 Starter Kit 60019945

Cartridges	1 × 380 ml
Dynamic Mixing Tips	10 pcs
Fixation Ring	1 pcs

MonoBody System 360 Refill 60019946

	2 × 380 ml
--	------------

heavy body 60019940

Cartridges	2 × 50 ml
Mixing Tips Turquoise	6 pcs

heavy body 60019941

Cartridges	2 × 75 ml
Mixing Tips Turquoise	8 pcs

heavy body System 360 Starter Kit 60019947

Cartridges	1 × 380 ml
Dynamic Mixing Tips	10 pcs
Fixation Ring	1 pcs

heavy body System 360 Refill 60019948

	2 × 380 ml
--	------------

PRESIDENT The Original Putties



putty 60019942

Base and Catalyst	2 × 300 ml
	2 spoons

putty super soft 60019944

Base and Catalyst	2 × 300 ml
	2 spoons

putty soft 60019943

Base and Catalyst	2 × 300 ml
	2 spoons

Universal Mixing Tip

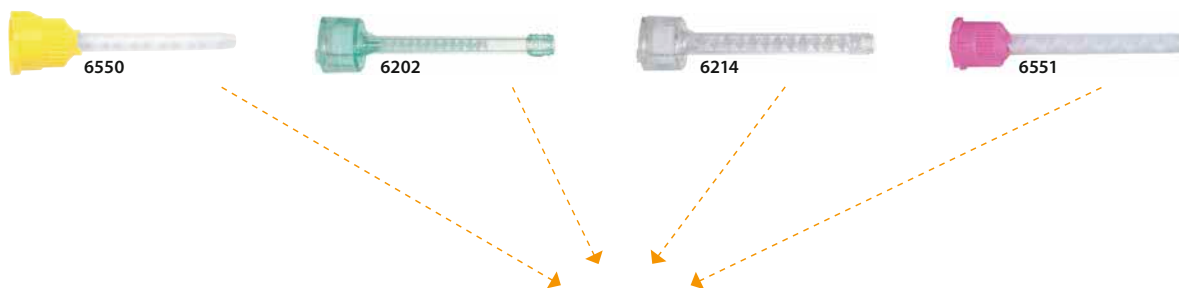
One for all, all for one!



One new UNIVERSAL MIXING TIP – Always the right choice

- For all 50 ml and 25 ml microSystem™ cartridges from COLTENE
- For all COLTENE light and regular body, bite registration and gingival mask materials
- All common oral and spreader tips of 50 ml and 25 ml cartridges can be used
- Simple and precise application due to reduced extrusion forces
- Practical, flexible and economical

The following mixing tips can be replaced with the new UNIVERSAL MIXING TIP.



Order Information

UNIVERSAL MIXING TIP
40 pcs.

REF 60019663

UNIVERSAL MIXING TIP
100 pcs.

REF 60019694

PRESIDENT Impression Tray and Accessories

A system of intersecting ribs and rails provides unprecedented rigidity in a plastic tray. The anatomic form relieves the fitting and ensures a perfect impression.



PRESIDENT Impression Tray (transparent)							
Size 1	upper jaw large	12 pcs	C6901	Size 6	lower jaw small	12 pcs	C6906
Size 2	lower jaw large	12 pcs	C6902	Size 7	quadrant UJ le./LJ ri.	12 pcs	C6907
Size 3	upper jaw medium	12 pcs	C6903	Size 8	quadrant UJ ri./LJ le.	12 pcs	C6908
Size 4	lower jaw medium	12 pcs	C6904	Size 9	anterior UJ/LJ	12 pcs	C6909
Size 5	Upper jaw small	12 pcs	C6905				

PRESIDENT Impression Tray autoclavable (blue)							
Size 1	upper jaw large AC	12 pcs	C6950	Size 6	lower jaw small AC	12 pcs	C6955
Size 2	lower jaw large AC	12 pcs	C6951	Size 7	quadrant UJ le./LJ ri. AC	12 pcs	C6956
Size 3	upper jaw medium AC	12 pcs	C6952	Size 8	quadrant UJ ri./LJ le. AC	12 pcs	C6957
Size 4	lower jaw medium AC	12 pcs	C6953	Size 9	anterior UJ/LJ AC	12 pcs	C6958
Size 5	upper jaw small AC	12 pcs	C6954				

Coltopress		4422
Squeezing aid for tubes. Coltopress empties tubes without waste.		

Impression Syringes		4426
Impression syringes incl. 15 tips	3 pcs	

		4428
Refill package tips	50 pcs	

Adhesive		4410
Bottle	1 x 10 ml	

Adhesive AC		4405
Bottle, autoclavable	1 x 10 ml	

Mixing Pad		4412
	1 pc	

Mixing Pads		4414
	10 pcs	

Spatula		4415
	1 pc	

Cutting Knife		4420
Universal	1 pc	

System 50/75 Accessories		
Dispenser 50/75 ml	1 pc	6900
Universal Mixing Tips	40 pcs	60019663
Universal Mixing Tips	100 pcs	60019694
Mixing Tips Turquoise	40 pcs	6552
Oral Tips Yellow	100 pcs	6555
Spreader Tips	100 pcs	6223
Plunger	1 pc	6985

microSystem Accessories		
microSystem Dispenser MKII	1 pc	6270
Oral Tips	100 pcs	6210
Spreader Tips	100 pcs	6223

SYMPRESS II dynamic mixing machine (EU)		6001147
---	--	---------

SYMPRESS II dynamic mixing machine (UK)		6001150
---	--	---------

Impression

C-Silicone

Prosthetics

Speedex®

Speedex is a premium C-Silicone in A-quality. Speedex has elastic recoverability and reproduction, which is otherwise only achieved by A-Silicones. As a result of the low shrinkage, impressions remain dimensionally stable and can be cast for up to 7 days without problems.

All consistencies of Speedex are mixed with a Universal Activator. Processing is flexible by means of underdosing or overdosing. After just two minutes in the mouth the impression is fully set.



Rapid

Rapid, the C-Silicone with colour change for outstanding mixing control. The special wash material Rapid Liner changes colour with successful mixing. Dependable mixing and the practical dispensing system simplify precise impression-taking.

Coltex® | Coltoflax®

With Coltex|Coltoflax began the success story of COLTENE silicones. A putty and three different consistencies, Coltex|Coltoflax offer an extensive product range. The right material for every indication and high quality are the factors that assure the right impression.



Brief description	Consistencies	
SPEEDEX®	WASH	TRAY
<p>C-Silicone in A-Quality: top quality of the C-Silicones High dimensional stability: up to 7 days Variable processing time: depending on dosage of the activator</p>	<p>light body medium body</p>	<p>putty</p>
RAPID	WASH	TRAY
<p>Basic product range: 2 × putty, 1 × wash Mixing control: colour change during mixing</p>	<p>Rapid Liner</p>	<p>Rapid Rapid soft</p>
COLTEX® COLTOFLAX®	WASH	TRAY
<p>First silicone from COLTENE: for every indication Extensive range: 1 × putty, 3 × different consistencies</p>	<p>Coltex extrafine Coltex fine Coltex medium</p>	<p>Coltoflax</p>

FAST IN A MOIST ENVIRONMENT



Speedex®

THE G-SILICONE WITH A-SILICONE QUALITIES.

Speedex offers physical properties that approximate to those of addition cured silicones – polyvinylsiloxanes. The Speedex system gives the advantage to work with only one activator for 3 consistencies.

Speedex offers:

- 7 DAYS DIMENSION STABILITY
- CONTROLLABLE WORKING TIMES
- SURFACE ACTIVE
- MOISTURE CONTROL
- OPTIMIZED PRECISION
- SUPERIOR DETAIL
- EXCELLENT FLOW BEHAVIOURS

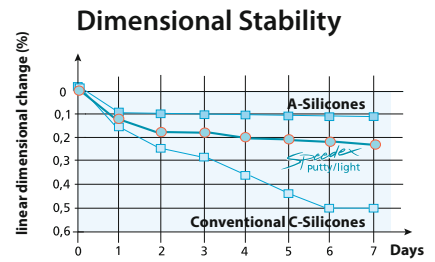
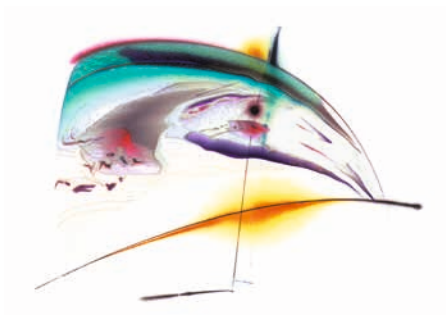
ADDITIONAL BENEFITS:

Haemostatic or anaesthetic substances can not influence the setting process. The handling with latex-gloves is also uncritical.



Speedex

Speedex medium has outstanding wettability and excellent flow characteristics. Saliva and blood are displaced by Speedex medium and have no negative side effects. With the variable setting time of Speedex medium the important mucosal movements, which are necessary for the full and partial denture technique, can be taken very precisely. A perfect impression is the key for an accurate fitting denture.



High dimensional stability:
models can be poured up to seven days after impression taking.

Speedex putty	4970
Single Package	1 x 910 ml
Speedex medium body	4986
Single Package	1 x 140 ml

Speedex light body	4980
Single Package	1 x 140 ml
Speedex Universal Activator	4990
Single Package	1 x 60 ml

Rapid

Simplicity and rationality are the trademarks of COLTENE Rapid. COLTENE Rapid provides the appropriate material for every application. And in addition, unparalleled aids ensuring excellent and reliable application of all system components. Optimal homogeneous control thanks to color change driving mixing.



Rapid	4515
Putty	1 × 900 ml
Rapid Activator	1 × 40 ml
Dosing Spoon	1 pc

Rapid Soft	4590
Putty	1 × 900 ml
Rapid Activator	1 × 40 ml
Dosing Spoon	1 pc

Rapid Activator	4530
Activator	1 × 40 ml

Rapid Liner Eco	4547
Liner	3 × 150 ml
Liner Activator	3 × 18 ml

Rapid Liner	4540
Liner	1 × 150 ml
Liner Activator	1 × 18 ml
Dosing Syringe	2 pcs
Applicator	1 pc
Mixing Rod	1 pc

Rapid Liner Activator	4550
Liner Activator	1 × 18 ml

Rapid Liner without applicator	4541
Liner	1 × 150 ml
Liner Activator	1 × 18 ml
Dosing Syringe	2 pcs

Coltex | Coltoflax



Coltex | Coltoflax offers you one putty material and 3 different materials in tubes. That means: you are completely free to choose the impression technique that suits you best. Easy handling characteristics, excellent physical properties and consistent quality are the features that guarantee successful impression results with Coltex | Coltoflax.

Coltoflax Base und Activator	4015	Coltoflax Activator Paste	4046
Single Package	1 × 950 ml	Coltoflax mix	1 × 40 ml
Coltex extrafine	4115	Coltex extrafine mix	4142
Single Package	1 × 160 ml	Coltex extrafine mix	1 × 20 ml
Coltex fine	4165	Coltex mix	4392
Single Package	1 × 165 ml	Coltex mix	1 × 40 ml
Coltex medium	4215		
Single Package	1 × 165 ml		

Pressure Spot Indicator



The polysiloxane-based material for the location of high spots in dentures.

PSI	4440	PSI CATALYST	4445
Catalyst	1 × 20 ml	Catalyst	1 × 20 ml
Base	1 × 55 ml		

Accessories see page 31

Speedex



Speedex Universal Activator	4990
Single Package	1 × 60 ml

Rapid



Rapid Activator	4530
Activator	1 × 40 ml

Rapid Liner Activator	4550
Liner Activator	1 × 18 ml

Rapid Liner Eco	4547
Liner	3 × 18 ml

Coltex | Coltoflax



Coltex mix	4392
Coltex mix	1 × 40 ml

Coltex extrafine mix	4142
Coltex extrafine mix	1 × 20 ml

Coltoflax Activator Paste	4046
Coltoflax mix	1 × 40 ml

PSI CATALYST



PSI CATALYST	4445
Catalyst	1 × 20 ml

Wax

Modelmaking

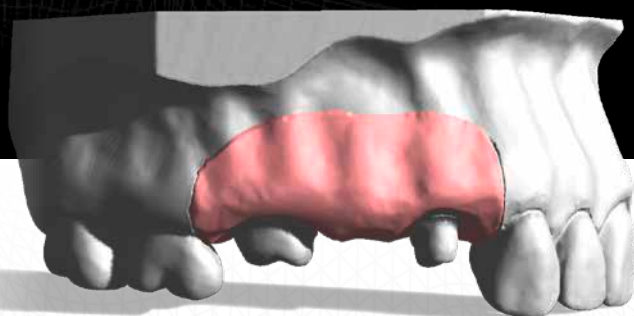
Gingiva Reproduction

Lab silicones

Laboratory / Practice



SCANNABLE GINGIVA MASK



GI-MASK® 3D

Digitise & Visualise

The scannable GI-MASK 3D allows digitising reproduced gingiva profiles in the preparation area without scan spray.

- › Scannable without surface treatment
- › Excellent flowability
- › Extremely high elasticity and tear strength

GI-MASK 3D



GI-Mask 3D Starter Kit	60022250
GI-MASK 3D cartridges	2 × 50 ml
GI-MASK 3D Universal Separator	1 × 50 ml
Universal Mixing Tip	12 pcs
Oral Tips Yellow	12 pcs
Trimmer for Silicones	1 pc

GI-Mask 3D Refill	60022251
GI-MASK 3D cartridges	2 × 50 ml
Universal Mixing Tip	12 pcs
Oral Tips Yellow	12 pcs

GI-MASK AUTOMIX New Formula



GI-MASK AUTOMIX New Formula provides accurate reproduction of soft tissue structure. The A-Silicone based gingival mask provides all information for implant supra-structures and frameworks. The aesthetic colouring of the gingival mask supports you to imagine the clinical situation.

Starter Kit	8060
GI-MASK New Formula cartridges	2 × 50 ml
GI-MASK Universal Separator	1 × 50 ml
Universal Mixing Tip	12 pcs
Oral Tips Yellow	12 pcs
Trimmer for Silicones	1 pc

Refill	8065
GI-MASK New Formula cartridges	2 × 50 ml
Universal Mixing Tip	12 pcs
Oral Tips Yellow	12 pcs

Accessories		
Universal Mixing Tip	40 pcs	60019663
Oral Tips Yellow	100 pcs	6555
Dispenser 50 ml/75 ml	1 pc	6900
Trimmer for Silicones	1 pc	8075

Separator	8000
GI-MASK Universal Separator	1 × 50 ml

GI-MASK



The GI-MASK is the C-Silicone-based gingival mask, for precise reproduction of gingival contours around the margins, it maintains its accuracy for days and right up to the moment until the restoration is finished.

Starter Kit	8030
GI-MASK Base	1 × 150 ml
GI-MASK Activator	1 × 18 ml
GI-MASK Universal Separator	1 × 50 ml
Mixing Tips	3 pcs
Mixing and application accessories	

Refill	8037
Base	1 × 150 ml
Activator	1 × 18 ml

Separator	8000
GI-MASK Universal Separator	1 × 50 ml

Activator	8036
GI-MASK Activator	1 × 18 ml

Lab-Putty



Lab-Putty is the outstanding polysiloxane laboratory modelling product material with 62 – 67 Shore A for model repairs, isolation and denture heat protection, keys and block outs and matrixes for formation of general occlusion and functional patterns.

Lab-Putty 1.35 kg	8805
Lab-Putty Base	1 × 900 ml
Lab-Putty Activator	1 × 40 ml
Dosing spoon	1 pc

Lab-Putty 7.5 kg	8815
Lab-Putty Base	1 × 5000 ml
Dosing spoon	5 pcs

Lab-Putty Activator	8840
Activator	1 × 40 ml

Lab-Putty hard



A smooth acrylic surface is guaranteed with the use of Lab Putty hard for relining, keys and repair models. Separate isolation is eliminated. Its high heat-resistance (300° C) and perfect dimensional stability makes it suitable for soldering models (90 Shore A).

Lab-Putty hard 1.8 kg	8882
Lab-Putty hard Base	1 × 900 ml
Activator	1 × 40 ml
Dosing spoon	1 pc

Lab-Putty hard 5 kg	8880
Lab-Putty hard Base	1 × 2600 ml
Dosing spoon	5 pcs

Lab-Putty Activator	8840
Activator	1 × 40 ml



Pindex

Uncompromising model and die precision which assures parallel channels for quick, easy, and reliable pin placement. The laser drilling machine offers more accurate drill positioning for better die registration and the visible beam reduces eye fatigue. The focus-free laser outlasts conventional bulbs and manual drilling to pre-set depth is possible.

HYGENIC Waxes

Large portfolio of different types of waxes for variable indications. Dependent on shape, size and color HYGENIC waxes perfectly fit for every situation and support the workflow.



ACCU-TRAC

The ACCU-TRAC system makes the fabrication of precision models and dies easier. It creates a precise base for your prosthodontic work. The model and base are poured as one, eliminating the additional work when using pins and sleeves. Time and material can be saved without sacrificing precision.

HYGENIC u-shaped occlusal rim wax



Recessed base aids adaption to base plate. Can be reshaped at room temperature to fit individual arch.

HYGENIC u-shaped occlusal rim wax		
Standard Package	21 pcs	H04030
Laboratory Package	100 pcs	H00822

HYGENIC bite-wafers



This bite-mask contains a thin aluminium foil within two wax layers. Laminated, blue.

HYGENIC bite-wafers		
Double	24 pcs	H00825

U-shaped and designed for a fast precise retain of the situation.

HYGENIC bite-wafers		
Yellow, soft	50 pcs	H00839
Green, hard	50 pcs	H03365

HYGENIC medium-soft no. 3 pink wax



Easily softened and cooled to minimize shrinkage. Soft modeling.

HYGENIC medium-soft no. 3 pink wax	
450 g	H00806
2.25 kg	H00812

HYGENIC red wax

This wax shows the same consistency as the medium-soft no. 3 pink wax.

HYGENIC red wax	
450 g	H00805
2.25 kg	H00811

HYGENIC extra tough wax



Durable, all-purpose wax that is a carefully prepared blend of exclusive waxes. Tough, pliable and sufficiently tacky to hold teeth well. Takes polish and boils out.

HYGENIC extra tough wax	
450 g	H00803
2.25 kg	H00809

HYGENIC yellow bite wax



Economical alternative to Beeswax with many of the same characteristics.

HYGENIC yellow bite wax	
450 g	H00807
2.25 kg	H00813

HYGENIC square wax ropes



Sticky, soft and narrow wax ropes.

HYGENIC square wax ropes		
4.8 mm ² × 279 mm Red	44 pcs	H00819
4.8 mm ² × 279 mm White	44 pcs	H00820

HYGENIC round wax strips



Shaped in round strips, used for preserving the periphery roll and extending and building up impression trays and post-damming.

HYGENIC round wax strips		
4.8 mm ² × 279 mm Red	80 pcs	H00817
4.8 mm ² × 279 mm White	80 pcs	H00818

HYGENIC wax sticks



Readily formed without heating, sticks are softer and tackier than „Round Wax Strips“ to minimize tissue displacement.

HYGENIC wax sticks		
Scented	48 pcs	H00826

HYGENIC boxing wax



Designed for boxing impressions, withstands extreme heat given off by dental stone during setting.

HYGENIC Boxing wax, regular		HYGENIC boxing waxes, extra fine	
1.6 mm × 38.4 mm × 305 mm 450 g	H00815	1 mm × 38.4 mm × 305 mm 450 g	H00816
1.6 mm × 38.4 mm × 305 mm 2.25 kg	H00837	1 mm × 38.4 mm × 305 mm 2.25 kg	H00838

HYGENIC orthodontic tray wax



Sticky, soft and narrow wax ropes.

HYGENIC Orthodontic Tray Wax Sticks		
White	48 pcs	H00827

Pindex System



The Pindex System is considered to be the «benchmark» used in model making. It provides a simple way to fabricate precise parallel drill channels.

Pindex Laser System		
Manual drilling, synthetic case, complete with accessories:		
Hand drill	1 pc	
Set of flexible socketformer	1 pc	
Tools for drill changing	2 pcs	
Socket wrench	1 pc	
Pin introduction set	1 pc	

Continental Europe	P113L CE
United Kingdom	P113L UK

Pindex Special Pins



Pin Long (20 mm) with Split Sleeve		
Bulk Package	1000 pcs	PX114S

Sleeve for self-articulating Pin		
Bulk Package	1000 pcs	PX145S

Pin Medium (16 mm) with Split Sleeve		
Bulk Package	1000 pcs	PX112S

Self-articulating Pin with Sleeve		
Bulk Package	100 pcs	PX145
Bulk Package	1000 pcs	PX144

Pin Short (10 mm) with Synthetic Sleeve		
Bulk Package	1000 pcs	PX115

Pindex Accessories



Accessories		
Carbide drill	3 pcs	PX119
Reamer	1 pc	PX120
Bulbs	10 pcs	PX124
Laser Retrofil Kit (Mark II)	1 pc	PX125

Flexible Rubber Base Molds		
Whole mandible, right, left quadrants	3 pcs	PX146

Flexible Rubber Base Molds		
Whole mandible	1 pc	PX147

Flexible Rubber Base Molds		
Right, left quadrants	2 pcs	PX148

Pindex Handsaw System



Pindex Handsaw System		
Complete Range		PX200
Pindex Handsaw	1 pc	
Sawblades 0.18 mm	12 pcs	
Sawblades 0.25 mm	12 pcs	

Sawblades 0.18 mm		
Refill Package	12 pcs	PX201
Bulk Package	100 pcs	PX301

Sawblades 0.25 mm		
Refill Package	12 pcs	PX202
Bulk Package	100 pcs	PX302

ACCU-TRAC Model System

ACCU-TRAC achieves the perfect basis for dental technology. In just a few working steps, you dispose of a highprecision handsaw. The use of pins and sleeves is superfluous, because the dental alignment and model socket with ACCU-TRAC is cast in one step.



Introductory Package		
Acrylic glass frame, brown	6 pcs	AT6
Basic Plates, white	6 pcs	
Articulator Plates for magnet	25 pcs	
Articulation-Spacer, green	6 pcs	
Recall Cards	25 pcs	
Name Tags	25 pcs	

Accessories		
Articulator Plates for magnet	25 pcs	ATK25
Recall Cards	25 pcs	
Name Tags	25 pcs	
Articulator Plates for magnet	300 pcs	ATK300
Recall Cards	300 pcs	
Name Tags	300 pcs	

Locking Arms	20 pcs	ATA20
Acrylic glass Frame, brown	12 pcs	ATT12
Basic Plates, white	12 pcs	ATE12
Articulation-Spacer, green	20 pcs	ATS20

Refill Package		
Acrylic glass frame, brown	12 pcs	ATR12
Articulator Plates, for magnet	50 pcs	
Recall Cards	50 pcs	
Name Tags	50 pcs	

Transport System		
Transport- and Delivery Container	50 pcs	ATN50
Name Tags	50 pcs	
Acrylic-Retainer	50 pcs	

Economy Packaging		
Introductory	72 units	AT72
12 × AT6		
Refill Kit	144 units	ATR144
12 × ATR12		
Precision Die Trays	576 pcs	ATT576

HYGENIC Mixing Bowls



Plaster, stone, investments, and alginates will not stick to these self-cleaning mixing bowls or to the nylon spatulas (not recommended for acrylic mixes). More flexible than rubber bowls for more efficient mixing.

HYGENIC Flexibole® Mixing Bowls		
Small	150 CC	H00563
Medium	350 CC	H00564
Large	600 CC	H00565
Extra Large	850 CC	H00566
Jumbo	1700 CC	H00567

Spatula		
Made in one piece of	3 pcs	H06012
molded nylon (19 cm)		



NOTES



 Locations

CH Coltène/Whaledent AG
Feldwiesenstrasse 20
9450 Altstätten / Switzerland
T +41 71 757 53 00
F +41 71 757 53 01
info.ch@coltene.com

CN Coltène/Whaledent China Trading Co. Ltd.
Rm. 1103/1104, Bldg. B2, Wu Dong Plaza
#9 Chegongzhuang Street, West District
Beijing 100044 / P.R. China
T +86 10 6212 3251
F +86 10 6212 3252
info.cn@coltene.com

IT Coltène Italia S.r.l.
c/o Polo Tecnologico della Brianza
Via Alessandro Volta, 94 - Cond. Bianchi
20832 Desio (MB) / Italy
T +39 0362 62 67 32
F +39 0362 63 25 80
info.it@coltene.com

DE Coltène/Whaledent GmbH + Co. KG
Raiffeisenstraße 30
89129 Langenau / Germany
T +49 7345 805 0
F +49 7345 805 201
info.de@coltene.com

FR Coltène/Whaledent S.a.r.l.
Synergie Park
3 avenue Louis Néel
59260 Lezennes / France
T +33 320 64 64 00
F +33 320 64 64 03
info.fr@coltene.com

UK Coltène/Whaledent Ltd.
The President Suite
Kendal House, Burgess Hill
Victoria Way
West Sussex, RH15 9NF / UK
T +44 1444 235486
F +44 1444 870640
info.uk@coltene.com

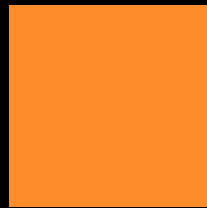
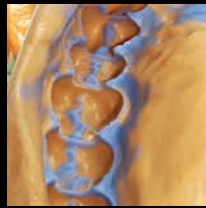
US Coltène/Whaledent Inc.
235 Ascot Parkway
Cuyahoga Falls, Ohio 44223 / USA
T +1 330 916 8800
F +1 330 916 7077
info.us@coltene.com

IN Coltène/Whaledent Private Ltd.
106/107, Hallmark, Vasant Oscar
L.B.S Marg, Mulund West
Mumbai 400080, Maharashtra / India
T +91 22 25923626
F +91 22 25623165
info.in@coltene.com

BR Vigodent SA Indústria e Comércio
Rua Pesqueira 26 Bonsucesso
Rio de Janeiro CEP 21041-150 / Brazil
T +5521 3865 5600
F +5521 2280 8411
sac@vigodent.com.br

ES Coltène Iberia S.L.U.
c/Doctor Fleming, 3 - Bajo A
28220 Majadahonda, Madrid / Spain
T +34 91 63 86 492
F +34 91 63 86 279
info.ib@coltene.com

JP Coltène Japan LLC
2-2-28 2nd Floor, Nishikicho
190-0022 Tachikawa Tokyo / Japan
T +81 42 595 6945
F +81 42 595 6946
info.jp@coltene.com



© COLTENE – www.coltene.com



 COLTENE