

PROSTHETICS

DENITAI
CATALOG

THE FIRST IMPRESSION COUNTS

COLTENE primarily associates prosthetics with precision impression materials, which has been one of the company's core expertise since its foundation. With Coltex/Coltoflax, an extensive impression programme was developed back in the early 1970s, which is still valued by renowned prosthodontists to this day. The launch of PRESIDENT the first A-Silicone on the market in 1975 is viewed as a milestone in the development of high precision dental impression materials.

Today addition cross-linking impression materials are scientifically recognised as the gold standard and are indispensable in the dental practice. The development of practical cartridge systems which significantly simplified bubble-free mixing of impression materials also contributed to their success.

Thanks to the use of 'supertensides' with the introduction of the premium A-Silicone AFFINIS in 2001, impression-taking in the moist environment improved enormously. The outstanding surface affinity and optimised flow properties of AFFINIS ensure perfect impressions, even under the most difficult conditions.

For over two decades, many dentists swear by the SPEEDEX brand. Around 400 mil. impressions have been taken over

this period that underline the trust placed in COLTENE's competence and expertise. The worldwide success of SPEEDEX C-Silicones lies in the outstanding mix of economy and product properties similar to those of A-Silicone.

Impression materials from COLTENE belong to today's globally leading products. Special formulas allow precise impressions to be fabricated quickly and easily. Thanks to the wide product range, the user can utilise the right material for every indication.



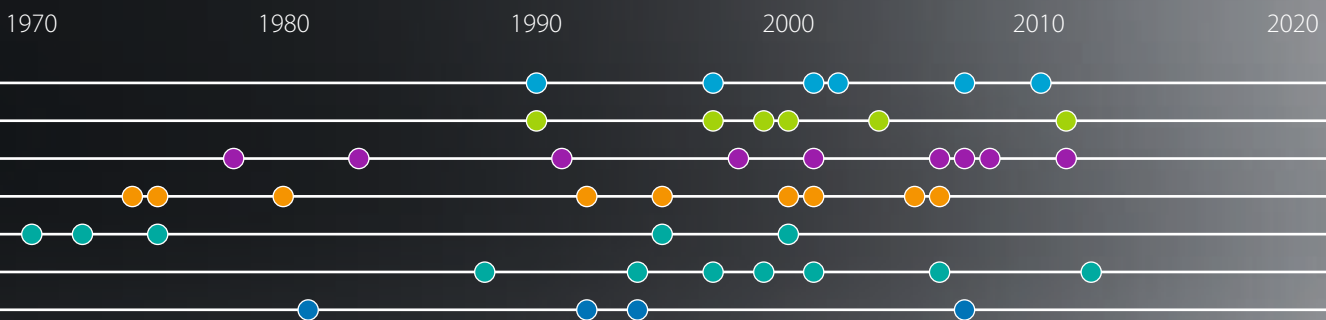
COMPANY FOUNDATIONS

- 1910 ROEKO GmbH & Co.KG, DE
- 1953 Vigodent, BR
- 1956 Whaledent Inc., US
- 1963 COLTENE AG, CH



MERGERS

- 1990 Whaledent Inc., US
- 1997 HYGENIC Dental, US
- 2001 DIATECH, CH
- 2002 ROEKO, DE
- 2007 CEI, US
- 2010 Vigodent, BR



TREATMENT AIDS

- 1955 Luna
- 1964 Parotisroll
- 1970 Cotton pellets
- 1972 Surgitip
- 1975 Gelatamp
- 1995 Dental Dam Silicone non latex
- 2000 Flexi Dam non latex

INFECTION CONTROL

- 1988 BioSonic UC 1 Cleaner
- 1994 Steri-Quick
- 1997 Protecta Quick non latex
- 1999 Simplex-Plus Maxi
- 2001 BioSonic US 100 Scaler
- 2006 BioSonic UC 125
- 2012 Protecta Active Carbon

ROTARY INSTRUMENTS

- 1981 ML Diamonds
- 1992 Carbides
- 1994 Top Spin
- 2007 Speedster

**INDICATION
PRODUCT TYPE**

**FIELD OF APPLICATION
PROPERTIES**

PRODUCT NAME

RETRACTION

PREPARATION WITH CORDS

Retraction Cords	Air-jet textured	ROEKO Comprecord	10
	Braided / twisted, impregnated / not impregnated	ROEKO Retracto	
	Twisted with malleable, fine wire-core, impregnated / not impregnated	ROEKO Stay-put	11
Accessories	For placement of retraction cords	Retraction Cord Packer	11

PREPARATION WITH SILICONE

Silicone foam	Expanding and addition-curing silicone foam, time-saving, non-traumatic	Magic FoamCord	12
Accessories	Standard compression caps, to stop bleeding and to dry tooth stumps	ROEKO Comprecap	13
	Anatomically shaped compression caps, to stop bleeding and to dry tooth stumps	ROEKO Comprecap Anatomic	13

IMPREGNATION

Pretreatment of gingiva	To pretreat the gingiva and impregnation of retraction cords, with 10% aluminium chloride hexahydrate	Gingiva Liquid	13
--------------------------------	---	----------------	----

BITE REGISTRATION

A-Silicone	Mousse-like, smooth consistency with very short, patient-friendly intraoral setting time, good milling and cutting properties	JET BLUE BITE fast JET BLUE BITE superfast	16
	Classical bite registration material, ideal stability and simple handling, good milling and cutting properties	Jet Bite	17
	Accessories for microSystem and System 50	JET BLUE BITE, Jet Bite	17

IMPRESSION

A-SILICONE

		2S	1S	MP	FUI	FI		
Wash material	Premium A-Silicone, low and medium viscosity, hydrocolloid-like property, innovative surface affinity with very low contact angle, autoclavable	●	●	○	●	○	AFFINIS light body / fast AFFINIS regular body / fast	19
	Latest generation with especially good flow properties, metallic colour (gold and silver) for improved readability, autoclavable	●	●	○	●	○	AFFINIS PRECIOUS light body AFFINIS PRECIOUS regular body	20
	Classical A-Silicone, low and medium viscosity, surface-activated, from the tube or cartridge	●	○	○	●	○	PRESIDENT light body PRESIDENT regular body	23
Tray material	Premium putty from 380 ml cartridge, smooth consistency with high final hardness, autoclavable	●	●	○	○	○	AFFINIS putty	22
	Smooth consistency from the pot with medium final hardness, autoclavable	●	●	○	○	○	AFFINIS putty soft / fast	22

**INDICATION
PRODUCT TYPE**

**FIELD OF APPLICATION
PROPERTIES**

PRODUCT NAME

2S 1S MP FUI FI

Tray material	Especially smooth consistency from the pot with medium final hardness, autoclavable	● ● ○ ○ ○	AFFINIS putty super soft	22
	Viscous consistency from the cartridge with medium final hardness, innovative surface affinity, autoclavable	○ ● ○ ● ●	AFFINIS heavy body/fast	21
	Classical putty from the pot, smooth consistency with high final hardness	● ● ○ ○ ○	PRESIDENT putty	24
	Smooth consistency from the pot with medium final hardness	● ● ○ ○ ○	PRESIDENT putty soft/fast	24
	Viscous consistency from the cartridge with medium final hardness	○ ● ○ ● ●	PRESIDENT heavy body	24
Monophase material	Medium viscosity consistency with low final hardness, specifically for single phase impressions	● ● ● ● ●	AFFINIS MonoBody	21

C-SILICONE

Wash material	Premium C-Silicone with A-Silicone quality, low to medium viscosity consistency, 7-day dimensional stability, variable setting time by dosing the activator, surface-active	● ● ○ ● ○	SPEEDEX light SPEEDEX medium	28
	Low viscosity wash material, outstanding mixing control with colour change during mixing, special application aid	● ● ○ ● ○	Rapid Liner	29
	Classical C-Silicone family with four different consistencies for every indication	● ● ○ ● ○	Coltex extrafine, Coltex fine Coltex medium	30
Tray material	Premium C-Silicone putty from the pot	● ● ○ ○ ○	SPEEDEX putty	28
	Classical putty in the system pack	● ● ○ ○ ○	Rapid putty	29
	Classical putty in the system pack, smooth consistency with low final hardness	● ● ○ ○ ○	Rapid putty soft	29
	Classical putty with high final hardness	● ● ○ ○ ○	Coltoflax putty	30
	Classical putty	● ● ○ ○ ○	Coltex compact	30
Activator		SPEEDEX, Rapid, Rapid Liner, Coltex mix, Coltoflax mix, Coltex extrafine mix, PSI Cat.	31	
Accessories		A-Silicone, C-Silicone	25	

IMPRESSION TECHNIQUE

- 2S Two-step impression
- 1S One-step impression
- MP Monophase impression
- FUI Functional impression
- FI Fixation impression

PRESSURE-SPOT IDENTIFICATION

C-SILICONE

Ideal material based on polysiloxane for simple and reliable identification of pressure spots	Pressure Spot Indicator – PSI	30
Activator	PSI CATALYST	30

**INDICATION
PRODUCT TYPE**

**FIELD OF APPLICATION
PROPERTIES**

PRODUCT NAME

LABORATORY

GINGIVA REPRODUCTION

A-Silicone

A-Silicone gingival mask from the Automix cartridge for precise registration of the gingival contours, natural and aesthetic colouring

GI-MASK Automix New Formula

34

C-Silicone

C-Silicone, gingival mask, Handmix

GI-MASK

LABORATORY SILICONES

Silicone putty

Silicone putty with high final hardness, for keys, stamps and block-outs

Lab-Putty

35

Silicone putty with a very high final hardness of approx. 90 Shore A, high heat resistance (300 °), for fabricating soldering models

Lab-Putty hard

35

WAXES

**Modelling and plate waxes
Bite rims and templates**

Modelling and plate waxes, bite rims and templates in horseshoe shape. For protecting the functional margin or expanding the impression tray and for model fabrication

HYGENIC waxes

37

Gingiva Retraction

Impregnation

Retraction Cords

Prosthetics

ROEKO Comprecord

Comprecord is an air texturized retraction cord with a stable structure and a great total volume which makes Comprecord highly absorbent. The cord has a pliable structure that allows Comprecord to adapt easily to the sulcus without fraying and shedding fibers.



Advantages of Comprecord:

- pliable structure
- outstanding absorbency
- easy to place in the sulcus
- does not fray and shed fibers
- color coded for easy distinction of sizes

Non impregnated, 225 cm		
0	x-fine	515 000
1	fine	515 001
2	medium	515 002
3	thick	515 003

ROEKO Retracto



Braided		
Impregnated with aluminium chloride hexahydrate, 225 cm		
1	fine	510 001
2	medium	510 002
3	thick	510 003

Non impregnated, 225 cm		
0	x-fine	511 000
1	fine	511 001
2	medium	511 002
3	thick	511 003

Twisted		
Impregnated with aluminium chloride hexahydrate, 225 cm		
1	fine	522 001
2	medium	522 002
3	thick	522 003

Non impregnated, 225 cm		
0	x-fine	523 000
1	fine	523 001
2	medium	523 002
3	thick	523 003

ROEKO Stay-put



Stay-put combines the advantages of a braided retraction cord with the adaptability of a fine metal filament. The pliable core is so effective that the cord is not only easy to place in the sulcus but it stays there.

Non impregnated, 183 cm	
0 x-fine	521 000
1 fine	521 001

2 medium	521 002
3 thick	521 003



Impregnation with aluminium chloride hexahydrate. Stay-put impregnated is colour coded for easy distinction of sizes and to contrast well with the gingiva. Impregnated with aluminium chloride hexahydrate, 183 cm.

impregnated, 183 cm	
0 x-fine	521 020
1 fine	521 021

2 medium	521 022
3 thick	521 023

ROEKO Retraction Cord Packer



Retraction Cord Packer	
Execution smooth	520 000
Execution serrated	520 001

Magic FoamCord



Magic FoamCord is the first expanding PVS material designed for easy and fast retraction of the sulcus without the potentially traumatic and time consuming packing of retraction cord.

Benefits

- Atraumatic method of temporary gingival retraction
- Easy and fast application directly to the sulcus without pressure or packing
- Comfortable to the patient
- No haemostatic chemicals to contaminate the impression site – no need for extensive rinsing
- Outstanding retraction for perfect impressions

2 min*: Foaming action complete; 5 min*: Material completely cured.
Total Expansion 160%



Magic FoamCord Intro Kit	6735
Cartridges	2 x 50 ml
Mixing Tips Yellow	30 pcs
Oral Tips Yellow	30 pcs
Comprecap anatomic	45 pcs

Magic FoamCord Refill	6737
Cartridges	2 x 50 ml

System 50 Accessories		
Mixing Tips Yellow	40 pcs	6550
Oral Tips Yellow	100 pcs	6555

ROEKO Comprecap

ROEKO Comprecap compression caps stop bleeding naturally – by compression and control moisture. The use is simple and supports impression preparation regardless of the retraction technique.



Set	530 000
Content 1/3/5	150 pcs

Single Sizes		
1	120 pcs	530 008
1	600 pcs	531 008
3	120 pcs	530 010
3	600 pcs	531 010
5	60 pcs	530 014
5	400 pcs	531 014



Comprecap anatomic

Are anatomically formed compression caps with semicircled shaped spaces on two opposite sides and can therefore be easily placed on adjacent teeth.

Set	531 299
Content 1/3/5	120 Stk.

Single Sizes		
1	120 pcs	531 201
3	120 pcs	531 203
5	60 pcs	531 205

ROEKO Gingiva Liquid

An astringent, styptic solution with 10% aluminium chloride hexahydrate. No cardiovascular problems as it does not contain Epinephrine. For treatment of the gingiva before taking an impression and to impregnate retraction cords.



ROEKO Gingiva Liquid	524 000
Content	1 × 10 ml

Impression
A-Silicone

Prosthetics



AFFINIS®

The innovative surface affinity and optimised flow properties of AFFINIS ensure perfect impressions. The premium A-Silicone excels by virtue of fast wetting of the tooth and gingiva. Even under the most difficult moist conditions, AFFINIS flows outstandingly like a hydrocolloid into the deepest sulcus without applying pressure. Thanks to the self-contouring consistency, air voids are absent and bubbles or distortions can be virtually eliminated. The thixotropic property means that AFFINIS has adequate stability and does not drip from the tooth.

PRESIDENT®

PRESIDENT the first A-Silicone has impressed for decades with its superior quality as one of COLTENE's traditional products. PRESIDENT wash materials are stable, yet extremely free-flowing under pressure to capture all details cleanly. Impressions are precise, even under the most difficult conditions thanks to their high tear strength.



Brief description

AFFINIS®

Premium A-Silicone: top quality
Universal product range: putty, tray, 6 x wash
Dosage form in cartridges: 25 ml, 50 ml, 75 ml, 380 ml
Innovative consistencies: AFFINIS PRECIOUS
Optimal flow properties: top precision
Top dimensional stability: fitting accuracy
Automix: simple handling
Autoclavable: protection against infections
Smallest contact angle: best wettability

PRESIDENT®

Classical A-Silicone: continuously optimised
Two forms of mixing: Automix und Handmix
Top dimensional stability: high quality
Optimal flow properties: high precision
Dosage form in cartridges: 25 ml, 50 ml, 75 ml, 380 ml
Dosage form in tubes: Base and Activator each 53 ml

Consistencies

WASH

light body
 light body fast
 PRECIOUS light body
 regular body
 regular body fast
 PRECIOUS regular body

TRAY

MonoBody
 heavy body
 heavy body fast
 putty soft
 putty super soft
 putty soft fast
 putty System 360

WASH

light body
 regular body

TRAY

heavy body
 putty
 putty soft
 putty soft fast

JET BLUE BITE



Exceptional Handling with firm, accurate, fast set

JET BLUE BITE bite registration material flows with a smooth whipped-cream consistency exactly where you want it in a predictable quantity and ideal ribbon pattern. It offers a fast oral setting-time and sets rock hard for greater accuracy but is still flexible enough for easy trimming or cutting. The superior handling characteristics are the key for a perfect occlusal fit on the first try.

- Stays exactly where you want it
- No resistance to closure, no rebound!
- Rock hard for accuracy, yet flexible for easy trimming
- Pick your ideal speed:

Fast 30 s working time
40 s oral setting time

Superfast 20 s working time
30 s oral setting time

JET BLUE BITE fast



JET BLUE BITE fast 50 ml Single Pack	6491
Cartridge	1 × 50 ml
Mixing Tips Pink	6 pcs
Spreader Tips	6 pcs

JET BLUE BITE fast 50 ml Refill	6495
Cartridge	4 × 50 ml
Mixing Tips Pink	12 pcs
Spreader Tips	12 pcs

JET BLUE BITE superfast



JET BLUE BITE superfast 50 ml Single Pack	6493
Cartridge	1 × 50 ml
Mixing Tips Pink	6 pcs
Spreader Tips	6 pcs

JET BLUE BITE superfast 50 ml Refill	6497
Cartridge	4 × 50 ml
Mixing Tips Pink	12 pcs
Spreader Tips	12 pcs

Jet Bite



Easy handling and ideal stability facilitate the bite registration. The dental technician appreciates how well the material can be formed and trimmed.

Jet Bite microSystem	6440
Cartridges	4 × 25 ml
Mixing Tips Clear	20 pcs
Spreader Tips	20 pcs

Jet Bite microSystem	6450
Refill package cartridges	20 × 25 ml

Jet Bite 50 ml	6400
Cartridges	2 × 50 ml
Mixing Tips Pink	12 pcs
Spreader Tips	12 pcs

Jet Bite 50 ml	6410
Refill package cartridges	20 × 50 ml

Jet Bite Accessories



microSystem		
microSystem Dispenser MK II	1 pc	6270
Mixing Tips Clear	40 pcs	6214
Mixing Tips Clear	100 pcs	6215
Spreader Tips	100 pcs	6223

50 ml System		
Dispenser 50/75 ml	1 pc	6900
Mixing Tips Pink	40 pcs	6551
Spreader Tips	100 pcs	6223



Affinity on moist tooth structure

AFFINIS – a bench mark in impression technology

AFFINIS, an A-Silicone, differs in three characteristic features from other surface activated impression materials:

Innovative surface affinity

The differentiating element of AFFINIS is a fast and innovative affinity of mixed material to moist tooth structure and tissue (gingiva).

Optimized flow

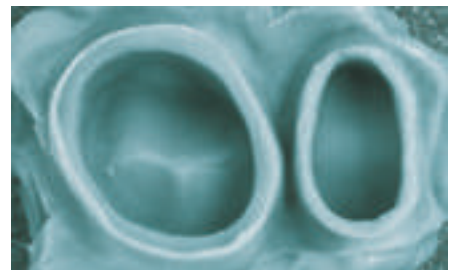
AFFINIS however, based on its surpassing combination of additives which are capable of breaking material structures, displays a very low barrier to flow (self-contouring consistency) At the same time, the mixed material is optimal thixotropic not to drip off the preparation.

Better models

AFFINIS, due to its synergistic and extremely active surfactant system, displays a fast and outstanding wetting by water of the set impression. When pouring the gypsum, the dental technician will appreciate these properties.

First Ever Autoclavable Impressions

All AFFINIS and AFFINIS PRECIOUS impressions are now autoclavable at 134°C without the loss of its well-known and appreciated AFFINIS physical properties. The new autoclavable AFFINIS impression material with a heat-resistant impression tray and special adhesive provides an integrated system for completely new possibilities in prevention. AFFINIS impressions – not only clean, but also sterile.



A no void AFFINIS impression as seen by the dentist

AFFINIS light body



AFFINIS light body microSystem	6500
Cartridges	4 × 25 ml
Mixing Tips Green	20 pcs
Oral Tips	20 pcs

AFFINIS light body 50 ml	6501
Cartridges	2 × 50 ml
Mixing Tips Yellow	12 pcs

AFFINIS light body microSystem	6575
Refill package cartridges	20 × 25 ml

AFFINIS light body 50 ml	6580
Refill package cartridges	20 × 50 ml

AFFINIS fast light body



AFFINIS fast light body microSystem	6600
Cartridges	4 × 25 ml
Mixing Tips Green	20 pcs
Oral Tips	20 pcs

AFFINIS fast light body 50 ml	6601
Cartridges	2 × 50 ml
Mixing Tips Yellow	12 pcs

AFFINIS fast light body microSystem	6675
Refill package cartridges	20 × 25 ml

AFFINIS fast light body 50 ml	6680
Refill package cartridges	20 × 50 ml

AFFINIS regular body



AFFINIS regular body microSystem	6510
Cartridges	4 × 25 ml
Mixing Tips Clear	20 pcs
Oral Tips	20 pcs

AFFINIS regular body 50 ml	6511
Cartridges	2 × 50 ml
Mixing Tips Yellow	12 pcs

AFFINIS regular body microSystem	6577
Refill package cartridges	20 × 25 ml

AFFINIS regular body 50 ml	6582
Refill package cartridges	20 × 50 ml

AFFINIS fast regular body



AFFINIS fast regular body microSystem	6610
Cartridges	4 × 25 ml
Mixing Tips Clear	20 pcs
Oral Tips	20 pcs

AFFINIS fast regular body 50 ml	6611
Cartridges	2 × 50 ml
Mixing Tips Yellow	12 pcs

AFFINIS fast regular body microSystem	6677
Refill package cartridges	20 × 25 ml

AFFINIS fast regular body 50 ml	6682
Refill package cartridges	20 × 50 ml

AFFINIS PRECIOUS

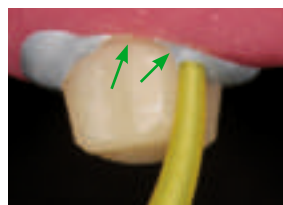


Superior flow properties where it counts – In the mouth...

AFFINIS PRECIOUS polyvinylsiloxane (PVS) wash materials have a contact angle of only 10°. Its superior flow properties allow the impression material to easily capture all critical surface detail of the preparations in a wet environment.

...and in the lab

AFFINIS PRECIOUS was developed to produce accurate results in the mouth and in the lab. The wettability allows the wet gypsum to flow more easily into the impression, producing more accurate stone models. An accurate model is the key for the lab technician to create proper fitting restorations.



AFFINIS PRECIOUS flows directly into the sulcus preventing air entrapments.



Thixotropic properties prevent slumping and dripping.



AFFINIS PRECIOUS wash materials produce accurate, void free impressions.

**AFFINIS PRECIOUS
light body / regular body**



AFFINIS PRECIOUS light body 50 ml	6775
Cartridges	2 × 50 ml
Mixing Tips Yellow	12 pcs

AFFINIS PRECIOUS regular body 50 ml	6776
Cartridges	2 × 50 ml
Mixing Tips Yellow	12 pcs

AFFINIS PRECIOUS light body mS 25 ml	6779
Cartridges microSystem	4 × 25 ml
Mixing Tips Green	20 pcs
Oral Tips	20 pcs

AFFINIS PRECIOUS regular body mS 25 ml	6780
Cartridges microSystem	4 × 25 ml
Mixing Tips Clear	20 pcs
Oral Tips	20 pcs

AFFINIS MonoBody



AFFINIS MonoBody is tissue friendly and neutral in taste without side effects or patient discomfort. After a short oral setting time of 3.30 min the AFFINIS impression can be easily removed without residue or distortion. The impression is desinfectable without dimensional changes. The high elastic recovery of 99.75 % and dimensional change of just 0.2% are the essential characteristics for accurate restorations.

AFFINIS MonoBody 75 ml	6547
Cartridges	2 × 75 ml
Mixing Tips Turquoise	8 pcs

AFFINIS MonoBody 75 ml	6587
Refill package cartridges	20 × 75 ml

AFFINIS System 360 MonoBody Starter Kit	6480
Base und Catalyst	1 × 380 ml
Fixation Ring	1 pc
Dynamic Mixing Tips Yellow	10 pcs

AFFINIS System 360 MonoBody	6482
Refill package Base und Catalyst	2 × 380 ml
Fixation Ring	1 pc

AFFINIS heavy body



With its surface affinity technologie and its ideal thixotropic characteristics AFFINIS heavy body builds up an ideal intraoral pressure, that which drives material easily into all critical areas.

AFFINIS heavy body 75 ml	6520
Single pack Cartridges	2 × 75 ml
Mixing Tips Turquoise	8 pcs

AFFINIS heavy body 75 ml	6585
Refill package cartridges	20 × 75 ml

AFFINIS heavy body 50 ml	6590
Single pack Cartridges	2 × 50 ml
Mixing Tips Turquoise	6 pcs

AFFINIS heavy body 50 ml	6595
Refill package cartridges	20 × 50 ml

AFFINIS System 360 heavy body Starter Kit	6485
Base und Catalyst	1 × 380 ml
Fixation Ring	1 pc
Dynamic Mixing Tips Yellow	10 pcs

AFFINIS System 360 heavy body	6487
Refill package Base und Catalyst	2 × 380 ml
Fixation Ring	1 pc

AFFINIS fast heavy body



AFFINIS fast heavy body 75 ml	6620
Cartridges	2 × 75 ml
Mixing Tips Turquoise	8 pcs

AFFINIS fast heavy body 75 ml	6685
Refill package cartridges	20 × 75 ml

AFFINIS fast heavy body 50 ml	6650
Single pack Cartridges	2 × 50 ml
Mixing Tips Turquoise	6 pcs

AFFINIS fast heavy body 50 ml	6652
Refill package cartridges	20 × 50 ml

AFFINIS System 360 putty



The new AFFINIS System 360 putty is truly kneadable, whose strong “firm body” is immediately noticeable once dispensed from the mixing unit with no signs of stickiness. The putty material can be manually-kneaded immediately in the hands without sticking to the gloves. This facilitates individual pre-forming of the tray material based on the clinical situation. The dentist is comforted with a reliable, automatically-mixed putty material for successful precision impressions.

AFFINIS System 360 putty Starter Kit		6471
Base und Catalyst	1 × 380 ml	
Fixation Ring	1 pc	
Dynamic Mixing Tips Yellow	10 pcs	

AFFINIS System 360 putty Single Pack		6472
Refill package Base and Catalyst	2 × 380 ml	
Fixation Ring	1 pc	

AFFINIS putty soft / fast



AFFINIS putty soft is a standard putty in the AFFINIS putty range. The compatible consistencies of the base and catalyst ensure for quick and easy mixing.

AFFINIS putty soft		6530
Base und Catalyst	2 × 300 ml	

AFFINIS fast putty soft		6531
Base und Catalyst	2 × 300 ml	

AFFINIS putty super soft



AFFINIS putty super soft is smooth, quick and easy to mix. With a viscosity similar to heavy body, formulated to flow and guide AFFINIS wash materials accurately to clinically important surfaces and with ideal mixing and oral setting times, the putty achieves perfect impressions without voids and margin distortions.

AFFINIS putty super soft		6535
Base und Catalyst	2 × 300 ml	



System 50/75 Accessories		
Dispenser 50/75 ml	1 pc	6900
Mixing Tips Yellow	40 pcs	6550
Mixing Tips Pink	40 pcs	6551
Mixing Tips Turquoise	40 pcs	6552
Oral Tips Yellow	100 pcs	6555
Spreader Tips	100 pcs	6223
Plunger, 75 ml	1 pcs	6985

microSystem Accessories		
microSystem Dispenser MK II	1 pc	6270
Mixing Tips Clear	40 pcs	6214
Mixing Tips Clear	100 pcs	6215
Mixing Tips Green	40 pcs	6202
Mixing Tips Green	100 pcs	6205
Oral Tips	100 pcs	6210
Spreader Tips	100 pcs	6223

System 360 Accessories		
Dynamic Mixing Tips Yellow	40 pcs	6162

AFFINIS fast putty soft		
Fixation Ring	1 pc	6163

PRESIDENT light body



PRESIDENT microSystem light body	6002
Cartridges	4 × 25 ml
Mixing Tips Green	20 pcs
Oral Tips	20 pcs

PRESIDENT light body	4626
Cartridges	2 × 50 ml
Mixing Tips Yellow	12 pcs

PRESIDENT microSystem light body	6005
Refill package cartridges	20 × 25 ml

PRESIDENT light body tube material	4667
Base und Catalyst	2 × 53 ml

PRESIDENT regular body



PRESIDENT microSystem regular body	6012
Cartridges	4 × 25 ml
Mixing Tips Clear	20 pcs
Oral Tips	20 pcs

PRESIDENT regular body	4627
Cartridges	2 × 50 ml
Mixing Tips Yellow	12 pcs

PRESIDENT microSystem regular body	6015
Refill package cartridges	20 × 25 ml

PRESIDENT regular body tube material	4717
Base und Catalyst	2 × 53 ml

PRESIDENT Putties



PRESIDENT putty	4617
Base und Catalyst	2 × 300 ml

PRESIDENT putty soft	4843
Base und Catalyst	2 × 300 ml

PRESIDENT fast putty soft	4632
Base und Catalyst	2 × 300 ml

PRESIDENT heavy body

PRESIDENT heavy body is surface-activated and thixotropic with fast pressure build up so that the wash material is easily driven into the critical areas.



PRESIDENT heavy body 75 ml	6712
Cartridges	2 × 75 ml
Mixing Tips Turquoise	8 pcs

PRESIDENT heavy body 75 ml	6715
Refill packages cartridges	20 × 75 ml

PRESIDENT System 360 heavy body Starter Kit	6100
Base und Catalyst	1 × 380 ml
Fixation Ring	1 pc
Dynamic Mixing Tips Yellow	10 pcs

PRESIDENT System 360 heavy body	6105
Base und Catalyst	2 × 380 ml
Fixation Ring	1 pc

PRESIDENT tube material



PRESIDENT heavy body tube material	4767
Base und Catalyst	2 × 53 ml

PRESIDENT light body tube material	4667
Base und Catalyst	2 × 53 ml

PRESIDENT regular body tube material	4717
Base und Catalyst	2 × 53 ml

PRESIDENT Impression Tray and Accessories

A patented system of intersecting ribs and rails provides unprecedented rigidity in a plastic tray. The anatomic form releases the fitting and ensures a perfect impression.

PRESIDENT Impression Tray (transparent)							
Size 1	upper jaw large	12 pcs	C6901	Size 6	lower jaw small	12 pcs	C6906
Size 2	lower jaw large	12 pcs	C6902	Size 7	quadrant UJ le./LJ ri.	12 pcs	C6907
Size 3	upper jaw medium	12 pcs	C6903	Size 8	quadrant UJ ri./LJ le.	12 pcs	C6908
Size 4	lower jaw medium	12 pcs	C6904	Size 9	anterior UJ/LJ	12 pcs	C6909
Size 5	Upper jaw small	12 pcs	C6905				

PRESIDENT Impression Tray autoclavable (blue)							
Size 1	upper jaw large AC	12 pcs	C6950	Size 6	lower jaw small AC	12 pcs	C6955
Size 2	lower jaw large AC	12 pcs	C6951	Size 7	quadrant UJ le./LJ ri. AC	12 pcs	C6956
Size 3	upper jaw medium AC	12 pcs	C6952	Size 8	quadrant UJ ri./LJ le. AC	12 pcs	C6957
Size 4	lower jaw medium AC	12 pcs	C6953	Size 9	anterior UJ/LJ AC	12 pcs	C6958
Size 5	upper jaw small AC	12 pcs	C6954				

Coltopress		4422
Squeezing aid for tubes. Coltopress empties tubes without waste.		

Impression Syringes		4426			4428
Impression syringes incl. 15 tips		3 pcs	Refill package tips		50 pcs

Adhesive		4410	Adhesive AC		4405
Bottle		1 x 10 ml	Bottle, autoclavable		1 x 10 ml

Mixing Pad		4412	Mixing Pads		4414
		1 pc			10 pcs

Spatula		4415	Cutting Knife		4420
		1 pc	Universal		1 pc

System 50/75 Accessories			microSystem Accessories		
Dispenser 50/75 ml	1 pc	6900	microSystem Dispenser MKII	1 pc	6270
Mixing Tips Yellow	40 pcs	6550	Mixing Tips Clear	40 pcs	6214
Mixing Tips Pink	40 pcs	6551	Mixing Tips Clear	100 pcs	6215
Mixing Tips Turquoise	40 pcs	6552	Mixing Tips Green	40 pcs	6202
Oral Tips Yellow	100 pcs	6555	Mixing Tips Green	100 pcs	6205
Spreader Tips	100 pcs	6223	Oral Tips	100 pcs	6210
Plunger	1 pc	6985	Spreader Tips	100 pcs	6223

System 360 Accessories					
Dynamic Mixing Tips Yellow	40 pcs	6162	Fixation Ring		1 pcs 6163



Impression

C-Silicone

Prosthetics

SPEEDEX®

SPEEDEX is a premium C-Silicone in A-quality. SPEEDEX has elastic recoverability and reproduction, which is otherwise only achieved by A-Silicones. As a result of the low shrinkage, impressions remain dimensionally stable and can be cast for up to 7 days without problems.

All consistencies of SPEEDEX are mixed with a Universal Activator. Processing is flexible by means of underdosing or overdosing. After just two minutes in the mouth the impression is fully set.



Brief description

SPEEDEX®

C-Silicone in A-Quality: top quality of the C-Silicones
High dimensional stability: up to 7 days
Variable processing time: depending on dosage of the activator

RAPID

All-in-one workstation: optimised to the user's needs
Basic product range: 2 x putty, 1 x wash
Mixing control: colour change during mixing

COLTOFLAX® / COLTEX®

First silicone from COLTENE: for every indication
Extensive range: 1 x putty, 4 x different consistencies

RAPID

Rapid, the C-Silicone with colour change for outstanding mixing control. The special wash material Rapid Liner changes colour with successful mixing. Dependable mixing and the practical dispensing system simplify precise impression-taking.

COLTOFLAX® / COLTEX®

With Coltoflax/Coltex began the success story of COLTENE silicones. A putty and four different consistencies, Coltoflax/Coltex offer an extensive product range. The right material for every indication and high quality are the factors that assure the right impression.

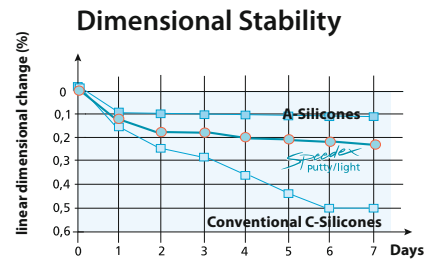


Consistencies

	WASH	TRAY
SPEEDEX®	light body medium body	putty
RAPID	Rapid Liner	Rapid Rapid soft
COLTOFLAX® / COLTEX®	Coltex extrafine Coltex fine Coltex medium	Coltoflax Coltex compact

Speedex

Speedex medium has outstanding wettability and excellent flow characteristics. Saliva and blood are displaced by Speedex medium and have no negative side effects. With the variable setting time of Speedex medium the important mucosal movements, which are necessary for the full and partial denture technique, can be taken very precisely. A perfect impression is the key for an accurate fitting denture.



High dimensional stability:
models can be poured up to seven days after impression taking.

Speedex putty	4970
Single Package	910 ml
Speedex medium body	4986
Single Package	140 ml

Speedex light body	4980
Single Package	140 ml
Speedex Universal Activator	4990
Single Package	60 ml

Rapid



Simplicity and rationality are the trademarks of COLTENE Rapid. COLTENE Rapid provides the appropriate material for every application. And in addition, unparalleled aids ensuring excellent and reliable application of all system components. Optimal homogeneous control thanks to color change driving mixing.

Rapid System-Pack 4505	
Putty	1 x 900 ml
Rapid Activator	1 x 40 ml
Dosing Spoon	1pc
Liner	1 x 150 ml

Rapid 4515	
Putty	1 x 900 ml
Rapid Activator	1 x 40 ml
Dosing Spoon	1 pc

Rapid Soft System-Pack 4585	
Putty	1 x 900 ml
Rapid Activator	1 x 40 ml
Dosing Spoon	1 pc
Liner	1 x 150 ml
Liner Activator	1 x 18 ml
Dosing Syringe	1 pc
Applicator	1 pc
Mixing Rod	1 pc

Rapid Liner 4540	
Liner	1 x 150 ml
Liner Activator	1 x 18 ml
Dosing Syringe	2 pcs
Applicator	1 pc
Mixing Rod	1 pc.

Rapid Liner without applicator 4541	
Liner	1 x 150 ml
Liner Activator	1 x 18 ml
Dosing Syringe	2 pcs

Liner Activator	1 x 18 ml
Dosing Syringe	1 pc
Applicator	1 pc
Mixing Rod	1 pc

Rapid Activator 4530	
Activator	1 x 40 ml

Rapid Soft 4590	
Putty	1 x 900 ml
Rapid Activator	1 x 40 ml
Dosing Spoon	1 pc

Rapid Liner Activator 4550	
Liner Activator	1 x 18 ml

Rapid Liner Eco 4547	
Liner	3 x 150 ml
Liner Activator	3 x 18 ml

Coltoflax / Coltex



Coltoflax/Coltex offers you one putty material and 4 different materials in tubes. That means: you are completely free to choose the impression technique that suits you best. Easy handling characteristics, excellent physical properties and consistent quality are the features that guarantee successful impression results with Coltoflax/Coltex.

Coltoflax (Base und Activator)	4015	Coltoflax Activator Paste	4046
Single Package	1 × 950 ml	Coltoflax mix	1 × 40 ml
Coltex extrafine	4115	Coltex extrafine mix	4142
Single Package	1 × 160 ml	Coltex extrafine mix	1 × 20 ml
Coltex fine	4165	Coltex mix	4392
Single Package	1 × 165 ml	Coltex mix	1 × 40 ml
Coltex medium	4215	Coltex compact	4365
Single Package	1 × 165 ml	Single Package	1 × 165 ml

Pressure Spot Indicator



The polysiloxane-based material for the location of high spots in dentures.

PSI	4440	PSI CATALYST	4445
Catalyst	1 × 20 ml	Catalyst	1 × 20 ml
Base	1 × 55 ml		

Accessories see page 25

Speedex



Speedex Universal Activator	4990
Single Package	1 × 60 ml

Rapid



Rapid Activator	4530
Activator	1 × 40 ml

Rapid Liner Activator	4550
Liner Activator	1 × 18 ml

Rapid Liner Eco	4547
Liner	3 × 18 ml

Coltex / Coltoflax



Coltex mix	4392
Coltex mix	1 × 40 ml

Coltex extrafine mix	4142
Coltex extrafine mix	1 × 20 ml

Coltoflax Activator Paste	4046
Coltoflax mix	1 × 40 ml

PSI CATALYST



PSI CATALYST	4445
Catalyst	1 × 20 ml

Gingiva Reproduction
Lab silicones

Laboratory / Practice



GI-MASK Automix New Formula



GI-MASK Automix New Formula provides accurate reproduction of soft tissue structure. The A-Silicone based gingival mask provides all information for implant supra-structures and frameworks. The aesthetic colouring of the gingival mask supports you to imagine the clinical situation.

Starter-Kit		8060
GI-MASK New Formula cartridges	2 × 50 ml	
GI-MASK Universal Separator	1 × 50 ml	
Mixing Tips Yellow	12 pcs	
Oral Tips Yellow	12 pcs	
Trimmer for Silicones	1 ps	

Refill		8065
GI-MASK New Formula cartridges	2 × 50 ml	
Mixing Tips Yellow	12 pcs	
Oral Tips Yellow	12 pcs	

Accessories		
Mixing Tips Yellow	40 pcs	6550
Oral Tips Yellow	100 pcs	6555
Dispenser 50 ml/75 ml	1 pc	6900
Trimmer for Silicones	1 pc	8075

Separator		8000
GI-MASK Universal Separator	1 × 50 ml	

GI-MASK



The GI-MASK is the silicone-based gingival mask, for precise reproduction of gingival contours around the margins, it maintains its accuracy for days and right up to the moment until the restoration is finished.

Starter-Kit		8030
GI-MASK Base	1 × 150 ml	
GI-MASK Activator	1 × 18 ml	
GI-MASK Universal Separator	1 × 50 ml	
Mixing Tips	20 pcs	
Mixing and application accessories		

Single Package		8035
GI-MASK Base	1 × 150 ml	
GI-MASK Activator	1 × 18 ml	
Mixing Tips	20 pcs	
Mixing and application accessories		

Refill Kit		8037
Base	1 × 150 ml	
Activator	1 × 18 ml	

Separator		8000
GI-MASK Universal Separator	1 × 50 ml	

Activator		8036
GI-MASK Activator	1 × 18 ml	

Lab-Putty



Lab-Putty is the outstanding polysiloxane laboratory modelling product material with 62 – 67 Shore A for model repairs, isolation and denture heat protection, keys and block outs and matrixes for formation of general occlusion and functional patterns.

Lab-Putty 1.35 kg	8805
Lab-Putty Base	1 × 900 ml
Lab-Putty Activator	1 × 40 ml
Dosing spoon	1 pc

Lab-Putty 7.5 kg	8815
Lab-Putty Base	1 × 5000 ml
Dosing spoon	5 pcs

Lab-Putty Activator	8840
Activator	1 × 40 ml

Lab-Putty hard



A smooth acrylic surface is guaranteed with the use of Lab Putty hard for relining, keys and repair models. Separate isolation is eliminated. Its high heat-resistance (300° C) and perfect dimensional stability makes it suitable for soldering models (90 Shore A).

Lab-Putty hard 1.8 kg	8882
Lab-Putty hard Base	1 × 900 ml
Activator	1 × 40 ml
Dosing spoon	1 pcs

Lab-Putty hard 5 kg	8880
Lab-Putty hard Base	1 × 2600 ml
Dosing spoon	5 pcs

Lab-Putty Activator	8840
Activator	1 × 40 ml

Wax

Laboratory / Practice

HYGENIC u-shaped occlusal rim wax



Recessed base aids adaption to base plate. Can be reshaped at room temperature to fit individual arch.

HYGENIC u-shaped occlusal rim wax		
Standard Package	21 pcs	H04030
Laboratory Package	100 pcs	H00822

HYGENIC bite-wafers



This bite-mask contains a thin aluminium foil within two wax layers. Laminated, blue.

HYGENIC bite-wafers		
Double	24 pcs	H00825

U-shaped and designed for a fast precise retain of the situation.

HYGENIC bite-wafers		
Yellow, soft	50 pcs	H00839
Green, hard	50 pcs.	H03365

HYGENIC medium-soft no. 3 pink wax



Easily softened and cooled to minimize shrinkage. Soft modeling.

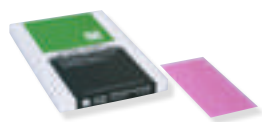
HYGENIC medium-soft no. 3 pink wax	
450 g	H00806
2.25 kg	H00812

HYGENIC red wax

This wax shows the same consistency as the medium-soft no. 3 pink wax.

HYGENIC red wax	
450 g	H00805
2.25 kg	H00811

HYGENIC extra tough wax



Durable, all-purpose wax that is a carefully prepared blend of exclusive waxes. Tough, pliable and sufficiently tacky to hold teeth well. Takes polish and boils out.

HYGENIC extra tough wax	
450 g	H00803
2.25 kg	H00809

HYGENIC yellow bite wax



Economical alternative to Beeswax with many of the same characteristics.

HYGENIC yellow bite wax	
450 g	H00807
2.25 kg	H00813

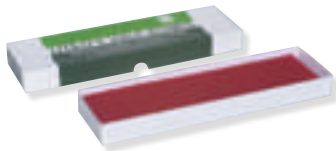
HYGENIC square wax ropes



Sticky, soft and narrow wax ropes.

HYGENIC square wax ropes		
4.8 mm ² × 279 mm Red	44 pcs	H00819
4.8 mm ² × 279 mm White	44 pcs	H00820

HYGENIC round wax strips



Shaped in round strips, used for preserving the periphery roll and extending and building up impression trays and post-damming.

HYGENIC round wax strips		
4.8 mm × 279 mm Red	80 pcs	H00817
4.8 mm × 279 mm White	80 pcs	H00818

HYGENIC wax sticks



Readily formed without heating, sticks are softer and tackier than „Round Wax Strips“ to minimize tissue displacement.

HYGENIC wax sticks		
Scented	48 pcs	H00826

HYGENIC boxing wax



Designed for boxing impressions, withstands extreme heat given off by dental stone during setting.

HYGENIC Boxing wax, regular		HYGENIC boxing waxes, extra fine	
1.6 mm × 38.4 mm × 305 mm 450 g	H00815	1 mm × 38.4 mm × 305 mm 450 g	H00816
1.6 mm × 38.4 mm × 305 mm 2.25 kg	H00837	1 mm × 38.4 mm × 305 mm 2.25 kg	H00838

HYGENIC beeswax



Made of pure, natural beeswax with no additives. Wax softens easily under hot water.

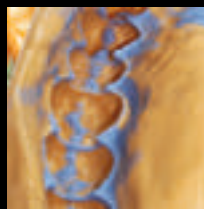
HYGENIC beeswax		
225 g	48 pcs	H00832
450 g	48 pcs	H00833
2.25 kg	48 pcs	H00834

HYGENIC orthodontic tray wax



Sticky, soft and narrow wax ropes.

HYGENIC Orthodontic Tray Wax Sticks		
White	48 pcs	H00827



CH **Coltène/Whaledent AG**
 Feldwiesenstrasse 20
 9450 Altstätten / Switzerland
 T + 41 71 757 53 00
 F + 41 71 757 53 01
 info.ch@coltene.com

CN **Coltene/Whaledent China Trading Co. Ltd.**
 Rm. 1103/1104, Bldg. B2, Wu Dong Plaza
 #9 Chegongzhuang Street, West District
 Beijing 100044 / P.R. China
 T + 86 10 6212 3251
 F + 86 10 6212 3252
 info.cn@coltene.com

IT **Coltène Italia S.r.l.**
 c/o Polo Tecnologico della Brianza
 Via Alessandro Volta, 94 - Cond. Bianchi
 20832 Desio (MB) / Italy
 T + 39 0362 62 67 32
 F + 39 0362 63 25 80
 info.it@coltene.com

DE **Coltène/Whaledent GmbH + Co. KG**
 Raiffeisenstraße 30
 89129 Langenau / Germany
 T + 49 7345 805 0
 F + 49 7345 805 201
 info.de@coltene.com

FR **Coltène/Whaledent s.a.r.l.**
 75 Boulevard Marie et Alexandre Oyon
 72058 Le Mans Cedex 2 / France
 T + 33 2 43 39 30 30
 F + 33 2 43 39 30 40
 info.fr@coltene.com

UK **Coltène/Whaledent Ltd.**
 The President Suite
 Kendal House, Burgess Hill
 Victoria Way
 West Sussex, RH15 9NF / UK
 T + 44 1444 235486
 F + 44 1444 870640
 info.uk@coltene.com

US **Coltène/Whaledent Inc.**
 235 Ascot Parkway
 Cuyahoga Falls, Ohio 44223 / USA
 T + 1 330 916 8800
 F + 1 330 916 7077
 info.us@coltene.com

IN **Coltène/Whaledent Private Ltd.**
 106/107, Hallmark, Vasant Oscar
 L.B.S Marg, Mulund West
 Mumbai 400080, Maharashtra / India
 T + 91 22 25923626
 F + 91 22 25623165
 info.in@coltene.com

BR **Vigodent SA Indústria e Comércio**
 Rua Pesqueira 26 Bonsucesso
 Rio de Janeiro CEP 21041-150 / Brazil
 T + 5521 3865 5600
 F + 5521 2280 8411
 sac@vigodent.com.br

© 2014 Coltène/Whaledent AG – www.coltene.com



COLTENE

