

Atlantis® abutments


















- Material reference guide. Biocompatible materials.

Atlantis® Crown - Shade guide

	ZIRCONIA												
	Milled from solid zirconia blanks - Yttria-stabilized tetragonal zirconiapolycrystals (Y-TZP). Available in 13 shades.												
	Shade 00T	Shade 11T	Shade 12T	Shade 13T	Shade 14T	Shade 21T	Shade 22T	Shade 23T	Shade 31T	Shade 32T	Shade 33T	Shade 42T	Shade 43T
Guideline for usage	Used with very light and bleached shades	Resembles Vita shade guide's A1	Resembles Vita shade guide's A2	Resembles Vita shade guide's A3	Resembles Vita shade guide's A3,5	Resembles Vita shade guide's B1	Resembles Vita shade guide's B2	Resembles Vita shade guide's B3	Resembles Vita shade guide's C1	Resembles Vita shade guide's C2	Resembles Vita shade guide's C3	Resembles Vita shade guide's D2	Resembles Vita shade guide's D3
Atlantis® Crown, cut-back													
For cement-retained restoration													
Atlantis® CustomBase Crown*, cut-back and full contour													
For screw-retained restoration													

NOTE: Images shown for communication purposes only and should not be used as a representation of the exact material color.
 *Atlantis CustomBase solution, consist of an Atlantis Abutment and a Atlantis Crown.



	Titanium	Titanium gold-shaded	Zirconia				
	Milled from solid titanium alloy blanks, titanium Alloy 6Al-4V (Grade 5)		Milled from solid zirconia blanks. Available in five shades, including white and translucent white. Yttria-stabilized tetragonal zirconiapolycrystals (Y-TZP)				
Guideline for usage		Thin coating of titanium nitride (TiN) which gives a warm gold-shaded color.	shade 00T	shade 00	shade 10	shade 20	shade 30
		Used with very light and bleached shades. Shade 00T has a higher translucency allowing for more light transmission.	Used with very light and bleached shades.	Used with light to mid range shades, related to the Vita shade guide, e.g. B1	Used with mid range shades, related to the Vita shade guide, e.g. A2.	Used with stronger/darker shades, related to the Vita shade guide, e.g. B3.	
Atlantis® Abutment							
for cement-retained restorations			N/A				
Atlantis® Crown Abutment							
for single-tooth, screw-retained restorations		N/A					
Atlantis® CustomBase solution*							
for screw-retained restorations			Available in 13 shades. Refer to Atlantis Crown shade guide on previous side.				
Atlantis® Conus Abutment 1. Atlantis Conus Abutment custom 2. Atlantis Conus Abutment overdenture							
for attachment-retained restorations, utilizing friction fit	 1  2	 1	N/A				

NOTE: Images shown for communication purposes only and should not be used as a representation of the exact material color.
 *Atlantis CustomBase solution, consist of an Atlantis Abutment and a Atlantis Crown.

ATLANTIS™

For all major
implant systems

Beyond CAD/CAM

ATLANTIS™ patient-specific abutments



DENTSPLY
IMPLANTS

Unique originals for unique individuals

As a part of the digital solutions offering from DENTSPLY Implants, ATLANTIS abutments support cement-, screw- and attachment-retained restorations for all major implant systems, providing an excellent foundation for optimal function and esthetics.

Incorporating ATLANTIS into the dental practice and dental laboratory provides peace of mind for both clinicians and dental technicians while allowing for increased efficiency and profitability.



Surgical flexibility

ATLANTIS abutments are available for all major implant systems and with 85 compatible implant connections, you can restore your preferred implant system(s) with ATLANTIS abutments.



Restorative freedom

ATLANTIS abutments offer you freedom of restorative choice with cement-, (single-tooth) screw-, and attachment-retained restorations in biocompatible materials including titanium, gold-shaded titanium and zirconia, meeting patient requirements and preferences for function and esthetics.

 <math><0.2\%</math>

Complaint rate based on an analysis of registered screw-related complaints in relation to the total number of abutments sold since 2008

33 

Published clinical studies and case reports documenting success using ATLANTIS abutments on different implant platforms

 85

Number of compatible implant connections



Comprehensive warranty program*



99%

On-time, early or same-day shipping performance



>1.5M

ATLANTIS abutments produced and sold globally

1999

ATLANTIS Abutment is introduced and the first abutments are delivered

1 min 

Time it can take to enter and process an order for an ATLANTIS Abutment in ATLANTIS WebOrder

*Subject to the terms and conditions of the ATLANTIS abutments warranty.

ATLANTIS VAD™ goes beyond CAD

CAD = Designed by dental technicians/aided by computers

ATLANTIS VAD™ = Designed by computers/aided by dental technicians

The ATLANTIS BioDesign Matrix is a synergy of four unique features that together allow for the design and production of consistent, high-quality, patient-specific abutments for all major implant systems.

ATLANTIS VAD™

Designed from the final tooth shape. ATLANTIS VAD (Virtual Abutment Design) software makes it possible to design each abutment in relation to the edentulous space and the surrounding teeth for high precision and a more natural esthetic result.

Natural Shape™

Unique anatomical shape and emergence profile that nourishes soft tissue management and provides excellent support and retention of the final restoration.

Soft-tissue Adapt™

The combination of biological, anatomical and engineering parameters that provide the beneficial conditions for healing soft tissue and adapting it to the finished crown.

Custom Connect™

Strong and stable fit – customized connection for all major implant system. ATLANTIS abutment connections and screws are specifically engineered and tested for each implant interface for accurate fit, stability, and a successful result.



ATLANTIS BioDesign Matrix™

Custom Connect™ – strong and stable fit

- Indexing – ensures the abutment is correctly oriented
- Anti-rotation – prevents movement during torquing
- Abutment-to-implant fit – designed and milled precise connection providing optimal load transfer
- Abutment screw – works with existing drivers and provides retrievable mechanical attachment

The natural choice

Why should you choose ATLANTIS patient-specific solutions?

All the necessary parameters are taken into consideration in the design of ATLANTIS abutments for outstanding prosthetic solutions.

Through the use of the patented ATLANTIS VAD (Virtual Abutment Design) software, ATLANTIS abutments are individually designed from the final tooth shape, taking the specific edentulous space, surrounding teeth, and soft tissue anatomy into consideration.

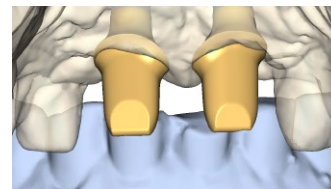
Given these factors, implant prosthetics truly mimic natural tooth function and appearance. Furthermore, ATLANTIS patient-specific abutments eliminate the time needed for inventory management and chairside modification.



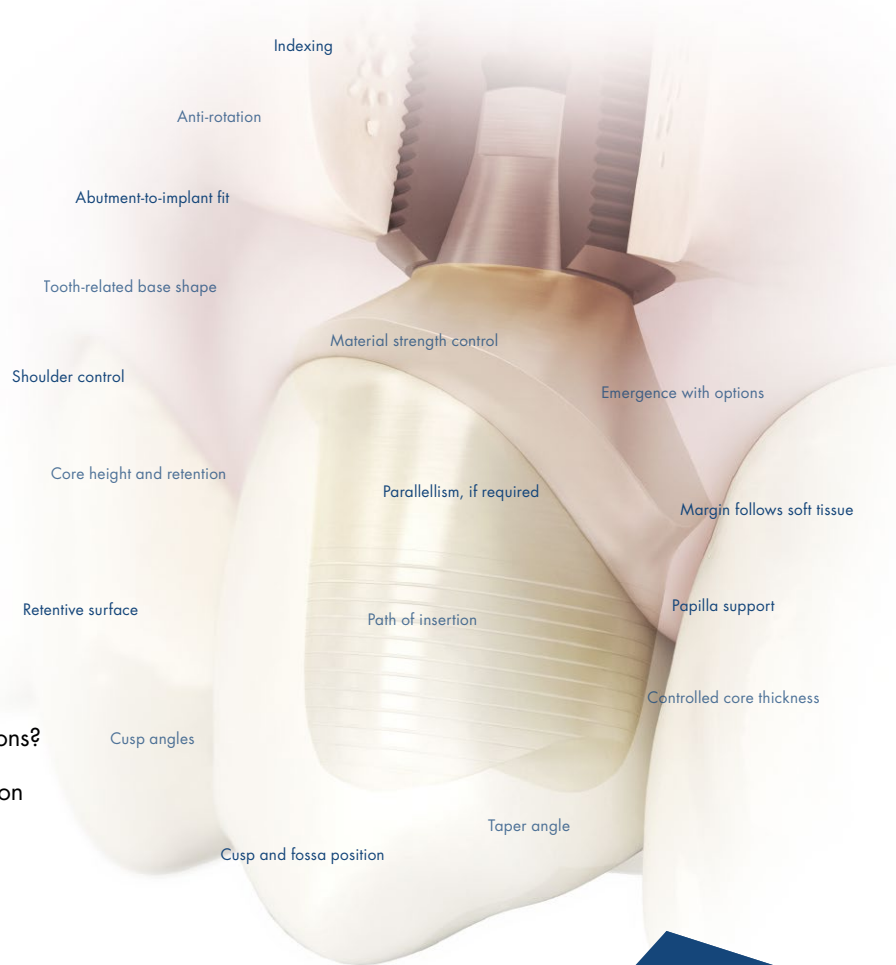
Proposed tooth shape



Abutment design taking all important factors into account



Final ATLANTIS Abutment design



ATLANTIS VAD™
considers numerous
features and design
parameters for premium
prosthetic solutions.

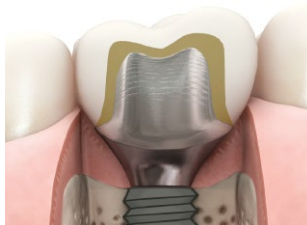
For all major
implant systems

Original abutments for patient-specific restorations

ATLANTIS abutments are patient-specific abutments, designed to fit the individual patient's anatomy.

Each abutment is individually designed in ATLANTIS VAD, from the final tooth shape taking the specific edentulous space, surrounding teeth and soft tissue anatomy into consideration.

Taking these factors into account produces implant prosthetics that mimic true natural tooth function and appearance.



ATLANTIS patient-specific abutment



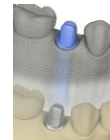
Stock abutment

Cement-retained restorations

ATLANTIS Abutment is a uniquely designed, patient-specific abutment for cement-retained restorations.

Margins are ideally designed and placed for easy and safe removal of excess cement and the abutments can be installed using the ATLANTIS Abutment Insertion Guide. This ensures efficient restorative procedures, reducing chairtime.

Ordering is simple and requires only a standard impression sent to the dental laboratory with a request for an ATLANTIS Abutment.



ATLANTIS™ Abutment Core File

The digital file of the total case, including the outer surface of the ATLANTIS Abutment, allows the dental laboratory to design a temporary or final crown even before the final ATLANTIS Abutment is delivered.



ATLANTIS Abutment Insertion Guide ensures correct installation of the ATLANTIS Abutment and simplifies the restorative handling procedures.



ATLANTIS Abutment in titanium, milled from a solid titanium alloy blank, titanium alloy 6Al-4V (grade 5). Suitable for all positions in the mouth.



ATLANTIS Abutment in gold-shaded titanium alloy 6Al-4V (grade 5) with a thin coating of biocompatible titanium nitride (TiN). Suitable for all positions in the mouth.



ATLANTIS abutments in zirconia, milled from solid blanks of yttria-stabilized tetragonal zirconia polycrystals (Y-TZP) and available in different shades. Suitable for all positions in the mouth.

Screw-retained restorations

ATLANTIS Crown Abutment is an efficient, effective and esthetic alternative to traditional cast abutments for single-tooth, screw-retained restorations with porcelain or composite applied directly to the abutment.

ATLANTIS Crown Abutments do not require further modification and do not require the use of cement, effectively reducing patient chairtime.

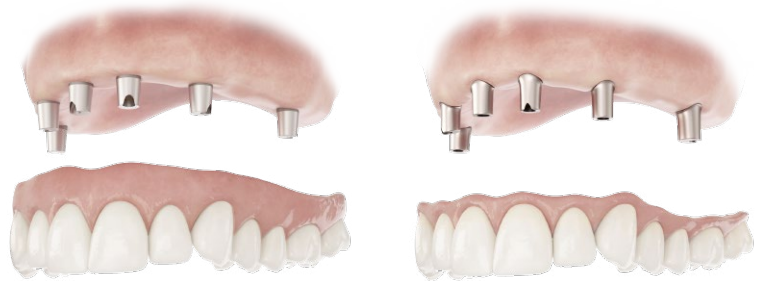
Likewise, screw-retained abutments are easily retrievable, if needed, saving you the time and cost of preparing a separate new crown.



ATLANTIS Crown Abutment is available in five shades of zirconia including a translucent option in white, as well as titanium.

Attachment-retained restorations

ATLANTIS Conus Abutment is a uniquely designed, conical shaped abutment that incorporates a friction fit, implant-borne prosthesis while being removable like an overdenture. It allows optimal access for oral hygiene while providing the patient with a cost-effective treatment option.



ATLANTIS™ Conus Abutment – overdenture

For removable overdentures designed to fit SynCone caps.

ATLANTIS™ Conus Abutment – custom

For removable bridges and overdentures with more individual design options.



ATLANTIS Crown Abutment does not require the use of cement, and can be easily retrieved if needed.



ATLANTIS Crown Abutment in titanium alloy 6Al-4V (grade 5) can be finalized with titanium porcelain or composite.



ATLANTIS Conus Abutment - overdenture is designed for optimal retention for the SynCone 5* caps.



SynCone 5* caps fits with friction fit to the ATLANTIS Conus Abutment – overdenture.

ATLANTIS™ is good business

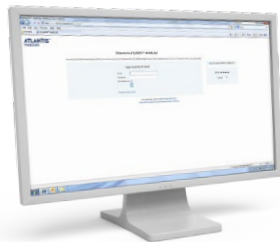
Incorporating ATLANTIS is an easy way to add a new, premium prosthetic dimension to the solution offerings of both dental practices and dental laboratories.

Available for all major implant systems, ATLANTIS supports streamlined and consistent workflows for all implant-supported restorations.

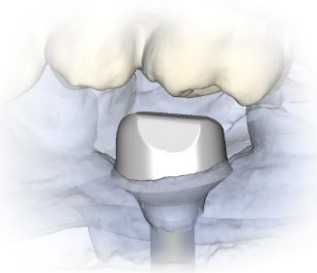
Additionally, ATLANTIS reduces time and costs related to inventory management, maintenance, and chairside

modifications. It brings simplicity and profitability to the dental practice, while freeing up time for additional cases to be created at the dental laboratory.

Best of all, ATLANTIS is an open, fully flexible business model that easily adjusts to dental practice and dental laboratory needs and processes, requiring no investment in software or equipment.



2 The order is entered by the dental technician using ATLANTIS WebOrder. Case models and materials can be shipped to DENTSPLY Implants or scanned at the dental laboratory.



3 All ATLANTIS abutments are designed by DENTSPLY Implants using the ATLANTIS VAD software. Designs can be reviewed and/or edited in ATLANTIS 3D Editor before being produced by DENTSPLY Implants.



4 Once produced, ATLANTIS abutments are returned to the dental laboratory which then produces the final prosthetic solution and sends the completed case back to the clinician.

1 An implant-level impression is taken by the clinician and sent to the dental laboratory with a request for ATLANTIS abutments.



Designed for practice success

- A choice of anatomical emergence profiles for excellent function and esthetics
- Simple restorative procedure – just take an impression and send it to your dental laboratory with a request for ATLANTIS abutments
- Comprehensive warranty program*

Developed for laboratory efficiency

- Consistent, premium quality and delivery performance regardless of order volume
- Time designing and modifying abutments eliminated, freeing up skilled technicians' time for other tasks
- No investment in or maintenance of additional equipment and software



**Subject to the terms and conditions of the ATLANTIS abutments warranty.*

Immediate Smile® featuring ATLANTIS™ Abutment

With this digital treatment concept, all components for guided implant placement and immediate, individualized temporization are available at one single surgical visit. The ATLANTIS Abutment and temporary crown are delivered at implant installation and provide ideal conditions for individualized esthetics and healthy soft tissue.

Intraoral scanning for ATLANTIS™ Abutment

The streamlined process of using intraoral scanning (compatible with iTero) ensures efficient coordination between the dental practice and dental laboratory.

Lab-based scanning for ATLANTIS™ abutments

Lab-based scanning capability (compatible with 3M ESPE Lava, 3Shape and Dental Wings) allows the dental laboratory to quickly and easily transfer digital scan information to DENTSPLY Implants.

ATLANTIS Scan Upload (stand alone software tool) allows dental laboratories with open STL scanners to upload scans for ATLANTIS abutments.

ATLANTIS™ WebOrder

ATLANTIS orders can be conveniently placed 24 hours a day, 7 days a week via an online ordering system for order entry that is quick and easy.

ATLANTIS VAD™ software

Virtual abutment design software that considers the edentulous space and surrounding teeth for higher precision and more natural esthetics.

ATLANTIS™ CaseSafe

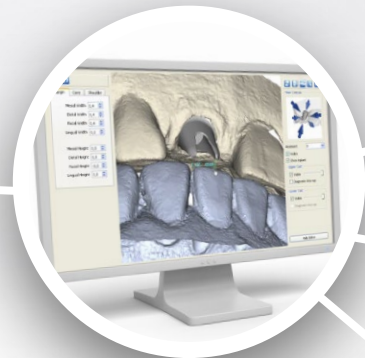
When DENTSPLY Implants is scanning the case, ATLANTIS CaseSafe ensures efficient processing of your order and safe transport of your case materials.

Let's get connected

DENTSPLY Implants provides digital solutions that make it easier for everyone to connect; streamlining the workflow for all your restorations.

This connectivity is a result of our commitment to delivering consistent, reliable and high quality product and services. It supports the collaboration between DENTSPLY Implants and our customers as well as among the members of the

treatment team and is present throughout the planning and treatment processes. Connectivity also helps guarantee that you receive exactly what you expect, each and every time.



ATLANTIS™ 3D Editor

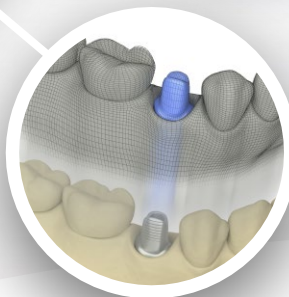
Allows for review and editing of the abutment design to be made before production.



ATLANTIS patient-specific abutments

The technology behind ATLANTIS provides an ideal foundation for function and esthetics.

It also allows for a functionally identical duplicate abutment to be ordered for use as a master die, which supports enhanced dental laboratory accuracy and optimized crown fit, while eliminating the need for placement and retrieval of the abutment used clinically.



ATLANTIS™ Abutment Core File

Digital file of the entire case, including the outer surface of the ATLANTIS Abutment, that allows the dental laboratory to design a temporary or final crown, even before the final abutment is delivered.



Later order of ATLANTIS™ abutments

Digitally-captured abutment design that allows for re-orders of original ATLANTIS abutments to be placed at a later date (with or without design changes), eliminating the need for additional impressions.

We have you covered

Naturally, the abutments solution that offers the greatest freedom is also backed by a comprehensive warranty. If an implant supplier does not honor its warranty due to your use of ATLANTIS abutments, DENTSPLY Implants will cover both the abutment and the implant.*



LIFETIME



LIFETIME



5 YEARS



For added assurance that your patients are receiving genuine ATLANTIS original abutments, warranty cards are provided with an order identification number for every case delivered.

*Subject to the terms and conditions of the ATLANTIS abutments warranty. Germany 30 years for titanium and gold-shaded titanium.

About DENTSPLY Implants

DENTSPLY Implants offers comprehensive solutions for all phases of implant therapy, including ANKYLOS[®], ASTRA TECH Implant System[™] and XiVE[®] implant lines, digital technologies, such as ATLANTIS[™] patient-specific CAD/CAM solutions and SIMPLANT[®] guided surgery, SYMBIOS[®] regenerative solutions, and professional and business development programs, such as STEPPS[™]. DENTSPLY Implants creates value for dental professionals and allows for predictable and lasting implant treatment outcomes, resulting in enhanced quality of life for patients.

Follow DENTSPLY Implants



www.dentsplyimplants.com

About DENTSPLY International

DENTSPLY International Inc. is a leading manufacturer and distributor of dental and other healthcare products. For over 115 years, DENTSPLY's commitment to innovation and professional collaboration has enhanced its portfolio of branded consumables and small equipment. Headquartered in the United States, the Company has global operations with sales in more than 120 countries.





Atlantis®

Accurate, convenient control

Atlantis® CustomBase solution
for screw-retained restorations



Unique, premium quality solutions – your way

Something unique is happening with screw-retained solutions. Innovations are changing the landscape. For the first time, a patient-specific screw-retained solution has been developed.

The Atlantis CustomBase solution features an Atlantis Abutment and Atlantis Crown with a customized emergence profile, available in titanium or gold-shaded titanium and compatible with your choice of implant systems¹.

Are you ready to take control?

It is the first true patient-specific, two-piece screw-retained solution

- Patient-specific (one size does not fit all)
- Customized emergence profile of both Atlantis Abutment and Atlantis Crown
- Flexibility of abutment material
 - titanium or gold-shaded titanium
- For all major systems¹

“I know my patients want to be out of the chair as quickly as possible and with the best esthetic results. Atlantis offers a wide selection of solutions, which makes this a reality. I can receive an abutment that is designed to match the natural tooth, a solution that can be cemented intraorally or extraorally, and I can work with the implant system I am used to.”

Dr. Lars-Magnus Almgren, DDS
Tandverket, Gothenburg, Sweden



All together now – Atlantis® CustomBase solution for screw-retained restorations



Cut-back crown in zirconia or full-contour crown in zirconia with screw access hole.



Cut-back crown file or full-contour crown file with screw access hole.



Core File with screw access hole indicated.

Atlantis® Crown, Cut-Back and Full-contour

The Atlantis Crown with a screw access hole can be ordered at the same time as the Atlantis Abutment. The crown is available in a cut-back version for porcelain veneering or as a full-contour version for staining and glazing the crown. With a fixed cement space of 40 µm, the crown is cemented extraorally to the Atlantis Abutment to avoid potential complications caused by excess cement. Available in 12 different translucent shades of zirconia and one white zirconia to resemble the shades on the Vita shade guide.

Atlantis® Abutment

A uniquely designed, patient-specific abutment for single tooth, screw-retained restorations. Built-in anti-rotational features created by the patented Virtual Atlantis Design (VAD) software and a retentive abutment surface. Available in biocompatible materials, including titanium and gold-shaded titanium.

Atlantis® Crown File

The Atlantis Crown File is a patient-specific, “ready-to-mill” digital file of the cut-back or the full-contour crown design. Designed in the patented Virtual Atlantis Design (VAD) software, the crown file is downloaded to the customer’s software, and the crown is milled in the dental laboratory.

Atlantis® Core File

The Atlantis Core File with a screw access hole indicated can be ordered together with the Atlantis Abutment for crown production in the dental laboratory. Atlantis Core File (a digital file of the total case, including the outer surface of the Atlantis Abutment) is easy to import in the design software.

Outstanding flexibility in your workflow

- No investment in or maintenance of additional equipment and software
- A choice of using your own crown design and crown milling capacity by utilizing Atlantis Core File or Atlantis Crown File
- Free up skilled dental technician's time for other tasks
- A business model that is less vulnerable in peak seasons



Workflow - Atlantis® CustomBase solution with an Atlantis® Crown in zirconia



Atlantis® WebOrder

Easily order your Atlantis CustomBase solution. Built-in features allow you to adjust porcelain cut-back values and abutment parameters.



Virtual Atlantis® Design (VAD)

Patented design software allows you to take the edentulous space, surrounding teeth and soft tissue anatomy into consideration. The abutment and crown are designed to match the anatomical tooth shape.



Atlantis® Editor

Unique, advanced software enables you to modify the Atlantis Abutment and Atlantis Crown well in advance of the milling process.



Atlantis® solution

The Atlantis CustomBase solution, consisting of an Atlantis Crown, an Atlantis Abutment and an Atlantis Abutment screw, is delivered to the dental laboratory.



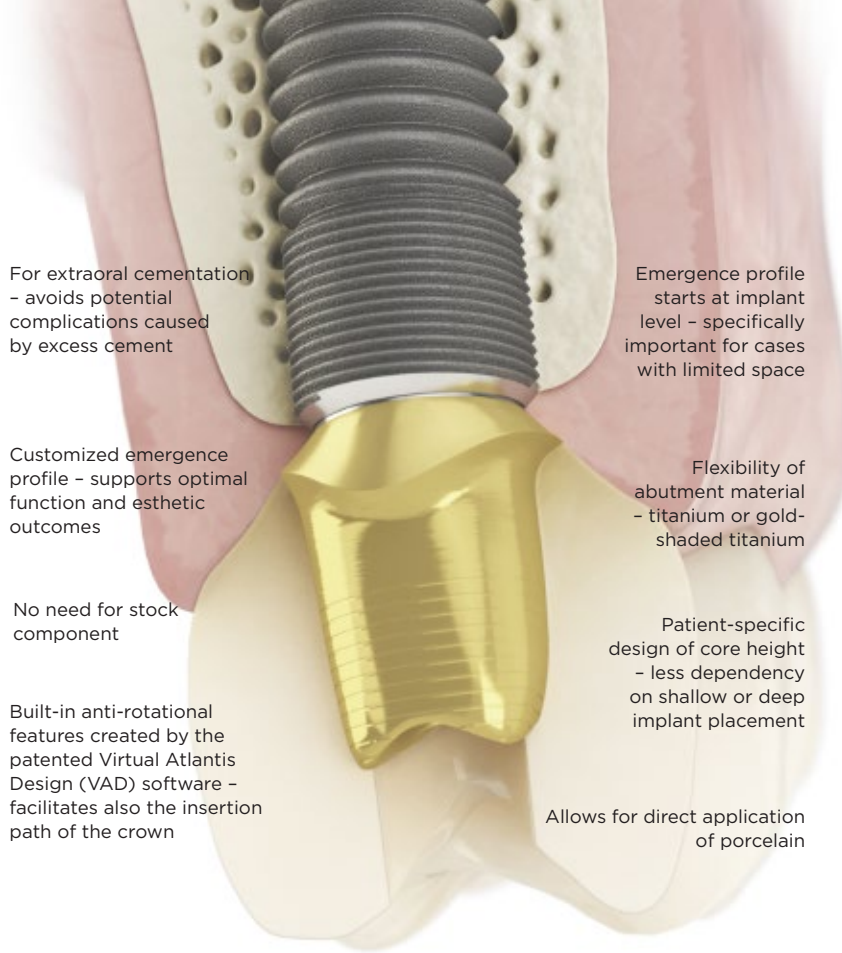
Cementation

The crown with a screw access hole is cemented to the abutment extraorally. The Atlantis Crown has a fixed cement space of 40 µm.



Installation

After cementation, the Atlantis CustomBase solution is ready for installation in the patient's mouth.



For extraoral cementation
- avoids potential complications caused by excess cement

Customized emergence profile - supports optimal function and esthetic outcomes

No need for stock component

Built-in anti-rotational features created by the patented Virtual Atlantis Design (VAD) software - facilitates also the insertion path of the crown

Emergence profile starts at implant level - specifically important for cases with limited space

Flexibility of abutment material - titanium or gold-shaded titanium

Patient-specific design of core height - less dependency on shallow or deep implant placement

Allows for direct application of porcelain

Your preferred implant system

Atlantis abutments are compatible with an extensive range of implant connections, giving you the opportunity to work with your preferred implant system¹.



We've got you covered

By choosing Atlantis, you can be assured that the prosthetic solutions you receive are of the highest quality, safety and reliability. This is why Atlantis patient-specific prosthetic solutions come with an exclusive and industry-leading comprehensive warranty program. If an implant supplier does not honor its warranty due to your use of Atlantis abutments, Dentsply Sirona will cover the abutment, the crown and the implant².



1. Refer to the Atlantis abutments implant compatibility chart.
 2. Subject to the terms and conditions of the Atlantis abutments warranty.
- All trademarks, company names and implant designs are the property of their respective owners.



"There was no doubt in my mind that the best restorative option was an implant. I look and feel a whole lot better - if I do say so myself!"

Christina G



Radiograph of final restoration. Astra Tech Implant System EV with an Atlantis CustomBase solution designed with an Atlantis Crown, Full-contour.

About Dentsply Sirona Implants

Dentsply Sirona Implants offers comprehensive solutions for all phases of implant therapy, including Ankylos®, Astra Tech Implant System® and Xive® implant lines, digital technologies, such as Atlantis® patient-specific solutions and Simplant® guided surgery, Symbios® regenerative solutions, and professional and business development programs, such as STEPPS™. Dentsply Sirona Implants creates value for dental professionals and allows for predictable and lasting implant treatment outcomes, resulting in enhanced quality of life for patients.

About Dentsply Sirona

Dentsply Sirona is the world's largest manufacturer of professional dental products and technologies, with a 130-year history of innovation and service to the dental industry and patients worldwide. Dentsply Sirona develops, manufactures, and markets a comprehensive solutions offering including dental and oral health products as well as other consumable medical devices under a strong portfolio of world class brands. As The Dental Solutions Company™, Dentsply Sirona's products provide innovative, high-quality and effective solutions to advance patient care and deliver better, safer and faster dentistry. Dentsply Sirona's global headquarters is located in York, Pennsylvania, and the international headquarters is based in Salzburg, Austria. The company's shares are listed in the United States on NASDAQ under the symbol XRAY.

Visit www.dentsplysirona.com for more information about Dentsply Sirona and its products.