

Catalogue



Simplify
the way you work

Contents

Diagnostics

3

Preparation

7

Cleaning

29

Filling

35

Kerr[™]

ENDODONTICS

Diagnostics



Apex ID®



Apex ID is compact and modern with unique functions that allow you to focus on what's really important; providing the best care for your patients.

User-set zero point

Customize the “zero point” based on your clinical judgment. No need to constantly monitor the visual display, the audible signal will let you know when you've reached your preferred zero point.

Accuracy in almost any condition

Apex ID has been designed to work in almost any canal condition. Whether dry, wet, bleeding, filled with saline, EDTA, NaOCl, chlorhexidine, the Apex ID can still provide accurate, consistent and dependable readings.

972-0090	(1) APEX ID, (1) APEX ID STAND, (5) LIP HOOKS, (2) FILE CLIPS, (1) FILE PROBE (1) PROBE CORD, (1) APEX ID IFU, (3) AAA 1.5V BATTERIES
972-0092	(5) APEX ID LIP HOOKS
972-0093	(2) FILE CLIPS
972-0094	(1) FILE PROBE
972-0095	(1) APEX ID PROBE CORD

Continuous calibration

Unlike most locators on the market today, Apex ID continuously calibrates for accurate, uninterrupted readings in real-time.

Elements™ Diagnostic Unit



The convenience and accuracy of a high quality pulp tester and an apex locator in one system. In addition, the satellite unit brings critical data into your field of vision.

A	973-0300	ELEMENTS DIAGNOSTIC UNIT (WITH SATELLITE)
A	973-0320	ELEMENTS DIAGNOSTIC UNIT (WITHOUT SATELLITE)
B	973-031	FILE CLIP
C	973-0307	BIFURCATED PROBE
D	973-0309	CROWN TEST TIP (DIAGNOSTIC UNIT ONLY)
E	973-0308	VITALITY PROBE (DIAGNOSTIC UNIT ONLY)
F	973-0313	LIP HOOK (5 PER PACK)
G	973-0311	ELEMENTS PATIENT LEAD CORD (FOR USE WITH SATELLITE)
H	973-0303	SATELLITE WITH SATELLITE CORD
	973-0304	ELEMENTS PATIENT LEAD CORD (WITHOUT SATELLITE)
		NOT ILLUSTRATED
	973-0302	CHARGE ADAPTER NOT ILLUSTRATED
	973-0305	BATTERY PACK NOT ILLUSTRATED

Preparation



TF[®] Adaptive System

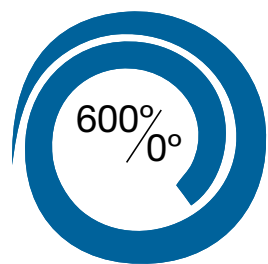
Adaptation in motion.

You're in control with the TF Adaptive System

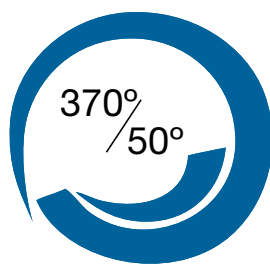
Adaptive Motion Technology is based on a patented, smart algorithm designed to work with the TF Adaptive File System. This technology allows the TF Adaptive file to adjust to intra-canal torsional forces depending on the amount of pressure placed on the file. This means the file is in either a rotary or reciprocation motion depending on the situation. The result is exceptional debris removal with our classic rotary Twisted File design and less chance of file pull-in with our Adaptive Motion Technology. Giving you exceptional file control through the entire procedure.



Adaptive Motion Technology



No load: 600° clockwise and 0° counter-clockwise file motion when no load is applied.



Loaded: 370° clockwise and up to 50° counterclockwise file motion when load is applied.

Keep it simple



An intuitive, colour-coded system designed for efficiency and ease of use. Just like a traffic light...start with green and stop with red.

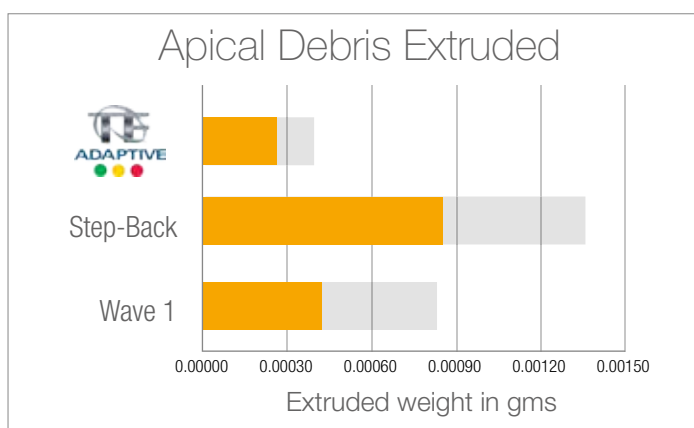
Elements Motor

6 Presets - provides recommended settings for TF Adaptive, K3/K3XF, TF, LightSpeed, M4 and a custom setting.



Peace of mind

The TF Adaptive File design is based on our clinically proven Twisted File technology, which means the file is twisted to shape for improved file durability, features R-Phase Technology to improve file flexibility and provides exceptional debris removal. With TF Adaptive and Adaptive Motion you get the best of both worlds.



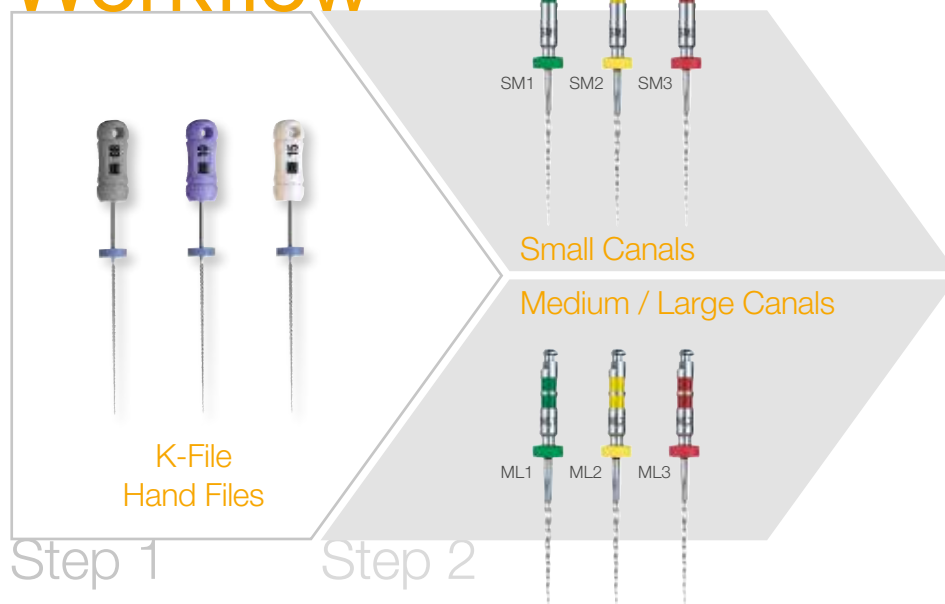
Study on Apical Debris Extrusion*

Compared with the TF Adaptive System, the Manual Step-Back technique generated 207% more debris from the apex than TF Adaptive while Wave One generated 59% more debris from the apex than TF Adaptive.

* Jaramillo, D. and Raydolfo, A. (2013) Comparison of the Extrusion of Dentin Debris Using a New Instrumentation. Publication pending.

TF Adaptive Technique

Workflow



Elements Motor

815-1502



ELEMENTS MOTOR WITH 8:1 CONTRA ANGLE

TF Adaptive Starter Kit

815-1531



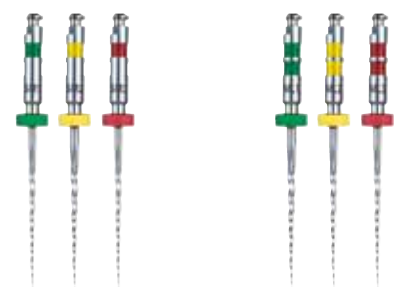
CONTAINS:	(1) ELEMENTS MOTOR W/ 8:1 CONTRA ANGLE
	5 PKS TF ADAPTIVE SMALL ASSORTED PACK IN 23 MM
	2 PKS TF ADAPTIVE SMALL ASSORTED PACK IN 27 MM
	5 PKS TF ADAPTIVE MEDIUM/LARGE ASSORTED PACK IN 23 MM
	2 PKS TF ADAPTIVE MEDIUM/LARGE ASSORTED PACK IN 27 MM
	2 PKS #8 K-FILES IN 25MM
	2 PKS #10 K-FILES IN 25MM
	2 PKS #15 K-FILES IN 25MM
	(1) LA AXCESS 2.0 BUR KIT

TF Adaptive Assorted Files



817-3003	TF ADAPTIVE SMALL PROCEDURE PACK 23MM
817-3007	TF ADAPTIVE SMALL PROCEDURE PACK 27MM
817-4003	TF ADAPTIVE MED/LRG PROCEDURE PACK 23MM
817-4007	TF ADAPTIVE MED/LRG PROCEDURE PACK 27MM

TF Adaptive Files



817-4203	TF ADAPTIVE FILE SM1 23MM (4 PCS)
817-4207	TF ADAPTIVE FILE SM1 27MM (4 PCS)
817-6253	TF ADAPTIVE FILE SM2 23MM (4 PCS)
817-6357	TF ADAPTIVE FILE SM2 27MM (4 PCS)
817-4353	TF ADAPTIVE FILE SM3 23MM (4 PCS)
817-4357	TF ADAPTIVE FILE SM3 27MM (4 PCS)
817-8253	TF ADAPTIVE FILE ML1 23MM (4 PCS)
817-8257	TF ADAPTIVE FILE ML1 27MM (4 PCS)
817-6353	TF ADAPTIVE FILE ML2 23MM (4 PCS)
817-5357	TF ADAPTIVE FILE ML2 27 MM (4 PCS)
817-4503	TF ADAPTIVE FILE ML3 23 MM (4 PCS)
817-4507	TF ADAPTIVE FILE ML3 27 MM (4 PCS)

TF Adaptive Paper Points



Pkg of 100

815-1570	TF ADAPTIVE PAPER POINTS SMALL YELLOW PACK - SM2
815-1571	TF ADAPTIVE PAPER POINTS SMALL RED PACK - SM3
815-1575	TF ADAPTIVE PAPER POINTS SMALL ASST PACK - SM2, SM3
815-1572	TF ADAPTIVE PAPER POINTS MEDIUM/LARGE GREEN PACK - ML1
815-1573	TF ADAPTIVE PAPER POINTS MEDIUM/LARGE YELLOW PACK - ML2
815-1574	TF ADAPTIVE PAPER POINTS MEDIUM/LARGE RED PACK - ML3
815-1576	TF ADAPTIVE PAPER POINTS MEDIUM/LARGE ASST PACK - ML1, ML2, ML3

TF Adaptive Gutta-percha



Pkg of 100

815-1540	TF ADAPTIVE GUTTA-PERCHA SMALL YELLOW PACK - SM2
815-1541	TF ADAPTIVE GUTTA-PERCHA SMALL RED PACK - SM3
815-1542	TF ADAPTIVE GUTTA-PERCHA SMALL ASST PACK - SM2, SM3
815-1543	TF ADAPTIVE GUTTA-PERCHA MEDIUM/LARGE GREEN PACK - ML1
815-1544	TF ADAPTIVE GUTTA-PERCHA MEDIUM/LARGE YELLOW PACK - ML2
815-1545	TF ADAPTIVE GUTTA-PERCHA MEDIUM/LARGE RED PACK - ML3
815-1546	TF ADAPTIVE GUTTA-PERCHA MEDIUM/LARGE ASST PACK - ML1, ML2, ML3

TF Adaptive Verifier



Pkg of 50

815-1552	TF ADAPTIVE VERIFIER SMALL YELLOW PACK - SM2
815-1553	TF ADAPTIVE VERIFIER SMALL RED PACK - SM3
815-1557	TF ADAPTIVE VERIFIER MEDIUM/LARGE GREEN PACK - ML1
815-1558	TF ADAPTIVE VERIFIER MEDIUM/LARGE YELLOW PACK - ML2
815-1559	TF ADAPTIVE VERIFIER MEDIUM/LARGE RED PACK - ML3

TF Adaptive Obturator



Pkg of 6

815-1550	TF ADAPTIVE OBTURATOR SMALL YELLOW PACK - SM2
815-1551	TF ADAPTIVE OBTURATOR SMALL RED PACK - SM3
815-1554	TF ADAPTIVE OBTURATOR MEDIUM/LARGE GREEN PACK - ML1
815-1555	TF ADAPTIVE OBTURATOR MEDIUM/LARGE YELLOW PACK - ML2
815-1556	TF ADAPTIVE OBTURATOR MEDIUM/LARGE RED PACK - ML3

Pkg of 36

BULK	
815-1560	TF ADAPTIVE BULK OBTURATOR SMALL YELLOW PACK - SM2
815-1561	TF ADAPTIVE BULK OBTURATOR SMALL RED PACK - SM3
815-1562	TF ADAPTIVE BULK OBTURATOR MEDIUM/LARGE GREEN PACK - ML1
815-1563	TF ADAPTIVE BULK OBTURATOR MEDIUM/LARGE YELLOW PACK - ML2
815-1564	TF ADAPTIVE BULK OBTURATOR MEDIUM/LARGE RED PACK - ML3

M4 Safety® and M4 TC2

Saves time, reduces fatigue.

Handpieces

Prior to using a rotating NiTi file, hand files are needed to prepare a glide path.

Manual filing can be tedious, especially when the canals are calcified.

The M4 Safety® and M4 TC2 handpieces are designed to guide hand files through the canals quickly, efficiently and effectively.

M4 Safety Handpiece

25846



M4 TC2 Handpiece

815-9142



Available for Type E motors or cordless TC motors.

The M4 Safety handpiece can be used with every Type E motor, while the M4 TC2 is designed for use with cordless TC motors.

Compatible with most hand files.

Both handpieces are fitted with a special coupling that is compatible with most hand files.

Imitates left and right rotation.

The coupling is designed to oscillate with the handpiece during filing and imitates fast left and right rotation.

Reduces fatigue significantly.

The file glides smoothly and efficiently through the canal using very slight apical pressure. The clinician controls the pressure without having to perform left and right rotation manually.

You will be delighted by the comfortable access, ease of operation, reduced fatigue and the efficiency of root canal preparation offered by the two handpieces – the M4 Safety and the M4 TC2.

TC2 Cordless Motor

Experience the freedom of cordless design.

EndoTouch TC2 by Kerr Endodontics is the generation of cordless motors. The TC2 is equipped with a large LCD display and easy 5-key operation.

The lightweight and ergonomic design ensures convenient and easy operation, even for the most difficult endodontic treatments. The automatic reversal and alarm functions indicate when the load is about to reach the pre-set torque level. This lets you reduce the load on the file before the auto reverse sets in. With the digital operating interface, changing the settings on the TC2 is even easier and more intuitive than before.

815-9141	TC2 KABELLOSER MOTOR
-----------------	----------------------

815-9124	ENDO TOUCH PUSH HEAD 16:1
-----------------	---------------------------

815-9125	ENDO TOUCH SWING LATCH HEAD 16:1
-----------------	----------------------------------

815-9142	M4 TC2 HANDPIECE
-----------------	------------------

763-4001	POWER CORD 230V UK
-----------------	--------------------

Small head with 6 position settings for convenient access to the entire oral cavity.

Large, flush-mounted ON/OFF key for simple operation.

Easy-to-read LCD display.

Convenient adjustment of speed, torque and other settings.

Easy-to-clean base for maximum infection control.

M4 TC2 Handpiece



Stainless Steel Files

K-Flex Files



K-Files



K-Flex® Files feature a unique rhomboid design, which provides a short axis for flexibility while maintaining crosssectional strength. K-Flex is more flexible than conventional “K” files of comparable size, particularly in sizes #30 and above, which facilitates the negotiation of curved canals and their preparation with minimal potential for ledging and perforating.

The K-File is the strongest of the handfiles with less separation potential. K-Files can bypass obstructions with far greater ease. They are designed to provide a smooth tactile feel during instrumentation.

K-Flex Files (pkg of 6)

Size	21 mm	25 mm	30 mm
80		15174	15258
70		15170	15254
60	15334	15166	15250
55	15330	15162	15146
50	15326	15158	15242
45	15322	15154	15238
40	15318	15150	15234
35	15314	15146	15230
30	15310	15142	15226
25	15306	15138	15222
20	15302	15134	15218
15	15298	15130	15214
10	15294	15126	15210
08	15290	15122	15206
06	60120	60144	60193
15-40 Asst	821-4021	821-4035	821-4030
45-80 Asst	15368	821-4125	821-4130

K-Files (pkg of 6)

Size	21 mm	25 mm	30 mm
80	06026	06099	06170
70	06024	06085	06166
60	06023	06077	06163
55	06022	06076	06162
50	06021	06075	06161
45	06020	06074	06160
40	06019	06069	06159
35	06016	06067	06157
30	06015	06066	06156
25	06014	06065	06155
20	06005	06064	06153
15	06004	06063	06152
10	06003	06062	06151
08	14127	14128	14129
06	62249	62250	62251
15-40 Asst	821-8021	821-8025	821-8030
45-80 Asst	821-8121	821-8125	821-8130

Triple-Flex Files



Hedstrom Files



Triple-Flex® Files are triangular-bladed, stainless steel instruments designed for flexibility with integrity. The twisted flutes allow the aggressive cutting and debris removal, then you demand without sacrificing the instrument's inherent stability. Triple-Flex Files are highly breakage resistant, even in the most stressful situations.

Hedstrom Files are ground from stainless steel wire. The flute depth increases with the taper, creating a sharper, more flexible instrument.

Triple-Flex Files (pkg of 6)

Size	21 mm	25 mm	30 mm
80	25941	25957	25973
70	25940	25956	25972
60	25939	25955	25971
55	25938	25954	25970
50	25937	25953	25969
45	25936	25952	25968
40	25935	25951	25967
35	25933	25949	25965
30	25932	25948	25964
25	25931	25947	25963
20	25930	25946	25962
15	25929	25945	25961
10	25928	25944	25960
08	25927	25943	25959
15-40 Asst	821-3021	821-3025	821-3030
45-80 Asst	821-3121	821-3125	821-3130

Hedstrom Files (pkg of 6)

Size	21 mm	25 mm	30 mm
70	12796	11354	13278
60	12793	11353	12841
55	12790	11352	12838
50	12787	11351	12835
45	12784	11350	12832
40	12781	11349	12829
35	12778	11348	12826
30	12775	11347	12823
25	12772	11346	12820
20	12769	11345	12817
15	12766	11344	12814
15-40 Asst	12809	11359	13291
45-80 Asst	12810	11360	13292

Hand Files

Reamers



Reamers are high quality, triangular bladed, stainless steel instruments designed to provide flexibility with integrity.

Reamers (pkg of 6)

Size	21 mm	25 mm	30 mm
45	06040	06132	61438
40	60038	06131	61437
35	06034	06127	61435
30	06033	06126	61434
25	06032	06120	61433
20	06031	06112	61432
15	06030	06111	61431
10	06029	06110	61430
08	14133	62260	62260
06	62252	62253	62254
15-40 Asst	821-2021	821-2025	61436

Pathfinder



Stainless steel Pathfinder™ instruments feature a minimal taper and are used for negotiating difficult or calcified canals.

Pathfinder (pkg of 6)

21 mm	25 mm
17023	17017

Pathfinder CS



Pathfinder®-CS-instruments feature the same minimal taper as stainless steel Pathfinders but are made with carbon steel to help negotiate difficult or calcified canals faster and more efficiently.

Pathfinder CS (pkg of 6)

Size	19 mm	21 mm	25 mm
K1	22935	22936	23465
K2	22937	22938	23467

TF Files

Modern design and finish

TF® (Twisted File) is the first and only file to employ unique and proprietary production technology that achieves unrivalled strength combined with flexibility.

R-Phase™ thermal treatment technology optimises the properties of NiTi files to give 70 % more flexibility and 2-3 times more resistance to cyclic fatigue than any other rotating file.¹

Being drilled rather than ground optimises the surface structure of NiTi, thus avoiding the accumulation of micro fractures. This process makes the file stronger; other endodontic files have cutting angles that are incorporated through grinding or milling, which damages the integrity of the metal and can lead to file breakage.

The advanced surface conditioning of the TF completes the surface treatment while respecting the integrity of the underlying grain structure.

Tests have demonstrated greater strength of the files.²

Tested performance

The TF was compared in numerous laboratory tests and rated as being stronger and more flexible than all other rotating files.

Studies on cyclic fatigue

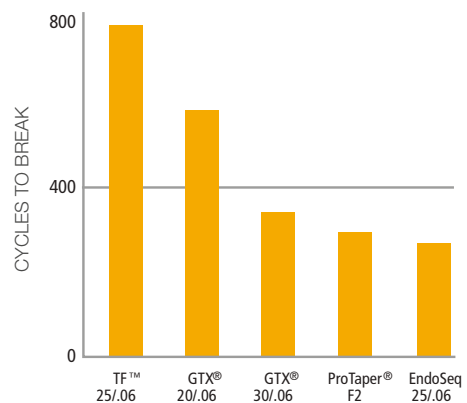
The TF performs 2-3 times better than conventional NiTi files and significantly better than the ProFile GTX.¹

Comparison of torsional elastic load

The TF absorbs the highest energy value prior to file breakage by a considerable margin. It can resist over 60 % more torsion than conventionally manufactured files.²



Comparison of cyclic fatigue¹



See TF in action at www.TFwithRPhase.com

1. Data on file, Sybron Dental Specialties, Inc. Data from Gambarini G., Garala M. Cyclic fatigue and flexibility testing.

2. Nicoll T, Oestreich L, Tang C, Ravi VA. Evaluation of product properties resulting from a new NiTi endodontic file manufacturing process. Chemical and Materials Engineering Department, California State Polytechnic University, 2006.

Simple 3-File Technique

Most NiTi files require a sequence of 5, 6 or more files. Not so the TF file.

The TF technique requires a maximum of 3 files per case, perfectly matched to the type of tooth you are treating; one set for the anterior teeth, another for the posterior teeth.

	STEP 1	STEP 2	STEP 3
ANTERIOR TEETH	.08 25	.06 30	.04 40
POSTERIOR TEETH	.08 25	.06 25	.06 30

TF Procedure Pack



TF PROCEDURE PACKS

Anterior teeth

TF PROCEDURE PACKS

Posterior teeth

822-3864 23 mm Taper Tip .08 25 .06 30 .04 40	822-7864 27 mm Taper Tip .08 25 .06 30 .04 40	822-3866 23 mm Taper Tip .08 25 .06 25 .06 30	822-7866 27 mm Taper Tip .08 25 .06 25 .06 30
--	--	--	--

TF Taper and Tip

Twisted files (3 pcs) Taper Tip 23 mm 27 mm .12 25 822-2253 .10 25 822-0253 822-0257 .08 25 822-8253 822-8257 .06 35 822-6353 822-6357 .06 30 822-6303 822-6307 .06 25 822-6253 822-6257 .04 50 822-4503 822-4507 .04 40 822-4403 822-4407 .04 25 822-4253 822-4257			
TF SMALL ASSORTED 822-4683 23 mm Taper Tip .08 25 .06 25 .04 25			
822-4687 27 mm Taper Tip .08 25 .06 25 .04 25			
TF LARGE ASSORTED 822-6803 23 mm Taper Tip .10 25 .08 25 .06 25			
822-6807 27 mm Taper Tip .10 25 .08 25 .06 25			
TF SMALL APICAL ASSORTED 822-8663 23 mm Taper Tip .08 25 .06 30 .06 35			
TF LARGE APICAL ASSORTED 822-6807 27 mm Taper Tip .06 30 .06 35 .04 40			

Every case is different, so that this recommendation for use is not a substitute for diagnosis and a treatment plan. The recommended technique should not replace professional assessment by the clinician.

K3™ Files

K3 Nickel Titanium Files

K3 is a third generation asymmetric endodontic file system. Designed to remove debris quickly, efficiently and safely, K3 addresses technical and procedural issues like no other ground-fluted file.

Variable pitch

Many files maintain a constant pitch (distance between the cutting edges) throughout the length of the file. This may result in a “screw-in” effect. The K3 file has a varied pitch that effectively transports debris coronally. This is important not only during initial cleaning and preparation but also for revisions.

Less friction, more stability

Alleviating pressure on the cutting edge of the radial surface of K3 files minimises frictional resistance. Other NiTi systems have wide radial lands that increase friction and can lead to breakage. K3 files have added mass to the cutting surface to provide greater support to prevent deformation. With other systems, blade rollover or cracks can occur during instrumentation.



K3 NiTi Files (pkg of 6)

Taper	Tip	17 mm	21 mm	25 mm
.12	25	830-2257	830-2251	830-2255
.10	25	830-0257	830-0251	830-0255
.08	25	830-8257	830-8251	830-8255

Taper	Tip	21 mm	25 mm	30 mm
.06	60	825-6601	825-6605	825-6600
.06	55	825-6551	825-6555	825-6550
.06	50	825-6501	825-6505	825-6500
.06	45	825-6451	825-6455	825-6450
.06	15-40 lajit	825-6021	825-6025	
.06	40	825-6401	825-6405	825-6400
.06	35	825-6351	825-6355	825-6350
.06	30	825-6301	825-6305	825-6300
.06	25	825-6251	825-6255	825-6250
.06	20	825-6201	825-6205	825-6200
.06	15	825-6151	825-6155	825-6150

Taper	Tip	21 mm	25 mm	30 mm
.04	60	825-4601	825-4605	825-4600
.04	55	825-4551	825-4555	825-4550
.04	50	825-4501	825-4505	825-4500
.04	45	825-4451	825-4455	825-4450
.04	15-40 lajit	825-4021	825-4025	
.04	40	825-4401	825-4405	825-4400
.04	35	825-4351	825-4355	825-4350
.04	30	825-4301	825-4305	825-4300
.04	25	825-4251	825-4255	825-4250
.04	20	825-4201	825-4205	825-4200
.04	15	825-4151	825-4155	825-4150

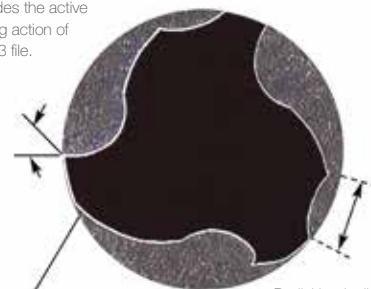
Taper	Tip	21 mm	25 mm	30 mm
.02	15-40 lajit	825-2021	825-2025	
.02	45	825-2451	825-2455	825-2450
.02	40	825-2401	825-2405	825-2400
.02	35	825-2351	825-2355	825-2350
.02	30	825-2301	825-2305	825-2300
.02	25	825-2251	825-2255	825-2250
.02	20	825-2201	825-2205	825-2200
.02	15	825-2151	825-2155	825-2150

K3 Procedure pack

830-0621		830-0625		830-0421		830-0425	
17 mm		17 mm		17 mm		17 mm	
Taper	Tip	Taper	Tip	Taper	Tip	Taper	Tip
.10	25	.10	25	.10	25	.10	25
.08	25	.08	25	.08	25	.08	25
21 mm		25 mm		21 mm		25 mm	
Taper	Tip	Taper	Tip	Taper	Tip	Taper	Tip
.06	40	.06	40	.04	40	.04	40
.06	35	.06	35	.04	35	.04	35
.06	30	.06	30	.04	30	.04	30
.06	25	.06	25	.04	25	.04	25

Is engineered for efficiency.

Positive rake angle provides the active cutting action of the K3 file.



Reduced radial land with blade support adds peripheral strength to resist torsional and rotary stresses.

The third radial land stabilizes and keeps the instrument centered in the canal and minimizes "over-engagement."

Radial land relief reduces friction on the canal wall.

K3 VTVT Package

830-7721		830-7725	
21 mm		25 mm	
Taper	Tip	Taper	Tip
.10	25	.10	25
.08	25	.08	25
.06	35	.06	35
.04	30	.04	30
.06	25	.06	25
.04	20	.04	20

EndoRing

The EndoRing offers a convenient method of holding endodontic instruments and lubricant. It features an easy-to-read ruler that allows quick setting of the files up to 30mm (in 0.5mm and 1mm increments) for left- and right-handed clinicians. The EndoRing and the foam inserts are autoclavable.



K3 G Package

830-9921		830-9925	
17 mm		17 mm	
Taper	Tip	Taper	Tip
.12	25	.12	25
21 mm		25 mm	
Taper	Tip	Taper	Tip
.10	25	.10	25
.08	25	.08	25
.06	25	.06	25
.04	25	.04	25
.02	25	.02	25

EndoRing Kit

825-0049

CONTAINS: 1 x REUSABLE GEL WELL

1 x NON-DISPOSABLE GEL WELL

4 x DISPOSABLE GEL WELLS

3 x FOAM INSERTS

825-0050 FOAM INSERTS (48 PIECES - 24 BLUE/24 YELLOW)

825-0051 DISPOSABLE GEL WELLS (24 PIECES)

K3XF

K3XF - all the features of K3. And more!

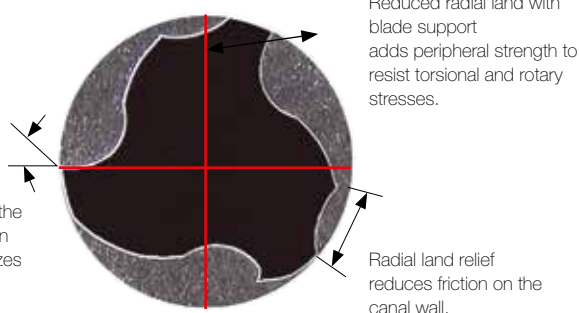


K3XF provides clinicians with the safety and self-centering features of the original K3 plus an extraordinary level of flexibility and resistance to cyclic fatigue provided by our proprietary R-Phase™ Technology. K3XF is the ultimate in safety, flexibility and control for rotary file users looking for a stronger and more flexible file.

K3XF is engineered for efficiency.

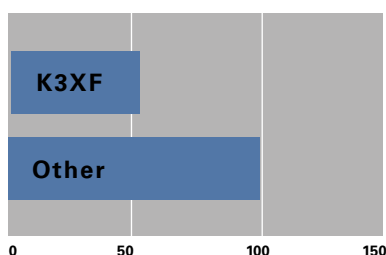
Positive rake angle provides the active cutting action of the K3 file.

The third radial land stabilizes and keeps the instrument centered in the canal and minimizes "over-engagement."



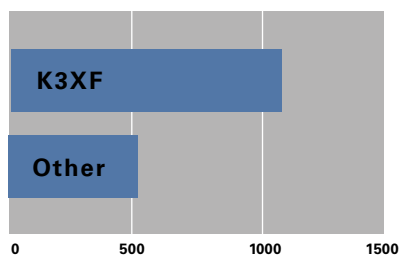
Half the stiffness, twice the resistance to fracture

STIFFNESS



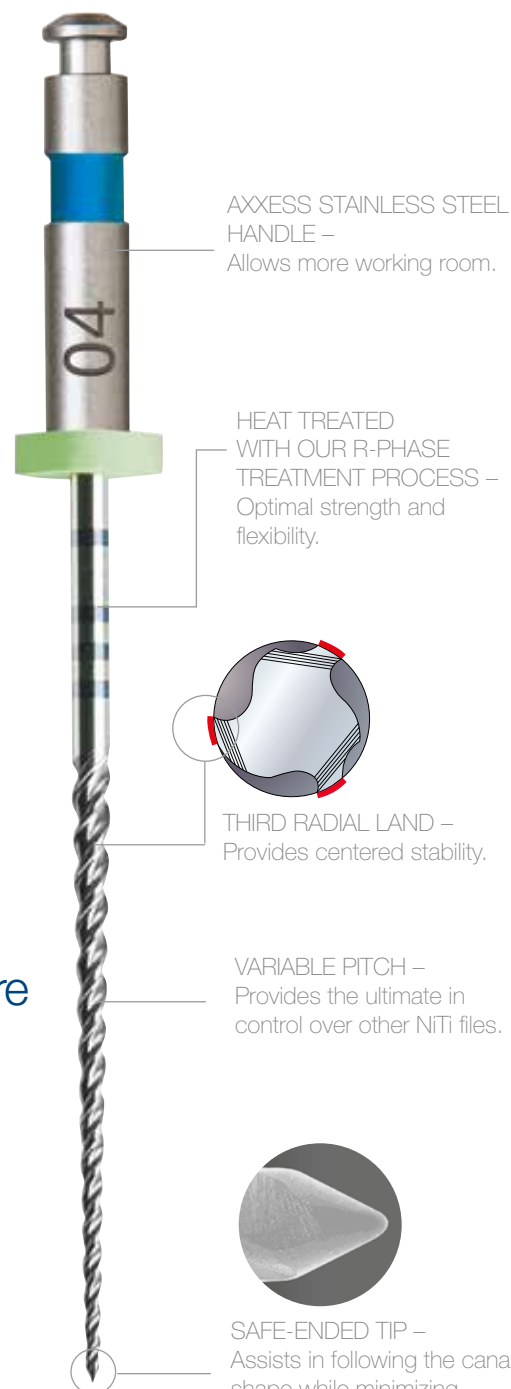
GmCm(-1)

FRACTURE RESISTANT



Cycles to fracture

Int Endod J. 2011 Jan 10. doi: 10.1111/j.1365-2591.2010.01835.x. [Epub ahead of print] Mechanical properties of nickel-titanium rotary instruments produced with a new manufacturing technique. Gambarini G, Plotino G, Grande NM, Al-Sudani D, De Luca M, Testarelli L.



K3XF is available as a complete system with matching gutta-percha and paper point.

"K3 XF felt smoother, cutting with less torsional feedback at the handpiece, making it possible to penetrate deeper inside the canal."

K3XF

K3XF Nickel-Titanium Files (pkg of 6)

Taper	Tip	17mm	21mm	25mm	30mm
.12	40	823-2407	823-2401	823-2405	823-2400
.12	30	823-2307	823-2301	823-2305	823-2300
.12	25	823-2257	823-2251	823-2255	823-2250
.12	20	823-2207	823-2201	823-2205	823-2200
.10	40	823-0407	823-0401	823-0405	823-0400
.10	30	823-0307	823-0301	823-0305	823-0300
.10	25	823-0257	823-0251	823-0255	823-0250
.10	20	823-0207	823-0201	823-0205	823-0200
.08	40	823-8407	823-8401	823-8405	823-8400
.08	30	823-8307	823-8301	823-8305	823-8300
.08	25	823-8257	823-8251	823-8255	823-8250
.08	20	823-8207	823-8201	823-8205	823-8200
.06	60		823-6601	823-6605	823-6600
.06	55		823-6551	823-6555	823-6550
.06	50		823-6501	823-6505	823-6500
.06	45		823-6451	823-6455	823-6450
.06	40		823-6401	823-6405	823-6400
.06	35		823-6351	823-6355	823-6350
.06	30		823-6301	823-6305	823-6300
.06	25		823-6251	823-6255	823-6250
.06	20		823-6201	823-6205	823-6200
.06	15		823-6151	823-6155	823-6150
.06	15-40 Asst		823-6021	823-6025	
.04	60		823-4601	823-4605	823-4600
.04	55		823-4551	823-4555	823-4550
.04	50		823-4501	823-4505	823-4500
.04	45		823-4451	823-4455	823-4450
.04	40		823-4401	823-4405	823-4400
.04	35		823-4351	823-4355	823-4350
.04	30		823-4301	823-4305	823-4300
.04	25		823-4251	823-4255	823-4250
.04	20		823-4201	823-4205	823-4200
.04	15		823-4151	823-4155	823-4150
.04	15-40 Asst		823-4021	823-4025	

K3XF Files & Obturation



K3XF Obturators (pkg of 6)

Tip	
60	971-3060
55	971-3055
50	971-3050
45	971-3045
40	971-3040
35	971-3035
30	971-3030
25	971-3025
20	971-3020

K3XF Verifiers (pkg of 6)

Tip	
60	971-3160
55	971-3155
50	971-3150
45	971-3145
40	971-3140
35	971-3135
30	971-3130
25	971-3125
20	971-3120

K3XF Autofit Paper Points (pkg of 100)

Taper	
.04	971-1110
.06	971-1111
.08	971-1112
.10	971-1115
.12	971-1116
.04 - .12 Asst	971-1113

K3XF gutta-percha Points (pkg of 50)

Taper	Tip	
.04	45	825-0445
.04	40	825-0440
.04	35	825-0435
.04	30	825-0430
.04	25	825-0425
.04	20	825-0420
.04	20-40 Asst	825-0400
.04	FeatherTip	825-0047
Taper	Tip	
.06	45	825-0645
.06	40	825-0640
.06	35	825-0635
.06	30	825-0630
.06	25	825-0625
.06	20	825-0620
.06	20-40 Asst	825-0600
.06	FeatherTip	825-0048
.08	FeatherTip	971-1117
.10	FeatherTip	971-1118

K3XF Procedure Pack (pkg of 6)

17mm	17mm	17mm	17mm
Taper Tip	Taper Tip	Taper Tip	Taper Tip
.10 25	.10 25	.10 25	.10 25
.08 25	.08 25	.08 25	.08 25
21mm	25mm	21mm	25mm
.06 40	.06 40	.04 40	.04 40
.06 35	.06 35	.04 35	.04 35
.06 30	.06 30	.04 30	.04 30
.06 25	.06 25	.04 25	.04 25

K3XF G Pack (pkg of 5)

17mm	17mm
Taper Tip	Taper Tip
.12 25	.12 25
21mm	25mm
.10 25	.10 25
.08 25	.08 25
.06 25	.06 25
.04 25	.04 25

LightSpeed



LightSpeed instruments feature considerably shortened working length of between just 0.25 to 1.75mm, depending on the size of the instrument. The existing range covers sizes from 20-160. This enables optimal preparation of the root canal at the apex. The constant optimal speed is within the range between 750-2500 rpm and is thus considerably higher than for all other rotating NiTi instruments.

The instrument tip consists of a Batt tip, a U-shaped cross-section and wide lateral guide surfaces. As instrument size increases, the working length becomes longer and the pitch of the Batt tip smaller. The cutting surfaces form a neutral angle to the canal wall. The long, slim shaft of the instrument guarantees a high level of flexibility, even for files with larger diameters.

Due to their special design, every LightSpeed file has only marginal contact with the canal wall, reducing friction in the canal considerably. Initial preparation is at working length and then finished by applying the step-back technique to increase the taper.

For further processing we recommend SimpliFill for filling the root canal and our TF Adaptive Element motor, where the speed is pre-set to LightSpeed.

LightSpeed LSX 6 Stck.

Size	21 mm	25 mm	31 mm	31 mm
20	835-2021	835-2025	835-2031	
25	835-2521	835-2525	835-2531	
30	835-3021	835-3025	835-3031	
35	835-3521	835-3525	835-3531	835-3550
40	835-4021	835-4025	835-4031	835-4050
45	835-4521	835-4525	835-4531	835-4550
50	835-5021	835-5025	835-5031	835-5050
55	835-5521	835-5525	835-5531	835-5550
60	835-6021	835-6025	835-6031	835-6050
65	835-6521	835-6525	835-6531	835-6550
70	835-7021	835-7025	835-7031	835-7050
80	835-8021	835-8025	835-8031	835-8050
90	835-9021	835-9025	835-9031	835-9050
100	835-0021	835-0025	835-0031	835-0050
110		835-1025	835-1031	835-1050
120		835-1225	835-1231	835-1250
130		835-1325	835-1331	835-1350
140		835-1425		835-1416

LightSpeed LSX Assorted

Size	21 mm	25 mm	31 mm	31 mm
20-45	835-2451	835-2455	835-2453	835-3555
50-80	835-5801	835-5805	835-5803	835-6090
90-130		835-9145	835-9133	835-1013
140-160			835-1463	835-1416

Ultrasonic



MiniEndo II

The MiniEndo II is a compact ultrasonic unit designed specifically to apply the appropriate amount of power to complete endodontic procedures successfully.

763-1001 MINIENDO II ULTRASONIC UNIT TYPE S, 220V WITH HANDPIECE



973-0096 WRENCH FOR ULTRASONIC TIPS

973-0201 MINIENDO HANDPIECE (M3X.6) TYPE S

Ultrasonic Tips Introductory kit

The introductory kit is the ideal introduction to ultrasonic technology. Each kit contains an SP-2, scaler, CT-4 and diamond-coated CT-4 attachment.

973-1000 ULTRASONIC TIPS INTRODUCTORY KIT



The «4» series

The «4» series is used to remove metal root canal posts. Kerr recommends that the clinician begins at level one and increases according to his personal comfort level.



973-0039 UT-4

973-0041 SJ-4

973-0057 CT-4

Spreader tips

Longer than the «4» series, the Spreader tips are used for canal troughing. Spreader tips are geared for troughing around root canal posts and removing them, as well as for opening calcified canals. They can also be used to remove broken files in the apical third of the canal.

973-0063	SP-1 SMALL SPREADER TIP
973-0065	SP-2 MEDIUM SPREADER TIP
973-0067	SP-3 ULTRA-FINE SPREADER TIP



BK-3 Tips

Surgical BK-3 tips have three curves for easy access to all root canal preparations, including MB-2 canals. BK-3 offers excellent visibility and you can finish an entire preparation with one tip. Water is directed down the three curves to reach the surgical site. They are suitable for any application.

973-0110	BK-3 UPPER RIGHT/LOWER LEFT TIP
973-0112	BK-3 UPPER LEFT/LOWER RIGHT TIP



Special tips

973-0074	ST
----------	----

This tip is used to remove cement or calculus. The ST-1 is similar to the CT-4, except it is curved in such a way as to achieve better access in difficult-to-reach tooth structures.

973-0069	VT
----------	----

The attachment was developed to loosen root canal posts as well as crowns or bridges, or for placing crowns.

973-0061	CK
----------	----

The Carr-Kanter back-action ultrasonic tip is ideal for performing difficult work, i.e. the preparation of MB-2 canals.



UT Attachments

973-0033 UT-1 INITIATING TIP

Straight-line tip with 90° angle to initiate the preparation.

973-0035 UT-2 UNIVERSAL RIGHT TIP

Angled tip for use on the upper right and lower left to finish the preparation.

973-0037 UT-3 UNIVERSAL LEFT TIP

Angled tip for use on the upper left and lower right to finish the preparation.



SJ Tips

973-0084 SJ-1 INITIATING TIP

Straight-line tip with 90° angle to initiate the preparation.

973-0078 SJ-2 SLIM JIM «RIGHT» TIP

Angled tip for use on the upper right and lower left to finish the preparation.

973-0080 SJ-3 SLIM JIM «LEFT» TIP

Angled tip for use on the upper left and lower right to finish the preparation.



Diamond-Coated Ultrasonic Tips

Our most popular ultrasonic tips are also available with a diamond coating, which improves durability and removal efficiency.

973-1057	CT-4 STRAIGHT-LINE TIP (THE MOST POPULAR)
973-1059	CT-1 INITIATING TIP
973-1053	CT-2 RIGHT TIP
973-1054	CT-3 LEFT TIP
973-1039	UT-4 STRAIGHT-LINE TIP
973-1060	CK CARR-KANTER BACK-ACTION TIP
973-1065	SP-2 MEDIUM SPREADER TIP
973-1110	BK3-R UPPER RIGHT/LOWER LEFT TIP
973-1111	BK3-L UPPER LEFT/LOWER RIGHT TIP



CT Attachments

973-0059 CT-1 INITIATING TIP

Straight-line tip with 90° angle to initiate the preparation.

973-0053 CT-2 STANDARD ATTACHMENT RIGHT

Angled tip for use on the upper right and lower left to finish the preparation.

973-0055 CT-3 STANDARD ATTACHMENT LEFT

Angled tip for use on the upper left and lower right to finish the preparation.



File Adapter

The File adapter is used with NiTi or K-Files (sizes 15 -35) without a handle and can be inserted into the chuck. It activates the irrigant in the canal, thereby increasing the effect of irrigation by acoustic streaming.

973-0031 FILE ADAPTER



RedStar Attachments

RedStar tips provide a wide range of functionality and efficiency, and are suited for both novice clinicians and expert specialists. Developed in collaboration with Dr. Richard Mounce, these tips were designed with safety in mind and for a broad range of applications.

973-1040 REDSTAR-1 SPREADER TIP

- For removing cement around root canal posts.
- Opens calcified canals.
- Removes isthmus tissue.

973-1041 REDSTAR-2 PLANING TIP

- Safely and smoothly removes pulp stones from the pulp chamber without scoring and cutting too deeply.
- Smooths the axial walls and floor of the pulp chamber.
- Shaves thin layers of dentine without cutting too deeply.



RedStar-1

RedStar-2

Cleaning



EndoVac

Safety

EndoVac pulls irrigant deep into the canal and evacuates it through the suction holes, so you do not run the risk of pushing sodium hypochlorite beyond the apical foramen.

“This study concluded that the EndoVac did not extrude irrigant after deep intracanal delivery and suctioning the irrigant from the chamber to full working length”

⁶ – J Endod 2009;35:545-549.

Efficacy

EndoVac enables irrigation to FULL WL, so you can finally reach those last few, critical 3-4 mm that are often left untouched.

“This study showed significantly better debridement 1 mm from working length using the EndoVac system compared with needle irrigation”

– J Endod 2007;33:611-615.

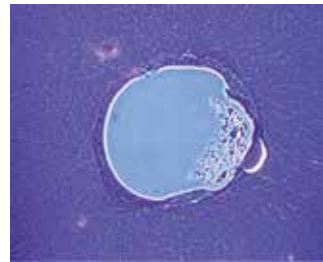
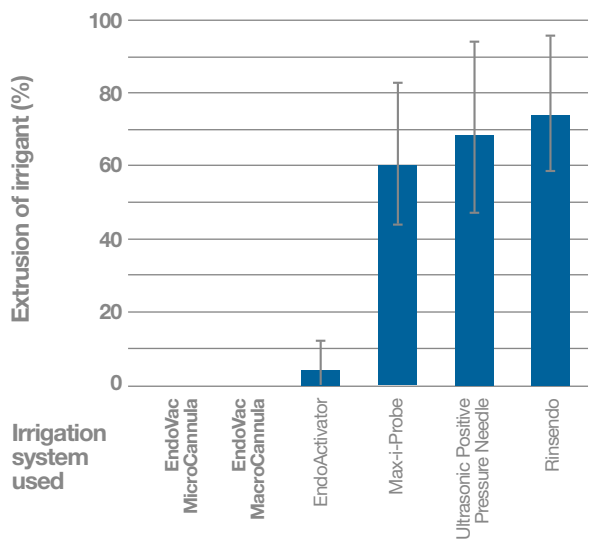
Success

EndoVac creates a powerful current force to pump disinfecting irrigants throughout the entire canal system, so pain-inducing bacteria are destroyed more quickly and effectively.

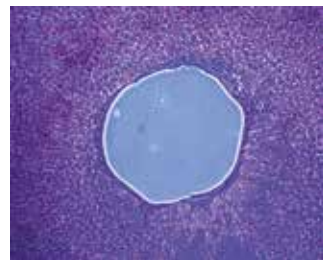
In conclusion, the negative apical pressure irrigation system EndoVac resulted in significantly less postoperative pain and necessity for analgesic medication than a conventional needle irrigation protocol using the Max-i-Probe[®]

– J Endod 2010;36:1295-1301.

Comparative Safety of Various Intracanal Irrigation Systems



Demonstrates significant residual instrumentation debris.



Demonstrates clean root canal walls and lumen.

These cross-sections were taken 1 mm from WL

„Since introduction the EndoVac system has become indispensable in our practice.“

– Dr. Sabine Remensberger, Memmingen

EndoVac Starter Kit



973-3036	KIT
CONTAINS:	
	1- MULTI-PORT ADAPTER,
	1- HANDPIECE/FINGERPIECE SET,
	1 EVACUATION TUBING SET,
	5- MACROCANNULAS,
	5- MICROCANNULAS (25MM),
	5- MASTER DELIVERY TIPS,
	6- 20CC SYRINGES FOR NAOCL,
	6- 3CC SYRINGES FOR EDTA, INSTRUCTIONS FOR USE, QUICK SETUP GUIDE

EndoVac Accessories

973-3004	ENDOVAC MULTI-PORT ADAPTER
973-3018	FINGERPIECE/HANDPIECE SET
973-3021	SINGLE ENDOVAC HANDPIECE
973-3022	SINGLE ENDOVAC FINGERPIECE
973-3005	EVACUATION TUBING (CONTAINS 2 TUBES: MACRO/MICRO & MDT)
973-3012	MASTER DELIVERY TIPS (5 PK) AUTOCLAVABLE
973-3013	MASTER DELIVERY TIPS (20 PK) AUTOCLAVABLE

EndoVac Cannulas



973-3020	25MM MACROCANNULAS (5 PK)
973-3027	25MM MACROCANNULAS (20 PK)
973-3025	21MM MICROCANNULAS (5 PK)
973-3014	21MM MICROCANNULAS (20 PK)
973-3019	25MM MICROCANNULAS (5 PK)
973-3026	25MM MICROCANNULAS (20 PK)
973-3024	31MM MICROCANNULAS (5 PK)

EndoVac is a true apical negative pressure irrigation system.

Instead of applying positive pressure, EndoVac uses suction to PULL irrigant down the root canal (Figure A), and then up and away into the Hi-Vac suction unit. We call this “negative apical pressure,” because EndoVac applies suction rather than forceful injection (Figure B) to consistently deliver a perfect, bullet-proof performance. Only Kerr Endodontics brings you this patented EndoVac technology that enables you to provide the gold standard of endodontic care to every one of your patients.

1. The Multiport-Adapter (MPA)

plugs directly into your office Hi-Vac and serves as a caddy for the EndoVac tubing and other components. It is autoclavable for easy sterilization, and is easily removed and re-attached to the Hi-Vac system for maximum portability between operatories.

2. The Master Delivery Tip (MDT)

plugs directly into the blue port of the MPA and provides a constant flow of irrigant without the risk of overflow. The MDT is used during coronal flaring and after each instrument change to remove gross debris arising from instrumentation.

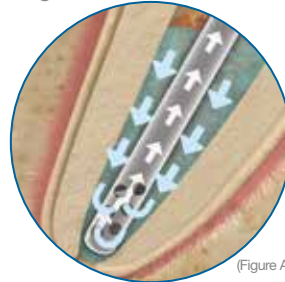
3. The MacroCannula

is used to remove coarse debris inside the canal after all instrumentation is completed. In this step, the MacroCannula and the MDT are used at the same time. It is helpful to have a dental assistant deliver the irrigant with the MDT while the clinician works the MacroCannula up and down each canal.

4. The MicroCannula

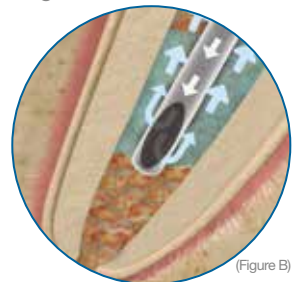
is a 28 gauge needle (0.32 mm) with 12 laser-drilled, microscopic evacuation holes – each less than 100 microns in size – placed at the end of the needle. Fluid is drawn to the apical termination through these holes, creating a vortex-like cleaning of the apical third.

Negative Pressure Irrigation



(Figure A)

Positive Pressure Irrigation



(Figure B)

The EndoVac MicroCannula reaches full working length (WL), drawing irrigant into the last few, critical millimeters of the root canal.

A traditional irrigation needle is placed 3-4 mm short of WL, for fear of binding and potentially extruding irrigant beyond the apical foramen. Note that irrigant does not reach the last few millimeters.



The MDT's unique design:

1. Prevents excess sodium hypochlorite from spilling into the patient's mouth, regardless of arch.
2. Provides frequent and abundant flow of irrigant while maintaining the desired effect of a constant "brim full" level of irrigant.



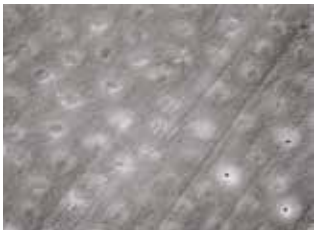
The EndoVac MDT delivers irrigant coronally.

The EndoVac MacroCannula pulls irrigant into the canal and evacuates gross debris.

SmearClear

Successful endodontic therapy requires a clean and clear root canal system. The improved EDTA SmearClear formula addresses this issue by consistently removing the smear layer and leaving the dentinal tubules clear of organic matter.

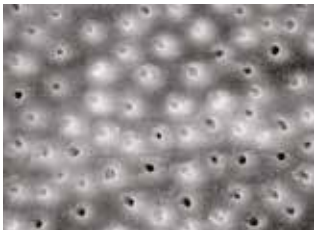
The practitioner will immediately recognise an increase in the efficacy of the adhesive system, as well as an improvement in the 3-dimensional obturation of the root canal system.



5,25% NaOCl



SmearClear



17% EDTA

Photos (200x) show the dentinal tubules after instrumentation, exposure to NaOCl and further 1-minute exposure to EDTA liquid as well as rinsing with SmearClear. Photos and the study courtesy of Drs. J. Jantararat, K. Yanpiset and C. Hamirattisai.



973-1002

SMEARCLEAR LIQUID REFILL

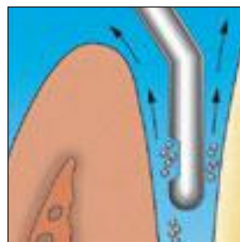
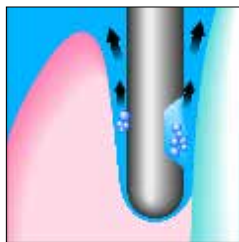
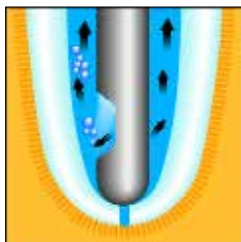
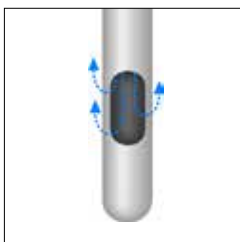
SlickGel™ ES

973-1015 SlickGel™ ES pack, 12 MicroDose® polytube (1ml each)

SlickGel™ ES is a specially formulated water-based canal lubrication to aid the preparation of root canals with endodontic instruments. Each MicroDose® polytube contains EDTA that chelates calcifications in the root canal system. Sodium hypochlorite irrigants react with SlickGel ES's urea peroxide to produce a vigorous bubbling action that helps to flush debris from the root canal system.



Recomended to use with Irrigation Probe (Kerr)



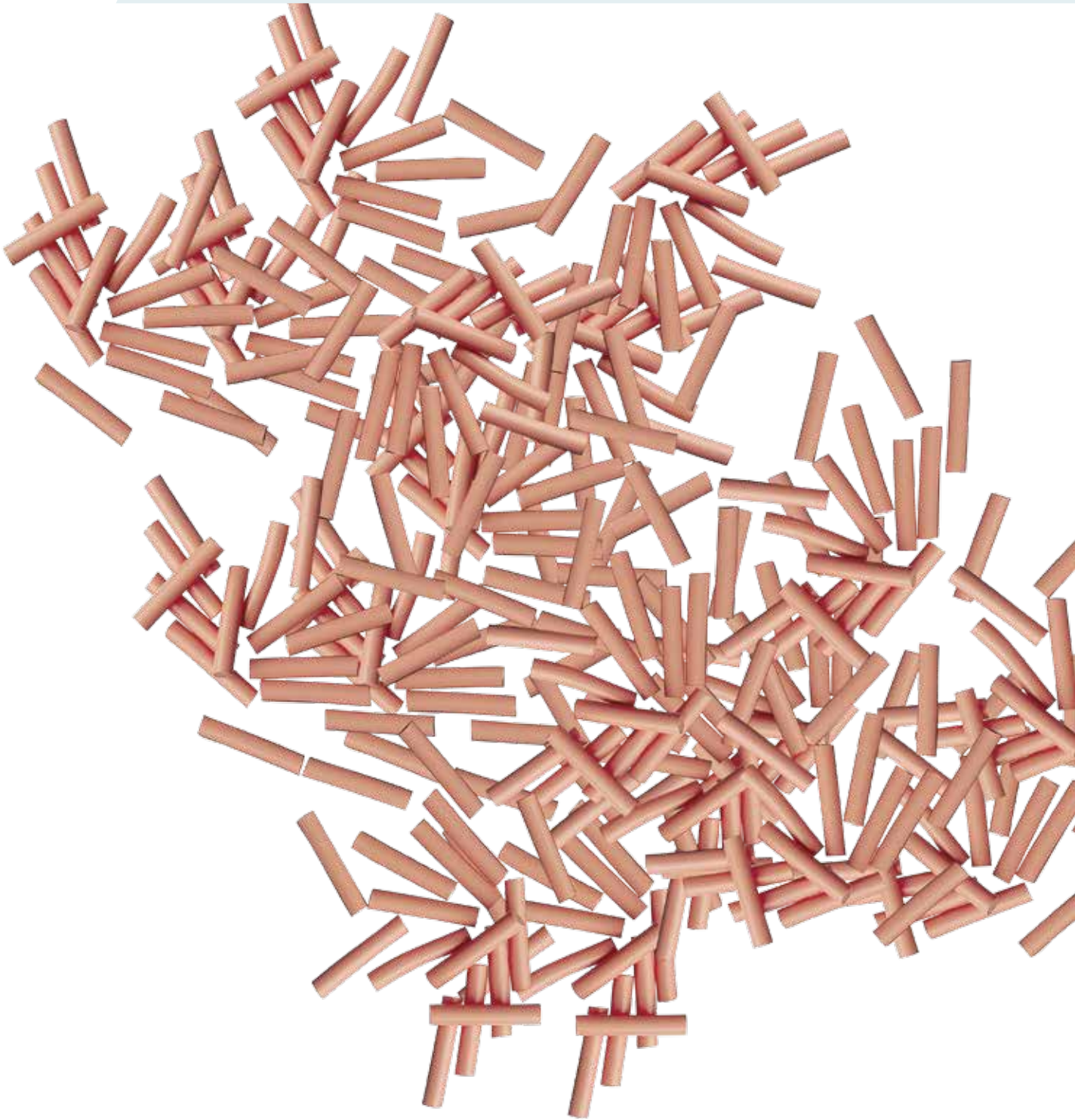
502 GAUGE NO. 21 Ø 0.8 MM GREEN (0.8 MM X 25 MM), 40 PCS

503 GAUGE NO. 23 Ø 0.6 MM BLUE (0.6 MM X 25 MM), 40 PCS

504 GAUGE NO. 25 Ø 0.5 MM ORANGE (0.5 MM X 25 MM), 40 PCS

505 GAUGE NO. 30 Ø 0.3 MM YELLOW (0.3 MM X 25 MM), 40 PCS

Filling



Powered obturation with no strings attached

Innovative

Ready to go when you're ready to go...

- Downpack unit heats to 200°C in less than 0.5 seconds and with an adjustable heating range of 100°-400°C
- 360° activation ring to improve your experience
- Digital temperature control for procedural accuracy
- Perfect for Continuous WaveTM and single motion downpack obturation

Breakthrough

Powered obturation, no strings attached...

- Swiss motor and gear drive for high level performance
- Motorized extrusion for less hand fatigue
- Single-use cartridges with built-in finger grips for ease of use
- Aerogel insulation surrounds the heating element for your comfort and your patient's safety

Unleashed

- Predictable results: high quality 3D fill
- Ease of use: motor driven extruder for better control and tactile feel
- Intuitive: Easy set up, friendly handling, full control for safe results



Dual Charging Base



Single Charging Base

Elements Obturation Unit

The Elements Obturation Unit combines our System B™ technology with a motor-driven handpiece to achieve effective, predictable and accurate obturation. From down-pack to back-fill, the Elements obturation unit combines the 'Continuous Wave of Condensation' technique in one simple-to-operate device that only takes up one-third of the space required for the two traditional machines.



Elements Obturation Unit

973-0322

973-0326	(1) EXTRUDER HANDPIECE (W/2 SHIELDS)
973-0327	(1) SYSTEM B HANDPIECE (W/2 SHIELDS)
973-0329	(2) EXTRUDER HANDPIECE SILICONE BOOTS
973-0330	(2) SYSTEM B HANDPIECE SILICONE BOOTS
973-0331	(2) EXTRUDER HANDPIECE SHIELD
973-0332	(2) SYSTEM B HANDPIECE SHIELD
973-0333	POWER SUPPLY (TRANSFORMER)
973-0335	AC POWER CORD, EUROPE

Elements Obturation Unit

Features and Benefits

- One-touch controls for downpack, backfill and hot pulp testing
- Each function has preset temperature and duration
- Tip temperature is continuously maintained and displayed
- Time-out feature prevents overheating
- Automatic shut-off precludes using wrong or worn-out tip
- Plugger heats instantly for immediate use

Extruder

- Motorized handpiece eliminates hand fatigue and precludes voids
- Pencil-grip handpiece enhances control and fits standard handpiece holders
- Precise temperature control for consistency
- Extra-long prebent needles offer convenience and unprecedented visibility
- Heats quickly and shuts off automatically
- Handpiece shows remaining material



Handpieces

- Plugger and extruder handpieces are lightweight, strong and durable
- Insulation technology keeps handpieces cool for you and the patient
- Aluminum shields minimize downtime – use one while autoclaving the other

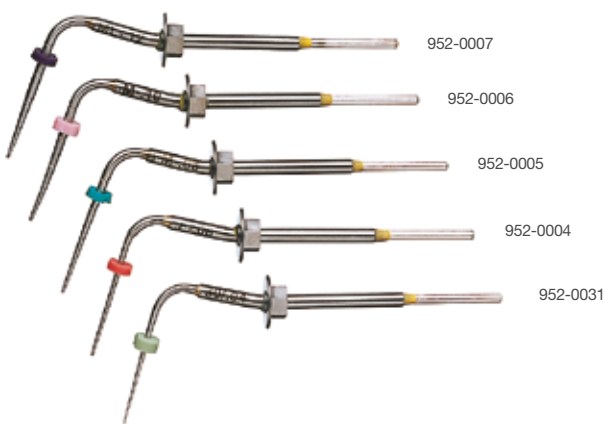
Elements Obturation Unit gutta-percha Cartridges (Pkg of 10)

972-1002	GAUGE 23 (MEDIUM BODY)
972-1005	GAUGE 23 (HEAVY BODY)
972-1003	GAUGE 25 (LIGHT BODY)
<hr/>	
972-2002	GAUGE 23 (MEDIUM BODY)
973-0337	TOOL FOR BENDING NEEDLES

Buchanan Heat Plugger

These high-quality pluggers are shaped to closely match the final root canal preparation. This maximises condensation forces on the softened obturation material without placing undue stress on the root canal system.

As the Elements Obturation Unit and the System B unit maintain a constant temperature during treatment, the obturation material is not over-softened by the Buchanan plugger and the warm mass fills lateral canals as easily as it seals apically. When you disengage the heat, the pluggers cool instantly and can therefore be separated easily from the obturation material.



Buchanan Hand Plugger

Featuring both a tapered NiTi end and a stainless steel end, Buchanan hand pluggers can be used in all common obturation techniques, including warm and cold condensation. The pluggers are also ideal for back-filling canals. Use the colour-coded NiTi end for finishing condensation procedures, even in the most radically curved canals. Both ends condense and control the gutta-percha. The Buchanan hand pluggers are made to provide a long service life despite sterilisation and heavy use.



952-0003	BUCHANAN PLUGGER (5 PER PACK)
952-0007	MEDIUM-LARGE, 0,12 PLUGGER
952-0006	MEDIUM, 0,10 PLUGGER
952-0005	FEIN-MEDIUM, 0,08 PLUGGER
952-0004	FEIN, 0,06 PLUGGER
952-0031	EXTRA-FEIN, 0,04 PLUGGER

Autofit Paper Points™

Developed by Dr. L. Stephen Buchanan, the Autofit Paper Points™ are an integral part of the Autofit system. The tapers of various sizes are colour-coded for easy identification and will fit perfectly into Greater Taper preparations.

Assorted tapers

(100 pcs per pack)

Taper	Tip Ø
.12	972-0115
.10	972-0114
.08	972-0113
.06	972-0112
.04	972-0111
FederPunta	972-0110



Absorbent paper points

Kerr Endodontics's absorbent paper points are sterile and highly absorbent. They are used for removing moisture from prepared canals and are stiff enough to be inserted into the canal and then removed without losing their shape. The sizes correspond to the dimensions of the standardised Kerr Endodontics endodontic instruments.

Non-standardised sizes

200 pcs per pack

X-FEIN (XF)	13966
FEIN (F)	13967
MEDIUM (M)	13968
COURSE (C)	13969
X-COURSE (XC)	13970
ASSORTIERT (XF, F, M, C)	13965
ASSORTIERT (XF, F, M, C, XC)	16221

Standard sizes

200 pcs per pack

NR. 15	13971
NR. 20	13972
NR. 25	13973
NR. 30	13974
NR. 35	13975
NR. 40	13976
NR. 45	13977
NR. 50	13978
NR. 55	13979
NR. 60	13980
NR. 70	13981
NR. 80	13982

Gutta-Percha

K3 gutta-percha

(50 pcs per pack)

Taper	Tip Ø				
.06	45	825-0645	.04	45	825-0445
.06	40	825-0640	.04	40	825-0440
.06	35	825-0635	.04	35	825-0435
.06	30	825-0630	.04	30	825-0430
.06	25	825-0625	.04	25	825-0425
.06	20	825-0620	.04	20	825-0420
.06	20-40 assort.	825-0600	.04	20-40 assort.	825-0400
.06	FederPunta	825-0048	.04	FederPunta	825-0047



TF gutta-percha and paper points (pre-sterilised) are fabricated specifically for use with the TF rotating NiTi files.

TF-gutta-percha

Pack of 50

TF-Paper points

Pack of 50

Taper	Tip Ø		Tip	
.12	25	822-1225	.12	822-0002
.10	25	822-1025	.10	822-0001
.08	25	822-0825	.08	822-0008
.06	25	822-0625	.06	822-0006
.04	25	822-0425	.04	822-0004
.06	30	822-0630	.04-.12 assort.	822-0000
.06	35	822-0635		
.04	40	822-0440		
.04	50	822-0450		
.04-.12 assort.	25	822-0010		
.04-.12 assort.	25	822-0020		

Autofit gutta-percha

(50 pcs per pack)

972-0100 TAPER 06-12

972-0101 TAPER 04

972-0102 TAPER 06

972-0103 TAPER 08

972-0104 TAPER 10

972-0105 TAPER 12L

972-0107 TAPER 12S



Tip Snip

815-9042

Using a measurement dial, the Tip Snip™ cuts gutta-percha to the ISO size needed.



Xpress Sealer

An application system is available for Kerr Endodontics's three traditional sealants to help simplify set up, delivery and clean up. Sealapex®, Tubli-Seal™ and TubliSeal™ EWT are now available in automix syringes. These syringes offer easy mixing at a perfect 1:1 ratio. This application system adds efficiency, convenience and simplicity to proven, well-established products.

33639	SEALAPEX XPRESS (2 – 10.5 G SYRINGES)
33640	TUBLI-SEAL XPRESS (2 – 10.7 G SYRINGES)
33641	TUBLISEAL EWT XPRESS (2 – 10.8 G SYRINGES)
33680	50 MIXING TIPS



Sealapex

Sealapex® is the original eugenol-free root canal sealant based on calcium hydroxide, which promotes rapid healing and the formation of hard tissue.

18432	SEALAPEX
18589	LARGE PACK CONTAINS: 24 SETS OF BASE AND ACCELERATOR, 6 MIXING PADS



Tubli-Seal

Tubli-Seal™ is a paste/paste zinc oxide eugenol root canal sealant. It is light in colour, non-darkening and radiopaque.

00340	TUBLI-SEAL
-------	------------



Tubli-Seal EWT

Tubli-Seal™ EWT offers all the benefits of Tubli-Seal but with a longer processing time.

25903	TUBLI-SEAL EWT
28366	Mixing pads

Simpliseal

972-0082 SimpliSEAL root canal sealer

SimpliSeal is a paste/paste, dual-component root canal sealant delivered in a convenient dual barrel syringe.

The epoxy resin sealant properties include:

- Excellent handling characteristics
- Outstanding chemical and physical properties
- Biocompatibility



Pulp Canal Sealer & Pulp Canal Sealer EWT

Pulp Canal Sealer™ is a zinc oxide eugenol sealant with a powder base and liquid catalyst. The formula is non-irritating and radiopaque. Pulp Canal Sealer™ EWT offers a processing time in excess of 6 hours.

24875	PULP CANAL SEALER
24746	PULP CANAL SEALER EWT
24745	CASE LOT POWDER REFILL
24873	CASE LOT LIQUID REFILL



SimpliFill

SimpliFill consists of standardised, approximately 4mm-long gutta-percha tips in standard ISO sizes mounted on a carrier. Following a try-in, the appropriate gutta-percha tip is inserted slowly into the canal without rotating. After apical placement, it is separated from the carrier by four full twists in an anti-clockwise direction. This allows for fast and safe sealing of the apical canal section in an easy manner. Parallel preparation of the apical third is a prerequisite.

We recommend LightSpeed files for preparation.



SimpliFill obturation 6 pcs

Size	25 mm	31 mm
35	972-3525	972-3531
40	972-4025	972-4031
45	972-4525	972-4531
50	972-5025	972-5031
55	972-5525	972-5531
60	972-6025	972-6031
65	972-6525	972-6531
70	972-7025	972-7031
80	972-8025	972-8031
90	972-9025	972-9031
100	972-1025	972-1031
110	972-1125	972-1131
120	972-1225	972-1231
130	972-1325	972-1331
140	972-1425	972-1431

SimpliFill obturation assorted

972-3545	25 MM 35-45 12 PCS.
972-6513	25 MM 65-130 12 PCS.
972-3541	31 MM 35-40 6 PCS.
972-4551	31 MM 45-50 6 PCS.
972-5561	31 MM 55-60 6 PCS.
972-6571	31 MM 65-70 6 PCS.
972-8001	31 MM 80-100 6 PCS.
972-0031	31 MM 100-130 6 PCS.
972-1452	31 MM 140-150 6 PCS.

SimpliFill accessories

972-0082	SIMPLIFILL SEALER
972-0083	SIMPLIFILL ORGANISER BOX

Soft-Core

Carrier-based Soft-Core® obturators are 30% thinner, allowing greater flexibility to navigate curved canals.

A thinner core also means more gutta-percha for denser fills every time. And with just one universal taper size, you can greatly reduce and simplify your carrier inventory with Soft-Core obturators.

Soft-Core® is made from absolute state-of-the-art alpha phase gutta-percha and offers exceptional flow properties, adhesion and improved sealing.

Soft-Core Classic Obturator Econo Intro Kit

972-3000 1 Soft-Core oven; 3 packs each with No. 20, No. 25, No. 30 and No. 35 obturators (6 each per pack);
2 packs each with No. 20, No. 25,
No. 30 and No. 35 verifiers (6 each per pack)
with No. 1 LA Axxess stainless steel drill (6 each per pack).

Soft-Core Oven

972-3002 The new Soft-Core oven provides a simple and consistent method for the simultaneous heating of up to 4 Soft-Core obturators.

Soft-Core Verifier

(Pck of 6 pcs)

NR. 20 972-3220	NR. 45 972-3245
NR. 25 972-3225	NR. 50 972-3250
NR. 30 972-3230	NR. 55 972-3255
NR. 35 972-3235	NR. 60 972-3260
NR. 40 972-3240	

Soft-Core Obturation

(Pkg of 6 pcs)

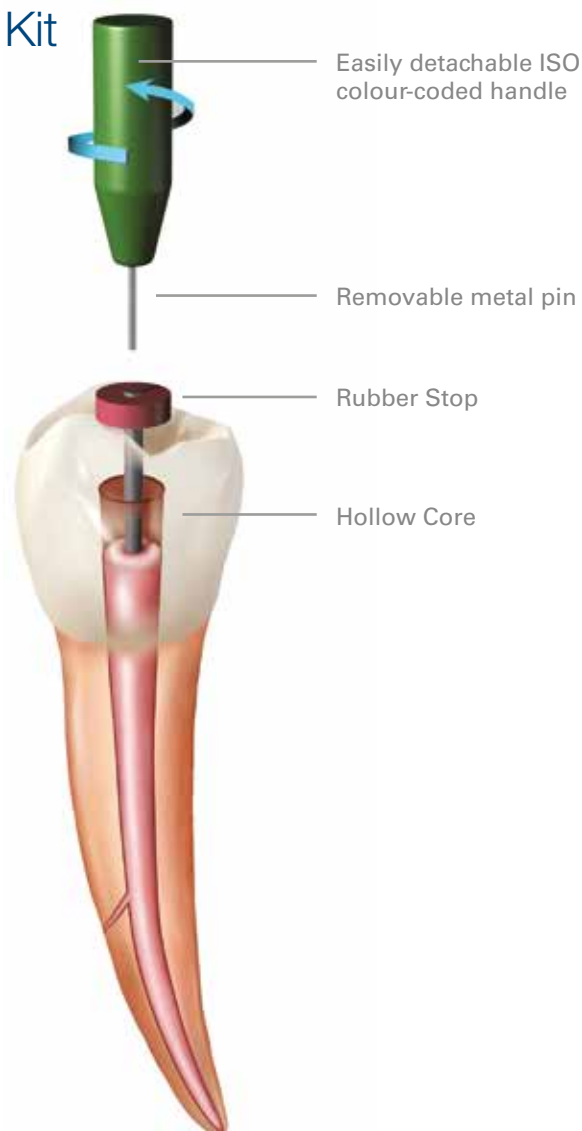
NR. 20 972-3020	NR. 45 972-3045
NR. 25 972-3025	NR. 50 972-3050
NR. 30 972-3030	NR. 55 972-3055
NR. 35 972-3035	NR. 60 972-3060
NR. 40 972-3040	

Soft-Core Obturation Economy Pack

(Pkg of 36 pcs)

NR. 20 972-3120	NR. 45 972-3145
NR. 25 972-3125	NR. 50 972-3150
NR. 30 972-3130	NR. 55 972-3155
NR. 35 972-3135	NR. 60 972-3160
NR. 40 972-3140	

*Daten liegen vor.



Soft-Core introductory kit



Alphabetic index

Apex ID	4	SJ Tips	26
Autofit gutta-percha	42	SlickGel ES	33
Autofit Paper Points	41	SmearClear	33
BK-3 Tips.....	25	Soft-Core.....	45
Buchanan Heat Plugger.....	40	Soft-Core Obturation	45
CT Attachments	27	Soft-Core Obturation Economy Pack.....	45
Diamond-Coated Ultrasonic Tips.....	26	Soft-Core Verifier	45
Elements Diagnostic Unit	5	Soft-Core Classic Obturator Econo Intro Kit.....	45
elementsfree	36	Soft-Core Oven.....	45
Elements Motor	10	Special tips	25
Elements Obturation Unit	38	Spreader tips	25
EndoRing	20	SYSTEM B Plugger.....	39
EndoRing Kit	20	TC2 Cordless Motor	13
EndoVac	30	TF Adaptive Assorted Files.....	10
EndoVac Accessories.....	31	TF Adaptive Files	10
EndoVac Cannulas	31	TF Adaptive Gutta-percha.....	11
EndoVac Starter Kit.....	31	TF Adaptive Obturator.....	11
File Adapter.....	27	TF Adaptive Paper Points.....	11
Gutta-Percha.....	42	TF Adaptive Starter Kit	10
Hedstrom Files	15	TF Adaptive System.....	8
K-Files	14	TF Adaptive Verifier	11
K-Flex Files	14	TF Files	17
K3 Files.....	20	TF Procedure Pack.....	18
K3 G.....	20	TF Taper and Tip.....	18
K3 gutta-percha	42	The «4» series	24
K3 NiTi Files	19	Tip Snip	42
K3 VTVT.....	20	Triple-Flex Files.....	15
K3XF	21	Tubli-Seal	43
K3XF Files & Obturation	22	Tubli-Seal EWT	43
LightSpeed LSX	23	Ultrasonic.....	24
M4 Safety Handpiece	12	Ultrasonic Tips Introductory kit.....	24
M4 TC2 Handpiece	12	UT Attachments	26
MiniEndo II.....	24	Xpress Sealer.....	43
Pathfinder.....	16		
Pathfinder CS.....	16		
Pulp Canal Sealer	43		
Pulp Canal Sealer EWT.....	43		
Reamers	16		
RedStar Attachments.....	27		
Sealapex.....	43		
Simple 3-File Technique.....	18		
SimpliFill.....	44		
Simpliseal.....	43		

Your favourite dental product brands,
now united under one strong Kerr brand.

Kerr™

RESTORATIVES

SonicFill OptiBond FL SuperMat
Take 1 Advanced OptiBond XTR
Demi Ultra TempBond Vertise Flow
SuperCap CompoRoller OptiDisc
Herculite XRV Ultra Maxcem Elite
Occlubrush Opti1Step Compothixo
X-Ray Centering Devices NX3
Herculite XRV Ultra Flow MetaFix

Kerr™

ENDODONTICS

elementsfree TF Adaptive K3XF
Jet Diamond Burs Apex ID EndoVac
Elements Motor Jet Carbide Burs
BluWhite Diamond Burs Sealapex

Kerr™

PREVENTION

Cleanic CaviWipes OptiView
Pasteless Prophylaxis Pro-Cup Ring Pots
CaviCide Click-Probe CleanPolish
Implant Paste Perio-Probe Seal-Tight