



Restorative & Endodontics Catalogue

Discover what perfect partners our Endodontic and Restorative products are.

dentsplysirona.com

CEE000X
Dentsply Sirona XX/2017

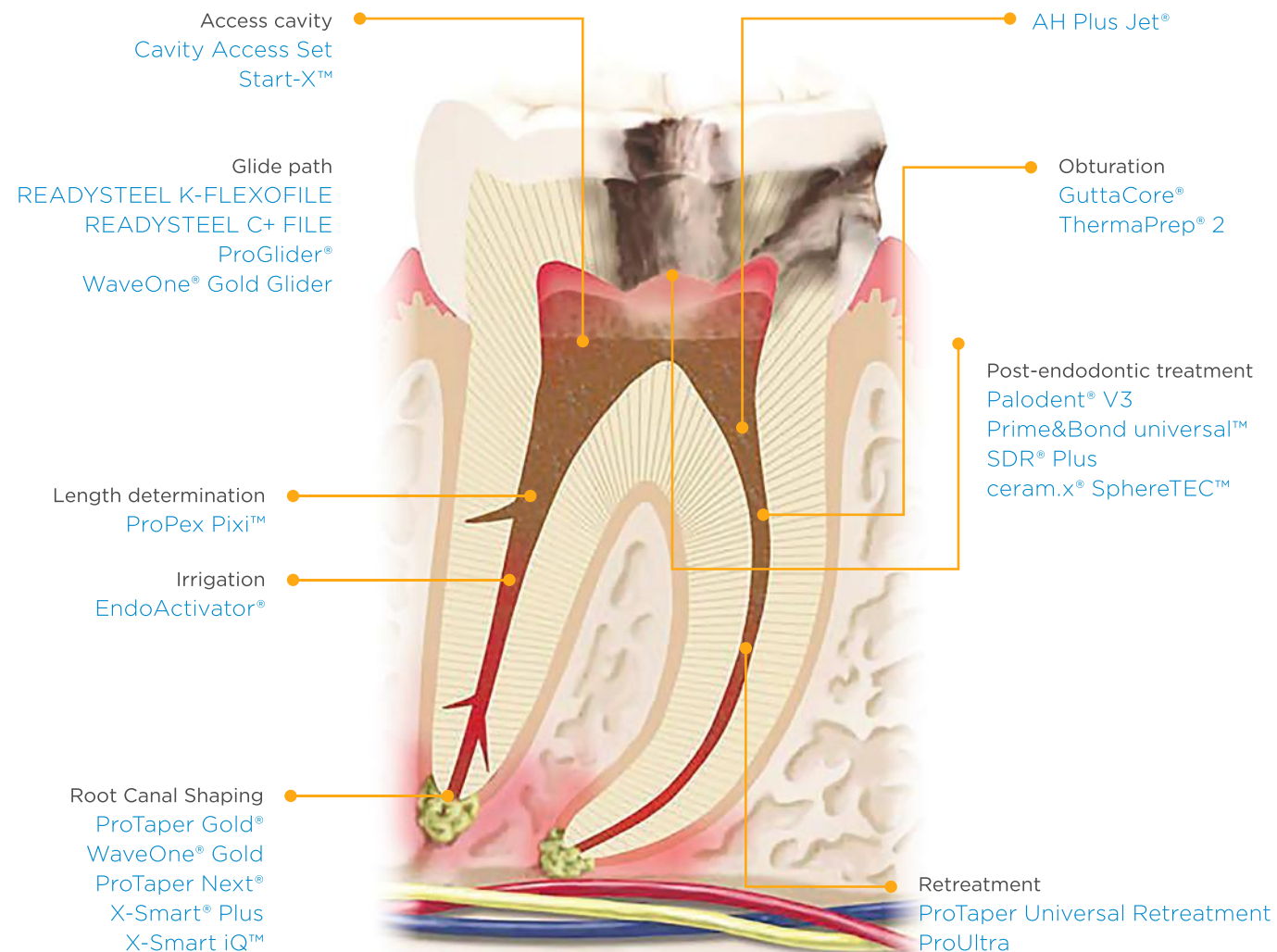
THE DENTAL
SOLUTIONS
COMPANY™



THE DENTAL
SOLUTIONS
COMPANY™



Solutions for all stages



Calibra® Cements

- Easy cleanup – 45-second extended gel phase for thorough cleanup of excess cement
- A wide tack cure window of up to 10 seconds – no need to worry about over-curing

Calibra® Universal Self-Adhesive Resin Cement

The routine, self-adhesive cement for nearly any indication

- One-step cementation
- High immediate 6-minute bond strength for a strong initial bond
- 5 esthetic shade options with Shade Stable® technology virtually eliminates color shift over time

Calibra® Ceram Adhesive Resin Cement

The maximum strength adhesive cement with immediate and long-term bonding for all-ceramics and CAD/CAM restorations

- Simple system for superior clinical performance. No need for a self cure activator, and no mixing of primers when used with Prime&Bond® universal™ Adhesive
- Immediate and long-term high retentive bond strength on ceramics compared to leading brands means successful restorations and greater patient satisfaction
- Low film thickness
- 5 esthetic shade options with Shade Stable technology virtually eliminate color shift over time

Calibra® Veneer Esthetic Resin Cement

The enduring, esthetic veneer cement with 12 years of proven clinical performance

- Over a decade of proven clinical performance
- A visible light cured cement with virtually unlimited cleanup time
- Thixotropic nature allows for favorable handling
- Try-in pastes closely match their corresponding shades
- 5 esthetic shade options with Shade Stable technology virtually eliminate color shift over time



Trope study

Trope concluded that an endodontic success rate varies depending on the quality of the postendodontic restoration.

Absence of Periapical Inflammation (API)
= „Endodontic Success“

	Good Resto	Poor Resto
Good Endo	90%	44%
Poor Endo	68%	18%

Trope. M: Periapical status of endodontically treated teeth in relation to the technical qualitt of the root filling and the coronal restoration. University of North Carolina, Chapel Hill, temple Dental School, USA Int End J (1995) 28. 12-18

Cavity Access Set

Professional access cavity preparation

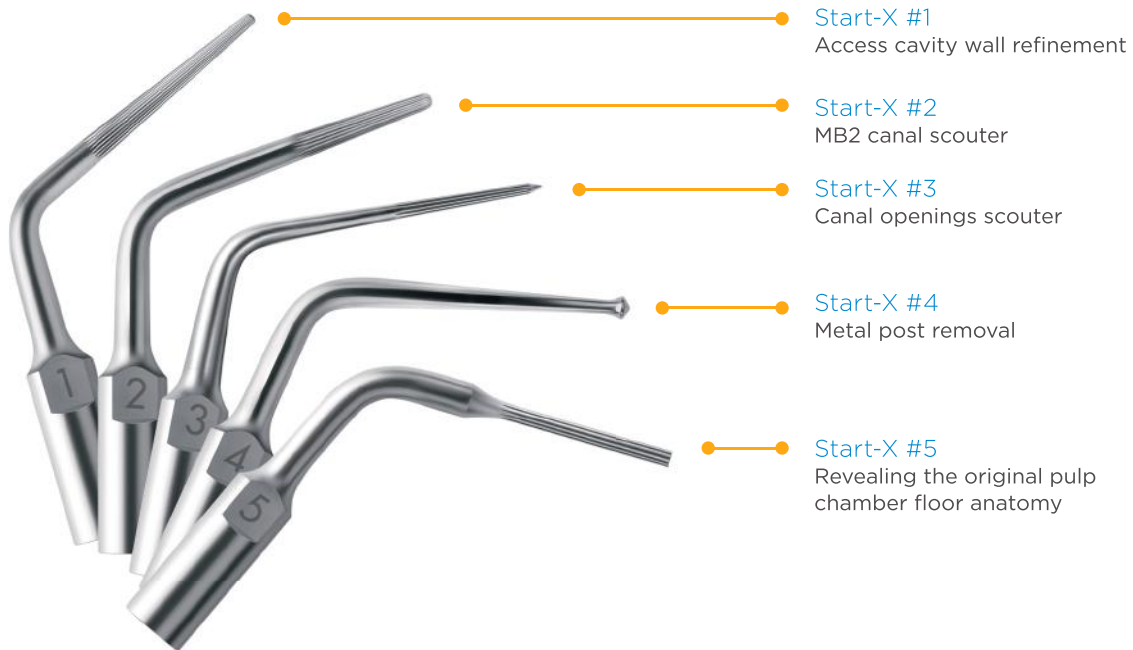
- Well organised set containing an essential selection of instruments that cover most configurations
- Professional preparation by creating a straight access and a flushing liquid reservoir – an excellent base for a successful endodontic restoration
- Includes the innovative X-Gates drill, which combines all the advantages of Gates 1, 2, 3 and 4 in one instrument



Start-X™

Ultrasonic tips for the access cavity

- Simple system: one tip – one clinical indication
- A range of ultrasonic tips designed for specific indications
- Great working precision thanks to an incomparable view of the operative field
- Micro milled active part – minimised risk of potential diamond grit loss in the patient's mouth
- Inserts available for Satalec and EMS machines



READYSTEEL® K-FLEXOFILE

Ideal for glide path preparation

- Triangular cross-section for enhanced flexibility
- Safe ended tip reducing risk of transportation and ledging
- Traditional ISO sizes, and 0.02 tapered



READYSTEEL™ C+ FILE

Scouting for the root-canal entrance

- Easy identification of the canal entrance; pyramid-shaped tip with cutting edges for catheterisation of difficult canals
- Better tactile feel
- Easier access to apical third
- Better negotiation of calcifications



ProGlider™

Glide through quickly and easily

- Suitable for highly curved cases
- Reduced canal transportation compared to manual glide path instruments
- Simple to use



Respect canal anatomy

Berutti et al. 2013



Conventional stainless steel file – high aberration prevalence (zips, ledges and transportation)



ProGlider™ – significantly less aberrations

WaveOne® Gold Glider

Optimize your shaping preparation with a single reciprocating glide path file that is part of the WaveOne® Gold solution

- Respects the natural shape of the canal
- Increases patient safety with enhanced flexibility and resistance to cyclic fatigue
- Sterile and ready for single use, which preserves cutting efficiency, reduces breakage and prevents cross contamination

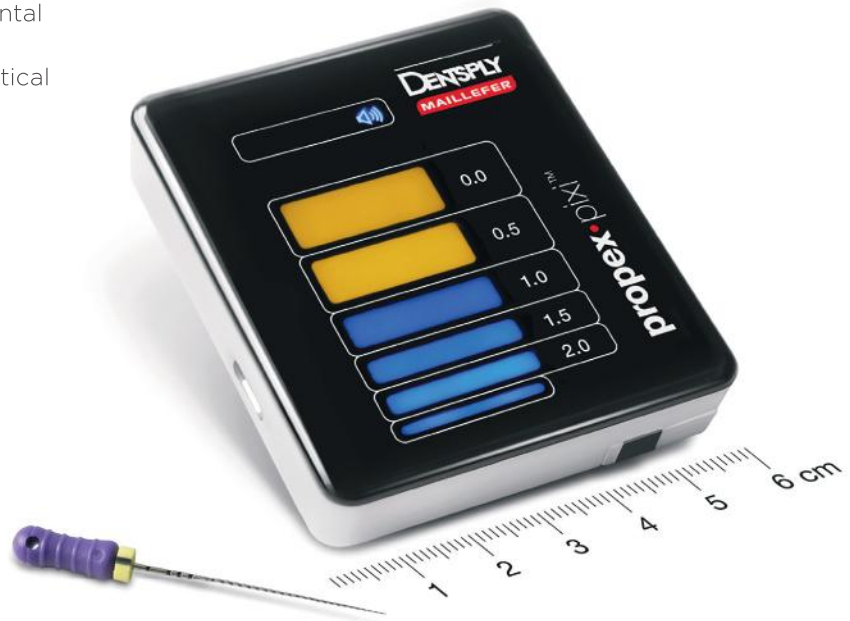
The WaveOne® Gold Glider is only for use in reciprocating motion with compatible Dentsply Sirona motors. Helpful pre-programmed motor settings are available.



ProPex Pixi™

Small size, big benefits

- Multi-frequency apex locator for reliable working length determination
- Amongst the leaders for precision and accuracy
- Pocket size – can be clipped to the dental bib for convenience
- Monitors file movement using both optical and acoustic controls



Ex vivo study by Professor Kuttler for the Journal of Endodontics.

Aim: To compare ex vivo accuracy of the table-top Root ZX and the ProPex Pixi™.

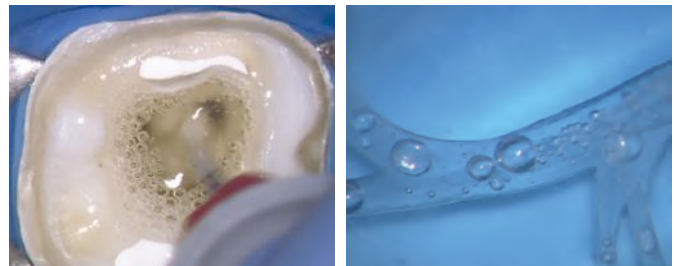
Results: Demonstrate that there is no significant difference in the accuracy between Root ZX and ProPex Pixi™.

Dr. Sergio Kuttler, Professor of Endodontics, Nova Southeastern University.

EndoActivator®

Easy to use and safe solution to activate your irrigation

- Effective activation contributing to debridement and disinfection
- Safe thanks to strong and flexible activator tips (MG* polymer) with depth markings
- Single-use article for simple hygiene procedures (activator tips, protective barriers)



* Medical-grade, suitable for medical applications

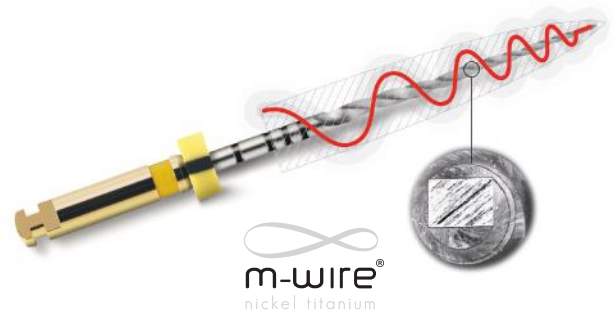
ProTaper Next™

Next generation eccentrically rotating file system: efficient and versatile*

With ProTaper Next™, risk of file separation is further decreased while respect of the original root canal anatomy is greatly improved*. The unique off-centred rectangular cross-section gives the file a snake-like swagging movement and provides enlarged space for debris removal, whilst making it possible to shape more severely curved and narrow canals than before.

- Can be used in difficult anatomical situations (narrow, severely curved canals) due to the unique snake-like swagging motion and high flexibility
- Instrumentation time is 15% to 25% less thanks to a shorter instrument sequence: only two files are needed in most cases* due to more efficient cutting performance*
- Unique file cross-section for greater safety: 75% greater fatigue resistance* 25% less screwing effect*
- 11 mm handle for improved accessibility in posterior teeth
- M-WIRE NiTi material (an advanced Dentsply Sirona proprietary thermal treatment process) improves file flexibility and has a greater resistance to cyclic fatigue, while still retaining cutting efficiency
- Complete systems with matched paper points/gutta percha tips and obturators
- Risk-free application and a high standard of care with sterile packed files and single-patient use
- Can be used with any endo standard motor with one speed setting (300 rpm) and one torque setting (2 Ncm)

* Compared to ProTaper® Universal



Novel off-centre cross-section gives a swagging file movement that generates enlarged space for dentine debris removal, reduces binding, and lets the file track the natural canal even more closely.



ProTaper Next™

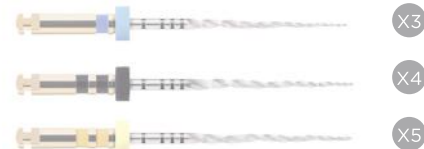


Other file systems

ProTaper Next™ Basic Sequence



ProTaper Next™ Optional



ProTaper® Gold

The new generation of ProTaper® Universal file system

- 2,6x greater resistance to cyclic fatigue*
- Flexibility increased by 24%**on average (allows the file to preserve the natural curvature of the canal)
- The file handle shortened from 13 mm to 11 mm (improved intraoral visibility)
- Higher instrument flexibility thanks to the patented GOLD technology
- Keeps the same file sequence, working technique and cutting efficiency as ProTaper® Universal



PROTAPER GOLD™ shaping files pre-enlarge canals and are designed to be used with the same familiar outstroke brushing technique.



PROTAPER GOLD™ finishing files are more flexible so you can shape and finish each canal with a complete system approach.



ProTaper® Gold SX & ProTaper Next™ XA

- Instruments that create straight access to canal orifices and enlarge them

WaveOne® GOLD

Reinforces patient safety

- Primary WaveOne® Gold file is 50% more resistant to cyclic fatigue than WaveOne® Primary file
- Reduced screwing effect** compared to standard rotary systems

Covers a wider* range of canal morphologies

- Enhanced file flexibility thanks to the Gold technology
- Extended size range (Small, Primary, Medium, Large)

Shortens the shaping time

- Takes the cutting efficiency to higher level
- A single file per treatment also translates into time savings for canal shaping and irrigation



The majority** of root canals can be shaped with a single WaveOne® Gold Primary file

WaveOne® Gold Glider



015 2%

WaveOne® Gold



020 7% Small



025 7% Primary



035 6% Medium



045 5% Large

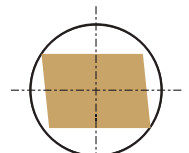
ISO color coded

Optimized tip

Variable taper

GOLD thermal treatment

Evolving cross-section



Reciprocating motion

** compared to WaveOne®

** internal laboratory testing results

X-Smart® Plus

User-friendly endo motor for continuous and reciprocating rotation

- Continuous or reciprocating rotation file systems for maximum versatility
- Simple interface with large display, dedicated button controls, file library, on/off button on the motor hand piece and intuitive navigation
- Excellent visibility and access with the miniature contra-angle attachment
- Compact and portable
- Purchase in kit combinations with ProTaper Next™ and WaveOne® GOLD



X-Smart IQ™

- Slim, well-balanced handpiece for easy access and excellent visibility
- Continuous and reciprocating motion
- Control the motor via iOS-App on your iPad mini™
- Facilitate treatment data capture and transfer
- Flow through your sequence with peace of mind
- **RTTM™ (Real Time Torque Monitoring)**



AH Plus Jet

The No. 1 of endo sealers

- Safe with excellent sealing action (low shrinkage, low permeability), high biocompatibility, and excellent radiopacity*
- Thermally stable up to 260 °C, particularly well suited for hot obturation
- Easy handling and optimum mixing from a double-barrelled syringe
- Also available in tube mix to suit your preference



“AH Plus is an excellent sealer with properties that allow it to be used in a variety of obturation techniques.”

James Aquilina BDS Msc (Endodontics)

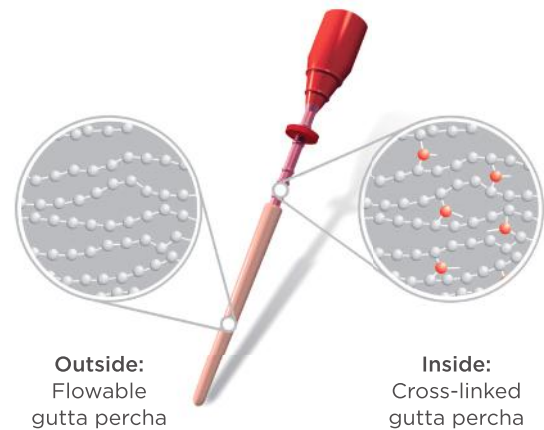


*Data available on request

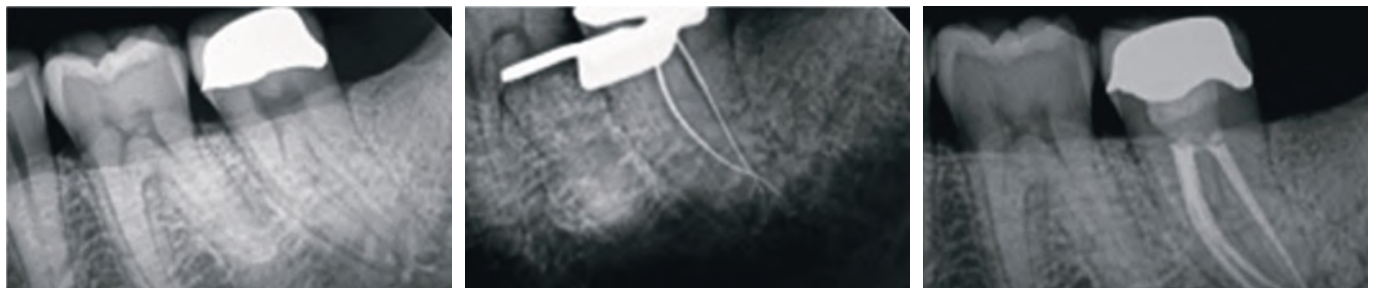
GuttaCore®

Obturator with a cross-linked gutta percha core

- Obturate the system, not just the canal, with flowable gutta percha
- Post space simplified
- Easy and quick single-step filling with rapid heating in the ThermaPrep® 2 oven
- Now with 100% pink gutta percha core for easy recognition and retreatment



Upgrade from Thermafil today. GuttaCore® can be used with any ThermaPrep oven. Always heat GuttaCore® on the lowest setting.



Mandibular left second molar with a root length of 24.5mm. The canals were instrumented to size F1 (ProTaper) and filled with obturators and AH Plus root-canal sealer. For easier access to the mesial canal, the handle was removed and the obturator applied at the correct insertion angle using tweezers with an arresting mechanism. The distal channel was filled in the usual manner without removing the obturator handle.

Courtesy of Dr. James Gutmann

ThermaPrep® 2

3-dimensional heat for a 3-dimensional obturation

- Heated 3D obturation using any Dentsply Sirona obturators (Thermafil, WaveOne®, ProTaper® Universal, WaveOne® GOLD, GuttaCore™)
- Heated in seconds in single and dual mode
- Slow release of obturator holder, built-in timer with alarm, indicator lights and cleaning mode

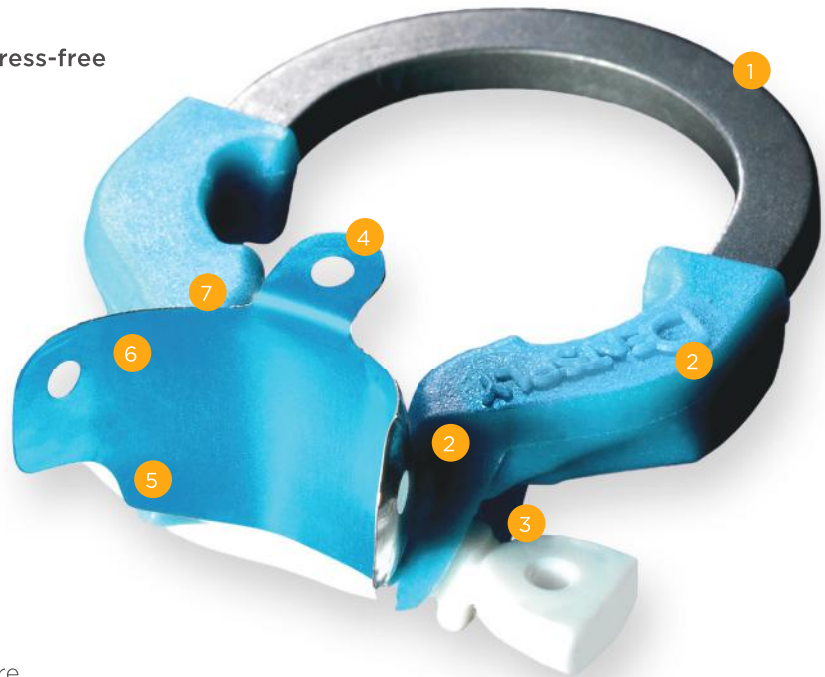


Palodent® V3

Sectional matrix system

Class II restorations – safe, reliable, stress-free

- Predictable tight contacts
- Tight gingival seal
- Less flash, less finishing
- Easy-to-use system



1. Strong NiTi rings for outstanding spring strength and memory
2. Glass-fiber reinforced plastic tines are V-shaped to accommodate the wedge
3. Pin tweezer hole for easy placement & removal of wedge
4. Top tab for easy insertion and side tab for removal of matrix
5. Gingival apron to prevent gaps in gingival-axial corner
6. Greater curvature: matrix wraps around tooth
7. Pronounced marginal ridge for natural-looking anatomy

Prime&Bond universal™

Active Control for reliable restorations

New patented Active-Guard™ Technology

- Versatility for use with all etching methods, all indications
- **Active cavity spreading** helps to avoid dry spots
- **Low film thickness** for a reduced risk of pooling and misfit of the restoration
- **Active tubule penetration**
- Reliable performance on over-wet and over-dried dentin
- Virtually no post-operative sensitivity
- Long working time: 30 minutes in a closed CliXdish™
- Unique formulation free of HEMA, TGDMA, and bisphenol



Prime&Bond universal™



A single drop, placed using a micro brush without further manipulation, naturally spreads across most of the surface.

Single Bond Universal



Other universal adhesives resist spreading.

iBOND® Universal



Other universal adhesives resist spreading.

SDR® Plus

SDR® Plus is the improved next generation of the leading and still unmatched flowable bulk-fill material SDR®

A perfect endo needs a perfect resto!

- 4 mm bulk fill with excellent adaption to deep cavities (self-leveling, no need for additional manipulation to adapt)
- Lowest stress bulk fill composite on the market
- Reliable even in high C-factor cavities
- New A shades for bigger versatility (including Class III and Class V restorations)
- More indications
- The unmatched bulk fill material with several years of proven clinical success
- Up to 4 mm increments:
Up to 40% placement time savings
- Self-leveling consistency: Excellent cavity adaptation, even in deep cavities
- Available in four shades: Universal A1, A2, A3



Additional opportunities to use SDR Plus material



Primary molar with SDR Plus restoration after 2 years in-situ.
Dr. V. Ehlers



Dentsply Sirona internal picture



Dr. van der Vyver

+Primary Posterior Dentition

SDR® Plus material can be used without an additional universal composite and in increments up to the occlusal surface. Fast and easy application technique make it ideal for the treatment of children.

+Pit & Fissure Sealing

The thin compule allows the material to flow easily into all fissures for highly precise application.

+Core Build-Up

The 4 mm depth of cure of SDR® Plus material make it a fast and easy alternative for core build-up. It handles instrumentation and shaping with ease.

+Reliable adhesion

Endodontic cavities are particularly challenging for bulk fill composites, as most are very deep Class I like cavities. This maximizes shrinkage stress potential, indicated by a high C-factor. Studies indicate that when high C-factor cavities are filled in bulk, the choice of the composite is an important element to avoiding adhesive debonding.**

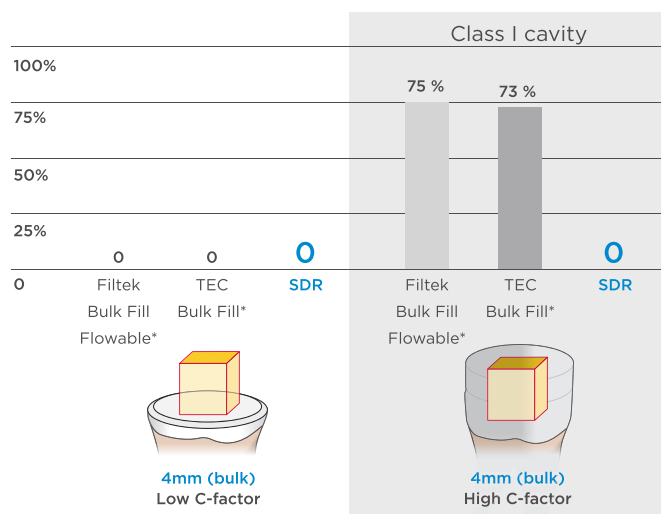
SDR Plus material with SDR technology can deal with high C-factor cavities, leading to a tight coronal seal even for post-endodontic cavities.

+Tight seal

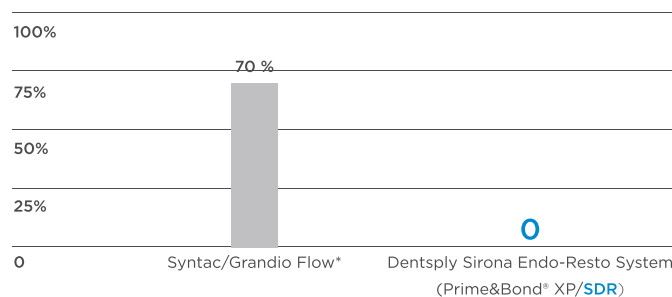
“SDR Plus ensures a tight seal of the endodontic access cavity – an important factor for long-term endodontic treatment success.”

Prof. Dr. Schirrmeister,
University of Freiburg, Germany

Pre-test failures [%] during micro tensile bond strength testing to cavity floor



Relative number [%] of specimen showing leakage into root canal***



* Not a registered trademark of Dentsply Sirona

** Van Ende A et al., 2016: Effect of Bulk-filling on the bonding efficacy in Occlusal Class I Cavities. J Adhes Dent.; 18(2):119-24

***Internal Report Ebert J, Study No 14 1408 (2011). Available upon request, see contact details

ceram.x[®] SphereTEC[™]

Universal Nano-Ceramic Restorative

Exceptional handling

- adapts easily to cavity surfaces, doesn't stick to instruments, easy to sculpt and slump resistant

Simple Cloud Shade concept

- 5 CLOUD shades cover the full VITA[®]* range, reliable shade match thanks to a distinct chameleon

Effect and smart i-shade label for a quick translation into VITA[®]

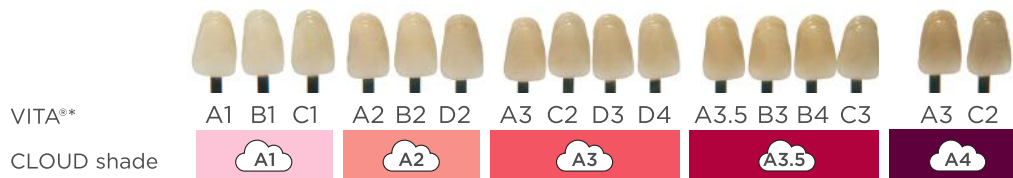
Excellent adaptation and sculptability

- Ingenious simple shading system:
5 shades to cover the full VITA[®]* range
- Fast and easy polishing for outstanding gloss with both, silicon based polishers and abrasive discs
- Natural esthetics

Explore the novel filler technology SphereTEC[™]

Morphology, particle size distribution and surface micro structure are key for the enhanced handling comfort and aesthetic outcome.

- Extra strong



After preparation



After finishing



After 20 sec. polishing

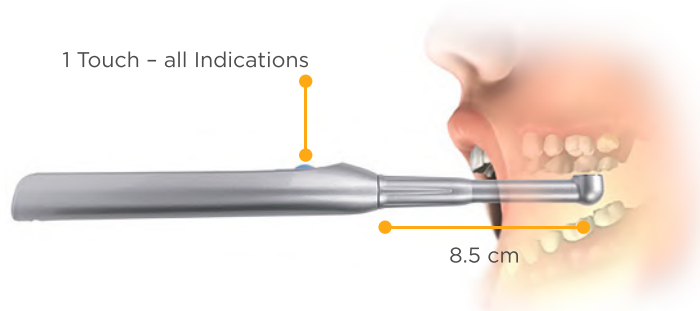
* VITA[®] is not a registered trademark of Dentsply Sirona.

SmartLite® Focus®

Pen-Style LED Curing Light

SmartLite Focus®

- Reliable light curing over larger distances
- Homogeneous performance within the curing area
- Excellent Intra-oral access
- Easy one-touch handling – one mode for direct and indirect restorations
- Virtually permanent availability



Enhance®

Finishing System

Fewer Steps. Less Time. Impressive Results.

Coarse when you need it, fine when you want it The Enhance Finishing System accomplishes the entire process of excess removal, contouring, and finishing simply by varying the pressure.

- In just one step the Enhance Finishing System delivers a smooth and contoured surface with a natural looking finish
- Apply more pressure for excess removal and initial contouring and back it off for a naturally smooth surface



Enhance® PoGo®

Polishing System

Creates an easy, dependable method for achieving natural looking, high luster restorations
Maximum gloss per system

After achieving a natural looking finish with Enhance, create a high-end luster with the Enhance® PoGo® diamond polishing system.



ProTaper® Universal Retreatment

Special files for removing root-canal fillings

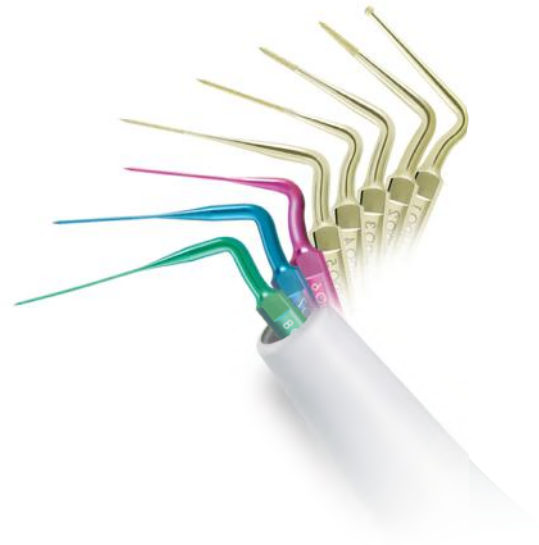
- Specially designed for endodontic retreatment procedures, in order to remove filling material before canal re-shaping
- Rotary NiTi endodontic retreatment instruments providing efficiency and safety
- Optimal choice in case of necessary retreatment after any primary treatment system used



Pro Ultra® Endo Tips

Endodontic ultrasonic instruments

- Patented contra-angled feature enhances access to all teeth
- Abrasive coating increases efficiency and precision
- Titanium instruments with unique geometry that provides enhanced access in restrictive areas
- Inserts available for Satalec and EMS machines



Aquasil™ Soft Putty

- Regular Set with very high viscosity and optimum flexibility for easy removal from undercuts
- Various techniques - for use as a tray material for the double mix technique or as primary impression material for two-step putty/wash technique



Aquasil™ Ultra

Smart Wetting elastomeric impression material

- Excellent wettability - precision despite moisture due to hydrophilic properties
- Ultra-high tear strength
- Available in Light, Medium and Heavy-bodied consistency with Super Fast, Fast, Regular and Extended setting Time
- For all dental impression techniques



Celtra® Duo

Zirconia-Reinforced Lithium Silicate (ZLS) Block

Flexible processing

- Mill and Polish or Mill and Fire

High strength

- 210MPa flexural strength (Mill and Polish)
and 370MPa flexural strength (Mill and Fire)

Lifelike esthetics

- Natural opalescence, fluorescence, and chameleon effect give Celtra Duo (ZLS) restorations the appearance of natural teeth.

Simple Cementation

- For cementation, after etching and silanating the restoration, apply Calibra® Ceram Cement. Simply etch and silanize the internal surfaces of the restoration, then apply Prime&Bond universal™ Universal Adhesive and Calibra Ceram Adhesive Resin Cement for easy clean-up and proven long term reliability.

