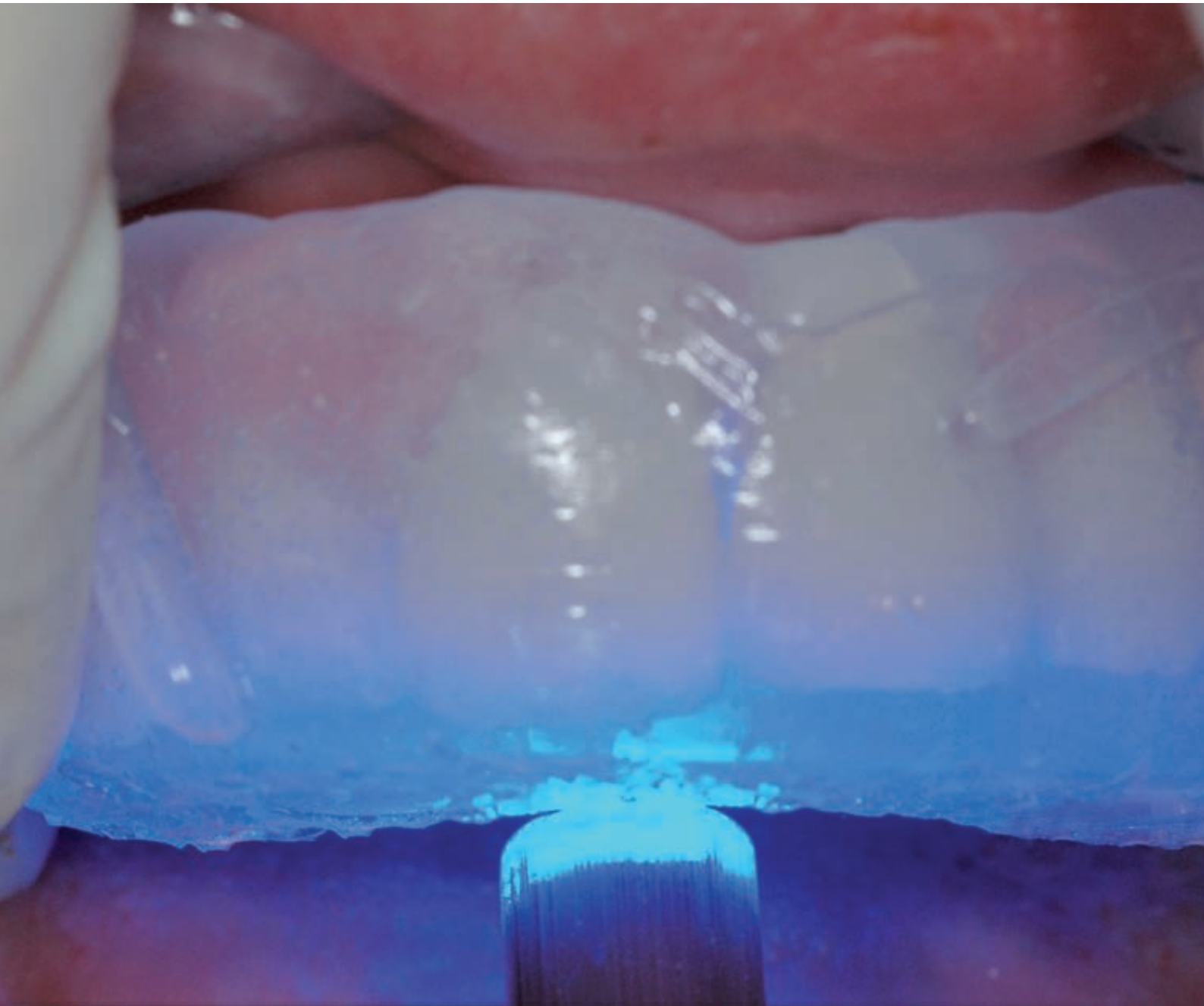


elite glass



Clinical

A-Silicone Clear Matrix Material

Zhermack 
Dental

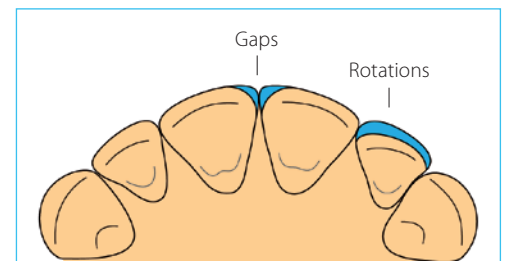
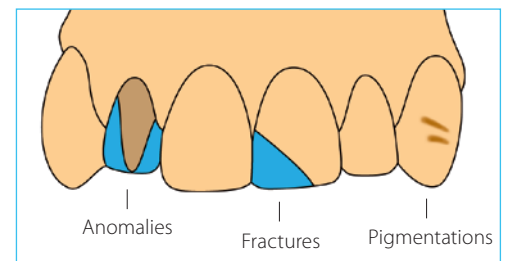
elite glass

The clarity of detail

ELITE GLASS is the new A-silicone from **ZHERMACK** in 50 ml automix cartridges for the construction of extremely transparent matrices, used for the direct processing of **cosmetic restorations**.

OPERATING VERSATILITY

ELITE GLASS can be used in a **variety of clinical situations**, processing the matrix directly from the mouth of the patient (e.g. pigmentations) or alternatively indirectly, based on a model (e.g. fixing gaps, correcting rotations, fractures, dental anomalies, temporary crowns).



EXTREME TRANSPARENCY

The new formulation of **ELITE GLASS** ensures **highly transparent** matrices, guaranteeing the **perfect photopolymerisation** of the composite used for the restoration.

IDEAL RIGIDITY

The ideal rigidity of the matrices created using **ELITE GLASS** ensures **the original shape** remains unaltered, and simplifies repositioning **without deformations**.

QUALITY AESTHETIC RESULTS

The matrices created using **ELITE GLASS** allow **excellent aesthetic results** to be achieved in a **short time**, simplifying the clinical procedures.

DIRECT CLINICAL CASE



Initial case



Creation of the matrix with ELITE GLASS: leave at least 2 mm of silicone around teeth*



Make sure there are no defects in the area involved in the impression



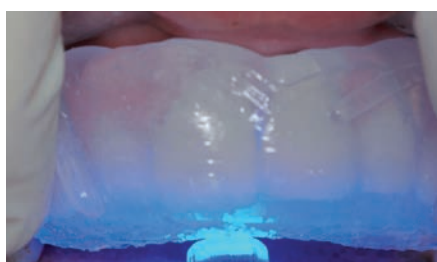
Preparation of the veneer



Treatment of the surface**



Application of the composite, starting from the incisor zone and moving towards the cervical edge



Repositioning the matrix made with ELITE GLASS in the mouth, making sure not to leave gaps between the matrix and the teeth. Photopolymerise through the matrix**



Finishing the composite: remove the excess material and polish**



End result

*Important: remember to trim the level of material at least when first used
**Follow the instructions provided by the manufacturer of the composite

TECHNICAL DATA

Working time	40"
Time in mouth	1'30"
Setting time	2'10"

The working time is intended from the beginning of the mixing at 23°C (73°F), the time in mouth is intended at 35°C (95°F)

elite glass



Packaging

C401610 ELITE GLASS

2 x 50ml cartridges (Base + Catalyst) + 6 mixing tips medium/green

Accessories

C202080 MIXING TIPS MEDIUM/GREEN

Mixing tips green (48 pcs)

C202100 DISPENSER D2

D2 dispenser - 1:1

BRANCHES

GERMANY

Zhermack GmbH Deutschland

Öhlmühle 10 - D-49448 Marl

T +49 (0) 54 43 / 20 33 - 0
F +49 (0) 54 43 / 20 33 - 11
info@zhermack.de
www.zhermack.de

POLAND

Zhermapol Sp. z o.o.

ul. Augustówka 14
02 - 981 Warszawa - Polska

T +48 22 858 82 72
+48 22 292 71 17
F +48 22 642 07 14
biuro@zhermack.com
www.zhermapol.pl

USA

Zhermack Inc.

P.O. Box 4195, River Edge
New Jersey 07661 - 4195

T +1 (877) 819 6206
+1 (732) 389 8540
F +1 (732) 389 8543
info@zhermackusa.com
www.zhermackusa.com

Zhermack S.p.A. | Via Bovazecchino, 100 | 45021 Badia Polesine (RO) ITALY
T +39 0425 597611 | F +39 0425 53596 | info@zhermack.com | www.zhermack.com

Zhermack