



**roeko**

**Successful Endodontics require  
more than just good luck...**

# Vitality control testing

## roeko Endo-Frost

### Cold spray

- temperature -50 °C
- for freezing pellets and dental rolls
- spray nozzle for precise application
- odourless



## roeko Endo-Frost Pellets

### Ideal for vitality testing.

The pellets are cooled with cold spray to test the vitality of the tooth.



# Root canal instruments and accessories

Roeko root canal instruments are made of stainless steel and are particularly flexible sharp, cutting. Their cutting edges are ground with highest precision and are flawless. The autoclavable instruments are supplied with different shaped stoppers indicating the instrument type.

## roeko Reamers (ISO), Length 25 mm

For obturation of the root canal



## roeko H-Files (ISO), Length 25 mm

For cleaning and enlargement of the root canal



## roeko K-Files (ISO), Length 25 mm

For obturation of the root canal



## roeko Stopper

For Roeko root canal instruments

- made of silicone
- radiopaque



## roeko Endo Gauges

Roeko Endo gauges are ideal for setting the length of root canal instruments, paper, guttapercha, Calcium Hydroxide PLUS and activ points.

The compact and handy instrument holders can also be used for preparing and storing instruments ready for root canal treatment.

### Type CS

Chrome nickel steel with a specially treated surface, Ø 48 mm. Suitable for the autoclave and chemiclave. For 12 instruments with a central well and sponge for used instruments.



### Type C

Chrome nickel steel with a specially treated surface, Ø 33 mm. Suitable for the autoclave and chemiclave. For 8 instruments, no sponge.



## roeko Endo-Rac

Instrument holder for preparing and storing Roeko root canal instruments ready for treatment

- handy and compact
- chrome nickel steel
- mm graduation line determines the position of the stopper along the instrument
- suitable for the autoclave, chemiclave and dry heat sterilizer



## roeko Steribox

For the storage of Endo-Rac



## roeko Steripaper

according to DIN EN 868-2, with indicator



## roeko CanalBrush™

CanalBrush is a highly flexible endodontic brush made of polypropylene. It is used during root canal treatments to remove dentin, plaque and other impurities loosened by files and drills. The extremely small CanalBrush helps clean areas of the root canal which are not reached by files. The use of the CanalBrush in connection with an irrigating solution (e.g. NaOCl, NaCl, H<sub>2</sub>O<sub>2</sub>, alcohol, CHX) increases considerably the cleaning effect of irrigating solutions on the root canal surface. CanalBrush can be used manually with a rota-

ry action. However, it is more efficient to use it with a contra-angle handpiece at a maximum of 600 rpm.

- better cleaning effect than with files, without enlarging the canal
- very flexible, low risk of breakage
- can be autoclaved at 134 °C before use
- can also be used to place post cement or adhesives
- with endo stops for length control

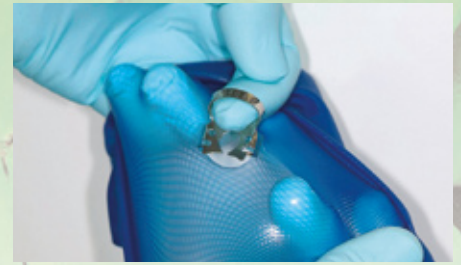


# Perfect isolation for safe and efficient working conditions

## roeko **Flexi Dam non latex**



- latex-free
- powder-free
- more tear resistant than latex
- highly elastic, easy to place
- has excellent recovery properties for effective isolation of the tooth
- no unpleasant odour
- available violet and blue



Highly elastic Flexi Dam non latex provides perfect isolation of the tooth setting an effective barrier between the oral cavity and the area of treatment.

## roeko **Punch**



Exact punching is a prerequisite for tear-free application of dental dam. The Roeko punch has a special feature: 8 hole sizes which provide more flexibility when working with different types of dental dam.



## roeko **Clamp Forceps**

The Roeko clamp forceps enable secure transfer and fixation of the clamps to the tooth. This precision instrument is light and therefore pleasant to use.

## roeko **Clamps**



The ideal shape of Roeko winged clamps and their uniform tension ensure a good fit around the tooth. They keep their excellent recovery properties and their ability to retract the dam effectively even after being used and autoclaved several times.

## roeko **Plastic frame**



The oval frame is radiolucent. The hinges in the middle of the frame allow it to be folded to one side, which is particularly advantageous during endodontics if an x-ray needs to be taken.

## roeko activ point



# Effective and time saving temporary root canal filling

### Chlorhexidine points

The points have a gutta-percha matrix with 5 % chlorhexidine diacetate. Chlorhexidine is known to be highly effective against bacteria and many other organisms including yeasts and fungi even in low concentrations.

- the chlorhexidine is integrated into a gutta-percha point for reliable and quick application into the root canal
- radiopaque
- easy to apply and easy to remove

### "Antibacterial Efficacy of a New Chlorhexidine Slow Release Device to Disinfect Dentinal Tubules

Lin S, Zuckerman O, Weiss EI, Mazor Y, Fuss Z

Dentinal tubules of 27 cylindrical bovine root specimens were infected with *Enterococcus faecalis*. In nine specimens, 5 % chlorhexidine was placed in a slow-release device (Activ Point) for 7 days, in another nine irrigation with 10 ml of 0.2 % chlorhexidine was used, and the remaining nine served as positive control. Powder dentin samples obtained from within the canal lumina using ISO 025 to 033 burs were examined for the presence of vital bacteria by inoculating brain-heart infusion plates and counting colony forming units. Results were analyzed using analysis of variance and covariance with repeated measures. Heavy bacterial infection was observed at the layer close to the lumen in the control specimens, decreasing rapidly from layer to layer up to the deepest layer tested (400–500  $\mu\text{m}$ ), which contained several hundred colony forming units. Viable bacteria in each layer of dentin were significantly reduced with chlorhexidine irrigation solution ( $p < 0.01$ ) and were completely eliminated with the chlorhexidine slow-release device ( $p < 0.01$ ).

Quoted from:  
Journal of Endodontics 2003, 29: 416-418

## roeko Calcium Hydroxide PLUS points



Calcium Hydroxide PLUS points are an excellent alternative to calcium hydroxide pastes. They are easy to use, practical and effective. The points ensure that  $\text{Ca}(\text{OH})_2$  is applied right down to the apex.

- clean (no smearing around the access cavity during insertion)
- time-saving – the points are ready to use
- easy to apply and to remove

### "Additive Antimicrobial Activity of Calcium Hydroxide and Chlorhexidine on Common Endodontic Bacterial Pathogens

Podbielski A, Spahr A, Haller B

It is an established procedure to use calcium hydroxide [ $\text{Ca}(\text{OH})_2$ ] as a therapeutic component to achieve sterilization of infected root canals. Unfortunately, some bacterial species are relatively resistant to  $\text{Ca}(\text{OH})_2$  and are therefore associated with treatment failures. The objective of this study was to identify combinations of substances that improve antimicrobial activity.  $\text{Ca}(\text{OH})_2$  was used as a suspension or as a component of gutta-percha points. Efficacy of killing was compared for (a)  $\text{Ca}(\text{OH})_2$  suspension alone; (b) zinc oxide (ZnO) points alone; (c)  $\text{Ca}(\text{OH})_2$  suspension combined with ZnO points; (d)  $\text{Ca}(\text{OH})_2$  suspension combined with ZnO/chlorhexidine points; and (e)  $\text{Ca}(\text{OH})_2$  points combined with ZnO/chlorhexidine points. Common endodontopathogenic bacterial species (*Enterococcus faecalis*, *Fusobacterium nucleatum*, *Peptostreptococcus micros*, *Porphyromonas gingivalis*, *Streptococcus intermedius*) in pure cultures served as target organisms. In the in vitro

assay, the antibacterial substances and approximately  $10^7$  colony forming units of test bacteria were co-incubated in diluted human serum under growth conditions appropriate for the single bacterial species. Samples were taken on days 0, 1, 2, 4, 7, and 14 of incubation and viable counts determined. Gram-negative bacteria were sufficiently killed by  $\text{Ca}(\text{OH})_2$  alone. Combinations with other agents did not improve the killing kinetics. For the inactivation of the Gram-positive bacteria *P. micros* and *S. intermedius*, a combination of  $\text{Ca}(\text{OH})_2$  and ZnO/chlorhexidine, killed the bacteria faster than  $\text{Ca}(\text{OH})_2$  alone. For *E. faecalis*, combining  $\text{Ca}(\text{OH})_2$  suspension with ZnO/chlorhexidine points lead to a faster decrease in the overall number of viable bacteria, but no test conditions lead to the complete loss of culture viability. The results of this study support the use of a combination of  $\text{Ca}(\text{OH})_2$  and chlorhexidine for faster eradication of *P. micros* and *S. intermedius* from infected canals.

Quoted from:  
Journal of Endodontics 2003, 29: 340-345

# High quality materials for top quality results

## roeko Paper points Top color



Roeko Top color paper points combine the advantages of the white and the coloured points. The colour coding at the top of the points prevents mixing of sizes. The white tip allows cleaning and drying of the root canal to be monitored.

- highly absorbent
- sterile
- exact ISO sizing
- fully automated production
- no adhesives
- firm yet flexible for easy application

## roeko Guttapercha points Top color



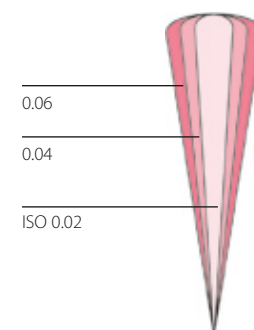
Roeko Guttapercha points Top color are ideal for lateral, vertical and thermal condensation techniques for a perfect, 3 dimensional filling of the root canal. The colour coding at the top of the pink points prevents mixing of sizes.

- easy to introduce in the canal
- radiopaque
- stiff yet flexible enough to follow the curves of the canal
- excellent tissue compatibility
- absolutely hygienic
- fully automated production

## roeko Guttapercha points Greater Taper



Roeko Greater Taper guttapercha points are ideal for obturating root canals which have been prepared with GT Files, HERO, ProFile, Quantec etc. At the tip of the point the diameter corresponds to the ISO sizes, but then the conicity is greater than with ISO points.



All roeko Endo points are available in assorted or individual sizes.

## roeko Retention Points



### Surface structured gutta-percha points

Retention is an important aspect for root canal fillings. It has been known for many years that posts with a structured surface provide greater mechanical retention than posts without this feature. With the new Retention Points we can now offer this concept for gutta-percha points too!

- greater contact area for GuttaFlow® and other sealers
- better mechanical retention

## Instruments for lateral and vertical condensation

### roeko Spreader NiTi



The tips are made from nickel titanium and have a memory, so they return to their original shape. The tips are flexible and follow the curves of the canal for effective lateral condensation of the guttapercha even in the apical third of the root canal. The flexibility of the tips means there is less pressure on the root canal wall, less risk of fracture.

Sizes 15, 25, 35

### roeko Plugger

For vertical condensation

- rings in handle indicate size
- stainless steel
- mm length graduation on tips



## Precise aspiration with sterile aspirator tips

### roeko Surgitip-micro

Micro surgical aspirator tips, ready for use in peel packs

Surgitip-micro is specially designed for use with microscopes and loupes. The extra-fine tip-opening of 1.2 mm ensures precise aspiration without blocking the field of vision. Supplied with an autoclavable double adapter



# Two in One – Cold Flowable Obturation System

roeko  
**GuttaFlow®**

**Original**



- first non-heated, flowable guttapercha that does not shrink but expands slightly
- excellent seal, excellent flow, outstanding biocompatibility
- ease of handling, simple to use as only one masterpoint is needed (condensation is not required)
- allows for excellent post preparation
- can be easily removed during retreatment
- ensures a very tight seal of the root canal
- radiopaque for excellent x-ray evaluation



## GuttaFlow®

Original with the green cap.

**10 – 15 min**  
Working time

**25 – 30 min**  
Curing time

## The product

### Canal Tip

- fast, easy and safe application
- Luerlock design for screwing onto the capsule
- flexible and bendable



### The capsule:

- Special capsule for single use
- GuttaFlow® consists of two components (paste-paste system)
- Exact dosage and reliable mixing
- No contamination
- The capsule is mixed for 30 seconds in a triturator before use



**NEW!**



## GuttaFlow® FAST

New, easy to identify with the red cap.

**4 – 5 min**  
Working time

**8 – 10 min**  
Curing time

ALTERNATIVE:

### Combi Tip

- 2-component tip made of metal and plastic
- Bendable



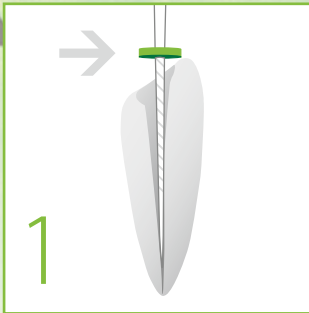
### Dispenser

- Elongated design for better reach
- The parallel movement of the dispenser lever guarantees controlled application
- Autoclavable

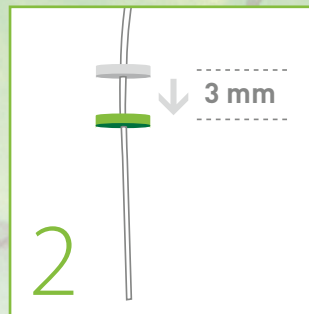




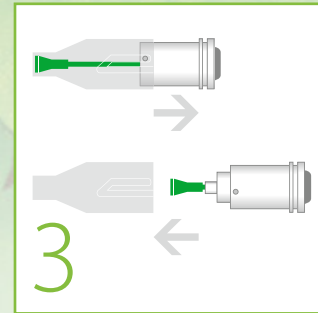
# Easy, fast and safe in the root canal



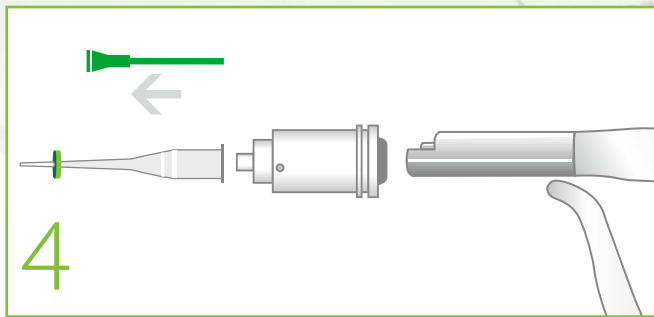
**STEP 1:**  
Determination of the working length.



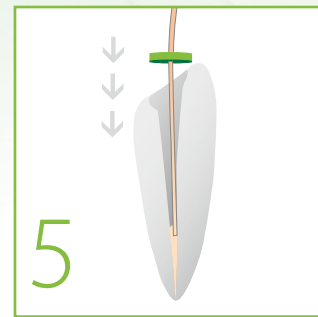
**STEP 2:**  
Move the green rubber stop 3 mm down towards the tip opening.



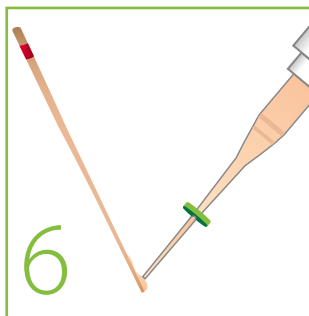
**STEP 3:**  
Push the cap right down over the capsule and then remove it. Mix GuttaFlow® (capsule) for 30 sec. in a triturator.



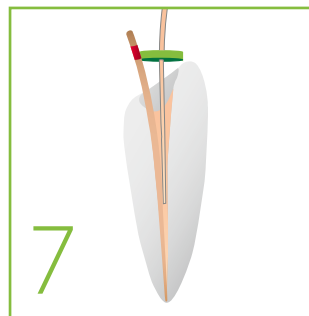
**STEP 4:**  
Remove the green activation pin from the capsule, twist the pre-set canal tip with endo stop and insert the capsule into the dispenser.



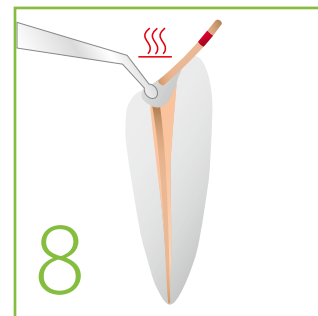
**STEP 5:**  
Dispense GuttaFlow® into the canal until you can see the material.



**STEP 6:**  
Then coat the masterpoint with GuttaFlow®.



**STEP 7:**  
Then permanently place the master point and fill the remaining canal space with GuttaFlow®.



**STEP 8:**  
Finally shorten the master point with a hot instrument.

## Clinically tested

### Clinical study

Clinical investigations are organised in the framework of a multi-center study under the direction of NIOM (Norwegian Institute for Dental Material Testing) and conducted in clinics in Germany, Norway and the USA.

The preliminary closing study report shows excellent healing results. On the basis of the PAI Scoring system, success rates of 0.7 – 0.8 were measured which have been documented over a period of one year.

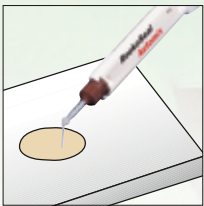
### Further Studies

A wide range of further studies on GuttaFlow® has already been conducted. You can find these under [www.coltene.com](http://www.coltene.com).

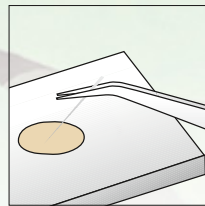
# One exceptional sealer Two easy techniques

## roeko RoekoSeal Automix

- ready-to-use
- dispenses just the quantity required
- homogeneously and hygienically mixed and free of air bubbles
- easy to use



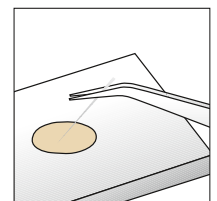
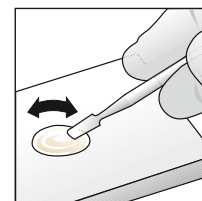
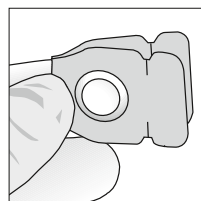
Slight pressure on the plunger and premixed sealer is dispensed from the tip



Introduce RoekoSeal into the canal and down to the apex with a guttapercha point

## roeko RoekoSeal Single Dose

- individual portions
- hygienic
- easy to use
- perfect for pre-appointment set-up
- sufficient material to treat one multi-rooted tooth



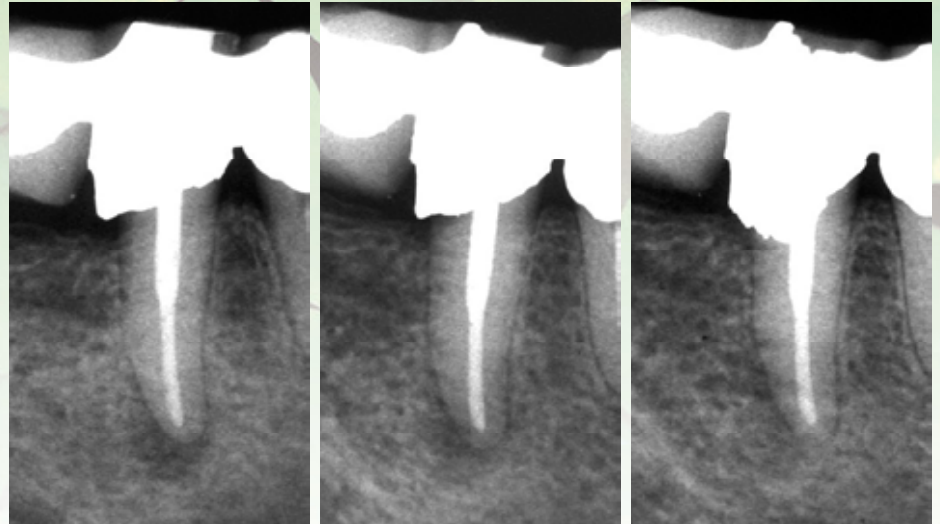
RoekoSeal is an exceptional root canal sealer. Its chemical and physical properties fulfil all the requirements of a root canal sealer. RoekoSeal combines exceptional material properties such as excellent flowability, no shrinkage and biocompatibility with practical handling. There is no risk of incor-

rect mixing. RoekoSeal provides an excellent seal and sets new standards in quality and biocompatibility in endodontics. RoekoSeal flows so well that the root canal and lateral canals are filled effectively. The result, a tight seal, can be checked effectively on the radiograph.

# Clinically tested

## Clinical study

The results of the study demonstrate clearly that the periapical periodontitis has healed well and show the clinical success of RoekoSeal.



obturation

3 months

12 months

The clinical studies were organised and co-ordinated by NIOM. The reference material was a non commercially produced material based on ZOE (Grossman Sealer). 199 cases of teeth with periapical lesions were chosen and the healing processes observed.

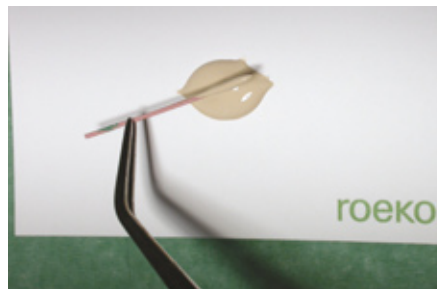
The study was published in Journal of Endodontics 2003 Apr; 36(4):296-301

# Application

## The root canal is dried with Roeko Paper points



## Application of RoekoSeal with Roeko Guttapercha point



## Positioning in the canal






## Sealed root canal



# Order form

<b>GuttaFlow®</b>	REF	Quantity
Introkit:	349 120	
20 GuttaFlow® Capsules		
20 Canal Tips + Stops		
3 Adapters for RotoMix™ *		
1 Dispenser		
100 Retention Points ISO 30-60		
60 Guttapercha points Greater Taper 0.04 20-45		
<b>GuttaFlow® FAST</b>		
Introkit:	349 220	
20 GuttaFlow® FAST Capsules		
20 Canal Tips + Stops		
3 Adapters for RotoMix™ *		
1 Dispenser		
100 Retention Points ISO 30-60		
60 Guttapercha points Greater Taper 0.04 20-45		
GuttaFlow® refill pack:	349 130	
20 GuttaFlow® Capsules		
20 Canal Tips + Stops		
GuttaFlow® FAST refill pack:	349 230	
20 GuttaFlow® Capsules		
20 Canal Tips + Stops		
Refill pack:	349 132	
20 Canal Tips + Stops		
Refill pack:	349 134	
20 Combi Tips + Stops		
Refill pack:	349 133	
3 Adapters for RotoMix™ *		

\* RotoMix™ is not a trademark of Coltène/Wahledent

<b>RoekoSeal Automix</b>	REF	Quantity
Set 	349 100	
Refill Syringe 	349 102	
Refill Tips 	349 105	
<b>RoekoSeal Single Dose</b> (40 pcs)	349 103	

<b>Endo-Frost</b> (200 ml)	240 000	
<b>Endo-Frost Pellets</b> (500 pcs)	240 001	
<b>H-Files</b> (6 pcs)	ISO size	Quantity
<b>K-Files</b> (6 pcs)		
<b>Reamers</b> (6 pcs)		
<b>Stopper</b> (50 pcs)	331 000	

www.coltenewhaledent.com  
© 2010 Coltène/Wahledent GmbH + Co. KG

**Coltène/Wahledent GmbH + Co. KG**  
Raiffeisenstraße 30  
89129 Langenau/Germany  
Tel. +49 (0)7345 805 0  
Fax +49 (0)7345 805 201  
info@coltenewhaledent.de

<b>Endo Gauges</b>	REF	Quantity
Type C	330 001	
Type CS	330 002	
<b>Endo-Rac</b>	332 000	
<b>Steribox</b>	332 010	
<b>Roeko CanalBrush™</b>	REF	Quantity
Size S, 10 pcs. + stops	378 020	
20 pcs. + stops	378 120	
50 pcs. + stops	378 220	
Size M, 10 pcs. + stops	378 025	
20 pcs. + stops	378 125	
50 pcs. + stops	378 225	
Size L, 10 pcs. + stops	378 030	
20 pcs. + stops	378 130	
50 pcs. + stops	378 230	
Size L, 10 pcs. + stops	378 030	
Assortment (S, M, L), 30 pcs. + stops	378 000	
<b>Flexi Dam non latex</b> (30 pcs)		
violet	390 035	
blue	390 033	
<b>Roeko Punch</b>	390 010	
<b>Roeko Clamp Forceps</b>	390 011	
<b>Roeko Clamps</b>	REF	Quantity
<b>Roeko Plastic frame, foldable</b>	390 041	
<b>Surgitip-micro</b> (20 pcs)	462 012	
<b>activ point</b>	ISO size	Quantity
<b>Ca(OH)<sub>2</sub> PLUS points</b>	ISO size	Quantity
<b>Paper points</b>	ISO size	Quantity
Top color		
<b>Guttapercha points</b>	ISO size	Quantity
Top color		
<b>Greater Taper points</b>	ISO size	Quantity
<b>Retention Points</b>	ISO size	Quantity
<b>Spreader NiTi</b>	ISO size	
<b>Pluggger</b>	ISO size	

**Coltène/Wahledent AG**  
Feldwiesenstrasse 20  
9450 Altstätten/Switzerland  
Tel. +41 (0)71 757 53 00  
Fax +41 (0)71 757 53 01  
info@coltenewhaledent.ch

**Coltène/Wahledent Inc.**  
235 Ascot Parkway  
Cuyahoga Falls, Ohio 44223/USA  
Tel. +1 330 916 8800  
Fax +1 330 916 7077  
info@coltenewhaledent.com

**Coltène/Wahledent Ltd.**  
The President Suite-A  
Kendal House, Burgess Hill  
Victoria Way  
West Sussex, RH15 9NF/U.K.  
Tel. +44 (0)1444 235486  
Fax +44 (0)1444 870640  
info@coltenewhaledent.co.uk

**coltène whaledent**