

3M Science.
Applied to Life.™

3M™ ESPE™ Filtek™ Supreme XTE

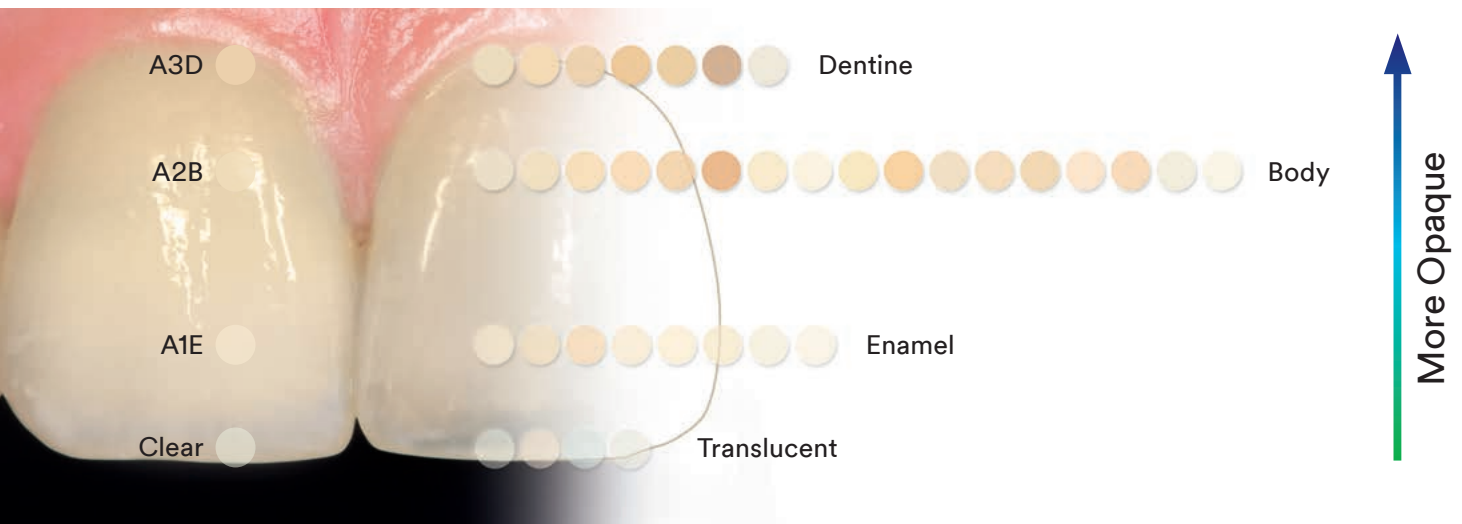
**100 % nanofiller technology.
For a naturally beautiful smile.**



Versatile layer technology. For lifelike aesthetics.

As versatile as your requirements: With 36 colour shades in four opacities, 3M™ ESPE™ Filtek™ Supreme XTE Universal Composite can be equally applied in the monolayer, dual layer and multilayer technique.

You appreciate a flowable composite? Thanks to its “flow-on-demand” behaviour, Filtek™ Supreme XTE Flowable flows to where it is needed and remains as stable as you desire.



Lifelike, durable aesthetics

- Unsurpassed polish retention
- Excellent wear resistance
- Enhanced fluorescence

Wide variety of possible applications

- 36 shades in four opacities
- Wide range of body shades for single shade restorations

Easy to use

- Non-sticky handling
- Capsules and syringes colour-coded by opacity
- Easy-to-read labels



High abrasion resistance. For a long lasting, brilliant result.



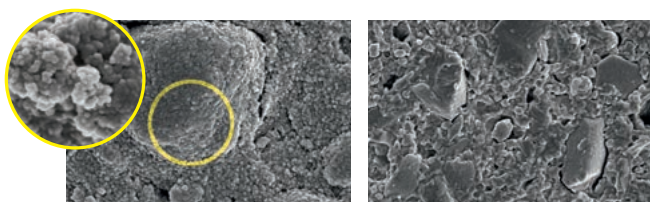
A 5-year clinical study* evaluated the abrasion resistance of 3M™ ESPE™ Filtek™ Supreme XTE Universal. The result is impressive: No statistically significant difference between the product and enamel was detected. These photos show the gloss retention of Filtek Supreme XTE compared against competitors after simulation of 6,000 toothbrush cycles.

Source: Internal research of 3M. Results available in the Technical Product Profile at www.3MESPE.com.

*Source: Professor Paul Lambrechts and colleagues, Catholic University Leuven, Belgium. Data available from 3M on request. Contact information see back page.

Gloss retention you can rely on.

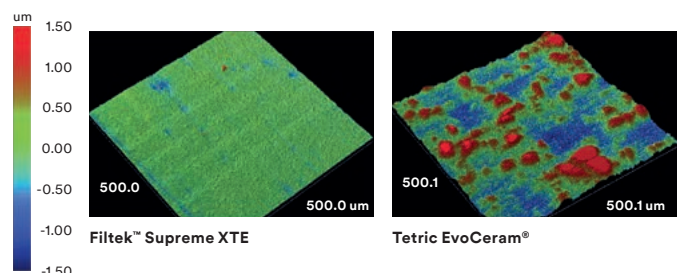
100% nanofiller technology leads to the homogeneous allocation of nanoparticles, which also form the unique nanoclusters, produced by a patented process. In contrast, most other composites, including micro- and nanohybrids, incorporate larger particles that result in significant roughness when abraded.



Filtek™ Supreme XTE nanocluster

Tetric EvoCeram®

SEM photos courtesy of Dr. J. Perdigao, University of Minnesota.



Filtek™ Supreme XTE

Tetric EvoCeram®

This optical analysis compares the surfaces of Tetric EvoCeram® and Filtek™ Supreme XTE Universal Restorative (Dentine, Enamel, Body shade) after toothbrush abrasion.

Source: Internal research of 3M. Results available in the Technical Product Profile at www.3MESPE.com.

Style Italiano. For a bright, natural smile.



With the simply reproducible dual-shade layer technique of Style Italiano it takes just a few steps to create a highly aesthetic restoration that reproduces the appearance of natural teeth in a lifelike manner. To do this, you only need two opacities of 3M™ ESPE™ Filtek™ Supreme XTE Universal Composites and the exclusive colour formulae of Style Italiano. See for yourself how easily you can achieve immaculate aesthetics:

Case study: Class III Composite Restoration



1 Adult patient with fractured restoration on central incisor and discolored composite on lateral incisor.



2 Shade selection with the A3 and A4 shade tabs made from Filtek™ Supreme XTE Universal Restorative using the "My Shade Guide Mini Kit - Smile Line".



3 The A4 shade is chosen as the best match.



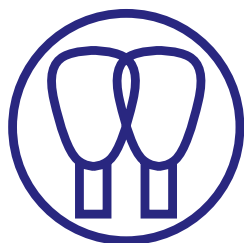
4 Final preparation prior to bonding procedure.



5 Placement of the A4 Dentin layer, leaving place for the 0.5mm Body layer.



6 Placement of the inter-proximal matrix followed by the restoration of the distal wall of the central incisor and application of the final layer, A4 Body.



Filtek™ Supreme XTE Universal Restorative Recipe

A4 Dentine + A4 Body = A4



7 Final Restoration.

3M™ ESPE™ Filtek™ Supreme XTE.
Perfect team play for
immaculate results.



Ordering Information

Item No.	Product Information
	Filtek™ Supreme XTE Universal Restorative
4911S	Filtek™ Supreme XTE Universal Restorative Single Shade Introductory Kit – Capsule Kit includes: 40 – 0.2 g capsules: 20 each of Body shades A2 and A3; Technique Guide; Instructions for Use
4910S	Filtek™ Supreme XTE Universal Restorative Single Shade Introductory Kit – Syringe Kit includes: 4 – 3 g syringes: 2 each of Body shades A2 and A3; Technique Guide; Instructions for Use
4911D	Filtek™ Supreme XTE Universal Restorative Dual Shade Introductory Kit – Capsule Kit includes: 40 – 0.2 g capsules: 10 each of Dentine shades A3, A4, and Enamel shades A2, A3; 1 Shade Selector Wheel; Technique Guide; Instructions for Use
4910D	Filtek™ Supreme XTE Universal Restorative Dual Shade Introductory Kit – Syringe Kit includes: 4 – 3 g syringes: 1 each of Dentine shades A3, A4, and Enamel shades A2, A3; 1 Shade Selector Wheel; Technique Guide; Instructions for Use
4911P	Filtek™ Supreme XTE Universal Restorative Professional Kit – Capsule Kit includes: 160 – 0.2 g capsules in plastic reusable case: 10 each of Dentine shades: A2, A3, A4 20 each of Body shades: A2, A3, A3.5, A4 10 each of Enamel shades: A1, A2, A3, W 10 each of Translucent shades: AT 1 Shade Selector Wheel; Technique Guide; Instructions for Use
4910P	Filtek™ Supreme XTE Universal Restorative Professional Kit – Syringe Kit includes: 12 – 3 g syringes each of shades: Dentine shades: A2, A3, A4 Body shades: A2, A3, A3.5, A4 Enamel shades: A1, A2, A3, W Translucent shades: AT 1 Shade Selector Wheel; Technique Guide; Instructions for Use



3M Shade Selector Wheel simplifies the selection process and serves as a guide for placing one to four shades of composite. Included in every Dual-Shade Kit and Professional Kit.



Filtek™ Supreme XTE Flowable Restorative.

Refills – Universal

Shades	Syringe	Capsule
A1D	4910A1D	4911A1D
A2D	4910A2D	4911A2D
A3D	4910A3D	4911A3D
A4D	4910A4D	4911A4D
B3D	4910B3D	4911B3D
C4D	4910C4D	4911C4D
White	4910WD	4911WD
Body shades	Syringe	Capsule
A1B	4920D2	4911A1B
A2B	4920W	4911A2B
A3B	4920XW	4911A3B
A3.5B	4920OA3	4911A3.5B
A4B	4910A4B	4911A4B
A6B	4910A6B	4911A6B
B1B	4910B1B	4911B1B
B2B	4910B2B	4911B2B
B3B	4910B3B	4911B3B
B5B	4910B5B	4911B5B
C1B	4910C1B	4911C1B
C2B	4910C2B	4911C2B
C3B	4910C3B	4911C3B
D2B	4910D2B	4911D2B
D3B	4910D3B	4911D3B
White	4910WB	4911WB
Extra White	4910XWB	4911XWB
Enamel shades	Syringe	Capsule
A1E	4910A1E	4911A1E
A2E	4910A2E	4911A2E
A3E	4910A3E	4911A3E
B1E	4910B1E	4911B1E
B2E	4910B2E	4911B2E
D2E	4910D2E	4911D2E
White	4910WE	4911WE
Extra White	4910XWE	4911XWE
Translucent shades	Syringe	Capsule
Clear	4910CT	4911CT
Blue	4910BT	4911BT
Grey	4910GT	4911GT
Amber	4910AT	4911AT

Syringe shade refills include 1 – 3 g syringe; Capsule shade refills: Dentine, Enamel and Translucent Shade Refills include 10 – 0.2 g capsules; Body Shade Refills include 20 – 0.2 g capsules; Instructions for Use.

Refills – Flowable

Shades	Syringe	Capsule
A1	4920A1	4921A1
A2	4920A2	4921A2
A3	4920A3	4921A3
A3.5	4920A3.5	4921A3.5
A4	4920A4	4921A4
B1	4920B1	4921B1
B2	4920B2	4921B2
C2	4920C2	4921C2
D2	4920D2	4921D2
White	4920W	4921W
Extra White	4920XW	4921XW
OA3	4920OA3	4921OA3

Syringe refills: a shades include 2 – 2 g syringes; 20 dispensing tips; all other shades include 1 – 2 g syringe; 20 dispensing tips; Instructions for Use.

Capsule refills: a shades include 20 – 0.2 g capsules; all other shades include 10 – 0.2 g capsules; Instructions for Use.

www.3MESPE.com



3M Deutschland GmbH
ESPE Platz · 82229 Seefeld
Germany
info3mespe@mmm.com
www.3MESPE.com

3M, 3M Science. Applied to Life., ESPE and Filtek are trademarks of 3M Company or 3M Deutschland GmbH. Used under license in Canada. All other trademarks are owned by other companies. © 3M 2016. All rights reserved.

70200953571/12 (04.2016)