

Finally: secure retention, removal of restorations

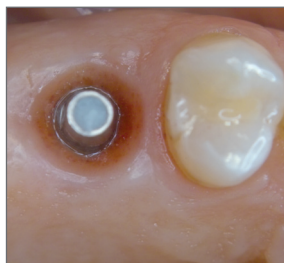
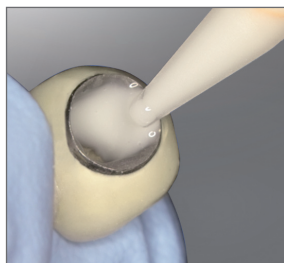
without damage

"... excellent adhesive properties, a low layer thickness and high marginal tightness."*

(Ernst-Moritz-Arndt-University Greifswald)

implantlink® semi

The first removable semi-permanent cement for implant restorations



- interlocking, masticatory-stable cementing
- significantly lower displacement resistance than conventional cements
- extremely low layer thickness, only 8 µm for maximum fitting accuracy
- ultimate marginal gap sealing through highly cross-linked, non-brittle polymer structure
- residues can be effortlessly removed (large pieces, no crumbling)
- damage-free removal of the restoration
- flexible processing times with the dual curing system
- compatible with all material combinations
- colour: natural opaque for screening metallic abutments
- antibacterial, eugenol-free, odourless & tasteless



*Materials' sciences test with temporary cements (Dept. for dental propaedeutics/Community Dentistry, Center for ZMK, Ernst-Moritz-Arndt-University Greifswald) 1/2009