

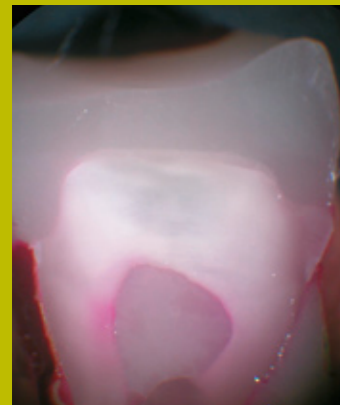


ParaBond®

ParaBond consists of a Non-Rinse Conditioner and a chemical cured Adhesive, which is ideal for situations where light might not penetrate, such as for post cementation. The adhesive system ideally complements ParaCore to ensure for long-lasting post & core restorations with outstanding sealing properties, an optimal bond interface and excellent retention.

WHY WE STILL BOND?

- Effectively seals and protects the restoration against marginal microleakage to minimize the risk of postoperative complications.
- Delivers high shear bond strength to dentin and enamel for reliable, long-lasting adhesive cementation.
- Creates an optimal bond interface between the dentin-cement-post to enhance retention of the post inside the root canal.

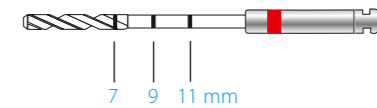


Cementation with ParaBond.

1) Dr. B. Millar, Dr. S. Deb, King's College London Dental Institute, Oct. 2008

Ordering Information

ParaPost® FIBER LUX™



PF 170 ParaPost® Fiber Lux™ Intro Kit

2 Posts, 1 Fiber Lux Drill,	Size 3,	Brown,	(Ø 0.90 mm)
3 Posts, 1 Fiber Lux Drill,	Size 4,	Yellow,	(Ø 1.00 mm)
3 Posts, 1 Fiber Lux Drill,	Size 4.5,	Blue,	(Ø 1.14 mm)
3 Posts, 1 Fiber Lux Drill,	Size 5,	Red,	(Ø 1.25 mm)
2 Posts, 1 Fiber Lux Drill,	Size 5.5,	Purple,	(Ø 1.40 mm)
2 Posts, 1 Fiber Lux Drill,	Size 6,	Black,	(Ø 1.50 mm)
1 Universal Hand Driver			

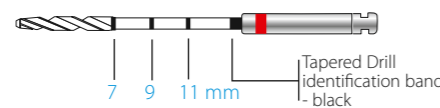
ParaPost® Fiber Lux™ Refills (5 Posts/Refill):

PF 171 3	Size 3,	Brown,	(Ø 0.90 mm)
PF 171 4	Size 4,	Yellow,	(Ø 1.00 mm)
PF 171 45	Size 4.5,	Blue,	(Ø 1.14 mm)
PF 171 5	Size 5,	Red,	(Ø 1.25 mm)
PF 171 55	Size 5.5,	Purple,	(Ø 1.40 mm)
PF 171 6	Size 6,	Black,	(Ø 1.50 mm)

ParaPost® Fiber Lux™ Drill Refills (parallel design; compatible with all ParaPost® Posts)

P 42 3	3 ParaPost® X™ System Drills,	Size 3,	Brown,	(Ø 0.90 mm)
P 42 4	3 ParaPost® X™ System Drills,	Size 4,	Yellow,	(Ø 1.00 mm)
P 42 45	3 ParaPost® X™ System Drills,	Size 4.5,	Blue,	(Ø 1.14 mm)
P 42 5	3 ParaPost® X™ System Drills,	Size 5,	Red,	(Ø 1.25 mm)
P 42 55	3 ParaPost® X™ System Drills,	Size 5.5,	Purple,	(Ø 1.40 mm)
P 42 6	3 ParaPost® X™ System Drills,	Size 6,	Black,	(Ø 1.50 mm)
P 42 A	6 ParaPost® X™ System Drills,	1 of Size (3 to 6)		

ParaPost® TAPER LUX™



PF 180 ParaPost® Taper Lux™ Intro Kit

5 Posts, 1 Taper Lux Drill,	Size 4.5,	Blue,	(Ø 1.14 mm)
5 Posts, 1 Taper Lux Drill,	Size 5,	Red,	(Ø 1.25 mm)
3 Posts, 1 Taper Lux Drill,	Size 5.5,	Purple,	(Ø 1.40 mm)
2 Posts, 1 Taper Lux Drill,	Size 6,	Black,	(Ø 1.50 mm)
1 Universal Hand Driver			

ParaPost® Taper Lux™ Refills (5 Posts/Refill):

PF 181 45	Size 4.5,	Blue,	(Ø 1.14 mm)
PF 181 5	Size 5,	Red,	(Ø 1.25 mm)
PF 181 55	Size 5.5,	Purple,	(Ø 1.40 mm)
PF 181 6	Size 6,	Black,	(Ø 1.50 mm)

ParaPost® Taper Lux™ Drill Refills (tapered design; only compatible with ParaPost® Taper Lux™ Posts)

P 82 45	3 ParaPost® Taper Lux Drills,	Size 4.5,	Blue,	(Ø 1.14 mm)
P 82 5	3 ParaPost® Taper Lux Drills,	Size 5,	Red,	(Ø 1.25 mm)
P 82 55	3 ParaPost® Taper Lux Drills,	Size 5.5,	Purple,	(Ø 1.40 mm)
P 82 6	3 ParaPost® Taper Lux Drills,	Size 6,	Black,	(Ø 1.50 mm)
P 82 A	4 ParaPost® Taper Lux Drills,	1 of Size (4.5 to 6)		

ParaCore®

ParaCore 5 ml Syringe:

5885 ParaCore Intro Kit	2 x 5 ml ParaCore syringe dentin
	2 x 5 ml ParaCore syringe white
	3 x 3 ml ParaBond Non-Rinse Conditioner + Adhesive A & B
	20 x Mixing / Root Canal Tips

5886 ParaCore Refill - white

2 x 5 ml ParaCore syringe white
20 x Mixing / Root Canal Tips

5887 ParaCore Refill - dentin

2 x 5ml ParaCore syringe dentin
20 x Mixing / Root Canal Tips

6747 Mixing / Root Canal Tips

40 x Mixing Tip Brown short super fine
6759 Mixing Tips
40 x Mixing Tip Brown short fine



ParaCore 25 ml Cartridge:

1500 ParaCore Intro Kit - dentin + dispenser	1 x 25 ml ParaCore cartridge dentin
	3 x 3 ml ParaBond Non-Rinse Conditioner + Adhesive A & B
	20 x Mixing Tips & Oral Tips

1501 ParaCore Intro Kit - dentin

1 x 25 ml ParaCore cartridge dentin
3 x 3 ml ParaBond Non-Rinse Conditioner + Adhesive A & B
20 x Mixing Tips & Oral Tips

1502 ParaCore Intro Kit - white + dispenser

1 x 25 ml ParaCore cartridge white
3 x 3 ml ParaBond Non-Rinse Conditioner + Adhesive A & B
20 x Mixing Tips & Oral Tips

1503 ParaCore Intro Kit - white

1 x 25 ml ParaCore cartridge white
3 x 3 ml ParaBond Non-Rinse Conditioner + Adhesive A & B
20 x Mixing Tips & Oral Tips

5853 ParaCore Refill - dentin

2 x 25 ml ParaCore syringe dentin
20 x Mixing Tips & Oral Tips

5854 ParaCore Refill - white

2 x 25ml ParaCore syringe white
20 x Mixing Tips & Oral Tips

6550 Mixing Tips

40 x Mixing Tips Yellow

6555 Oral Tips

100 x Oral Tips

4470 Dispenser



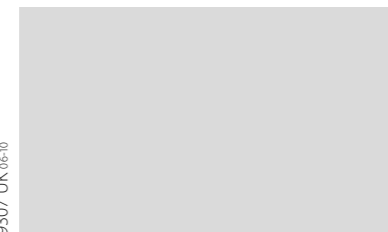
ParaForm®

5860 ParaForm Complete Set	50 assorted Coreformers in 10 Sizes
5861 ParaForm Sample Kit	10 assorted Coreformers
5871 - 5880 ParaForm Refill # 1 - # 10	Each size individually available in 10 pcs. / pack

ParaBond®

7486 ParaBond Adhesive	3 x 3 ml ParaBond Non-Rinse Conditioner + Adhesive A & B
7493 ParaBond Adhesive A&B Refill	2 x 3 ml ParaBond Adhesive A & B
7494 ParaBond Non-Rinse Conditioner Refill	1 x 3 ml ParaBond Non-Rinse Conditioner

www.coltenewhaledent.com
© 2010 Coltène/Whaledent



Coltène/Whaledent Ltd.

The President Suite-A
Kendal House, Burgess Hill
Victoria Way
West Sussex, RH15 9NF/U.K.
Tel. +44 (0)1444 235486
Fax +44 (0)1444 870640
info@coltenewhaledent.co.uk

Coltène/Whaledent Inc.

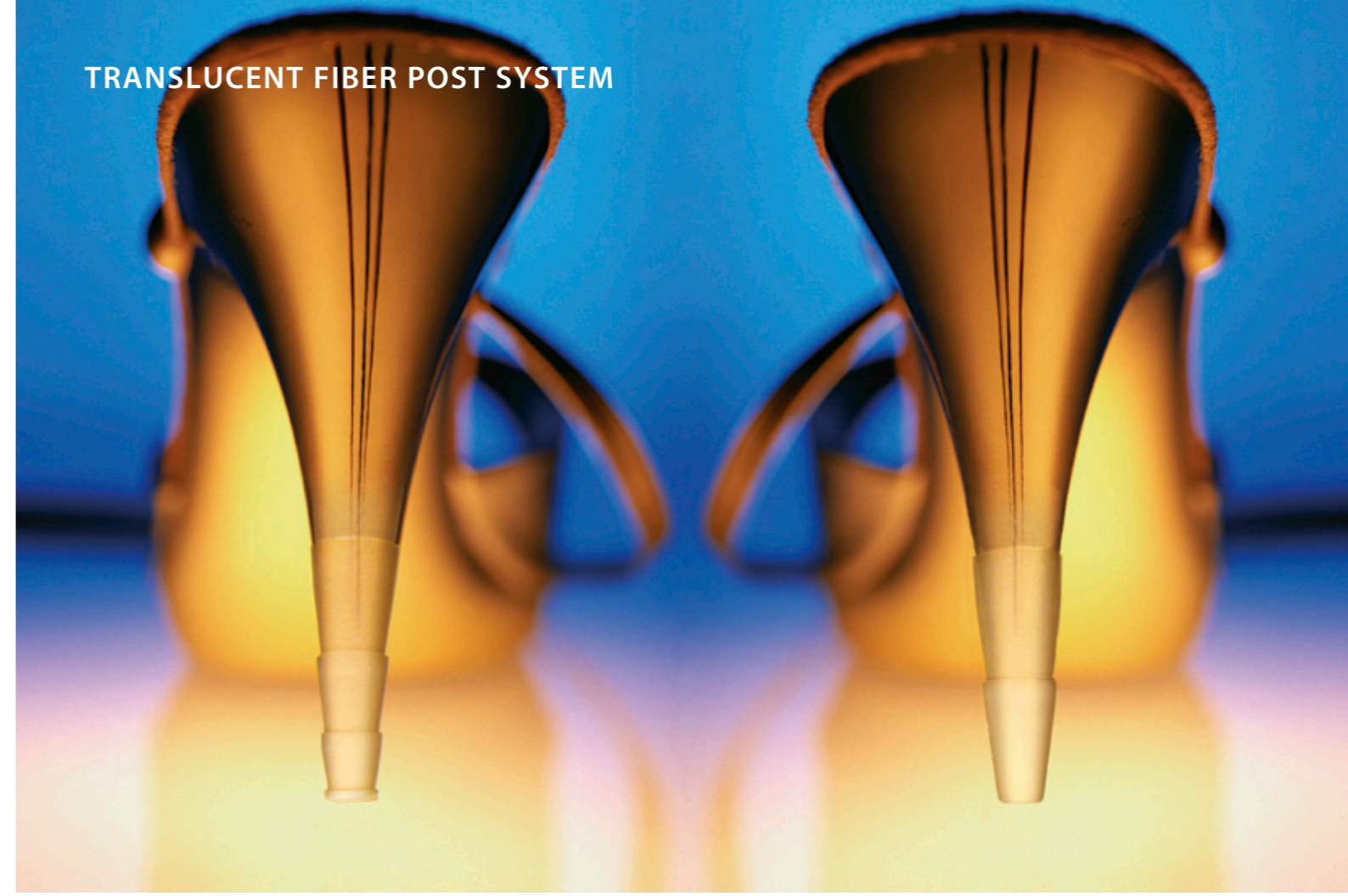
235 Ascot Parkway
Cuyahoga Falls, Ohio 44223/USA
Tel. +1 330 916 8800
Fax +1 330 916 7077
info@coltenewhaledent.com

Coltène/Whaledent AG

Feldwiesenstrasse 20
9450 Altstätten/Switzerland
Tel. +41 (0)71 757 53 00
Fax +41 (0)71 757 53 01
info@coltenewhaledent.ch



TRANSLUCENT FIBER POST SYSTEM



ParaPost® Fiber Posts

Esthetics requires a solid base.



The complete esthetic post & core system

Over the past decade, Coltène/Whaledent has delivered clinically successful esthetic post and core systems with components designed to optimally compliment each other. The ParaPost® Esthetic System reflects upon over 4 decades of Coltène/Whaledent competence within the areas of endodontic posts, composites and bonding systems, which have provided the dental care community with clinically proven and safe solutions.

Indication-Driven Glass Fiber Posts

ParaPost® FIBER LUX™ Parallel Post Design



- ideal for normal-shaped root canals
- 6 color-coded sizes
- compatible with all ParaPost® Drills



ParaPost® TAPER LUX™ Tapered Post Design



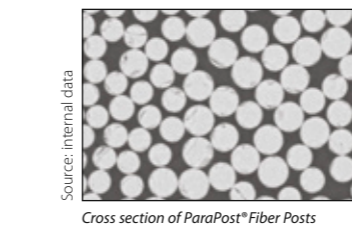
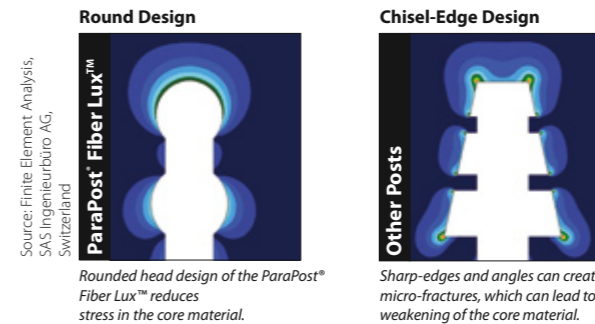
- 4% tapered design for narrow-shaped and fragile root canals
- Provides a good apical fit in canals prepared using the crown-down greater taper file technique
- 4 color-coded sizes
- Only compatible with ParaPost® Taper Lux™ Drills

4% taper

1.5 mm

Post Head Design for Greater Stability

The special retention head design from ParaPost® Fiber Lux™ and Taper Lux™ is rounded with undercuts to help prevent stress in the core material. These properties remain intact, even if the post length is adjusted occlusally from its multi-head design, to allow for occlusal conformity without a problem.



Superior Strength

The high percentage of uni-directional glass fibers ensures for excellent structural strength characteristics, without compromising its dentin-like flexibility.

Filler Composition		Physical Properties	
Glass Fiber	60 %	Flexural Strength	1600 MPa
Resin	40 %	Compressive Strength	630 MPa
		Tensile Strength	1475 MPa
		Modulus of Elasticity	45 GPa

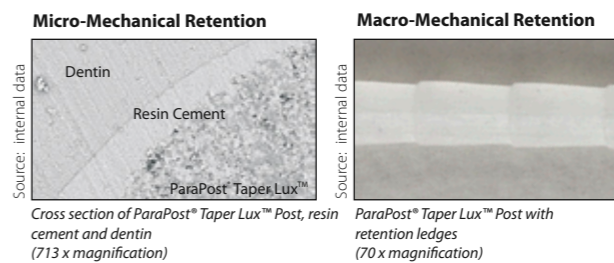
Quick, On-Command Post Cementation

ParaPost® Fiber Lux™ and Taper Lux™ are made of a translucent, light-transmitting glass-fiber resin matrix. This allows immediate fixation to dual- and light-cured resin cements and core materials using light polymerisation, without any pre-treatment required to the post.

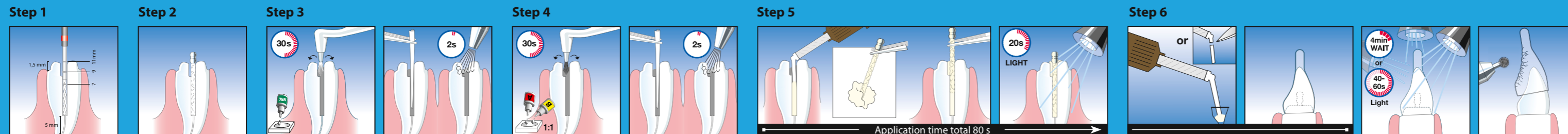


Exceptional Adhesive Retention

ParaPost® Fiber Lux™ and Taper Lux™ provide micro- and macro-mechanical retention to dual- and self-curing resin cements and composite-based core materials to ensure for a homogeneous restoration.



Post cementation and core build up in one



Prepare the post space using a ParaPost® Fiber Lux™ Drill.

Trial seat the ParaPost® Fiber Lux™ Post. If necessary, adjust the post length accordingly.

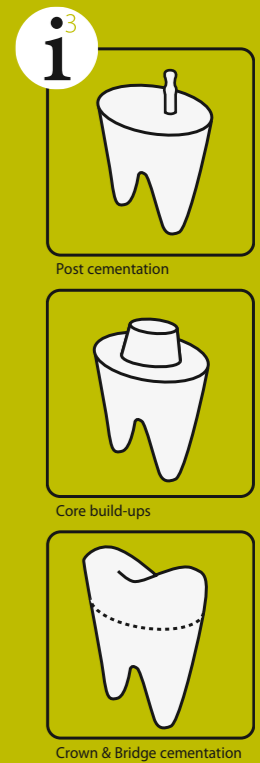
Condition the root canal using ParaBond® Non-Rinse Conditioner. Remove excess Non-Rinse Conditioner using paper points. Dry the root canal using a gentle stream of air.

Apply mixed ParaBond® Adhesive A and B into the prepared post space preparation. Remove excess ParaBond® Adhesive using paper points. Dry the adhesive bond layer using a gentle stream of air.

Apply ParaCore® 5ml syringe material directly into the root canal. Coat the ParaPost® Fiber Lux™ Post with the ParaCore® material and position it into the root canal. Remove excess ParaCore® material and light cure (if desired).

Fill the ParaPost® ParaForm® Coreformer with ParaCore® material. Position the filled ParaPost® ParaForm® Coreformer. Remove excess ParaCore® core material and light cure. Remove the ParaPost® ParaForm® Coreformer. Complete restoration accordingly.

DUAL CURED CORE & RESIN CEMENT

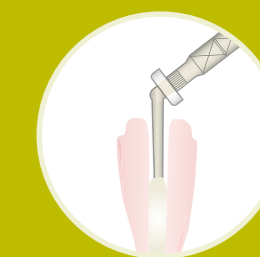


ParaCore® 3 indications – 1 material

ParaCore® dual cured, glass-reinforced composite resin, which is radiopaque and available in two shades (dentin & white), builds upon decades of competence and experience in the area of composites, bonding technology and endodontic posts.

- One material for 3 indications (post cementation, core build-ups, and crown & bridge cementation)
- Comfortable mixing and dispensing
- Outstanding handling properties
- Superior and durable strength

NEW: Faster and Easier Post Cementation



ParaCore® 5ml
Root Canal Mixing Tip for direct application into the root canal.