

UNIVERSAL NANO COMPOSITE



SYNERGY[®]D6
beauty made simple

 **COLTENE**



SYNERGY®D6

EASY AND AESTHETIC

SYNERGY D6 IS AN IMPRESSIVE ULTRA-MODERN FILLING MATERIAL

- non-sticky
- good sculptability
- high resistance to the operating lamp
- low shrinkage
- quick, excellent polishability

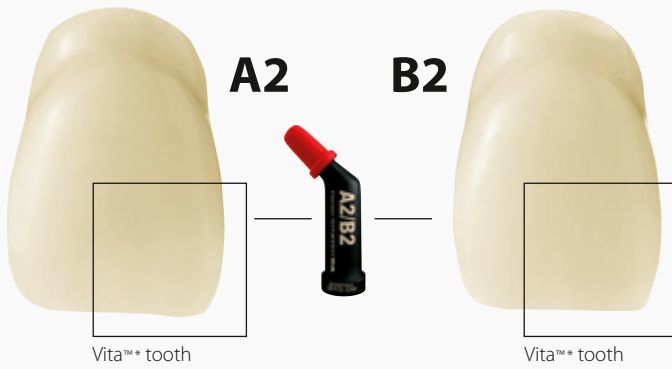
Nanofilled SYNERGY D6 universal composite greatly simplifies filling treatment. The SYNERGY D6 range comprises only 6 dentine shades, 2 enamel shades and 1 bleach shade. The excellent optical self-blend properties of the composite ensure that the system can cater for a wide range of shades. Two translucent enamel shades are ideal as enamel substitutes in the two-layer technique and for optimising the natural aesthetics.

Dr. med. dent. Mario J. Besek
Swiss Dental Center, Zürich, Switzerland

In contrast to commercially available "aesthetic composites", SYNERGY D6 is a simplified system for routine use that requires less effort, yet produces comparable or better results. Six dentine shades are available, which blend together so that fewer individual shades are required. The secret is in the chameleon effect with a balanced opacity and homogenised translucency, which are used for aesthetically reproducing the shade of the natural tooth shade. Two enamel shades – universal and opalescent – complete the system and can also be layered as required.

The working consistency has been optimally selected for the operator in all the required parameters that are important during sculpting and finishing.

In summary, SYNERGY D6 is a viable, all-purpose practice system that successfully produces aesthetic results in the anterior and posterior region using a simple technique.



TWO-SHADE CONCEPT

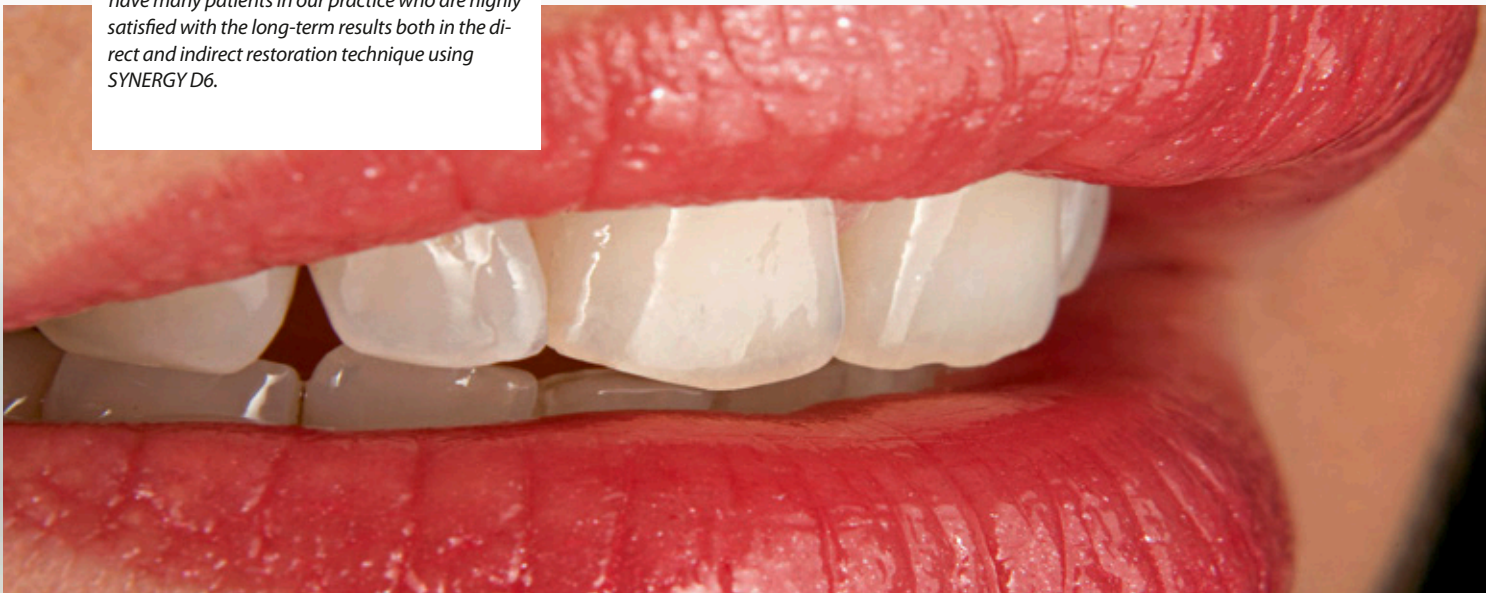
SYNERGY D6 dentine A2/B2 corresponds to a natural dentine with a shade range between the Vita shades A2 and B2. The amazing self-blend properties are an integral part of the shade concept and greatly simplifies shade selection that corresponds to natural dentine.

EXAMPLE | In the majority of cases only SYNERGY D6 dentine is required for high-quality standard filling treatment in order to produce aesthetic and completely inconspicuous restorations.

Highly aesthetic characterisation can be added, if required, using the two enamel composites (universal and white opalescent) and the bleach shade for aesthetic and completely life-like restorations.

Dr. med. dent. Ralph Schönemann
Augsburg, Germany

SYNERGY D6 promises a lot and delivers much more. In my opinion, this material has the ideal consistency for sculpting both the smooth lateral tooth surfaces and complex morphologies of a characteristic molar. A successful shade match is predictable and easy to reproduce. The shade system range covers 90% of cases. The material is very easy to polish and attains a durable lustre. We have many patients in our practice who are highly satisfied with the long-term results both in the direct and indirect restoration technique using SYNERGY D6.



QUICK, DURABLE LUSTRE

OUTSTANDING POLISHABILITY | SYNERGY D6 fillings can be polished to a durable lustre in minimum time. This is due to the particle size and distribution of the filler materials.

DURABLE AESTHETICS | SYNERGY D6 is ideally tailored to the daily demands – ensuring an excellent, aesthetic and cost-effective filling.



OUTSTANDING HANDLING PROPERTIES



SYNERGY D6



Product X



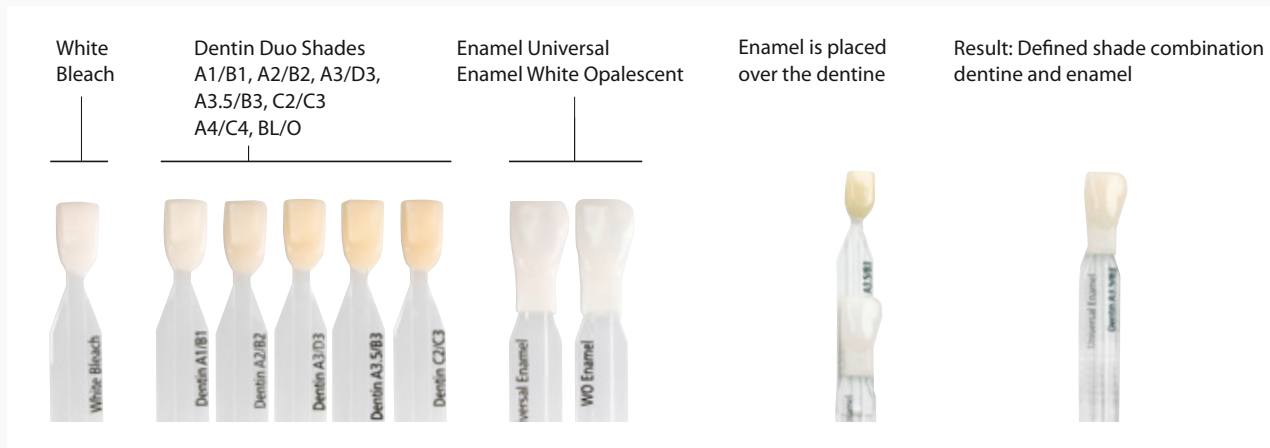
Product Y

DIMENSIONAL STABILITY | Equal amounts of composite were pressed flat to the same thickness at 37 °C/ 98 °F using a grid. The following photographs were taken after 1 minute.

At the intraoral temperature the dimensionally stable SYNERGY D6 retained the prepared contours until it was light cured.

«The study "Dimensional stability during contouring of composite material" by Yu-Chih Chiang, Alena Knezevic and Karl-Heinz Kunzelmann demonstrated that SYNERGY D6 and Miris exhibited comparable, minimal deformation values. The deformation flow of other materials was up to 400% higher than that of SYNERGY D6 and Miris.»

UNIQUE SYNERGY D6 SHADE GUIDE

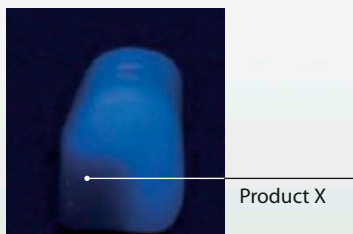


The shade guide is fabricated from SYNERGY D6. This guarantees that the selected shade and restoration match.

EXCELLENT PHYSICAL PROPERTIES

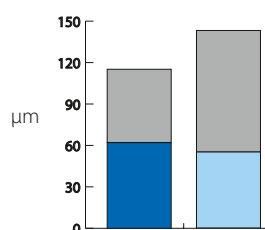
FLUORESCENCE | SYNERGY D6 incorporates a fluorescent agent, which emits visible light when exposed to UV light. This produces a natural brilliance and vitality under different lighting conditions.

ABRASION RESISTANCE | A 1-year study by "The Dental Advisor" (Volume 26, No. 2 SYNERGY D6) verified that 98% of SYNERGY D6 users rated the abrasion resistance as excellent.



Optimised abrasion resistance

- Antagonist natural enamel
- SYNERGY D6 restoration
- Natural enamel



Total wear after 1,200,000 cycles (equal to 5 years in vivo) measurement at the University of Geneva/Zürich

Technical data

Flexural modulus	9000 MPa
Flexural strength	127 MPa
Water sorption	16µg/mm ³
Water solubility	0.9µg/mm ³
Radiopacity	2 mm Al
Vickers hardness	73 kg/mm ²
Volumetric shrinkage	2.1%
Compressive strength	392 MPa
Minimum filler particle size	20 nm
Average filler particle size	0.6µm
Filler content by weight	80%
Filler content by volume	65%
Density	2.0 g/cm ³

SIMPLE FILLING TREATMENT USING ONE MATERIAL



POSTERIOR TOOTH | The non-sticky, dimensionally stable material enables very easy contouring and creation of contact points. Further characteristics of SYNERGY D6 are its excellent pliability and wettability ensuring easy application.

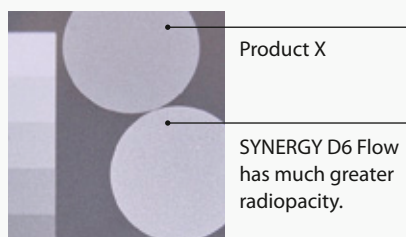
ANTERIOR TOOTH | The excellent self-blend properties of the SYNERGY D6 material enables quick shade selection. SYNERGY D6 is ideal for producing a good, highly aesthetic and cost-effective filling. The DIATECH range of polishers is recommended for optimal preparation and a durable, high lustre.



SYNERGY[®]D6 FLOW

CONTROLLED FLOW

SYNERGY D6 FLOW is a nanofilled flow material based on the proven SYNERGY D6 composite. The focus during development was to improve the radiopacity and minimise shrinkage.

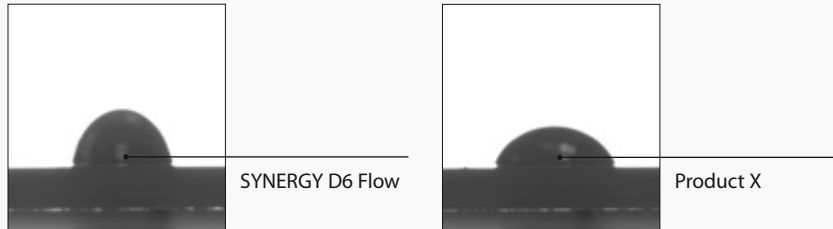


Original image:
Radiopacity was tested
in accordance with
ISO 4049: 2000.

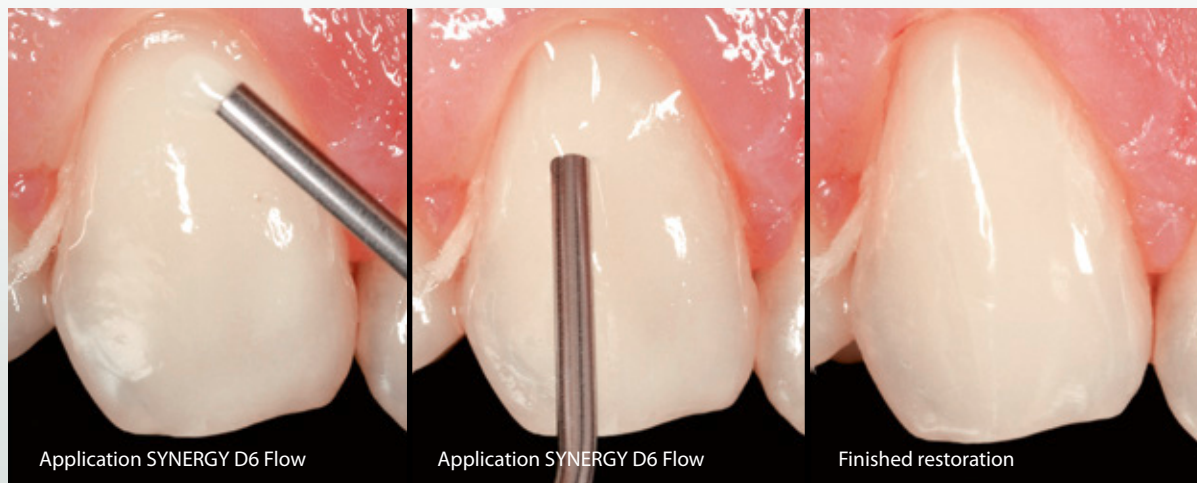
Source: All data is from
internal documentation.

SHADE MATCH | SYNERGY D6 FLOW also incorporates the two-shade concept. The outstanding self-blend properties ensure that Flow matches the shade of the natural tooth. The easy shade selection greatly facilitates the practice routine.

NON-SLUMPING | The flow behaviour of SYNERGY D6 Flow is very easily controlled thanks to its non-slumping consistency and flowability under pressure. Flow can be applied directly and precisely.



5mg of SYNERGY D6 Flow and "Product X" were extruded and photographed after 20 seconds to compare the non-slumping property.



SYNERGY D6 Flow is easily applied and distributed without any problem.

ORDER OVERVIEW

8362 SYNERGY D6 Intro Kit Syringes

Contents: 8 Syringes (4 g/2 ml) + Accessories

SYNERGY D6 Dentin Shades:

White Bleach, A1/B1, A2/B2, A3/D3, A3.5/B3, C2/C3

SYNERGY D6 Enamel Shades: Universal, White Opalescent

SYNERGY D6 Shade Guide



SYNERGY D6 Refills Syringes

Contents: 1 Syringe (4 g/2 ml)

8365 Dentin White Bleach (WB)

6001 3814 Bleach Opaque (BL/O)

8366 Dentin A1/B1

8367 Dentin A2/B2

8368 Dentin A3/D3

8369 Dentin A3.5/B3

8370 Dentin C2/C3

8384 Dentin A4/C4

8371 Enamel Universal

8372 Enamel White Opalescent (WO)

SYNERGY D6 Flow

7650 SYNERGY D6 Flow Intro Kit

Contents: 4 Syringes (2.3 g/1.25 ml)

SYNERGY D6 Flow

A2/B2, A3/D3, WB, Enamel Universal

Application needles, 32 needles



SYNERGY D6 Flow

7660 SYNERGY D6 Flow Kit

Contents: 4 Syringes (2.3 g/1.25 ml)

SYNERGY D6 Flow

A1/B1, A2/B2, A3/D3, A3.5/B3

Application needles, curved, 32 needles



SYNERGY D6 Flow Refills

Contents: 1 Refill (2.3 g/1.25 ml)

7656 Dentin White Bleach (WB)

7651 Dentin A1/B1

7652 Dentin A2/B2

7654 Dentin A3.5/B3

7653 Dentin A3/D3

7655 Dentin A4/C4

7657 Enamel Universal

8454 SYNERGY Flow Super White, 1 x 2.3g

8363 SYNERGY D6 Intro Kit Tips

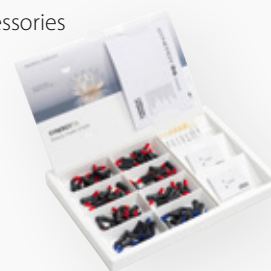
Contents: 80 Tips (0.25g/0.125ml each) + Accessories

SYNERGY D6 Dentin Shades:

White Bleach, A1/B1, A2/B2, A3/D3, A3.5/B3, C2/C3

SYNERGY D6 Enamel Shades: Universal, White Opalescent

SYNERGY D6 Shade Guide



SYNERGY D6 Refills Tips

Contents: 1 Pack (10 tips x 0.25 g/0.125 ml)

8375 Dentin White Bleach (WB)

6001 3813 Bleach Opaque (BL/O)

8376 Dentin A1/B1

8377 Dentin A2/B2

8378 Dentin A3/D3

8379 Dentin A3.5/B3

8380 Dentin C2/C3

8383 Dentin A4/C4

8381 Enamel Universal

8382 Enamel White Opalescent (WO)

SYNERGY D6 Connect

Contents: 1 Pack (10 tips x 0.25 g/0.125 ml)

6001 4029 Connect White Opalescent (WO)

6001 4030 Connect Universal

SYNERGY D6 Accessories

8410 SYNERGY D6 Shade Guide

6671 Composite dispenser

8469 Application needles, curved, 20 needles



One Coat 7.0 is a 7th generation, self-etching, light-curing, one-component adhesive that optimally compliments SYNERGY D6.

7047 One Coat 7.0 Intro Kit

Contents: 1 Bottle (5 ml)

One Coat 7.0

Microbrush, black, 50 brushes

Mixing well, 1 well

Cover for mixing well, 1 cover



7049 One Coat 7.0 Refill

Contents: 1 Bottle (5 ml)

One Coat 7.0

Coltène/Whaledent Ltd.

The President Suite-A
Kendal House, Burgess Hill,
Victoria Way
West Sussex, RH15 9NF / U.K.
Tel +44 1444 235486
Fax +44 1444 870640
info.uk@coltene.com

Coltène/Whaledent AG

Feldwiesenstrasse 20
9450 Altstätten / Switzerland
Tel +41 71 757 5300
Fax +41 71 757 5301
info.ch@coltene.com

Coltène/Whaledent Inc.

235 Ascot Parkway
Cuyahoga Falls, Ohio 44223 / USA
Tel +1 330 916 8800
Fax +1 330 916 7077
info.us@coltene.com