

# Euronda Pro System

## Product, Process, Protection

EN



**Euronda<sup>®</sup>**  
Pro System



# Euronda

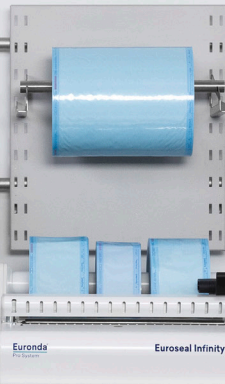
## It's all about protection

Founded in 1975, Euronda is now an Italian company with a global outlook, synonymous with outstanding protection in the medical field. With more than 250 employees, a 70,000 sq.m. headquarters, three subsidiaries abroad and affiliates worldwide, it is present on the market with three product lines dedicated to the safety of the dental environment and the protection of professionals, dentists and patients.

**Monoart**, the range of disposable products that teams maximum quality with vibrant colours. **Pro System**, the comprehensive sterilization system that optimises and tracks the entire process. **Alle**, the disposable line to create a sterile surgical field and prevent infection.

To complete the offering for all-round protection, Euronda has created five complementary lines. **Eurosteril**, rolls and pouches that ensure sterility is maintained over time. **Sanifizer**, products for the cleaning and disinfection of surfaces, accessories and instruments in the dental practice. **Eyewear**, protective glasses and visors for operators and patients, designed and manufactured to guarantee maximum safety. **Studio**, a range of products and accessories to meet all the daily requirements of dentists, assistants and patients. **Stools**, the line of professional stools designed to meet the different requirements of studios.

Driven by a dynamic team, Euronda combines in-depth knowledge of the market with ongoing innovation in materials, processes and technologies to meet the needs of the sector and optimise work phases in full compliance with regulations, with particular attention to the environmental impact of the products and processes.





# Index

## Cleaning

- 8 Eurosafe 170
- 10 Eurosafe 60
- 12 Accessories
- 16 Eurosafe Smart
- 18 Eurosonic 4D
- 20 Eurosonic 3D
- 22 Eurosonic Energy
- 23 Accessories

## Packaging

- 26 Euromatic
- 28 Euroseal Valida
- 30 Euroseal
- 32 Euroseal Infinity

## Sterilization

- 34 Euronda Pro System autoclaves technologies and solutions
- 36 E10
- 38 E9
- 40 EXL
- 42 E8
- 44 E-Memory
- 46 Accessories
- 48 Control test

## Water treatment

- 50 Aquaosmo
- 52 Aquafilter 1 to 1
- 53 Aquadist

## Euronda Eurosteril

- 56 Sterilization rolls
- 57 Sterilization pouches

## Euronda Sanifizer

- 60 Sanifizer Enzymatic
- 61 Sanifizer Neutralizer
- 62 Sanifizer Instruments
- 64 Sanifizer Automatic
- 66 Sanifizer Surfaces
- 67 Sanifizer Wipes

## Euronda Stools

- 71 CDS301 stool
- 72 Coral stool
- 73 Onyx stool

# Euronda Pro System

## Product, Process, Protection



### Cleaning



#### Disinfection

Eurosafe 170  
Eurosafe 60  
Eurosafe Smart



#### Ultrasonic washing

Eurosonic 4D  
Eurosonic 3D  
Eurosonic Energy



#### Thermosealing

Euromatic  
Euroseal Valida  
Euroseal  
Euroseal Infinity

Euronda Pro System is the protection system developed to guarantee a complete and effective instrument reprocessing protocol that protects the safety of operators, patients and the working environment.

Sterilization is a multi-step process and its success depends on the correct execution of each step, from collection to storage. Thanks to the Euronda Pro System line, an advanced and traceable protocol that increases safety and optimises the practice's resources can be applied simply, efficiently and repeatedly over time.



## Sterilization



### Autoclaves

E10  
E9  
EXL  
E8



### Water treatment

Aquaosmo  
Aquafilter 1 to 1  
Aquadist



### Control test



## Powerful

The two rotating arms are arranged in such a way as to ensure that each level of the spacious washing chamber is reached by a powerful double flow of water - from above and below - for a total of four washing points.



## Full optional

Equipped as standard with all the accessories needed to optimise loading: upper and lower loading trolley, instrument insert, 1 DIN basket, two inserts for 8-position trays and bur blocks.



## Spacious

The AISI 316L stainless steel 170-litre washing chamber, it can accommodate up to four full loads of a 24-litre autoclave, equal to more than 140 instruments plus handpieces, turbines, scaler tips, burs.



## Active drying

Drying, through the injection of hot air from several points inside the washing chamber, allows the complete elimination of water deposits on the outside and inside of the hollow-body instrument.



# Eurosafe 170

## Automatic cleaning, extra large



Thermidisinfector ideal for clinics with a high number of patients: it disinfects, rinses and dries instruments in one fast automated process, eliminating the need for manual cleaning. It guarantees excellent results thanks to the injection washing system, with independent arms for each level, and to the forced air drying system, which eliminates water deposits.

Allows the user to choose three from 20 preset cycles by matching them to the buttons under the 3.5" colour display, making them easy to select. It also allows the creation of customised cycles based on the specific needs of the material to be treated, adjusting duration and washing temperature.

Equipped with an integrated softener that allows the use of mains water and monitors the correct regeneration of the resins, giving a warning in the event of salt deficiency. The automatic dosing unit calibrates and injects the two detergent liquids, positioned outside the thermidisinfector, autonomously and without waste.

At the end of each cycle, creates a file that can be transferred to a PC via USB, which reports all process data (time, temperature, cycle number), while also validating the load. In addition, thanks to optional accessories, data can be transferred via Ethernet connection or printed out thanks to the thermal printer.

### Accessories supplied

USB, water conductivity test, regenerating salt (1 Kg), upper and lower loading trolley, two inserts with eight positions, 1 DIN basket, instrument insert, bur blocks.



### Classification

Medical Device Class IIb



### Dimensions

60 x 84 x 63 cm (wxhxd)



### Weight

90 Kg



### Chamber capacity

170 L



### Power supply

Single-phase 220 V / 50 Hz  
Three-phase 380 V / 50 Hz

### Power consumption

2700 W (220 V)  
5600 W (380 V)



### Connectivity

Included: USB and  
E-Memory software  
Optional: Datalogger



## Safe

It increases safety at work, reducing the handling of contaminated instruments and, consequently, the risks for the operator. The automation of the cleaning process also makes this step easily repeatable and traceable.



## Efficient

By processing instruments in just 60 minutes, it saves the clinic considerable time, reducing the time spent manually cleaning instruments and allowing operators to focus on higher value activities.



## Optimised

The 60-litre AISI 316L stainless steel washing chamber, it can accommodate up to two full loads of a 24-litre autoclave. Detergent liquids are stored in the practical space-saving compartment, while the numerous accessories supplied allow for the best possible handling of handpieces, instruments and cassettes.



## Active drying

Drying, through the injection of hot air from several points inside the washing chamber, allows the complete elimination of water deposits on the outside and inside of the hollow-body instrument. The XD version offers superior drying performance thanks to an enhanced system designed for clinics with a high cassette usage.





# Eurosafe 60

## Automatic cleaning, all in one



Ideal thermodisinfectors for small and medium-sized clinics: it cleans, disinfects, rinses and dries instruments in one fast automated process, eliminating the need for manual cleaning. It guarantees excellent results thanks to the injection washing system, which boasts independent spray arms for each level, and to the forced air drying system, which eliminates water deposits. Eurosafe 60 is also available in an XD (Extra Dry) version with an enhanced drying system.

It allows you to choose three preferred cycles from the 20 preset cycles by matching them to the buttons below the 3.5" colour display, which makes them easy to select. It also allows the creation of customised cycles based on the specific needs of the material to be treated, adjusting the duration and washing temperature.

Equipped with an integrated softener that allows the use of mains water and monitors the correct regeneration of the resins, giving a warning in the event of salt deficiency.

At the end of each cycle, creates a file that can be transferred to a PC via USB, which displays all process data (time, temperature, cycle number) and also validates the load. In addition, thanks to optional accessories, data can be transferred via Ethernet connection or printed out thanks to the thermal printer. It connects to the mains with the classic 220 V socket (three-phase not required).

### Accessories supplied

USB, water conductivity test, regenerating salt (1 Kg), standard load basket, insert with eight positions, instrument insert, bur blocks.



### Classification

Medical Device Class IIb



### Dimensions

56 x 82.5 x 58 cm (wxhxd)



### Weight

62 Kg



### Chamber capacity

60 L



### Power supply

230 V / 50 Hz

### Power consumption

2750 W



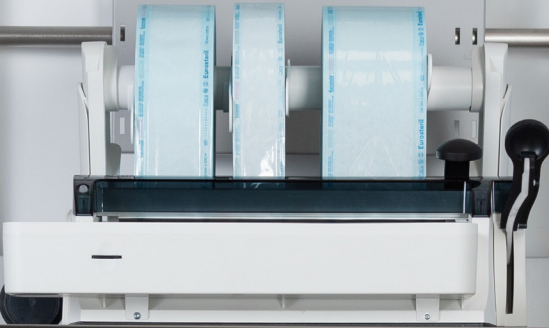
### Connectivity

Included: USB and E-Memory software  
Optional: Datalogger



**E10**

Euronda | Pro System



# Accessories

## Detergents



### Sanifizer Enzymatic

Enzymatic detergent for thermodisinfection. Suitable for removing blood, tissue residues and organic contaminants from Medical Devices.

**Shelf life**

36 months

**Packaging**

5-litre tank



### Sanifizer Neutralizer

Liquid agent with neutralising and cleaning action for automatic washing systems, Medical Devices and laboratory glassware. Facilitates drying, reducing the formation of dulling.

**Shelf life**

36 months

**Packaging**

5-litre tank



### Regenerating salt

Salt for water treatment in thermodisinfectors, prevents limescale deposits and ensures the functionality of the thermodisinfectors.

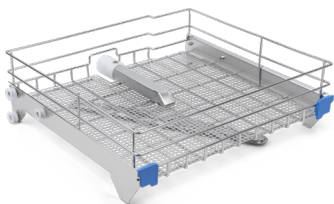
**Packaging**

1 Kg bag

# Accessories

## Loading baskets and trolleys

### Eurosafe 170



#### Upper loading trolley

Upper trolley with rotating stainless steel arms suitable for placing cassette inserts and baskets for instruments and burs.



##### Loading surface dimensions

51 x 9.5 x 48 cm (wxhxd)



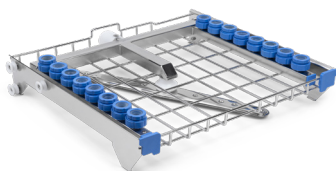
#### Lower loading trolley

Stainless steel lower trolley suitable for cassette inserts and baskets for instruments and burs.



##### Loading surface dimensions

50.5 x 4 x 49.5 cm (wxhxd)



#### Upper loading trolley with sixteen handpiece holders

Trolley equipped with special attachments for thermidisinfection of handpieces.



##### Loading surface dimensions

51 x 4.5 x 48 cm (wxhxd)



## Standard load basket

Stainless steel basket suitable for placing cassette inserts and baskets for instruments and burs.



### Loading surface dimensions

37 x 8 x 39.5 cm (wxhxd)



## Load basket with four handpiece holders, five injectors for hollow instruments, two connections for aspiration tubes



### Loading surface dimensions

32 x 12 x 39.5 cm (wxhxd)



## Load basket with six handpiece holders and six injectors for hollow instruments



### Loading surface dimensions

32 x 12 x 39.5 cm (wxhxd)



## Load basket with eight handpiece holders



### Loading surface dimensions

32 x 8 x 39.5 cm (wxhxd)



## Load basket with eleven injectors for hollow instruments and two connections for aspiration tubes



### Loading surface dimensions

32 x 8 x 39.5 cm (wxhxd)

# Accessories

## Baskets and inserts



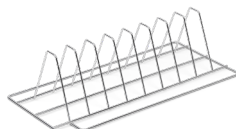
### Instrument insert

Insert for vertically-positioned instruments. 37 x 12 x 12 cm (wxhxd)



### Bur block

Basket suitable for washing burs and small parts. 10 x 4 x 10 cm (wxhxd)



### Insert with eight positions

Insert for eight-slot trays and cassettes (4 cm slots). 18 x 11 x 39 cm (wxhxd)



### Insert with four positions

Insert for four-slot trays and cassettes (3.5 cm slots). 25 x 8 x 38.5 cm (wxhxd)



### Insert with two positions

Insert for two-slot trays and cassettes (5 cm slots). 25 x 18 x 38.5 cm (wxhxd)



### ½ DIN basket

Wire net basket, suitable for scissors, tweezers and mirrors. 25 x 5 x 24 cm (wxhxd)



### 1 DIN basket

Net basket, suitable for large quantities of loose instruments. 48.5 x 50 x 25 cm (wxhxd)

## Adapters



### For handpieces

This allows deep cleaning of the internal channels of the handpiece through water circulation.



### For scaler tips

Consisting of 1 x M3x0.35 and 1 x M3.5x0.6 internal thread, 1 x M3x0.5 external thread, 1 hollow body injector and 1 connector for inserting 3 adapters.



### For aspirator tips and hollow bodies in general

Consisting of 1 stainless steel filter; 1 lid for closure; 1 seal Ø 19-21 and 1 seal Ø 14-17, 1 main body, 1 upper ring.



### For turbines

Made of solid aluminium, they are available for a wide range of turbine models.

# Compatibility of accessories

	Eurosafte 170			Eurosafte 60	
	Upper loading trolley	Lower loading trolley	Upper loading trolley with sixteen handpiece holders	Standard load basket	Loading baskets with handpiece holders, injectors or aspiration tubes*
Instrument insert	✓	✓	✓	✓	✓
Bur block	✓	✓	✓	✓	✓
Insert with eight positions	✓	✓	✓	✓	✓
Insert with four positions	✗	✓	✗	✓	✓
Insert with two positions	✗	✓	✗	✓	✓
½ DIN basket	✓	✓	✓	✓	✓
1 DIN basket	✓	✓	✗	✗	✗
Adapters for handpieces	✗	✗	✓	✗	✓
Adapters for scaler tips	✗	✗	✓	✗	✓
Adapters for aspirator tips and hollow bodies in general	✗	✗	✓	✗	✓
Adapters for turbines	✗	✗	✓	✗	✓

\* Accessories are compatible with all available load basket models with handpiece holders, injectors for hollow bodies and connections for aspiration tubes (see page 15).





## Optimised

Thanks to its 10-litre washing tank, it can accommodate up to one full load of a 24-litre autoclave. The basket and tray, both of which are included, can be placed on top of each other to make the most of the space inside the tank. All this in a bench-top device that maximises operability while minimising the external footprint.



## User-friendly

The 4.3" touch screen display provides a simple and intuitive interface that allows cycles to be started in just a few clicks. It also allows a choice of three pre-set programmes (pre-wash, standard, intensive) and six for ultrasonic cleaning, with the option of customising the duration, temperature and drying of each cycle as required.



## Traceable

The digital traceability system enables easy monitoring of all cycles performed and allows the results to be saved to USB or transferred to a PC via Ethernet connection. It is also possible to enable up to 20 users by entering a password.



## All in one

It performs pre-washing, washing, and drying in a single cycle, eliminating the need for manual cleaning thereby ensuring more effective results in less time and with less risk for the operator. Forced hot air drying also guarantees the complete elimination of water deposits.





# Eurosafe Smart

## Automatic, clinic-friendly cleaning



Multifunctional benchtop tank, ideal for clinics wishing to optimise and automate the process of instrument cleansing and disinfection.

Eurosafe Smart washes, rinses and dries instruments in one fast, automated, repeatable and traceable process. Furthermore, used in synergy with the multi-enzymatic disinfectant and detergent Sanifizer Automatic, it combines the efficiency of ultrasonic washing with the cleansing and disinfection of the load, while saving materials.

It offers a choice of three preset programmes and six ultrasonic washing programmes, as well as the option of customising certain cycle parameters.

Equipped with an interchangeable cartridge system for refilling Sanifizer Automatic, located in the practical space-saving front compartment, which ensures ease of use and safety for the operator. The waste-preventing dispenser automatically withdraws the liquid according to programme and load, while the integrated softener monitors the correct regeneration of the resins, and gives a low salt warning.

At the end of each cycle, the multifunctional tank creates a file that can be transferred to a PC via USB, which contains all the data for the process (outcome, duration, quantity of detergent, operator). In addition, data can be transferred via Ethernet connection and managed using the E-Data and E-Memory software.

### Accessories supplied

USB, regenerating salt (1 Kg), basket, tray.

### Optional accessories

Bur block, silicone brackets for mirrors.



### Classification

Medical Device Class I



### Dimensions

46 x 45.5 x 61 cm (wxhxd)



### Weight

45 Kg



### Chamber capacity

10 L



### Power supply

230 V / 50 Hz

**Power consumption**  
2300 W



### Connectivity

Included: USB and Ethernet



## Accessorized

Equipped with stainless steel perforated basket and anti-deformation cover with non-drip system as standard. Optional beaker and beaker holder to wash small instruments such as burs or prostheses.



## Clear

Intuitive and user-friendly thanks to the LED-backlit controller and light path that provides information on the status of the wash, guiding operators at a glance, even from a distance.



## Ergonomic

Practical side handles and rear tap for easy movement and emptying.



## Versatile

Option to choose from six pre-set cycles, or customise the cycle by setting the temperature up to 60°C and the time from 10 to 40 minutes.



# Eurosonic 4D

## The new dimension of ultrasonic washing



Ultrasonic washing tank equipped with an LED-backlit display controller. Intuitive and user-friendly thanks to the lights indicating the different cycles, times and temperatures.

Durable and reliable thanks to its stainless steel tank AISI 304L, Eurosonic 4D allows a choice of six pre-set cycles and a free cycle that can be customised when it comes to time and temperature. The pre-set cycles work through five phases: heating of the liquid, degassing, removal of coarser particles, cleaning of the material through the combined action of micro-brushing and detergents, and a final phase that evenly distributes the ultrasonic waves for more uniform cleaning.

Equipped with the Sweep Mode technology, which evenly distributes the ultrasonic waves for deep and uniform cleaning.

### Accessories supplied

Anti-deformation non-drip tinted cover and perforated stainless steel basket.



### Dimensions

33.5 x 26 x 20.5 cm  
(wxhxd)



### Weight

5 Kg (with basket and cover)



### Capacity

3.8 L



### Power supply

220-230 V | 50/60 Hz

### Power consumption

300 W



### Pre-set cycles

Instruments: 20 min at 40°C

Burs: 10 min at 40°C

Impression trays: 40 min at 60°C

Cement removal: 10 min at 30°C

Plaster removal: 30 min at 60°C

Prostheses: 40 min at 60°C



## Simple

Allows manual adjustment of the cleaning cycle time from 5 to 30 minutes. Users can also set the working temperature by choosing between 60°C and 35°C or start a cycle without heating.



## Accessorized

The sound-absorbing cover with non-drip system protects operators from possible splashes and aerosols, preventing contamination of the work area and attenuating the noise produced by ultrasonic waves.



## Smart

The central LED provides immediate information on the status of the wash by indicating the progress of the cycle at any time.



## Effective

The Sweep Mode technology increases the mechanical effectiveness of cavitation and ensures a more uniform cleaning due to a homogeneous distribution of ultrasonic waves within the tank.



# Eurosonic 3D

## The most balanced choice for ultrasonic washing

Ultrasonic washing tank with pre-set working temperature of 60°C and adjustable time up to 30 minutes.

Eurosonic 3D offers maximum user-friendliness thanks to practical front buttons and luminous feedback on cycle status and correct operation.

Its sturdy stainless steel tank (AISI 304L) and convenient side handles facilitate emptying, while the Sweep Mode technology ensures an effective and even cleaning.

### Accessories supplied

Anti-deformation non-drip tinted cover and perforated stainless steel basket.



### Dimensions

27 x 24 x 19.5 cm (wxhxd)



### Weight

3.7 Kg (with basket and cover)



### Capacity

2.7 L



### Power supply

220-230 V | 50/60 Hz

### Power consumption

280 W

# Eurosonic Energy

## Safe and accessible ultrasonic washing



Ultrasonic tank with mechanical timer that allows users to set the duration of the cleaning cycle from 5 to 30 minutes.

Sturdy with a stainless steel body AISI 304L and an anti-deformation non-drip cover, it has side handles for easy emptying and an effective and intuitive control panel.

Equipped with the Sweep Mode technology, which evenly distributes the ultrasonic waves for deep and uniform cleaning.

### Accessories supplied

Anti-deformation non-drip tinted cover and perforated stainless steel basket.



### Dimensions

27 x 24 x 22 cm (wxhxd)



### Weight

3.7 Kg (with basket and cover)



### Capacity

2.7 L



### Power supply

230 V | 50/60 Hz

**Power  
consumption**  
80 W



### Fast

Users can start cleaning instruments without the need to preheat the tank.



### Simple to use

The cleaning cycle can be started with a simple gesture, in an intuitive way.

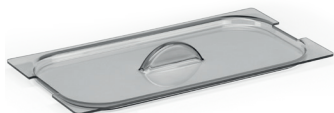


### Intelligent

The indicator lights provide immediate information on the status of the cleaning cycle or on the presence of any errors or anomalies in its use.

# Accessories

## All models



### Cover

Anti-deformation non-drip cover.  
Eurosonic 4D: 31.5 x 16.5 cm (wxd)  
Eurosonic 3D and Energy:  
25 x 15 cm (wxd)



### Basket

Perforated stainless steel basket  
Eurosonic 4D: 28 x 5.5 x 13 cm  
(wxhxd)  
Eurosonic 3D and Energy:  
21.5 x 5.5 x 12.5 cm (wxd)



### Beaker

Graduated glass beaker with 0.6 L  
capacity and rubber  
ring, ideal for washing rotary  
instruments. 10 x 12.5 cm (Øxh)

## Eurosonic 4D



### Single beaker support

Stainless steel basket with space  
for one beaker. It simplifies the  
insertion and removal of beakers.  
10 x 5.5 x 13 cm (wxhxd)



### Triple beaker support

Stainless steel basket with space  
for three beakers. It allows several  
instruments to be cleaned during  
the same wash cycle.  
28 x 2 x 14.5 cm (wxhxd)

## Eurosonic 3D and Eurosonic Energy



### Double beaker support

Stand for two polycarbonate  
beakers. It allows the  
separate cleaning of small objects  
during the same wash cycle.  
25.5 x 2 x 15.5 cm (wxhxd)





## Accessorized

Equipped with a comprehensive range of accessories available to enhance usability, including a front sliding table and a table-top roll holder with cutter.



## Safe

An audible alarm alerts operators to any matters requiring their attention and the stand-by function automatically activates when the machine is not in use.



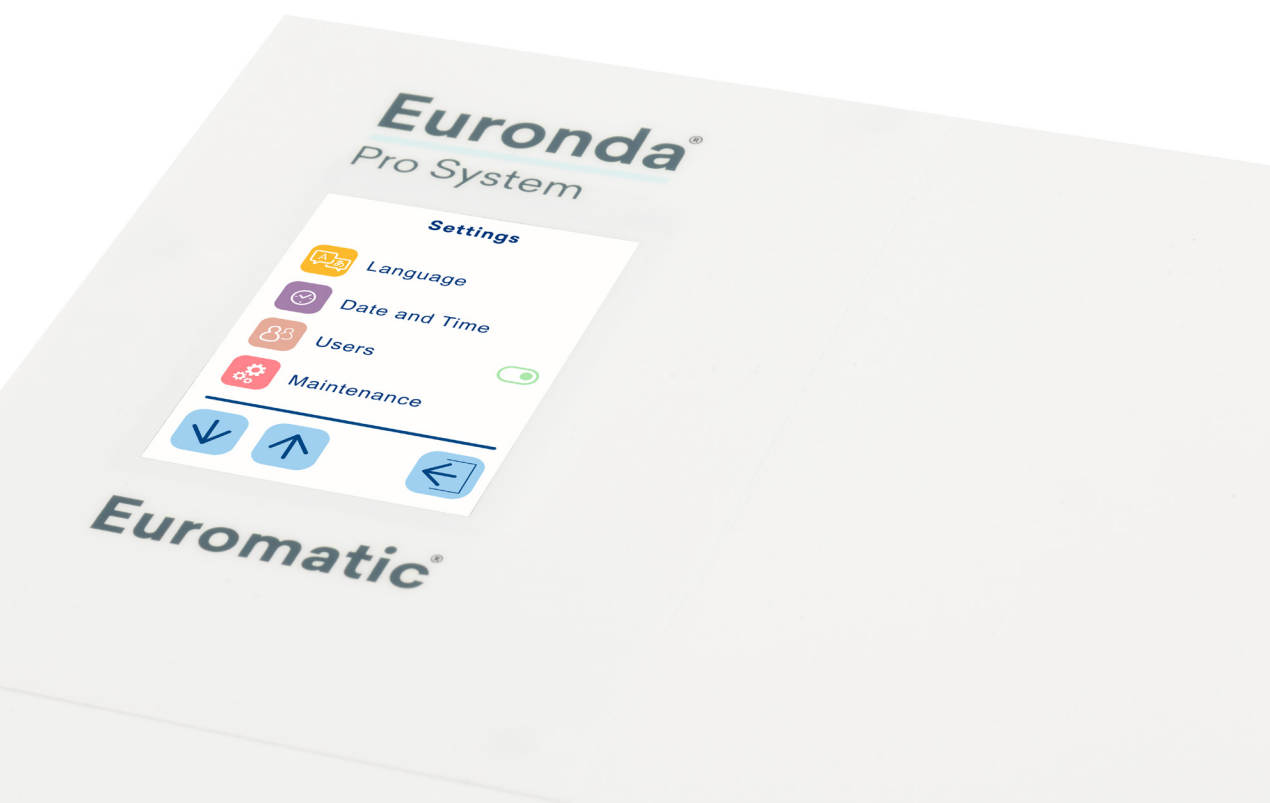
## Adjustable

The temperature can be adjusted from the control panel to ensure the perfect sealing with any type of material.



## Traceable

The built-in printer prints data directly onto the pouches. All information is transferable to a PC via USB, SD card and standard Ethernet connection thanks to the free E-Memory software.



# Euromatic

## Simplifies, speeds up and keeps track of work



Validating rotary thermosealing machine, ideal for practices with large quantities of pouches to seal. It validates every sealed pouch, ensuring maximum time savings due to multi-band sealing at a speed of 8 metres per minute.

The large 2.8" touch-screen display features a user-friendly interface that guides users through the menu options quickly and clearly. In addition, the screen undergoes a special treatment that repels and inhibits the proliferation of bacteria.

The built-in printer prints useful parameters for traceability directly on the pouch. (production data, batch, operator, expiry date). All the sealing information can be transferred to a PC via a USB key, SD card and Ethernet connection as standard.



### Dimensions

51 x 21.5 x 24 cm (wxhxd)



### Weight

14 Kg



### Sealing width

1.25 cm (double band)



### Power supply

200-240 V | 50/60 Hz

### Power consumption

500 W



### Sealing temperature

30-200°C



### Connectivity

Included: Ethernet, SD card, USB, E-Memory and E-Data software



## User-friendly

The display makes it easy to choose the sealing temperature and provides real-time information on the effectiveness of operations. Thanks to sound signals, it minimises the risk of errors.



## Validating

It validates the sealing, confirming its success and storing the relevant data (time, temperature, pressure) on an SD card. The data can then be transferred to a PC via Ethernet or WiFi (optional).



## Practical

Ergonomic support surface and polycarbonate cover for constant visual inspection of the sealing area.



## Versatile

The patented double-level, height-adjustable roll holder can be fixed to a wall, minimising the space required for its use.



# Euroseal Valida

## Digital traceability at every sealing



Validating thermosealing machine with ergonomic design, it guarantees sturdiness and versatility, but also safety and ease of use. The built-in cutter and sealing lever located on the front optimize ergonomics and safety and make packing and sealing operations easier.

The 4" colour touch screen display with user-friendly interface that allows users to quickly and intuitively set the language, date, time, operators, as well as the sealing temperature.

It allows each individual envelope to be validated, saving the data concerning the cycle and the results on an SD card. It can be connected directly to a PC using Ethernet or WiFi (optional) connections for an immediate transfer of data.



### Dimensions (wxhxd)

Standard: 50 x 31.5 x 49 cm  
With wall-mounted roll holder: 50 x 20 x 49 cm  
With double roll holder: 50 x 42 x 49 cm



### Weight

8.5 Kg



### Sealing width

1.2 cm



### Power supply

200-240 V | 50/60 Hz

### Power consumption

180 W



### Sealing temperature

170-200°C



### Connectivity

Included: Ethernet, SD card, E-Memory and E-Data software  
Optional: WiFi



## Ergonomic

The front cutter and sealing lever optimize ergonomics and safety, making packing and sealing operations easier.



## Sturdy

It guarantees long-lasting efficiency and reliability, thanks to the quality of the construction materials and the well-thought-out design.



## Versatile

The roll holder is adjustable in two positions: low, to speed up and change roll selection, and high, in case you want to mount the machine to the wall.



## Compact

The machine is compact so it can be comfortably placed on a table top or vertically thanks to a kit.



# Euroseal Infinity

## A sealing machine is forever



Benchtop thermosealing machine that is practical, sturdy, reliable and easy to use. Its compact and functional design has been studied in detail to minimise the space required for its use; a feature implemented by the possibility of mounting the sealer to the wall for vertical use.

Equipped with a system that keeps the roll within the welding field. The smooth surface facilitates and improves cleaning.



### Dimensions

43 x 21.5 x 43 cm (wxhxd)



### Weight

7 Kg



### Sealing width

1.2 cm



### Power supply

200-240 V | 50/60 Hz

### Power consumption

180 W



### Sealing temperature

170-200°C

# Euroseal

## The user-friendly sealer

Ergonomic, durable and easy-to-use benchtop thermosealing machine. Equipped with a transparent polycarbonate cover to perform welding operations with greater precision and a special patented roll holder that is adjustable in height and depth and can be hung on the wall to suit all work spaces.

The integrated support surface aids the sealing process and provides more practical working conditions. Provided with anti roll-back blocking system.



### Dimensions (wxhxd)

46 x 31.5 x 39 cm  
With wall-mounted roll holder: 46 x 20 x 30 cm  
With double roll holder: 46 x 42 x 39 cm



### Weight

7 Kg



### Sealing width

1.2 cm



### Power supply

200-240 V | 50/60 Hz

### Power consumption

100 W



### Sealing temperature

170-200°C



### Polyvalent

Patented height-adjustable roll holder that can be wall-mounted.



### Practical

Spacious support surface that makes work practical, comfortable and easy.



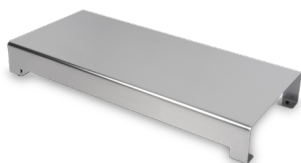
### Safe

Anti roll-back blocking and scald prevention system, combined with sound and light signals.



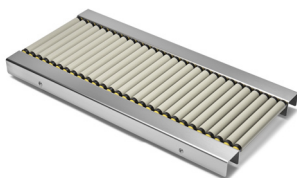
# Accessories

## Euromatic



### Support surface

The height-adjustable stainless steel front surface makes bag sealing operations easier. 52 x 7.5 x 24 cm (wxhxd)



### Sliding table with rollers

Aluminium roller conveyor, adjustable in height. It facilitates the support and sliding of the pouches during packaging. 61.5 x 5.5 x 30 cm (wxhxd)



### Bench-top roll holder

The stainless steel benchtop roll holder with integrated cutter and bidirectional slider allows sterilization rolls to be cut to the desired length. 50.5 x 18 x 31.5 mm (wxhxd)

## Euroseal Valida



### WiFi

SD card for wireless sharing of data captured by the device to any PC, tablet or smartphone.

## Euroseal Infinity



### Vertical fixing kit

Wall mounting kit for Euroseal Infinity consisting of two brackets and suitable hardware.

## All devices



### Euroseal Check

Control test for thermosealing machines that allows the correct sealing of rolls to be checked. Single pack of 100 tests.

## Packaging

# Euronda Pro System technologies and solutions

## Efficiency and reliability in a single platform

Euronda Pro System autoclaves are developed on a common platform that guarantees efficiency, reliability, safety and usability on every model in the range.

All autoclaves share the same modular structure, optimised control and management systems, accessories and spare parts.





## Modular system

The modular design of the Euronda Pro System autoclaves allows the side panels to be easily removed for ease of maintenance.



## Steam generator

Guarantees excellent performance in terms of speed, safety and sterilization. It improves water consumption by calibrating it according to the load and, in synergy with the heating elements, offers perfect drying.



## Inspection System

The inspection system for autoclaves is in full compliance with EN 13060. Inspection System makes tank cleaning quick and easy.



## Air-water separator

It acts as a protection for the vacuum pump, preventing dirt residues, lubricating oil residues, and steam from damaging the internal components, thus preserving the efficiency and reliability over time.



## Conductivity meter

The integrated conductivity sensor constantly monitors the water quality, preventing possible malfunctions due to the use of unsuitable water.



## Dirt Control System

The dirt management system in the hydraulic circuit allows precise separation of clean and dirty water flows so that the autoclave can continue to work at maximum efficiency.



## Smart cooling system

The cooling system is equipped with a probe that allows the most efficient management of the vacuum pump, ensuring longer life and effectiveness.





## Intuitive interface

The interface has been designed with a simple and intuitive logic. Quickly starting cycles by swiping, the possibility to customise them in a few clicks, and video tutorials guiding the user through small routine maintenance procedures simplify the daily use of the device.



## Traceable

Sterilization data can be saved on USB and transferred to a PC via Ethernet connection or WiFi. The cycle archive is easily accessible and searchable from the menu, with the possibility of generating a convenient summary on PDF with all the information on the cycles performed.



## Premium design

E10 is a gem when it comes to design. The compact shape and white of the body bring out the colours of the 7" display. The coloured LED next to the handle acts as a light guide, informing the user immediately about the status of the device or the stage of the sterilization cycle, and also ensuring better visibility of the trays when loading and unloading.



## High-performance

The state-of-the-art vacuum pump and drying system guarantee high-performance and silent sterilization. Air filters prevent dirt from entering the autoclave, preserving the internal components and their efficiency over time.



# E10

## Powerful and connected, for first-class sterilization

Class B autoclave intuitive, traceable and high-performance: enables you to manage your sterilization data in a comprehensive way, thanks to the exceptional digital and paper-based traceability systems. The intuitive interface with 7" colour display and coloured LED next to the handle simplify and speed up day-to-day operations.

E10 enables you to select five different B cycles and, after entering a password, an S and N cycle. In addition to cycles, tests can also be scheduled to optimise uptime.

With standard traceability, all cycle data can be transferred and conveniently managed on a PC via the free E-Data software. You can also install three different optional print set—at any time—to print receipts or thermal labels with data or barcodes.

With E10, everything is designed to be within reach: the printer compartment is easily accessible, the air filters can be removed with a simple click for cleaning or replacing, the front porthole adjustment and door release operations are simple and immediate.

The control systems and advanced features common to all Euronda Pro System autoclaves guarantee safe processes and results over time.

### Accessories supplied

Standard tray holder and five trays, drainage pipes, sponge, tray extraction handle, door adjustment handle, funnel.



### Classification

Medical Device Class IIb, CE0051



### Dimensions

46 x 45.5 x 61 cm (wxhxd)



### Weight

47.5 Kg (18 L) - 50.5 Kg (24 L) (empty machine with tray holders and trays)



### Chamber capacity

18 or 24 L



### Power supply

230 V | 50/60 Hz

### Power consumption

2300 W



### Water consumption

0.3 L



### Connectivity

Included: Ethernet, USB, WiFi, E-Memory and E-Data software





## Intuitive

E9 is developed to make everyday tasks easier and faster. Its 4.3" touch screen display, with clear and essential icons, simplifies navigation for immediate and complete control.



## Functional

Designed down to the last detail for optimal and long-lasting operation, E9 utilises optimised procedures and consumption with a focus on making maintenance tasks easier and faster.



## Connected

Sterilization data can be saved on an SD card and transferred to a PC via a standard Ethernet connection or optional WiFi. The E-Memory software allows simple and immediate data storage and management.



## Complete

E9 offers everything a clinic needs: a user-friendly interface, an expandable traceability system, uncompromising performance and guaranteed reliability over time.



# E9

## Connected and intuitive, tailor-made sterilization

Class B autoclave immediate, efficient and reliable: it enables the complete and connected management of sterilization data with the best digital and paper-based traceability systems. Its intuitive interface, with a 4.3" colour display, simplifies and speeds up daily operations.

E9 offers the option of selecting five different B cycles and, after entering a password, two S and N cycles. In addition to cycles, tests can also be programmed to optimise the use of time.

Thanks to the SD card and Ethernet connection, both standard, all cycle data can be transferred and conveniently managed on a PC via the free E-Data software, while the optional WiFi enables full digital traceability. It is also possible to install three different types of optional printers, at any time, for printing receipts or thermal labels containing data or barcodes.

The control systems and advanced features common to all Euronda Pro System autoclaves guarantee safe processes and results over time.

### Accessories supplied

Standard tray holder and five trays, drainage pipes, sponge, tray extraction handle, door adjustment handle, funnel.



### Classification

Medical Device Class IIb, CE0051



### Dimensions

46 x 43.5 x 61 cm (wxhxd)



### Weight

47.5 Kg (empty machine with tray holders and trays)



### Chamber capacity

24 L



### Power supply

230 V | 50/60 Hz

### Power consumption

2300 W



### Water consumption

0.3 L



### Connectivity

Included: Ethernet, SD card, E-Memory and E-Data software  
Optional: WiFi





## Spacious

The 29-litre stainless steel chamber allows an increased loading capacity with 30% more usable space than a 24-litre autoclave. A total of 275 cm of linear space is available to optimise cycles and reduce consumption.



## Traceable

Allows you to choose between two different printers, both for adhesive labels: one internal and one external for large quantities. Both are easily installed at any time in a few simple steps.



## Connected

The SD Card and Ethernet connection that come as standard make it easy to file, manage and view the sterilization process results on a PC thanks to the E-Data and E-Memory software.



## Eco-friendly

It optimises the consumption of water (0.9 L per cycle) and electricity (3200 W), thanks to the instant steam generator.



# EXL

## Extra Large Autoclave



Class B autoclave to meet the needs of practices with a high patient turnover thanks to its increased load capacity. The large 29-litre chamber can hold up to 5 x 55 cm trays (+17 cm compared to a 24-litre autoclave) with 85 cm more total load capacity than standard.

It enables selecting five different B cycles and, after entering a password, one S type cycle. In addition to cycles, tests can also be programmed to optimise the use of time.

Traceability is ensured by the standard SD card and Ethernet connection and the possibility of installing two different optional printers at any time.

The control systems and functionalities of Euronda Pro System autoclaves guarantee safe processes and results over time.

### Accessories supplied

Standard tray holder and five trays, drainage pipes, sponge, tray extraction handle, door adjustment handle, funnel.



### Classification

Medical Device Class IIb, CE0051



### Dimensions

46 x 45.5 x 85.5 cm (wxhxd)



### Weight

62 Kg (empty machine with tray holders and trays)



### Chamber capacity

29 L



### Power supply

230 V | 50/60 Hz

### Power consumption

3200 W



### Water consumption

0.9 L



### Connectivity

Included: Ethernet, SD card, E-Memory software and E-Data



## Optimized

The 24-litre chamber and the tray holder with five trays included guarantee optimal loading capacity with minimum space requirements. The tray holder also allows the insertion of up to three 1 DIN and three ¼ DIN cassettes per load.



## Traceable

In addition to the SD card, available as standard on E8, there is a choice of two different internal printers: one for thermal paper and one for adhesive labels. Both can be installed in the front of the autoclave in a few simple steps.



## Complete

It offers the perfect balance between ease of use and performance, thanks to the accessories included as standard, such as the tray holder including five trays and state-of-the-art control systems, such as the integrated conductivity meter.



## Resilient

All materials, components and finishes are designed to last. Every detail is designed to provide a robust autoclave that is able to cope with the workload of any clinic.



# E8

## Efficient and reliable: sterilization for everyone

Class B autoclave reliable, affordable and easy to use: the perfect balance between performance and robustness, power and consumption, simplicity and flexibility.

Equipped with a 2.4" colour display, it allows you to select five different cycles of type B and, upon entering a password, two cycles of types S and N. In addition to cycles, tests can also be programmed, in order to make the best possible use of time.

Data from sterilization cycles are easily transferred to a PC, thanks to the SD card and E-Data software, both of which come as standard. It is also possible to install two different types of optional printers at any time.

The control systems and functionalities of the Euronda Pro System autoclaves guarantee safe processes and results over time.

### Accessories supplied

Standard tray holder and five trays, drainage pipes, sponge, tray extraction handle, door adjustment handle, funnel.



### Classification

Medical Device Class IIb,  
CE0051



### Dimensions

46 x 45.5 x 61 cm (wxhxd)



### Weight

48 Kg (empty machine with  
tray holder and tray)



### Chamber capacity

24 L



### Power supply

230 V | 50/60 Hz

### Power consumption

2300 W



### Water consumption

0.3 L



### Connectivity

Included: SD card and  
E-Memory software



## Simple

E-Memory is user-friendly thanks to its intuitive interface, essential controls and simple and immediate search filters.



## Efficient

Automatic data capture for Ethernet and wireless devices and automatic equipment backup.



## Complete

Ideal for a complete management of all equipment involved in the sterilization process. It processes an ordered list of cycles and filters them by machine, model, serial number, operator, date and outcome.



## Innovative

With the Watch Folder and Technical Support functions, reporting, certification and alerts are available in one simple click.



# E-Memory

## For total traceability in your practice



Software for the complete archiving, management and traceability of all sterilization cycles and data directly on a PC. E-Memory acquires the sterilization process data automatically, semi-automatically or manually, storing it on the PC where it can be easily organised, searched, printed or sent by email.

It also makes it possible to trace and select all information related to the cycles performed by the different devices (thermodisinfectors, sealer and autoclave) involved in the sterilization process.

It is easy to consult and manage, and allows you to send selected cycles and data directly to technical support in just a few clicks, and to automatically produce reports and PDF certificates with header, graphic logo and personal data.



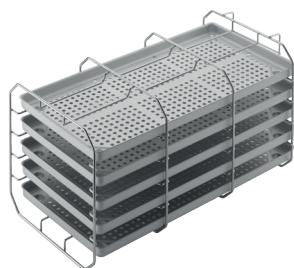
**Download**



# Accessories

## Tray holder

E10, E9 and E8



### Standard tray holder

The square panelled stainless steel tray holders are designed for loading five standard aluminium trays (included). When rotated by 90°, it allows three rows of bagged cassettes to be inserted. Available in 18 and 24 litre versions.



#### Dimensions

18 L tray holder: 19.5 x 19.5 x 30 cm (wxhxd)

18 L tray: 18.5 x 2 x 28 cm (wxhxd)

24 L tray holder: 19.5 x 19.5 x 40 cm (wxhxd)

24 L tray: 18.5 x 2 x 38 cm (wxhxd)



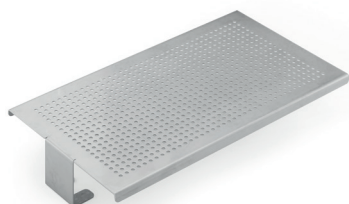
### Tray holder for cassettes

The curved steel tray holder allows the insertion of five standard aluminium trays or, when rotated 90°, four x 1 DIN and four x ¼ DIN bagged cassettes. Available in 24 litre version only.



#### Dimensions

19.5 x 22.5 x 40 cm (wxhxd)



### Universal support surface

Steel support surface suitable for larger loads. To be installed directly in the boiler, after removal of the supplied tray holder. Available in 18 and 24 litre versions.



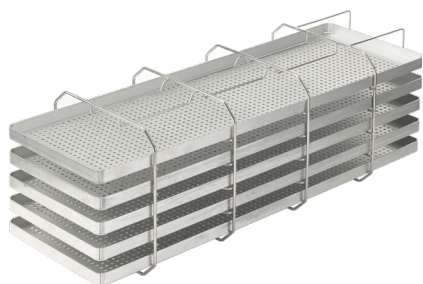
#### Dimensions

18 L version: 19.5 x 5.5 x 25 cm (wxhxd)

24 L versions: 19.5 x 5.5 x 35 cm (wxhxd)



EXL



## Standard tray holder XL

The square panelled stainless steel tray holders are designed for the loading of five aluminium trays XL. Each tray offers 17 cm more compared to a 24 L autoclave. As these can be rotated to 90°, three shelves for sealed cassettes can be inserted. five trays included.



### Dimensions

Tray holder: 19.5 x 19.5 x 57 cm (wxhxd)  
Tray: 18.5 x 2 x 55 cm (wxhxd)

---

# Trolley



## E-Cart

Multifunctional trolley, compatible with EXL, with large adjustable shelves accessible from the front, rear compartment suitable for holding Aquafilter 1 to 1 or an Aquaosmo, and removable front shelf.



### Dimensions

51 x 81 x 87 cm (wxhxd)

# Accessories

## Print set



### Print Set 1

Internal printer with thermal paper. Compatible with E10, E9 and E8.



### Print Set 2

Internal printer for adhesive labels, also allows barcodes to be printed. Compatible with all Euronda Pro System autoclaves.



### Print Set 3

External printer for adhesive labels, ideal for studios needing large quantities of labels. Barcodes can also be printed. Compatible with E10, E9 and EXL.

---

## Connectivity systems



### E-Data

Software for connecting all Euronda Pro System devices to the management system, so that all data can be recorded and tracked. Available for Windows and iOS operating systems and compatible with most management programmes on the market.

# Control test



## Helix test

Control test for Class B autoclaves to assess the steam penetration capacity in hollow loads.



### Classification

Medical Device Class I



### Packaging

Pack with 1 cannula and 250 control indicators

## Bowie & Dick test

Control test for autoclaves to check steam penetration capacity in porous loads.



### Classification

Medical Device Class I



### Packaging

Pack of 10 tests

## Prion test

Test for class B autoclaves. Calibrated to temperature, time and pressure parameters considered effective in 134° Prion cycle sterilization.



### Classification

Medical Device Class I



### Packaging

Pack of 200 control indicators



## Practical

It does not require a power supply and can be installed on a worktop or inside a cabinet.



## Compatible

Aquaosmo connects directly to all class B autoclaves thanks to the Aquabox device.



## Multiple autoclaves

It can supply two to four autoclaves at the same time, thanks to the 12-litre storage tank, and after installation of the Aquabox device.



## Fast

Thanks to the filter system, it can deionise 1 litre of water in 20 minutes.



# Aquaosmo

## The advanced osmosis system for multiple autoclaves



Device for the production of osmosis water through a reverse osmosis process, suitable for clinics with high water hardness. The filtering system consisting of a sediment filter and carbon filter, resin and osmotic membrane, guarantees high quality water production, suitable for supplying the autoclaves and all the practice's equipment in compliance with standard EN 13060 (<15 µs/cm).

Does not require a power supply and can be installed on a worktop or inside a cabinet. Aquaosmo offers excellent filtration performance and reliability with reduced environmental impact, thanks to the use of a single resin with a guaranteed life of 12 months.

### Accessories supplied

Aquabox and external storage tank.



### Dimensions

30 x 35 x 16 cm (wxhxd)



### Weight

5.5 Kg (empty)



### It can supply

Up to 4 autoclaves



### Water production

1 L of water every 20 minutes



### Supply pressure

Min 2 / max 8 bar



### Inlet water conductivity

Max. 800 µs

### Accessories



### Aquabox

It allows the connection of Euronda Pro System autoclaves to an external treated water source.



### External storage tank

Two to four autoclaves can be fed. Capacity: 12 L.



### Water nozzle

Gun with hose extendable up to 80 cm. It connects to the Aquaosmo outlet and enables osmosis water to be delivered manually.

# Aquafilter 1 to 1

## The ideal deionisation system for a single autoclave



Device for the production of deionised water for autoclaves, in accordance with EN 13060 ( $< 15 \mu\text{S}/\text{cm}$ ). Only one Euronda Pro System autoclave can be supplied.

It deionises on average 1 litre of water per minute. It can be equipped with automatic shut-off device. It can be placed directly on the worktop or inside a cabinet, as well as mounted to a wall.

### Accessories supplied

Two ion exchange resins.



### Dimensions

39 x 45.5 x 14.5 cm (wxhxd)



### Weight

8.5 Kg (empty)



### It can supply

1 autoclave



### Water production

1 L of water every minute



### Supply pressure

Max 8 bar



### User-friendly

An indicator light shows the conductivity level of the water, indicating when the resins need to be replaced.



### Easy to install

The quick couplings allow direct connection to the autoclave and water supply.

# Aquadist

## Distilled water ready for every need

Water distiller for obtaining distilled water by boiling and subsequent steam condensation. It distils 0.7 L of water per hour. 4-litre capacity.



### Practical

Easy to use, it produces ready-to-use distilled water in no time.



### Effective

Its 4-litre capacity makes it useful for covering several sterilization cycles.



#### Dimensions

23 x 36 cm (Øxh)



#### Weight

3.5 Kg



#### Water production

0.7 L of water every hour



#### Power consumption

580 W





**Euronda<sup>®</sup>**  
Eurosteril

# Euronda Eurosteril

## Pro packaging solutions

Safe, efficient and easy to use, Euronda Eurosteril rolls and pouches are the perfect accompaniment for the sterilization process.

Made in Italy using the best materials and state-of-the-art processes, these ensure: a constant seal during sterilization; very easy opening without fibre release or tearing; maintained sterility. Chemical indicators signal at a glance that sterilization has taken place.

Sterile up to six months in ideal storage conditions and subject to validation of the sterilization and sealing process.



### **Classification**

Medical Devices Class I



### **Variants**

Flat and gusseted sterilization rolls  
Heat-sealable and self-sealing sterilization pouches

# Sterilization rolls



Produced with the best certified materials: high grammage medical paper (60 g/m<sup>2</sup>) and a double layer of polyethylene/polypropylene film, in compliance with MDR (EU) 2017/745 and EN 868-5.

Coloured chemical indicators signal at a glance that sterilization has taken place. Cutting and sealing operations are standardised and simplified thanks to the centimetre mark on the roll, ensuring the correct length of the pouch and its effectiveness in maintaining sterility.

Available in two versions:

- flat, available in different sizes;
- gusseted, ideal for packing large objects and instruments. Available in three different formats.

## Product mix available

- Mix Eurosteril: two rolls of 5 cm, two rolls of 7.5 cm, 1 roll of 10 cm.



## Classification

Medical Device Class I



## Packaging

Flat rolls:

5 cm x 200 m (8 pcs)  
7.5 cm x 200 m (5 pcs)  
10 cm x 200 m (4 pcs)  
15 cm x 200 m (2 pcs)  
20 cm x 200 m (2 pcs)  
25 cm x 200 m (1 pc)  
30 cm x 200 m (1 pc)  
40 cm x 200 m (1 pc)

Gusseted rolls:

20 cm x 5 x 100 m (2 pcs)  
25 cm x 5 x 100 m (1 pc)  
25 cm x 6.5 x 100 m (1 pc)



## Durable

Six months sterility in ideal storage conditions and subject to validation of the sterilization and sealing process.



## Safe

Excellent peelability during opening, with no release of paper fibres or tearing of the plastic material.



## Efficient

The useful guides with centimetre markings on the sides of the rolls, simplify and standardise the operator's daily work, avoiding errors, wasted material and time.

# Sterilization pouches



Heat-sealable pouches made of white medical paper with high grammage (60g/m<sup>2</sup>) and double layer of blue polyethylene/polypropylene film, in compliance with MDR (EU) 2017/745 and EN 868-5.

Three uniform, waterproof side channel seals for maximum microbial protection. Equipped with chemical indicators for steam or EO gas (ethylene oxide) sterilization. Optimum peelability without the release of paper fibres or tears to the film when opening the packaging.

They are available in two versions:

- classic heat-sealable;
- self-adhesive, equipped with a synthetic rubber adhesive band and closing fold. Practical and easy to use, they provide immediate protection without the use of heat sealers.



## Classification

Medical Device Class I



## Packaging

Heat-sealable pouches:  
5 x 25 cm (500 pcs)  
7.5 x 25 cm (500 pcs)  
10 x 25 cm (500 pcs)  
Self-adhesive pouches:  
9 x 25 cm (9 packs of 200 pcs)  
14 x 26 cm (6 packs of 200 pcs)  
19 x 33 cm (5 packs of 200 pcs)



## Durable

Six months sterility in ideal storage conditions and subject to validation of the sterilization and sealing process.



## Safe

Excellent peelability during opening, with no release of paper fibres or tearing of the plastic material.



## Functional

They provide an excellent antimicrobial barrier and, thanks to chemical colour indicators, they change colour, signalling at a glance that sterilization has taken place.



**Euronda<sup>®</sup>**  
**Sanifizer**

# Euronda Sanifizer

## The safer & greener choice

Euronda Sanifizer is the environmentally friendly range of products for cleaning and disinfecting Medical Devices such as surfaces, accessories and instruments in the dental surgery.

Thanks to the innovative formulations, all Sanifizer products ensure maximum efficacy and safety, and are broadly compatible with the different materials they treat.

Non-toxic, free of fragrances, sensitisers and allergy-inducing substances, they are produced without chlorine, phenols, CMR, aldehyde derivatives or nano particles. Their state-of-the-art formulations and low dosages protect the health of those who use them daily.

They simplify and speed up procedures, guaranteeing the safety of the operators who use them on a daily basis and bringing dental clinics the same quality and safety standards as hospitals.



### **Classification**

Medical Devices Class I, IIa and IIb



### **Shelf life**

3 years



### **Action spectrum**

Bactericidal, levuricidal, mycobactericidal, virucidal, fungicide (only Sanifizer Instruments and Sanifizer Automatic)

# Sanifizer Enzymatic



Sanifizer Enzymatic is the first product on the market to utilise lysozyme, a natural enzyme that, in combination with protease, ensures a deep and safe cleaning action. Its medium alkalinity bio-multi-enzymatic formulation is ideal for automatic washing of Medical Devices.

Especially suitable for removing blood, tissue residues and organic contaminants from reusable Medical Devices. Free of harmful substances, it guarantees safe use and deep action, preserving the materials treated.

When combined with Sanifizer Neutralizer, it ensures the careful, environmentally friendly and delicate washing of all instruments, guaranteeing correct functioning and extending the useful life of the instruments themselves and of thermosensitizers such as Eurosafe 60 or Eurosafe 170.



## Classification

Medical Device Class I



## Format

5-litre tank



## Shelf life

3 years



## Active ingredients

Alkaline compound, enzyme complex (lysozyme and protease)



## Compatibility

Stainless steel, anodised aluminium, rubbers and plastics in general, ceramic materials, silicone, Teflon (PTFE), titanium and glass



## Packaging

Box of 2 tanks



## Safe

Free of sodium hydroxide, potassium hydroxide, metasilicates, dyes and fragrances, it is suitable for everyday use in full compliance with occupational safety regulations.



## Gentle

Its formulation ensures optimal cleansing of all organic residues, fully respectful of the different materials treated.



## Cleaning

Excellent cleansing results due to the synergetic action of the medium alkalinity, surfactants and the cleaning bio-enzyme complex with hydrolytic, preservative, fungistatic and bacteriostatic properties.



# Sanifizer Neutralizer



Liquid agent with neutralising and cleaning action for automatic washing systems. It eliminates residual alkalinity and facilitates drying, reducing dulling and streaking in surgical instruments and Medical Devices.

When combined with Sanifizer Enzymatic, it ensures the careful, environmentally friendly and delicate washing of all instruments, guaranteeing correct functioning and extending the useful life of the instruments themselves and of thermosinfectors such as Eurosafe 60 or Eurosafe 170.



## Classification

Medical Device Class I



## Format

5-litre tank



## Shelf life

3 years



## Active ingredients

Citric acid, alpha Hydroxy Acid (AHA)



## Compatibility

Stainless steel, anodised aluminium, rubbers and plastics in general, ceramic materials, silicone, Teflon (PTFE), titanium and glass



## Packaging

Box of 2 tanks



## Respectful

Thanks to the use of organic acids, Sanifizer Neutralizer acts as a natural anti-limescale agent and softener, preserving the functionality and service life of surgical instruments and Medical Devices.



## Protective

Supports and enhances the cleaning action of Sanifizer Enzymatic, safeguarding the functionality of the thermosinfector through its ability to eliminate heavy ions in the water.



## Eco-friendly

Free from phosphorus and surfactants, Sanifizer Neutralizer ensures maximum respect for the environment, thanks to the special formulation based on naturally derived citric acid and alpha hydroxy acid (AHA).



## Concentrate

Developed to be effective in low concentrations (0.5%), it requires a lower dosage, minimising waste and environmental impact. One bottle makes 200 litres of solution.



## Fast

Ideal for manual washing, in decontamination baths and in ultrasonic tanks, it acts in just five minutes, ensuring disinfection and cleansing of surgical instruments, endoscopes and Medical Devices.



## Double action

It has a cleansing action thanks to the multi-enzymatic complex and encapsulated enzymes, and a disinfecting action thanks to the biocidal system that ensures a broad spectrum of action.



# Sanifizer Instruments



Multi-enzymatic disinfectant and detergent suitable for disinfecting and cleansing surgical instruments and Medical Devices in decontamination baths or for manual washing or in ultrasonic tanks.

The biocidal complex and encapsulated enzyme complex work together to deliver all the advantages of a deep-cleaning disinfectant-detergent while protecting the materials being treated. The neutral pH is ideal for treating even the most delicate materials, avoiding oxidative and corrosive effects. It can be used on burrs and root-canal instruments.

The chlorine-, alcohol-, phenol- and aldehyde-free formulation ensures compatibility. Free of hazardous or toxic substances, it produces no fumes during use, ensuring the safety of operators. It is >90% biodegradable resulting in a low environmental impact.



## Classification

Medical Device Class IIb



## Format

1 L right-dose bottle



## Shelf life

3 years



## Active ingredients

4<sup>th</sup> generation quaternary ammonium, diamine, complex of 4 encapsulated enzymes



## Compatibility

Stainless steel, aluminium, polypropylene (PPE), PVC, polystyrene, Teflon (PTFE) and polycarbonates



## Packaging

Box of 12 bottles

Total solution	Concentration*	Disinfectant
1 L	0.5%	5 ml
2 L	0.5%	10 ml
3 L	0.5%	15 ml

*\*The 0.5% concentration is suitable for bactericidal, fungicidal, mildicidal, and virucidal action, with contact times ranging from 5 to 15 minutes depending on the action. The concentration must be increased to 2.5% for mycobactericidal and tuberculocidal action.*



## Double action

It cleanses thanks to the multi-enzymatic complex and encapsulated enzymes, and disinfects thanks to the biocidal system that ensures a broad spectrum of action.



## Concentrate

Developed to be effective in low concentrations (0.5%), it requires a lower dosage, minimising waste and environmental impact. 20 cycles can be performed with just one bottle.



## Delicate

The special formulation ensures optimal cleansing of all organic residues and broad compatibility, while respecting the various materials treated.



# Sanifizer Automatic



Multi-enzymatic disinfectant and detergent for disinfecting and cleansing surgical instruments and Medical Devices.

Used with the multifunctional Eurosafe Smart tank, efficient ultrasonic washing and load cleansing and disinfection are combined in just one cycle. The interchangeable cartridge system allows for easy replacement, ensuring ease of use and safety for the operator.

The biocidal complex and encapsulated enzyme complex work together to deliver all the advantages of a deep-cleaning disinfectant-detergent while respecting the materials treated.

The neutral pH is ideal for treating even the most delicate materials, avoiding oxidative and corrosive effects. The chlorine-, alcohol-, phenol- and aldehyde-free formulation ensures compatibility.

Free from hazardous or toxic substances, it ensures the safety of operators. It is >90% biodegradable resulting in a low environmental impact.



## Classification

Medical Device Class I Ib



## Format

1 L bottle



## Shelf life

3 years



## Active ingredients

4<sup>th</sup> generation quaternary ammonium, diamine, multi-enzyme complex



## Compatibility

Stainless steel, aluminium, polypropylene (PPE), PVC, polystyrene, Teflon (PTFE) and polycarbonates



## Packaging

Box of 12 bottles

# Sanifizer Surfaces



Hydroalcoholic disinfectant and detergent for disinfecting and cleaning all surfaces of non-invasive Medical Devices, furniture and equipment.

The broad spectrum of action, instant efficacy and rapid drying, simplify and speed up protocols, improving repeatability and standardisation. The low alcohol composition (48%) offers the perfect balance between speed of use, compatibility and safety. This is made possible by the co-action of several active ingredients which, by interacting synergistically, ensure high effectiveness at low doses, ensuring user safety and preserving the treated surfaces from dulling, corrosion and ageing. It can be used on dental instruments used during a consultation, including burrs.

The foaming nozzle decreases product volatility, reducing waste; it also allows Sanifizer Surfaces to be used from different angles.



## Classification

Medical Device Class IIa



## Format

0.75 L bottle



## Shelf life

3 years



## Active ingredients

4<sup>th</sup> generation quaternary ammonium, alcohol 48%



## Compatibility

Stainless steel, aluminium, zinc, copper, polypropylene (PPE), PVC, polystyrene, Teflon (PTFE) and polycarbonates



## Packaging

Box of 12 bottles



## Safe

Non-toxic, free of carcinogenic, mutagenic, reprotoxic substances and sensitizers (fragrances, dyes), it is compatible with a wide range of materials ensuring maximum safety.



## Instantaneous

Ready-to-use thanks to the convenient foaming nozzle, it reaches all surfaces, dries quickly and does not require rinsing.



## Respectful

Manufactured with pharmaceutical grade raw materials and innovative formulations, it reduces the required alcohol dosage while maintaining efficacy, for superior performance, compatibility and safety.

# Sanifizer Wipes



Disinfectant wipes ideal for cleaning and disinfecting non-invasive medical devices, furniture and equipment. Pre-soaked with the correct dosage of the substance, they are ready to use, are effective in seconds, and the surfaces do not need to be rinsed.

They simplify and speed up protocols, improving repeatability and standardisation, thanks as well to the practical single-top re-closable cap pack that preserves the product, avoiding waste and spillage.

They guarantee the safety of environments and users, as they are completely free of harmful substances and low in alcohol, thanks to the combination of active ingredients acting synergistically to ensure high efficacy at low dosages. They ensure tear resistance, leaving no residue after use.



## Classification

Medical Device Class IIa



## Dimensions

Towel: 15 x 19 cm



## Shelf life

3 years



## Active ingredients

4<sup>th</sup> generation quaternary ammonium, chlorhexidine, alcohol 16%



## Compatibility

Stainless steel, aluminium, polyethylene, PVC, polystyrene, Teflon (PTFE) and polycarbonates



## Packaging

Flowpack of 100 wipes  
Box of 12 flowpacks  
(total of 1200 wipes)



## Effective

Anti-tear and pre-soaked, they guarantee fast and deep action, without leaving residue.



## Practical

The resealable lid keeps the towels moist and allows you to remove one wipe at a time, reducing the risk of cross-contamination and waste.



## Eco-friendly

Made of high-quality, biodegradable and biocompostable NWF, and soaked in a 90% biodegradable solution. The packaging is made of recyclable PET.





**Euronda<sup>®</sup>**  
Stools

# Euronda Stools

## Comfortable & stylish

Euronda's range of stools includes three models designed to satisfy any needs. Onyx, Coral and CDS301 are perfect for those who have to spend long hours sitting down thanks to the curved anatomically backrest that is adjustable in height, depth and position, the comfortable seat, and the robust design with self-braking castors.

Seat and backrest can be customised in different materials and many colours, thermoformed or stitched.



# Stool CDS 301



Chromed steel frame with five-spoke base, equipped with five self-propelled castors. The convenient mechanism is integrated into the underside of the seat and can be operated 360° using both hands, so that searching for levers and buttons during procedures is no longer necessary. The wraparound, anatomical backrest is adjustable in height, depth and position. It allows you to maintain a relaxed working position, reducing the load on the back, pelvis and legs. Smooth surfaces for maximum hygiene and cleanliness.



## Colours

Numerous colours available



## Models

Thermoformed or sewn



## Dimensions

Round seat: 40 x 10 cm  
(Ø x h)

Adjustable height:  
51 - 69 cm



## Weight

15 Kg

# Stool Coral



Recyclable, fire-retardant, scratch- and impact-resistant extruded polyamide frame, equipped with five self-locking castors. The operating mechanism is covered by a special cap. It is integrated into the underside of the seat and can be operated 360° using both hands, so that searching for levers and buttons during procedures is no longer necessary. The wraparound, anatomical backrest is adjustable to three different positions while the seat is made of non-deformable polyurethane.



## Colours

Numerous colours available



## Models

Thermoformed or sewn



## Dimensions

Round seat: 39 x 9 cm  
(Ø x h)  
Adjustable height:  
52 - 70 cm



## Weight

13 Kg



# Stool Onyx



Aluminium frame with five spokes.  
Adjustable height thanks to the lever located under the seat, which can be operated 360°.  
Round seat and wraparound, anatomical backrest, adjustable to three positions (right, centre and left) and by depth.



## Colours

Numerous colours available



## Models

Thermoformed or sewn



## Dimensions

Round seat: 39 x 9 cm  
(Ø x h)

Base diameter: 58 cm

Adjustable height:  
50 - 65 cm



## Weight

11 Kg



## **Euronda Spa® 2025**

This catalogue may not be copied, reproduced or scanned by any means. All rights reserved.

Images, descriptions, technical specifications and features are purely indicative.

While maintaining the basic features of the product, the manufacturer reserves the right to make changes at any time with the sole aim of improvement.





### **Euronda Spa**

Via Chizzalunga 1

36066 Sandrigo

Vicenza, Italy

**t** +39 0444 656111

**f** +39 0444 656199

**m** info@euronda.com

**www.euronda.it**

### **Deutschland**

Euronda Deutschland

Am Landwehrbach 5

48341 Altenberge, Deutschland

**t** +49 2505 9389 0

**f** +49 2505 9389 29

**m** info@euronda.de

**www.euronda.de**

### **France**

Euronda France Eurl

ZAC les Vallées, Avenue de Bruxelles

60110 Amblainville, France

**t** + 33 (0) 3 44 06 69 70

**m** info@euronda.fr

**www.euronda.fr**

### **España**

Identyd

Calle Músico Antonio Rodríguez

de Hita, 12 Bajo 30007 Murcia

España

**t** 900102034

**m** info@euronda.es

**www.euronda.es**